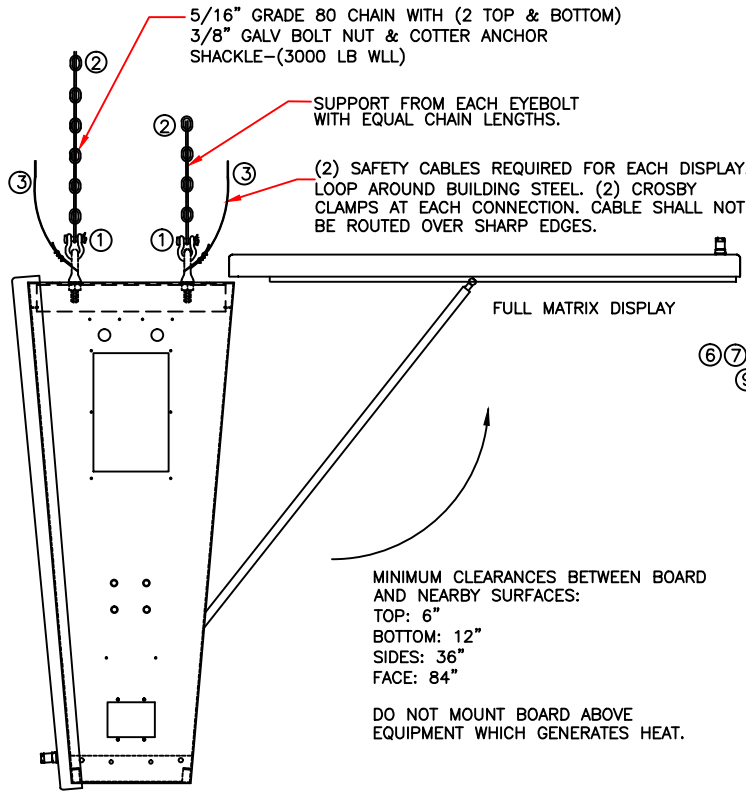


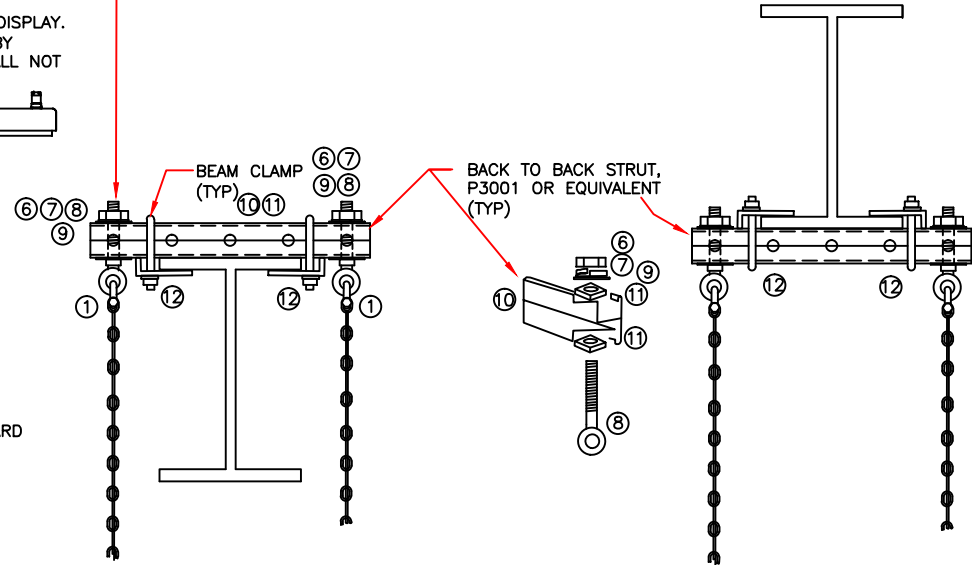
SYM	REVISION	APP	DATE
A			

CHAIN AND UPPER AND LOWER SHACKLES SHALL BE OF CORROSION RESISTANT MATERIAL AND BE RATED FOR OVERHEAD LIFTING WITH A WORKING LOAD LIMIT OF 3000 LBS. VERTICAL CHAIN LOADING ONLY.



ATTACH ONLY APPROVED COMPONENTS TO QAS LIGHT BOARD. OTHER MARQUEES TO BE SUPPORTED SEPARATELY.

1/2" THREAD DIA. SHOULDER EYEBOLT, WASHERS, LOCK WASHER, NUT, WORKING LOAD LIMIT MIN. 2200 LBS. (TYP)



TYPICAL ATTACHMENT OF BOARD SUPPORT CHAIN TO BUILDING STEEL

DB SIZE & PIXEL LAYOUT	ENCLOSURE SIZE	MAX (AMPS)	WEIGHT (LBS)
A SIZE SS - 128 X 320	48.16"H x 103.32"W x 17.3"D	20	500
A SIZE DS - 128 X 320	48.16"H x 103.32"W x 17.3"D	25	550
B SIZE SS - 96 X 320	38.56"H x 103.32"W x 15.6"D	15	400
B SIZE DS - 96 X 320	38.56"H x 103.32"W x 15.6"D	20	450
C SIZE SS - 32 X 320	15.93"H x 100.13"W x 11.6"D	5	220
C SIZE DS - 32 X 320	15.93"H x 100.13"W x 11.6"D	8	250
D SIZE SS - 16 X 192	5.875"H x 59"W x 6.4"D	3	35
D SIZE DS - 32 X 192	5.875"H x 59"W x 6.4"D	5	40
F SIZE SS - 64 X 320	28.33"H x 102.52"W x 14"D	8	310
F SIZE DS - 64 X 320	28.33"H x 102.52"W x 14"D	10	350

STATIC CONTROLS FULL MATRIX DISPLAY MOUNTING (NOT TO SCALE)

1. LOCATION AND ELEVATION OF EACH UNIT TO BE DETERMINED IN FIELD PER SKETCH PROVIDED BY THE GM PROJECT ENGINEER.
2. MOUNTING METHOD(S) SHOWN ARE FOR REFERENCE ONLY. FINAL MOUNTING METHOD SHALL BE APPROVED BY CCRW AND PLANT ENGINEERING REPRESENTATIVES.

Installation contractor responsible for all local practices/codes and structural load verification

<p>Static Controls Corporation 30460 WIXOM ROAD WIXOM, MI. 48393 (248) 926-4400 FAX (248) 926-4412</p>	Customer Approval	Dr. MT	<p>Part # SCC 982 Layer 1</p> <p>File # 982INST_PL.DWG (Page # 1 of 3)</p> <p>DWG # 982INST-SCC</p>
	By	App	
			Mechanical Tolerances ± 0.010 on 2 Place Decimals ± 0.005 on 3 Place Decimals

SYM	REVISION	APP	DATE
A			

Install of one SCC Andon Board & 10 Speaker Installation Hardware as of 5/22/13

#	Description:	Manufacture	Part/Model Number	Unit of Measure	Unit Cost	Purchase Quantity	Line Item Cost
1	3/8" 3000lb-WLL Galvanized Bolt Nut & Cotter Anchor Shackle	Fastenal Pricing	0504876	each	\$15.19	8	\$121.52
2	5/16" Grade 80 Chain 500 foot drum	Fastenal Pricing	45034	per foot	\$8.32	80	\$665.60
3	1/4" Class 6 x 19 Fiber Core Wire Rope 500 foot need about 80 per board approx \$540 for roll	Fastenal Pricing	45576	per foot	\$1.08	80	\$86.40
4	1/4" Closed Galvanized Wire Rope Thimble	Fastenal Pricing	43443	each	\$0.89	4	\$3.56
5	1/4" Drop Forged Wire Rope Clip	Fastenal Pricing	43423	each	\$5.51	8	\$44.08
6	1/2" High Strength Nut (Furnished with item 8)	Fastenal Pricing		each		4	
7	1/2" Heavy Lock Washer	Fastenal Pricing	33895	each	\$0.23	4	\$0.92
8	1/2"-13 x 4-1/2" Shank Length Hot Dipped Galvanized Drop Forged Eye Bolt	Fastenal Pricing	42445	each	\$10.87	4	\$43.48
9	1/2" High Strength Flat Washer	Fastenal Pricing	33847	each	\$0.46	4	\$1.84
10	Unistrut Channel: 1-5/8" x 2 3/4", 12 Gage, Back-to-Back, Slotted Holes P3001SH	Unistrut (Atkore)	P3001SH	1' (10' sticks)	\$57.00	1	\$57.00
11	Unistrut Flat Plate Fitting: Width 1-5/8" x 1-5/8", Thickness 1/4" P1064	Unistrut (Atkore)	P1064	each	\$0.00	8	\$0.00
12	Unistrut Beam Clamp: 1-5/8" x 5" P2786	Unistrut (Atkore)	P2786	each	\$5.50	4	\$22.00
13	Andon Speaker, SPEAKER STATIC CNTRL 977-SPKR-R EXTERNAL	SCC	1032-006X	each	\$30.00	10	\$300.00
14	1/4" Beam Clamp: Speaker Installation	Appleton	BH-500	each	\$0.42	100	\$42.45
15	Speaker Cable/Wire: Order in 1,000' spools	Belden	8471	per foot	\$0.57	1,000	\$566.36
16	Bridle Rings and Saddles: 1/4"-20 x 7/8" 2 Boxes (50/Box)	B-Line	each	BRS-32A	\$2.00	60	\$120.00
17	Cat5e Cable: General Cable GenSPEED® 5000, 1,000 ft. Pull-Pac® II, Non-Plenum, Blue For one board using 333feet of 1000foot roll	General Cable	each	5133299E	\$0.17	333	\$58.22
18	Wire Nuts: For Speaker Terminations		each			20	\$0.00
						Total Cost	\$2,133.43

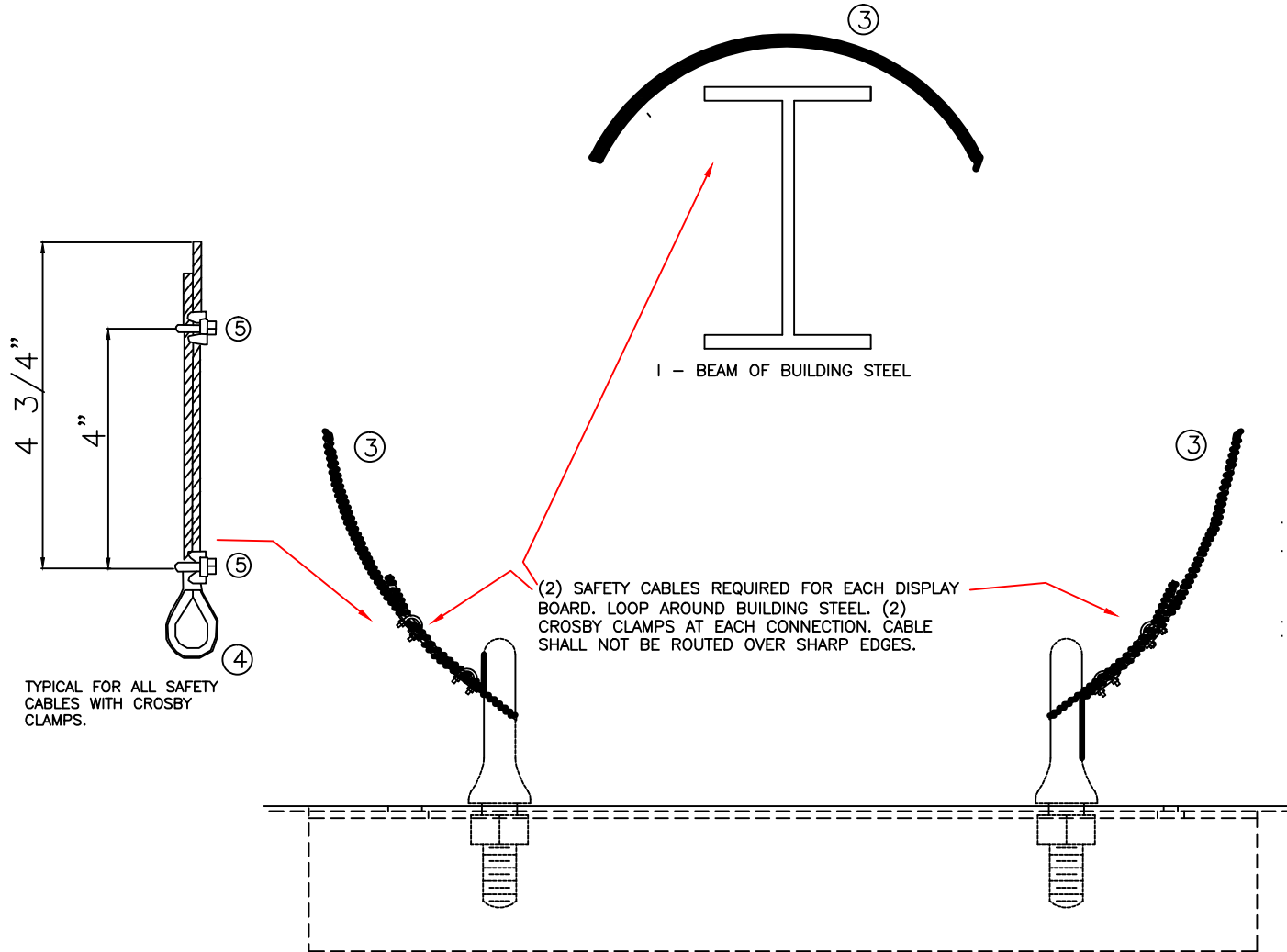
ANDON Board... RED TAG..... Check off List

0)	BASELINE BOARD MUST BE HUNG TO PRINT. (INSTALLATION CONTRACTOR)						
1)	Prints required in ANDON PANEL. (SCC)						
2)	Tag needed both sides of ANDON Board with a. K-CONVEYOR_LB020 120.41.27.25 C29 CB#22 (example) (SCC)						
3)	Current ground wire by contractor is blue.. put green phase tape on the blue wire. (INSTALLATION CONTRACTOR)						
4)	Current common wire by contractor is red..put white phase tape on the red wire. (INSTALLATION CONTRACTOR)						
5)	Label outside Circuit breaker on ANDON BOARD "MAIN" (SCC)						
6)	ESWP Label on both sides of ANDON BOARD (SCC)						
7)	Terminate Speaker Wires (INSTALLATION CONTRACTOR)						
8)	Label Ethernet cable all the way to the board. (INSTALLATION CONTRACTOR)						
9)	SET IPs on ANDON Board Includes IP, subnet mask which is 255.255.255.0 and Gateway which is IP Last octet is 1 (SCC)						
10)	Label Control Breakers in Panel (SCC)						
11)	Review all 4 struts... (SCC)						
12)	Install Brass Tags. Per Plant Engineering Direction at Install of ANDON Board						

Installation contractor responsible for all local practices/codes and structural load verification

 <p>Static Controls Corporation</p> <p>30460 WIXOM ROAD WIXOM, MI. 48393 (248) 926-4400 FAX (248) 926-4412</p>	Customer Approval	By	MT	<p>Title FULL MATRIX BOARD INSTALLATION DRAWING</p> <p>Part # SCC 982 (Layer 1)</p> <p>File # 982INST_PP.DWG (Page # 2 of 3)</p> <p>DWG # 982INST-SCC</p>
	Released for Prod.	Date	App	
				N/A

SYM	REVISION	APP	DATE
A			



BARRICADE PERIMETER TAPE

RED DANGER TAPE (INDICATES HAZARD TO PEOPLE):
CROSSING THIS BARRICADE COULD LEAD TO INJURY.
NEVER CROSS RED BARRICADE TAPE UNLESS GRANTED PERMISSION BY AN AUTHORIZED EMPLOYEE.

SOME EXAMPLES INCLUDE:

- OVERHEAD WORK, ARIAL LIFT, MOBILE CRANE, ETC.
- RIGGING APPLICATIONS



TYPICAL FOR ALL SAFETY CABLES WITH CROSBY CLAMPS.

SEE WEB LINKS FOR MORE INFO.

http://www.constructionafety.ca/toolbox/documents/wireropecableclips_000.pdf
<http://www.fdlake.com/wrclips.html>
http://www.safteng.net/index.php?option=com_content&view=article&id=862&Itemid=178

WARNINGS AND APPLICATION INSTRUCTIONS.

THIS APPLICATION REQUIRES TWO CROSBY WIRE ROPE CLAMPS – INSTALLATION INSTRUCTIONS

- 1st CLAMP APPLY APPROXIMATELY 3/4" FROM DEAD END UBOLT IS PLACED OVER DEAD END OF 1/4" WIRE ROPE. LIVE END REST IN THE SADDLE.
 - 2ND CLAMP APPLY NEAR THE THIMBLE.
- NOTE: ALL NUTS TIGHTEN EVENLY, ALTERNATING TURNS.

Installation contractor responsible for all local practices/codes and structural load verification

	Customer Approval	By	MT	Title	FULL MATRIX BOARD INSTALLATION DRAWING
	Released for Prod.	Date	05/22/2013	Part #	SCC 982
30460 WIXOM ROAD WIXOM, MI. 48393 (248) 926-4400 FAX (248) 926-4412	Mechanical Tolerance	Scale	N/A	DWG #	982INST-SCC
	± 0.010 on 2 Piece Detail				
	± 0.005 on 3 Piece Detail				