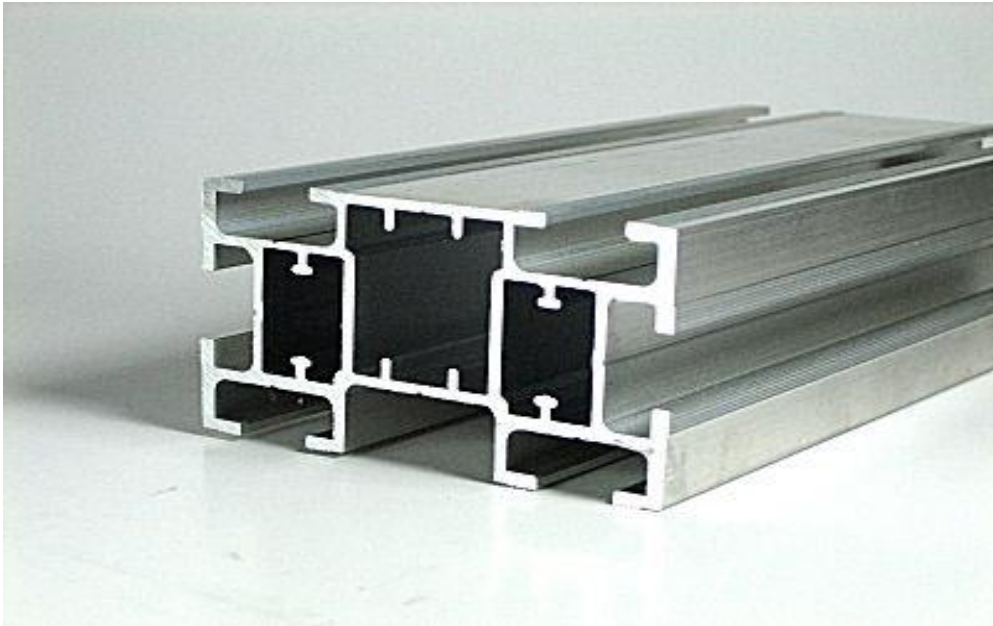
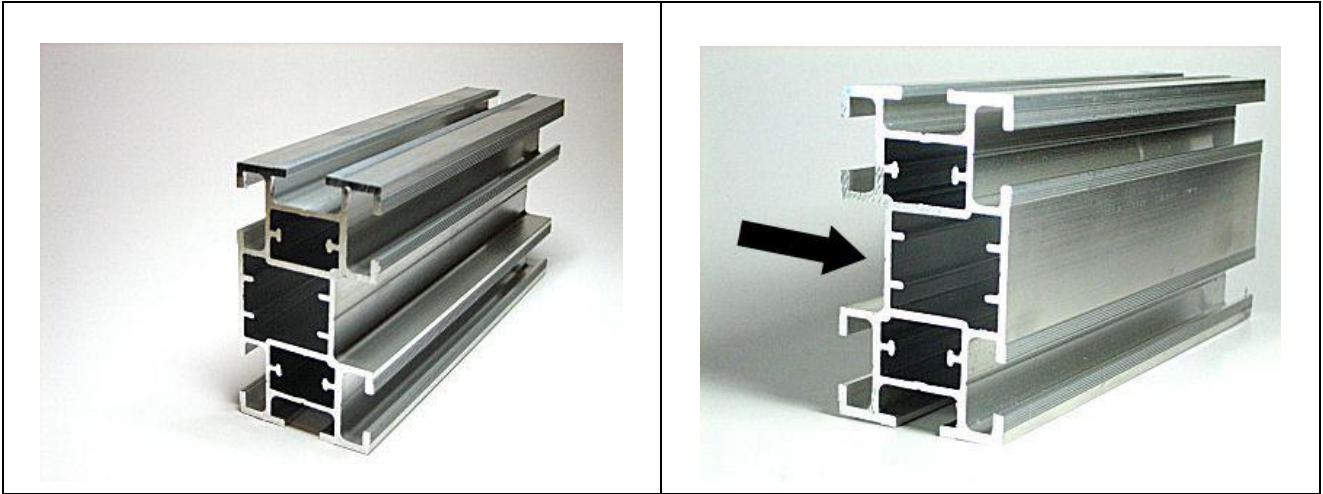


TS44 - Product Data Sheet

UPDATED: 5/20/2016



TS44 Extrusion Features	
Length:	11' 5" or 348 cm
Width :	2.5" or 6.35 cm
Height :	1.5" or 3.81 cm
Weight :	0.92 lbs / foot or 1.37 Kg / m
Bar Weight:	10.56 lbs or 4.79 Kg



Main Applications

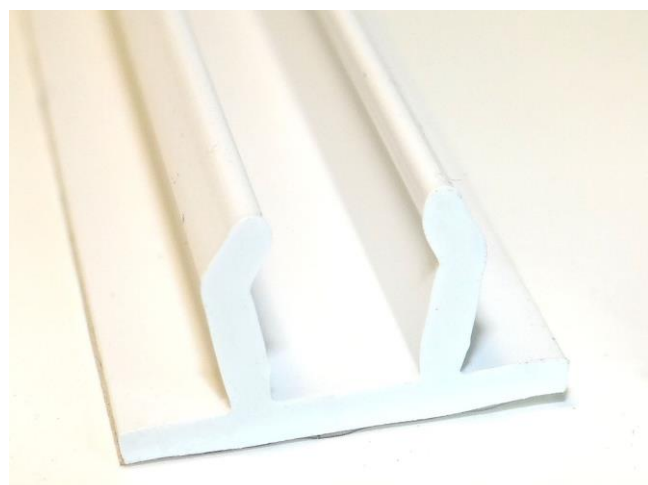
Large and very large framed banners and signs for:

- Advertising
 - Billboards
 - Wall Signs
- Construction sites
- Architectural applications
 - Ceilings
 - Architectural structures with stretched graphics
- Stadium
 - Sports Events
 - Food Courts
- Decoration
 - Shops
 - Malls
 - Facades
- 3D Signs / Shops
 - Booth
 - Monuments

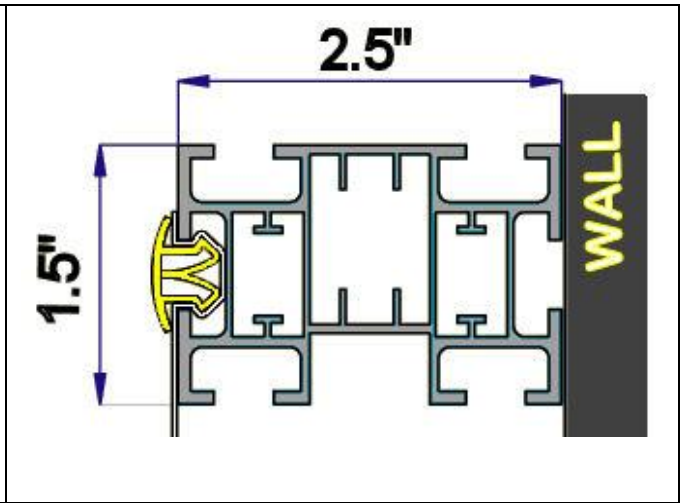
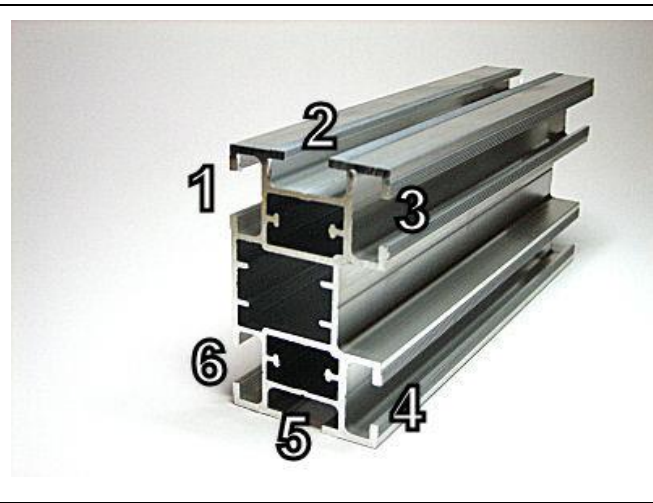


Supported graphic media ranges from:

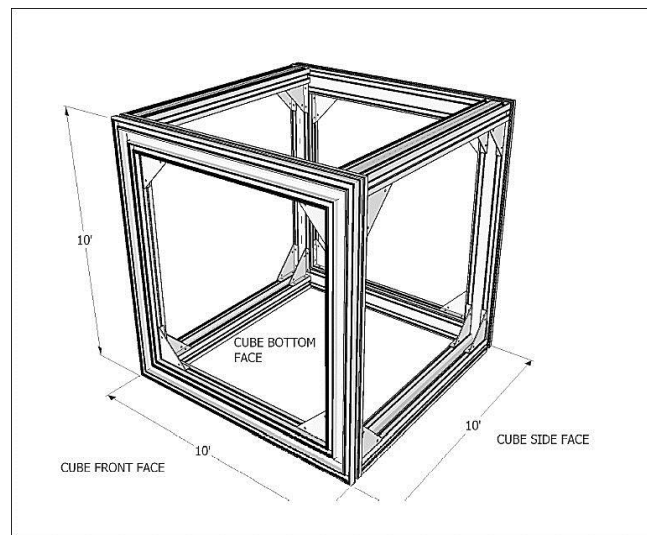
- Vinyl,
- Mesh vinyl,
- Canvas,
- Fabric,
- Polyester,
- Poplin,
- Tyvek ©



The PVC insert (TS79W) is used to fix and stretch the graphic by inserting it in one of the six TS44 aluminum channels.



Some Customers' Realizations



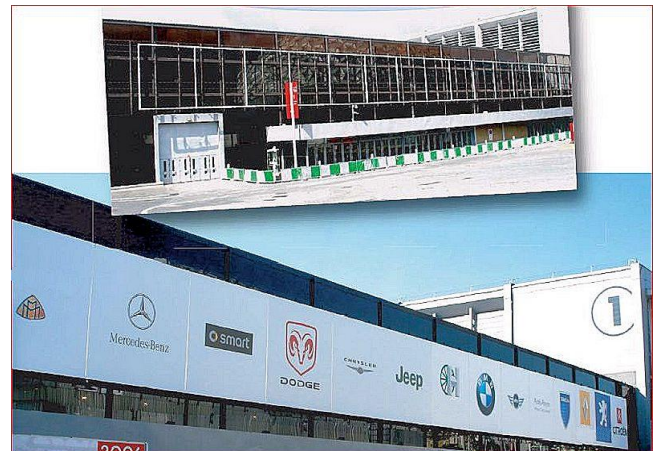
3D Proof-of-Concept realized with Sketch Up 2015.



This 10' x 10' x 10' cube stands at the entrance of a research hospital.



Building Graphics



Multiple Frames



CBU Towers - 32' X 11' TS44Frames

Outdoor Frame on rough wall



Two 17 ft. W x 41 ft. Tall TS44 frames with 13 Oz. vinyl graphics, at the entrance of a Children's hospital.



Three 30ft. W x 50ft. Tall TS44 frames with 13 Oz. vinyl graphics installed on public parking in Montreal.



Jacksonville Jaguars Stadium Frame-95.75' x 40' . Installed on the backside of an elevator. www.Adgraphics.us