



# Cylinders

## INDEX

Two Post Cylinders.....	Page 1
Two Post Cylinder Identification (36" Chain over) ..	Page 2
Two Post Cylinder Identification (Direct Pull).....	Page 3
Four Post Cylinders.....	Page 4
Four Post Cylinder Identification.....	Page 5
Low Rise, Mid Rise, Motor Cycle Identification.....	Page 6
Typical Seal Gland Removal Instructions.....	Page 7

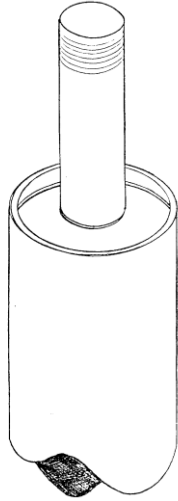


## Two Post Cylinder Chart

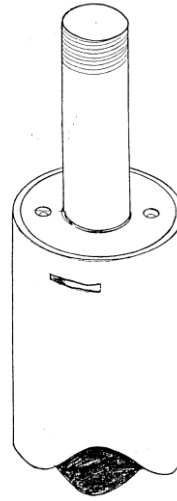
<b>Two Post Lifts</b>		
<b>Cylinder Part Number</b>	<b>Model Lift</b>	<b>Seal Kit</b>
992301	2.5" x 36" 7500, 7B, 8A, 9B, 92AR	991192 (Waltco)
(YG58-9100)	Yoke Roller Assy 116K02 needs to be ordered with 992301 if it does not has a welded yoke	991193 (TMS)
		991305 (Holmac)
		991284 (Prince)
		991512 (TX)
		992301SKAA (Arlington)
YG07-9100	BP9 ETL	YG07-9180
992317	7000A, 9000A, 10000A, DP7, DP9, DP97, IDP9, DP10, I10	991281 (Prince)
	2" x 67.5" Direct Pull Cylinder	991510 (TX)
		992317SKAA (Arlington)
		YG32-9180 (China)
N380	I12	
992322	DP12/DP15	991511 (TX)
	3" x 68" Direct Pull Cylinder	992322SKAA (Arlington)
		994293 (Prince)
		DP15-9180 (China)
992327	DP10 HR High Rise Series	Same as 992317
	2" x 77" Direct Pull Cylinder	
992302	12000TP	See 4-post section
	Old Style, Cylinder on out side of column	

# 2-Post Cylinder Identification

(992301 36" Chain Roller Cylinder)

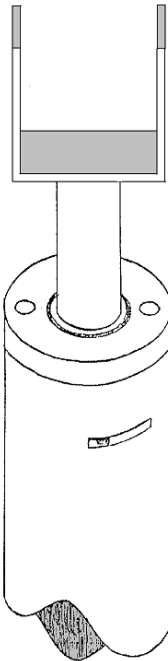


**Waltco - Cylinder**

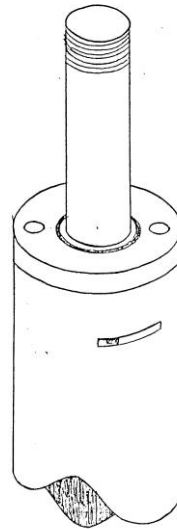


**TMS - Cylinder**

Welded on Yoke



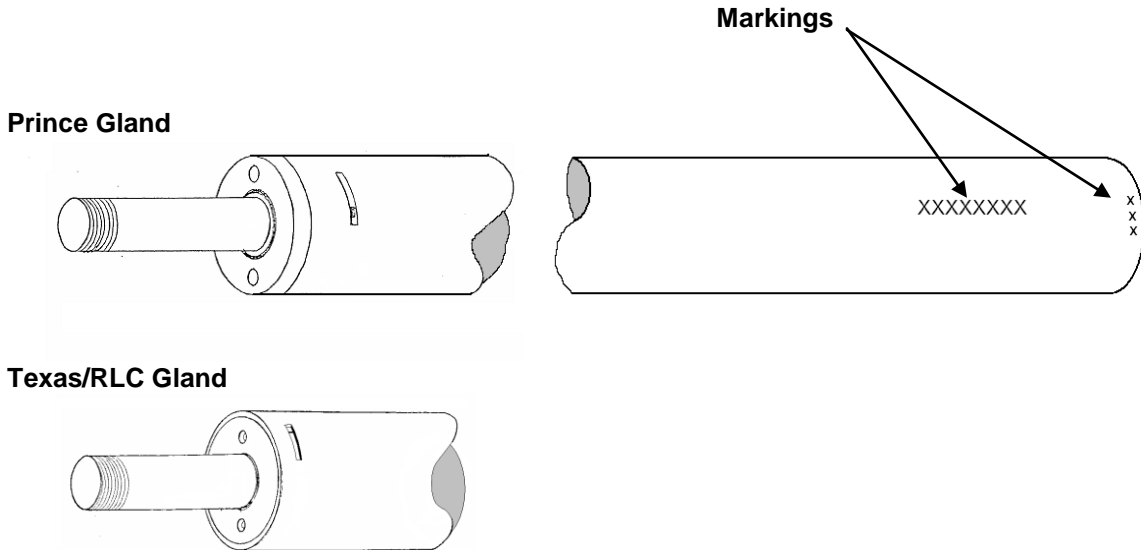
**Prince - Cylinder**



**Holmac - Cylinder**



## 2-Post Cylinder Identification (Direct Pull Cylinder)



To identify the seal kit for a direct pull cylinder, we need to look at the cylinder and see if there are any markings stamped in to the cylinder casing.

For example: Prince Cylinder Markings:  
"AN547" "BF-0498" "W6963984" "S402617"  
"F47284N"

Texas Cylinder Markings:  
"T1D913D-C6" "T70702C6" "N47"

Arlington Cylinder Markings:  
"AA" 440501

RLC Cylinder Markings:  
"07105277"

(Note: The RLC cylinder is flat black in color, all others are glossy black.)

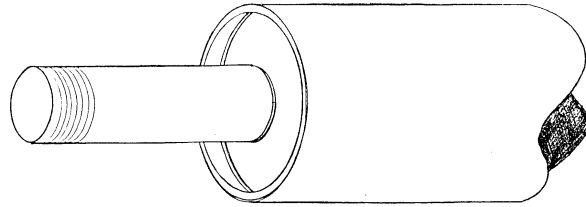


## Four Post Cylinder Chart

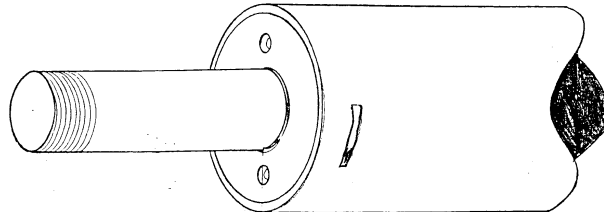
Four Post Lifts		
Cylinder Part Number	Model Lift	Seal Kit
YG36-9100G	EFP9	YG36-9180
992302	LA, AR, AR-O, LR, EWT (4-POST), 12000TP (2-Post) 3.5" x 72" Cylinder	991194 (Waltco) NLA 991195 (TMS) 991306 (Holmac) 991282 (Prince) 991514 (TX) 992302SKAA (Arlington)
992303	27TL, 40RV 60" Cylinder	
992304	5" x 60" 27TL, 27RVL, 40HDL, 50HDL (4-POST) 18000 4-post	991308 (Waltco) NLA 991309 (TMS) 991307 (Holmac) 991283 (Prince) 991515 (TX) 992304SKAA (Arlington)
992326	6" x 60" 60HDL, 60TLA	
994432Kit	CR14 (14000 EWT) Ref: YG18-9100	YG18-9180
994432Kit	CR14 (14000 EWT) ETL version Ref: YG18-9100G2	YG18-9180
S130156	CRO14/OR14/FLR12	S130002-12HY S130002-12PC
FC5810-38	CR18	FC5810-38-12TH
FC5761 (2800900)	CR28/CR30	FC5761-12TH

## Four Post Cylinder Identification

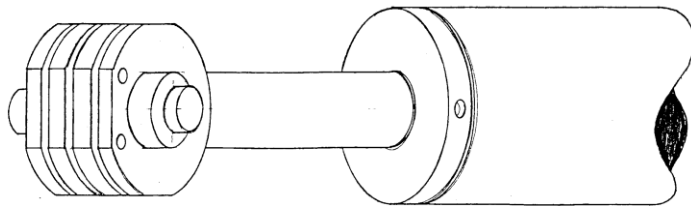
**Watco – Cylinder**



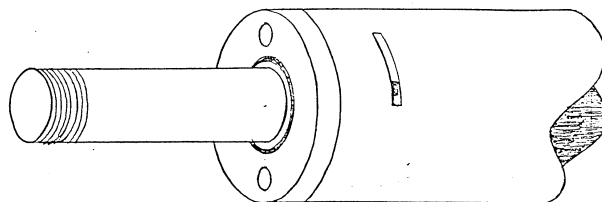
**TMS (Temple) – Cylinder**  
**AA (Arlington) – Cylinder “AA” Markings**  
**TX (Texas)- Cylinder “TX” Markings**



**Holmac – Cylinder**



**Prince – Cylinder**

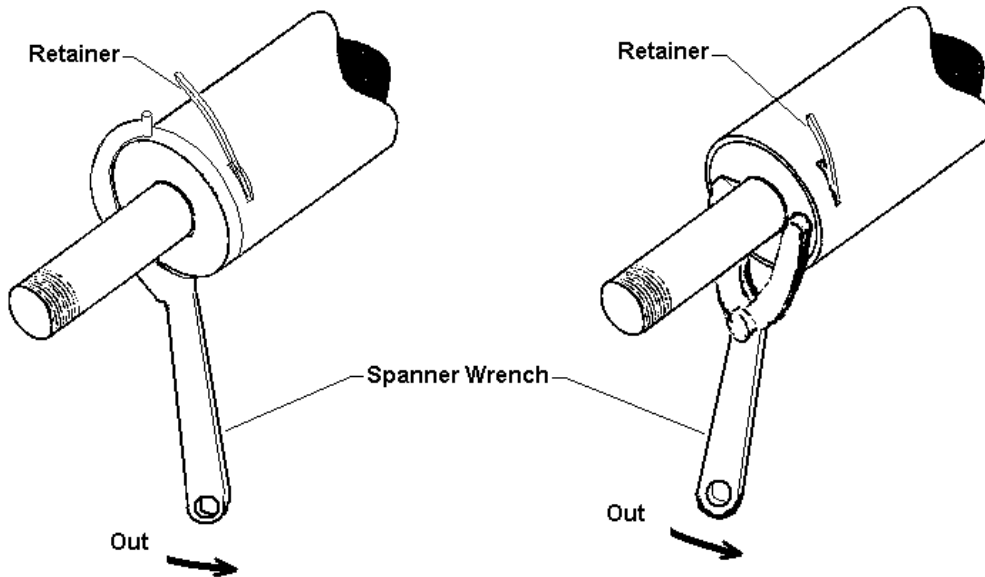




## Misc. Cylinder Chart

<b>Mid-Rise, Low Rise, Motor Cycle</b>		
<b>Cylinder Part Number</b>	<b>Model Lift</b>	<b>Seal Kit</b>
992305	6000TL, 7000TL, 10000TL, Tire Lift 3" x 18"	991513 (TX) 992305SKAA (Arlington) YG42-9180 (China)
992325	6000MRL Mid-Rise Lift, 2.5" x 17 3/8" Ref: YG03-9100	YG03-9180 (China)
YG09-9100	1000MCL (Motor Cycle Lift)	42500-69 & 42500-70 (Kit YG09-9180)

## Typical Seal Gland Removal



### Removing the Gland

The piston rod gland of the cylinder is removed by rotating the gland as shown using the appropriate spanner wrench. The retaining ring is angled in order to catch on the cylinder body and rotate out of the cylinder through the retainer slot. If this edge does not catch, lift it out with a screw driver. Once retainer is removed, gland may be pulled out of cylinder body.

### Installing the Gland

To install, line up retainer hook slot on gland with retainer slot in cylinder body. Insert cleaned and oiled gland until hook slot is visible through retainer slot. Insert Hook end of retainer and rotate gland until retainer is fully inserted into cylinder body.