

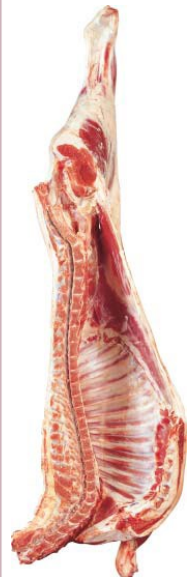
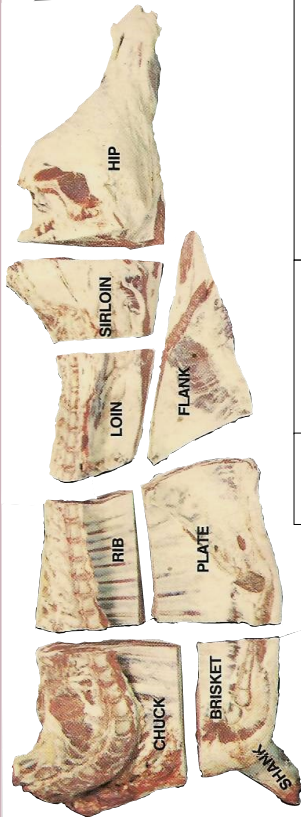
# RED DEER LAKE MEAT PROCESSING LTD.

Located a short, pleasant drive south of Calgary, west of Spruce Meadows

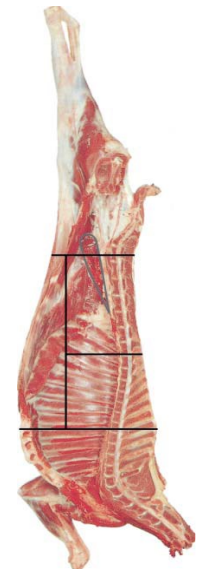
Serving Southern Alberta since 1974

Specializing in Custom Slaughter and locally produced Beef, Lamb, & Pork

## Featuring Local Alberta Beef & Lamb



Alberta Lamb



Alberta Goat

### WHOLE SIDE OF BEEF

Cut From 100% Genuine Local Alberta Dry aged Beef.

1 Hind & 1 Front (Avg. 250-300 lbs.)

Cut, Wrapped, Frozen & Boxed **\$4.49/lb.;** Uncut **\$3.89/lb**

### SPLIT SIDE OF BEEF –(Half Hind and Half Front)

(Approx. Weight before cutting- 150 lbs.)

Cut, Wrapped, Frozen & Boxed **\$4.59/lb**

### FRONT OF BEEF

Rib, Chuck, & Brisket  
(Avg. 130-160 lbs.)

Cut, Wrapped, Frozen & Boxed **\$4.19/lb.** Uncut **\$3.79/lb**

### HIND OF BEEF

Hip, Long Loin, & Flank  
(Avg. 110-140 lbs.)

Cut, Wrapped, Frozen & Boxed **\$4.69/lb.** Uncut **\$4.09/lb**

Price is based on weight before cutting. Price includes cutting, Brown paper freezer wrapping, boxing, and freezing. Custom Beef slaughter also available. Call for current rates & slaughter booking. Custom Beef Slaughter is \$130.00/head; cut & wrap cost: 0.89/lb.

### UNCUT BEEF PRIMALS

**BEEF HIP–Bone in Whole \$4.79/lb.**

**Top( Inside) Round –Whole Bnls \$7.99/lb.**

**Bottom( Outside) Round –Whole Bnls \$7.49/lb.**

**Sirloin Tip –Whole Bnls \$7.99/lb.**

**Whole Blade (chuck)–Bone in uncut \$5.99/lb.**

**Cross Rib–Bone In Whole uncut \$5.99/lb.**

**Brisket Plate–Bone In Whole uncut \$3.99/lb.**

**Top Sirloin Butt –Bnls Whole Uncut \$9.99/lb.**

**Strip Loin –Bnls Whole Uncut \$15.49/lb.**

See reverse side for more retail prices

### ALBERTA LAMB \*Subject to availability

Average Carcass Weight : 45-70 lbs;

Cut, Wrapped, Frozen & Boxed

**Carcass–\$9.99/lb. Side \$10.49/lb.**

### \*CARCASS OF GOAT

Average Weight : 25-40 lbs;

Cut, Wrapped, Frozen & Boxed

**\$12.99/lb.** \*Subject to availability

### CARCASS OF LAMB

Uncut; Market Weight (45-70 lbs)

**\$9.49/lb.** \*Subject to availability

### \*SIDE OF GOAT

Avg. Weight : 13-20 lbs.

Cut, Wrapped, Frozen & Boxed

**\$13.49/lb.** \*Subject to availability

### \*LAMB CUTS \*Subject to availability

Whole Leg Bone In–\$14.49/lb. Side Ribs–\$9.99/lb.

Loin Chops–\$28.50/lb. Whole Rack–\$25.50/lb.

Whole Shoulder Roast–Bone In–\$14.49/lb.

Shoulder Chops–\$14.99/lb Whole Shank–\$9.99/lb.

Boneless Stew–\$15.99/lb Ground Lamb–\$12.99/lb.

### \*CARCASS OF LAMB

Uncut; Head On Spring Lamb;  
Under 30 lbs

**\$14.50/lb.** \*Subject to availability



### Main Plant Address

90093 226 Ave West  
Foothills, AB. T1S 2Z2

Ph.-403-256-4925

Fax: 403-256-8882

Email: info@rdlmeats.ab.ca

Website www.rdlmeats.ab.ca



\*Please Call 403-256-4925 to place an order.

\*Prices in effect until: **Apr 30/2022**

Prices are subject to change. Please Call to verify.

All our Products are from Guaranteed Natural Local Alberta Government Inspected Livestock