

MicroLite 3

Ultra-Compact Wireless HD Video Transmitter

The MicroLite 3 wireless video transmitter features a compact, lightweight chassis, designed to simplify the reliable capture of high-quality, real-time video from cameras for: Electronic News Gathering, Sports and Entertainment applications.

The MicroLite 3 series of transmitters uses HD/SD-SDI and HDMI inputs with the highly-regarded, proprietary Vislink LMS-T modulation. COFDM based, LMS-T modulation enables superior coverage and video quality at the same power levels as DVB-T.

COFDM technology enables the long-range transmission of uninterrupted, live, TV pictures. COFDM combats the effects of challenging terrain, buildings and other common non-line-of-sight limitations. Using COFDM gives the MicroLite 3 Transmitter a significant advantage over uncompressed solutions.

Latency levels down to 70ms make the MicroLite 3 Transmitter well-suited to live sporting events and video assist applications.

The MicroLite 3 Transmitter has minimized power requirements and the flexibility to use 7.4VDC camera lithium ion or camera-back style of batteries. This make it ideal for use with small format cameras.

The optional telemetry package enables long-range camera control and remote radio management. The MicroLite 3 supports Visca protocol, using standard RCPs and PoV type of cameras.



Features

- LMS-T
- HDMI and SDI camera inputs/ outputs
- Internal ISM and GPS anti-jam mitigation
- Broadcast quality video transmission
- Licensed and ISM frequencies
- Low latency <70ms
- Wi-Fi Remote Control
- Built In Transceiver for Telemetry Data

Options

- Dual and Tri-Band Licenses
- Telemetry Package
- PoV Camera Control Package

Applications

- Sporting Events
- Steadicam
- Event Coverage
- Drones

Frequency Band

- 2.0-2.5 GHz
- 3.1-3.5GHz
- 5.15-5.25GHz
- 5.7-5.825GHz
- 2/5 GHz
- Transmit Power
 - 200mW 2-6GHz

Power

- Input Range 10-28VDC

Power Consumption

- 2-6.0GHz <8W

Modulation

- DVB-T (optional)
- LMS-T

Modulation Modes

- QPSK, 16QAM
- Bandwidth
- 4, 6, 8 and 10MHz

Data Rate

- Up to 20 Mbit/s, bandwidth dependent

Control and Status

- Front Panel – Joy Stick
- Wi-Fi – Webpage
- Telemetry Package (OPT)

Video Encoder Profiles

- H.264 Main, High
- 4:2:0 8bit

Video Formats

- 720p@50/59.94/60
- 1080i@50/59.94/60
- 1080p@23.98/24/25/29.97/30
- 1080psf@30/29.97/25/24/23.98

Audio

- Embedded audio over SDI/HD-SDI and HDMI
- MPEG 1 (layer II)
- Sample Rate – 48KH

Latency

- <70ms

User Data

- Selectable 9600-115k baud rate

Physical

Size:

- 92 (L) x 52 (W) x 38 (H) mm
(3.6" (L) x 2" (W) x 1.49" (H))

Weight:

- 208 grams (<10ounces)

Environmental

Operating Temperature:

- -10°C to 50°C
(14°F to 122°F)

Optional Telemetry Package

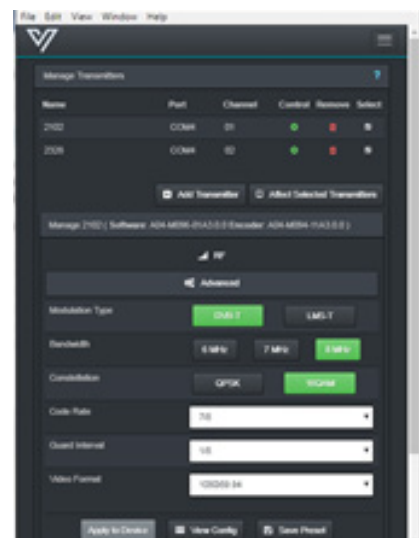
The optional telemetry package enables bidirectional data for long range over-the-air camera control and remote control, as well as critical meta data.

The camera control supports Visca protocol using standard RCPs and PoV type of cameras. The Vislink Remote Control Application enables remote control from your PC, using the FocalPoint DF Transceiver System.

The telemetry package includes:

- Telemetry License
- Focal Point DragonFly (data transceiver with fiber converter)
- Telemetry Antenna
- Fiber Extender (optional)
- PC Tablet Installable Remote Control Application
- Marshall Camera (optional):
 - CV505 series
 - CV502 series
 - CV565 series
 - CV225 Lipstick
- Marshall RCP – CV-RCP-V2
- Test cables
- Camera Mounting Options

Remote Control Application



Telemetry Package

