

		INDEX OF DRAWINGS											
		05-27-2016	PERMIT SET	06-19-2016	REVISION #1	06-24-2016	REVISION #2	07-01-2016	REVISION #3				
SHEET	DESCRIPTION												
GENERAL													
A0.01	COVER SHEET		●										
A0.02	INDEX OF DRAWINGS		●	●	●	●							
LS1.01	STORAGE BUILDING LIFE SAFETY PLAN		●										
CIVIL													
C.2	LAYOUT PLAN		●										
C.3	PAVING GRADE & DRAINAGE PLAN		●										
C.4	WATER & SEWER PLAN		●	●									
LANDSCAPE													
LA1.01	LANDSCAPE PLANS		●										
LA2.01	LANDSCAPE NOTES, SPECIFICATIONS AND DETAILS		●										
ARCHITECTURE													
A2.01	SITE PLAN		●	●									
A3.01	STORAGE BUILDING PLAN		●	●									
A3.02	ROOF PLAN		●										
A4.01	STORAGE BUILDING ELEVATIONS		●	●									
A4.02	STORAGE BUILDING ELEVATION		●										
A5.01	STORAGE BUILDING SECTIONS		●										
A6.01	STORAGE BUILDING REFLECTED CEILING PLAN		●	●									
A7.01	WALL SECTION		●										
A8.01	DETAILS		●										
A8.02	DETAILS		●										
A9.01	SCHEDULES		●	●	●								
STRUCTURE													
S1.01	GENERAL NOTES		●										
S2.01	FOUNDATION AND GROUND FLOOR PLANS		●	●									
S2.02	ROOF FRAMING PLANS		●	●	●								
A3.01	GROUND LEVEL DETAILS		●										
A3.02	MASONRY DETAILS		●	●	●	●							

		05-27-2016	PERMIT SET	06-19-2016	REVISION #1	06-24-2016	REVISION #2	07-01-2016	REVISION #3				
SHEET	DESCRIPTION												
PLUMBING													
P3.01	PLUMBING STORAGE BUILDING AND RESTROOMS PLANS		●										
P5.01	ISOMETRICS		●										
P6.01	NOTES, SCHEDULES AND DETAILS		●	●									
P6.02	DETAILS		●										
MECHANICAL													
M1.01	LEGEND AND SCHEDULES		●										
M3.01	HVAC- STORAGE BUILDING AND RESTROOM PLANS		●	●									
M8.01	DETAILS		●										
ELECTRICAL													
E1.01	LEGEND AND GENERAL NOTES		●										
E1.02	OVERALL ELECTRICAL SITE PLAN		●										
E3.01	STORAGE BUILDING LIGHTING		●										
E4.01	STORAGE BUILDING POWER AND SYSTEMS PLAN		●	●									
E6.01	POWER RISER DIAGRAM AND ELECTRICAL ROOMS		●										
E6.02	FIRE ALARM RISER AND NOTES		●										
E7.01	DETAILS		●										
E8.01	PANEL SCHEDULES		●										

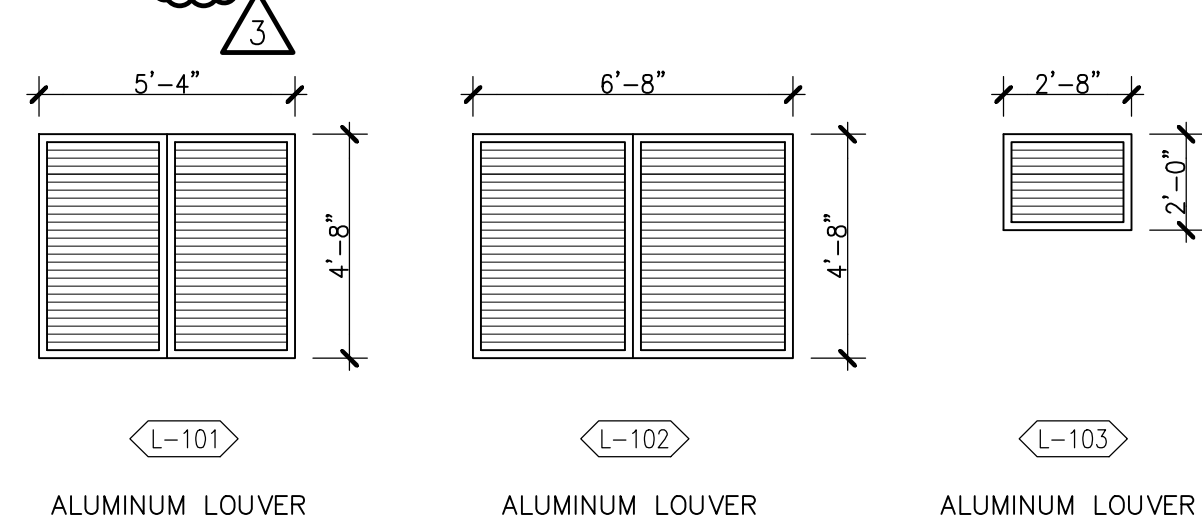
STORAGE BUILDING								
DOOR TYPE				DOOR SIZE		REQUIREMENTS		
MARK	TYPE	MATERIAL	FRAME	WIDTH X HEIGHT	PLAN DETAIL	THREASH	HDWR GROUP	REMARKS
101	I	H.M.	H.M.	3'-8" x 7'-0"	6/A8.02	—	5	—
102	I	H.M.	H.M.	3'-8" x 7'-0"	6/A8.02	5/A8.02	5	—
103	IV	H.M.	H.M.	12'-0" x 10'-0"	—	—	—	—
104	I	H.M.	H.M.	3'-0" x 7'-0"	6/A8.02	5/A8.02	5	—
105	V	H.M.	H.M.	12'-0" x 10'-0"	—	—	—	—
106	I	H.M.	H.M.	3'-0" x 7'-0"	6/A8.02	5/A8.02	5	—
107	II	H.M.	H.M.	(2) 3'-0" x 7'-0"	6/A8.02	5/A8.02	2	—
108	III	H.M.	H.M.	3'-0" x 7'-0"	6/A8.02	—	3	—
109	III	H.M.	H.M.	3'-0" x 7'-0"	6/A8.02	—	6	—
110	III	H.M.	H.M.	2'-2" x 7'-0"	6/A8.02	—	1	—
111	III	H.M.	H.M.	3'-0" x 7'-0"	6/A8.02	—	1	—
112	III	H.M.	H.M.	2'-10" x 7'-0"	6/A8.02	—	1	—
113	III	H.M.	H.M.	3'-0" x 7'-0"	6/A8.02	—	1	—
114	III	H.M.	H.M.	3'-0" x 7'-0"	6/A8.02	—	1	—

GENERAL DOOR NOTES

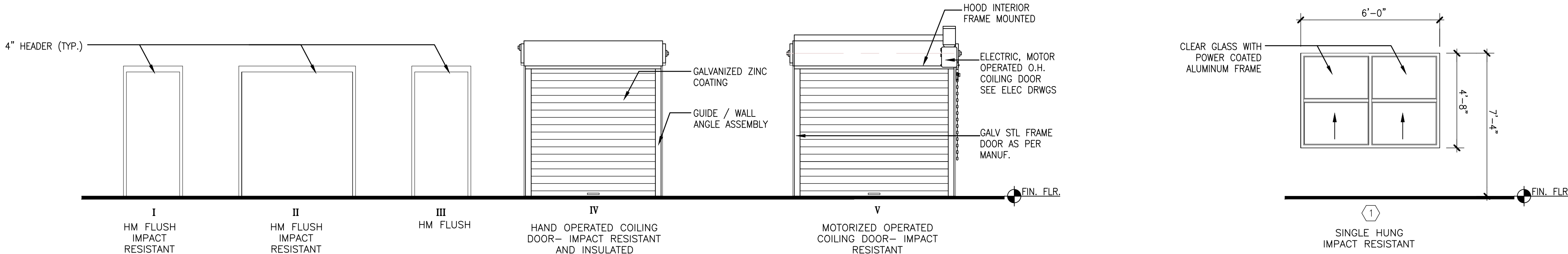
1. ALL EXTERIOR DOORS SHALL HAVE MIAMI-DADE COUNTY NOTICE OF ACCEPTANCE (NOA) OR FLORIDA PRODUCT APPROVAL.
2. ALL LABELED AND SMOKE DOORS TO HAVE CLOSER AND POSITIVE LATCH.
3. ALL THRESHOLDS SHALL BE ADA COMPLIANT. APPROVAL (HVHZ) FOR LARGE MISSILE IMPACT RESISTANCE, WIND PRESSURE, AND WATER INFILTRATION
4. PROVIDE 3/4" UNDERCUT AT ALL INTERIOR DOORS UNLESS OTHERWISE NOTED. REQUIREMENTS. REFER TO STRUCTURAL DRAWINGS FOR WIND PRESSURES.
5. FIELD VERIFY SIZE OF EXISTING OPENING. SUBSTRATE/ ATTACHMENT TO COMPLY WITH NOA REQUIREMENTS. VERIFY THAT COILING MECHANISM FITS INTO EXISTING HEADER SPACE.

LOUVER SCHEDULE			
MARK	SIZE (W x H)	TYPE	REMARKS
L-101	5'-4" x 4'-8"	ALUMINUM	
L-102	6'-8" x 4'-8"	ALUMINUM	
L-103	2'-8" x 2'-0"	ALUMINUM	

- GENERAL NOTES:
1. ALL EXTERIOR LOUVERS ARE RATED FOR IMPACT SHALL COMPLY WITH STATE OF FLORIDA PRODUCT APPROVAL – N.O.A. FOR IMPACT RESISTANCE AND PRESSURE REQUIREMENTS. LARGE MISSILE IMPACT FOR LOUVERS LOCATED UP TO 30'-0" ABOVE GRADE (ANY PART OF THE LOUVER). REFER TO STRUCTURAL DRAWINGS FOR WIND PRESSURES.
2. ALL ALUMINUM SHALL BE POWDER COATED IN COLOR SELECTED BY ARCHITECT.
3. CONTRACTOR TO COORDINATE EXACT ROUGH OPENING REQUIREMENTS W/ N.O.A OF SELECTED MANUFACTURER. DIMENSIONS NOTED ARE NOMINAL AND COURSE WITH CMU UNITS.
4. PROVIDE BIRD SCREENS FOR ALL LOUVERS



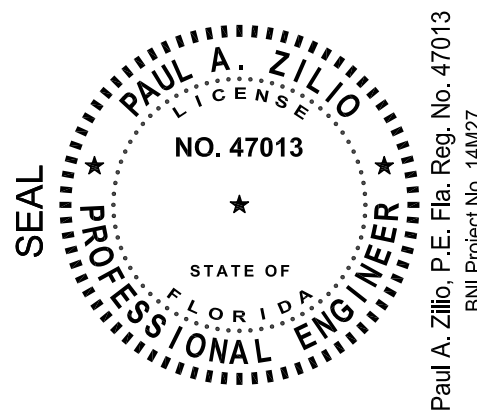
BUILDING 1 - WINDOW SCHEDULE				
MARK	SIZE (W x H)	MATERIAL	PRODUCT APPROVAL	REMARKS
①	6'-0" x 4'-8"	ALUMINUM	—	DOUBLE HUNG



ROOM FINISH SCHEDULE						
	DESIGNATION	FLOORS	BASE	WALLS	CEILING	REMARKS
ROOM No:	ROOM NAME	MATERIAL/FINISH	MATERIAL/FINISH	MATERIAL/FINISH	MATERIAL/FINISH	
STORAGE BUILDING						
101	RETAIL/ STORAGE	SEALED CONCRETE	—	PAINTED	EXPOSED	
102	EXHIBIT STORAGE	SEALED CONCRETE	—	PAINTED	EXPOSED	
103	SECURED STORAGE	SEALED CONCRETE	RESILIENT BASE	PAINTED	GYP.BD./PAINTED	EPOXY PAINT
104	RESTROOM/ SHOWER	PORCELAIN TILE	PORCELAIN TILE	PAINTED	GYP.BD./PAINTED	EPOXY PAINT
105	BREAK ROOM	PORCELAIN TILE	PORCELAIN TILE	PAINTED	ACCOUSTICAL TILE	
106	WORK SHOP	SEALED CONCRETE	RESILIENT BASE	PAINTED	EXPOSED	
107	COMPRESSOR/ STORAGE ROOM	SEALED CONCRETE	RESILIENT BASE	PAINTED	EXPOSED	
108	STORAGE ROOM	SEALED CONCRETE	—	PAINTED	EXPOSED	
109	JANITORS CLOSET	SEALED CONCRETE	—	PAINTED	GYP.BD./PAINTED	EPOXY PAINT
110	IT ROOM	SEALED CONCRETE	—	PAINTED	GYP.BD./PAINTED	EPOXY PAINT



SEMINOLE AH-THA-THI-KI
STORAGE BUILDING
34450 W BOUNDARY ROAD
CLEWISTON, FL 33440



MARCEL R. MORLOTTE, A.I.A.
FL. ARCHITECT
FL. ARCH. REG. NO. 9564

WA PROJECT NO.: 21524.00

ISSUE DATE
05/27/2016

NO.	REVISION DATE
1	06-19-2016
3	07-01-2016

DRAWING TITLE

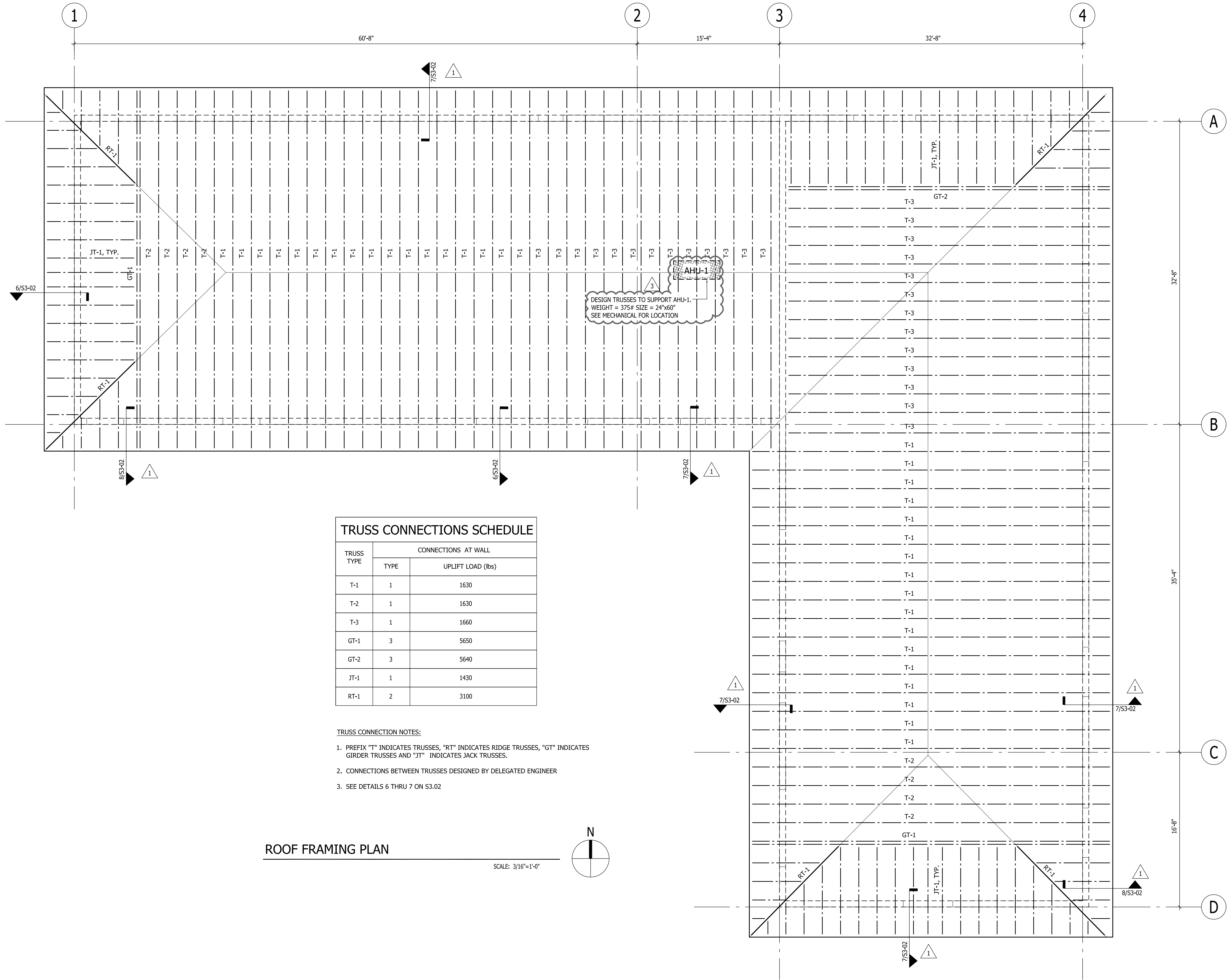
Foundation and Ground Floor Plan

SHEET NUMBER

S2.02



BLISS & NYITRAY, INC.
STRUCTURAL ENGINEERS
Certificate of Authorization No. CA 674
800 Douglas Road, Suite 300
Coral Gables Florida, 33134
Tel. (305) 442-7086 Fax (305) 632-5291
www.bnengineering.com
Paul A. Zillo, P.E. Fla. Reg. No. 47013
BNI Project No. 16M16

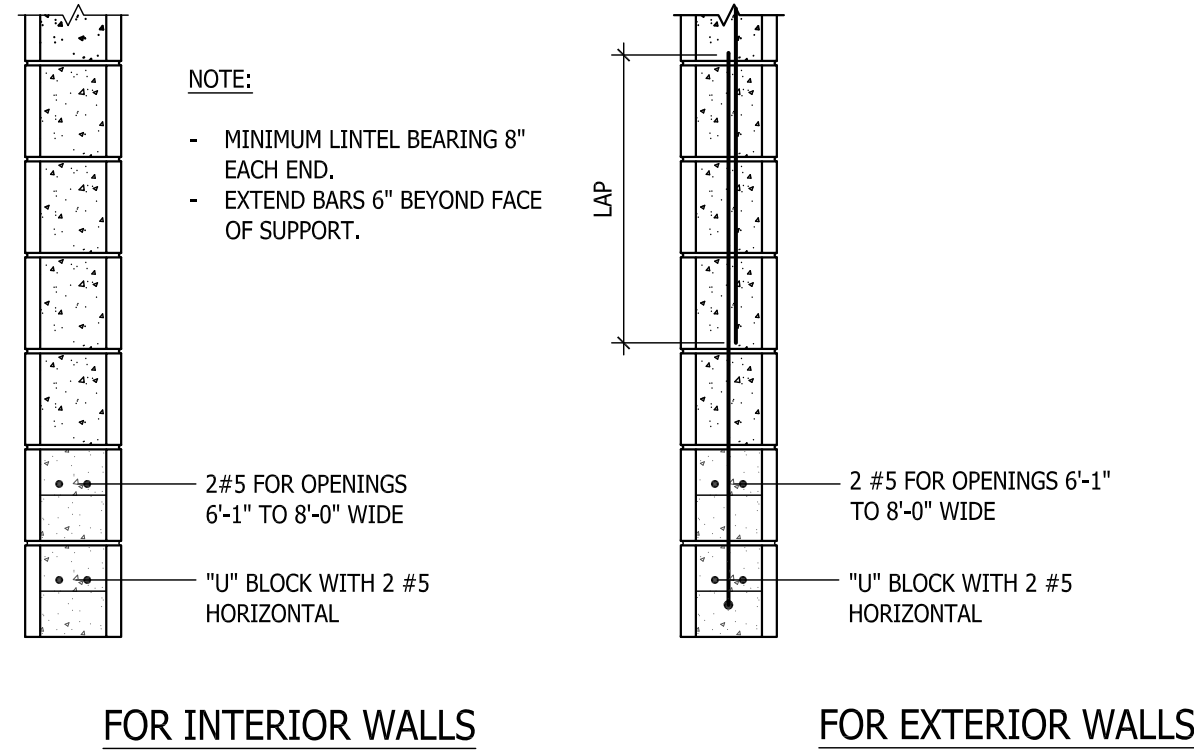
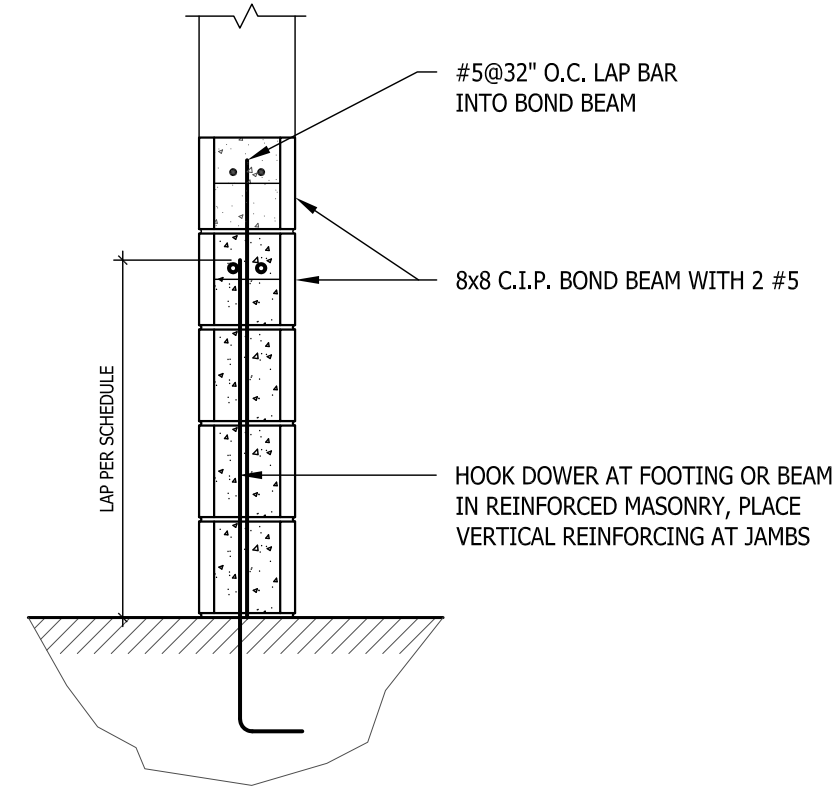
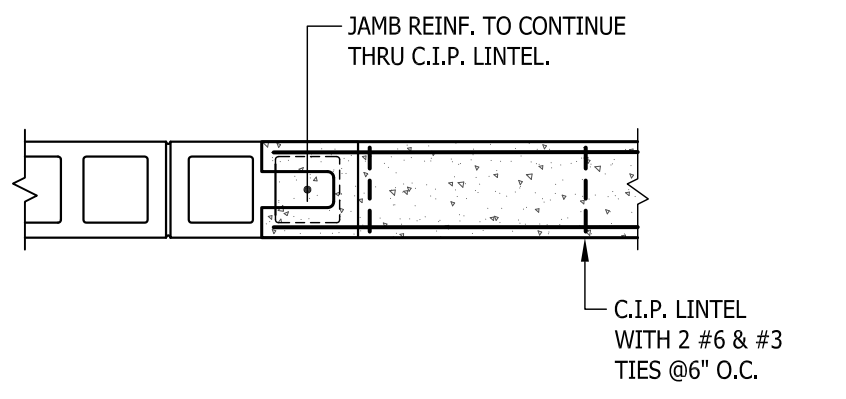
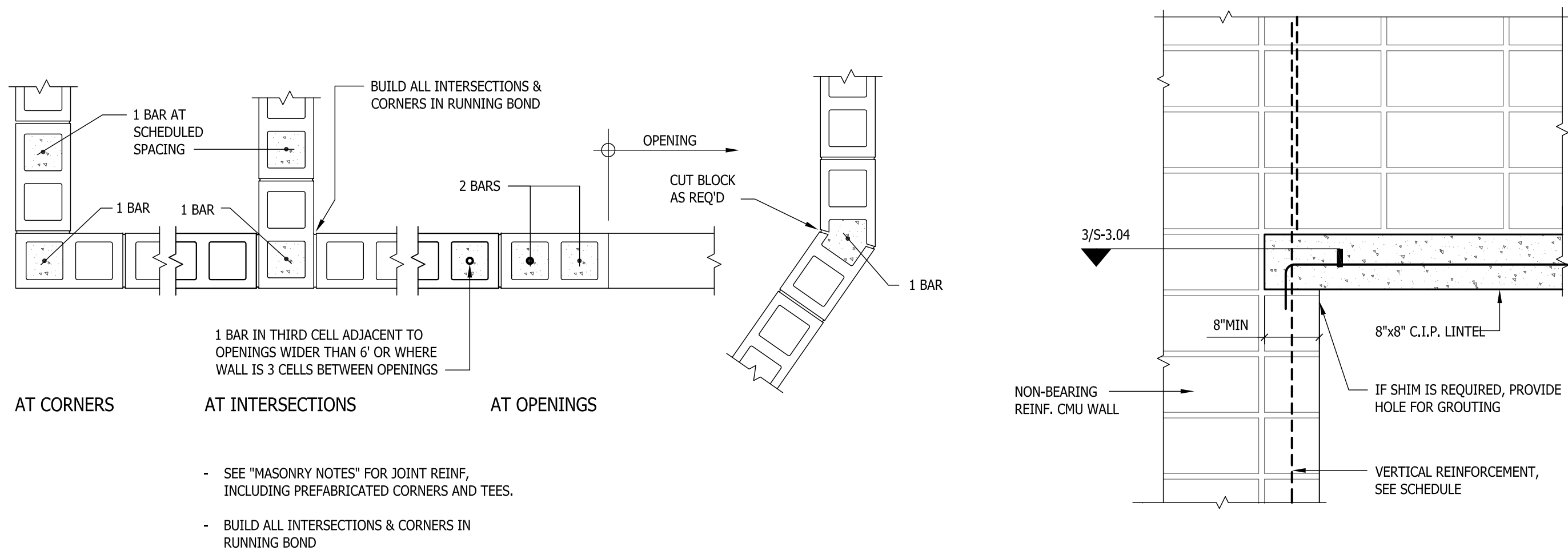


TRUSS CONNECTIONS SCHEDULE		
TRUSS TYPE	CONNECTIONS AT WALL	
	TYPE	UPLIFT LOAD (lbs)
T-1	1	1630
T-2	1	1630
T-3	1	1660
GT-1	3	5650
GT-2	3	5640
JT-1	1	1430
RT-1	2	3100

- TRUSS CONNECTION NOTES:
- PREFIX "T" INDICATES TRUSSES, "RT" INDICATES RIDGE TRUSSES, "GT" INDICATES GIRDER TRUSSES AND "JT" INDICATES JACK TRUSSES.
 - CONNECTIONS BETWEEN TRUSSES DESIGNED BY DELEGATED ENGINEER
 - SEE DETAILS 6 THRU 7 ON S3.02

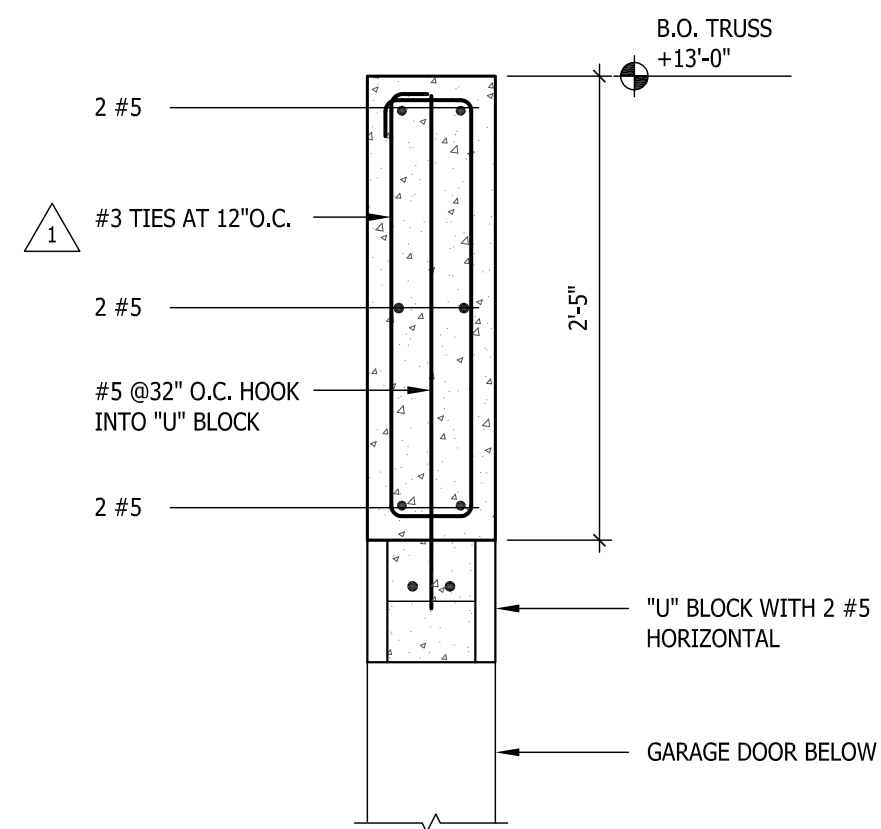
ROOF FRAMING PLAN

SCALE: 3/16"=1'-0"



1 MASONRY WALL REINFORCING

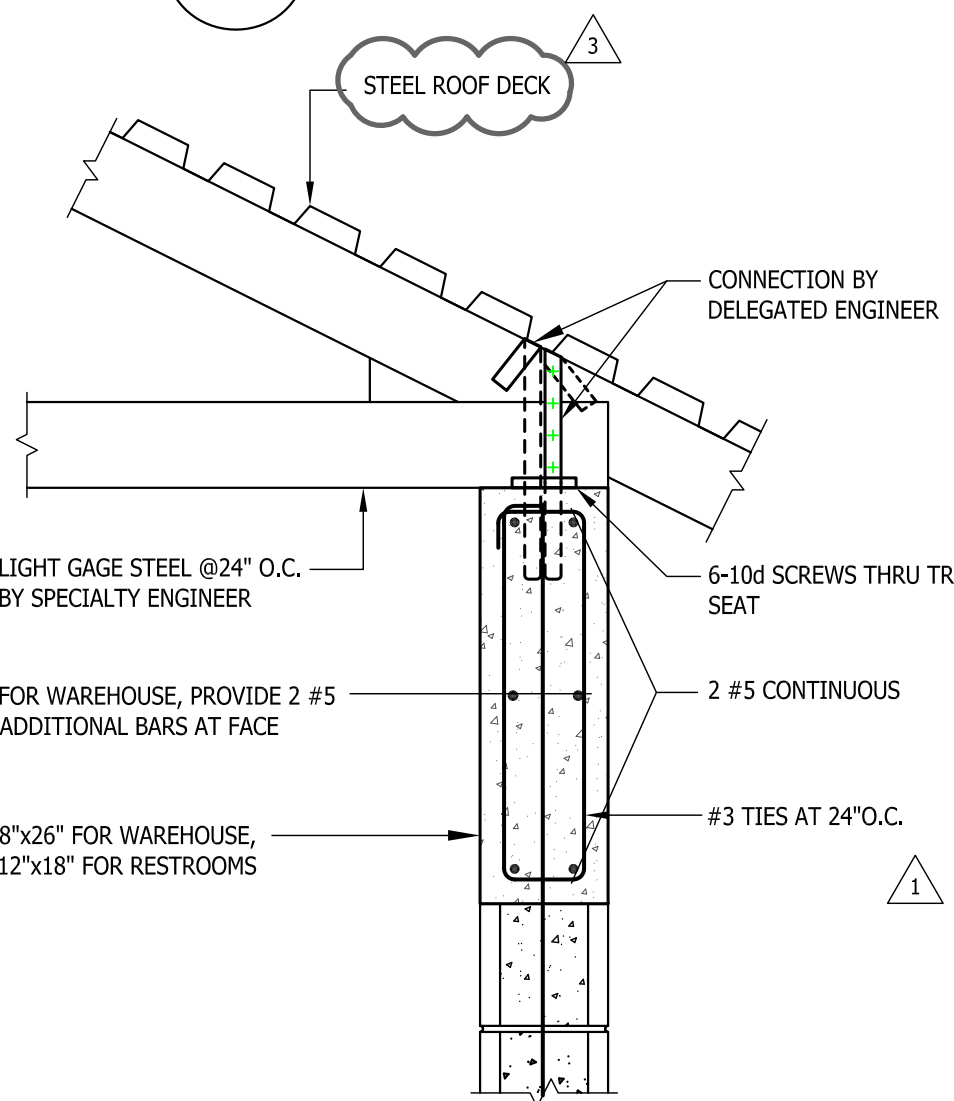
NOT REQUIRED IN UN-REINFORCED WALLS



6 TRUSS CONNECTION TO CMU WALL

TYPES 1 AND 2

2 CONCRETE LINTEL SUPPORT

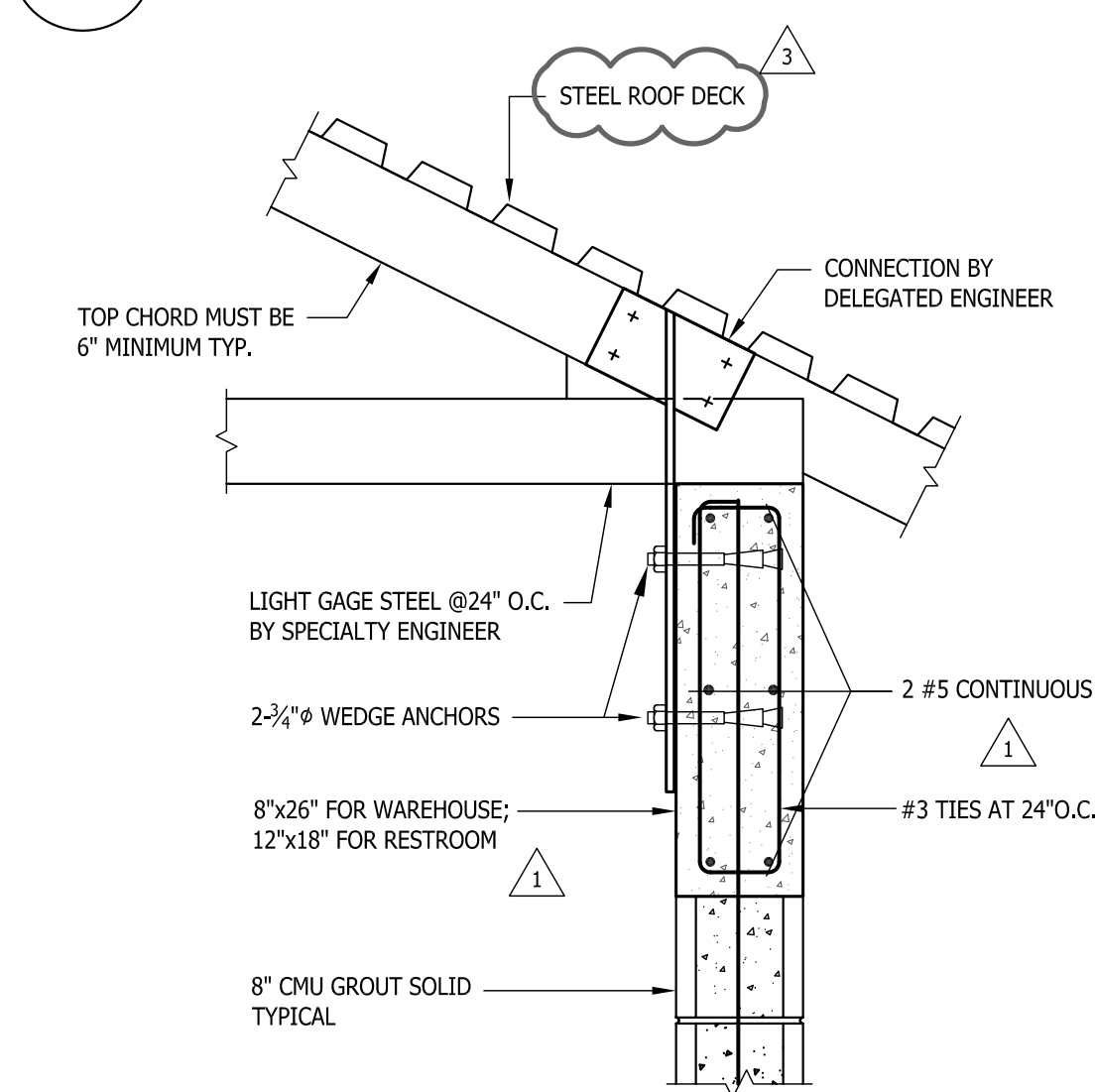


7 TRUSS CONNECTION TO CMU WALL

TYPES 1 AND 2

3 CONCRETE LINTEL SUPPORT

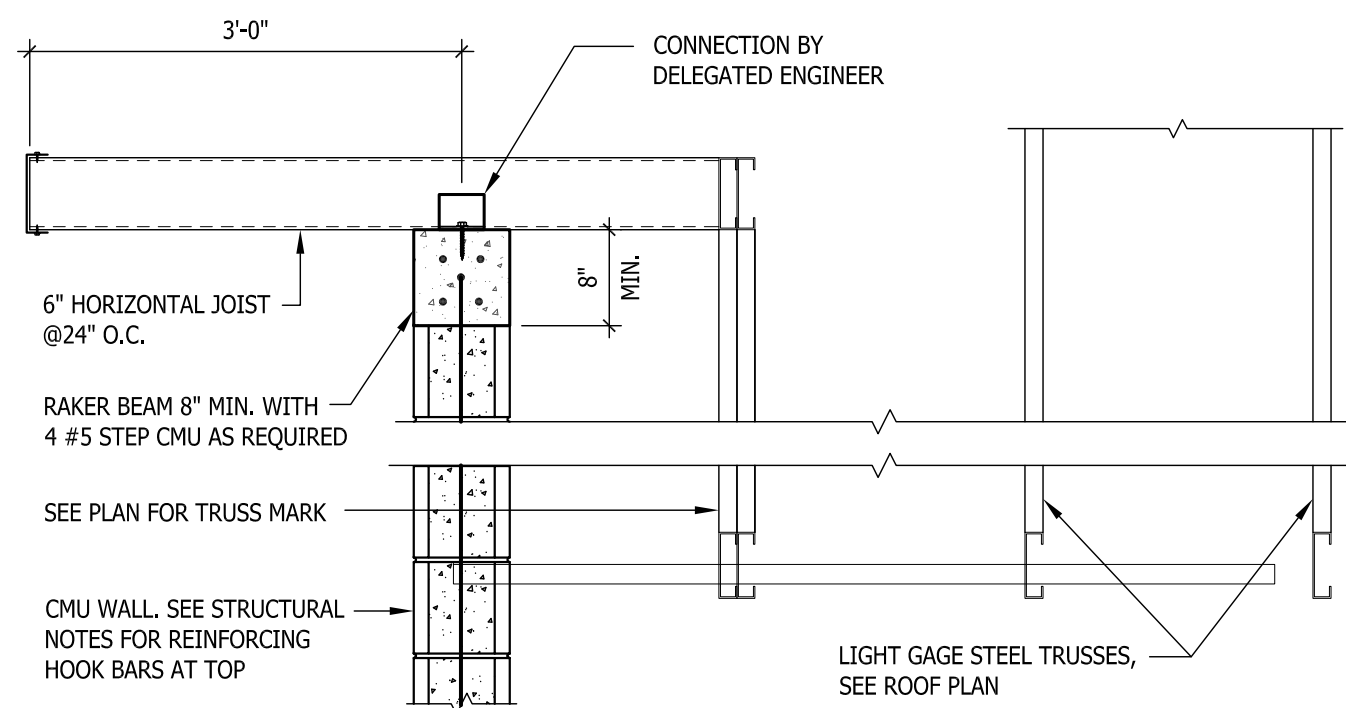
PLAN DETAIL



8 TRUSS CONNECTION TO TOP OF WALL

TYPE 3

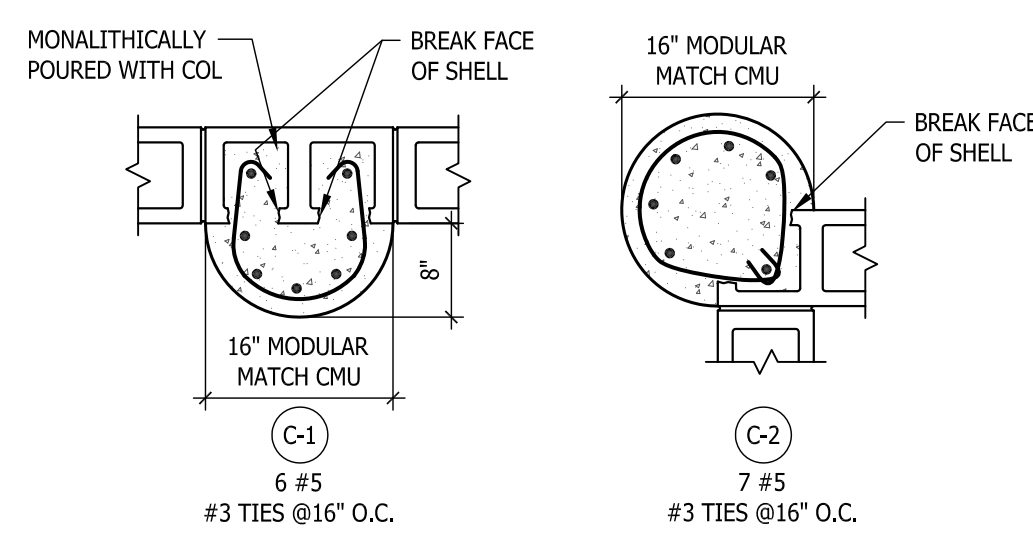
4 TYPICAL MASONRY SILL DETAIL



9 TYP. DETAIL @ OVERHANGS

5 TYPICAL LINTEL DETAIL

SEE ARCHITECTURAL DRAWINGS FOR LOCATION



COLUMN TYPE

WOLFBERG ALVAREZ



3225 AVIATION AVE., SUITE 400
MIAMI, FLORIDA 33133
V 305.666.5474
F 305.666.4994
WOLFBERGALVAREZ.COM
AA 002416 EB 002354

**SEMINOLE AH-TA-THI-KI
STORAGE BUILDING**
34450 W BOUNDARY ROAD
CLEWISTON, FL 33440

SEAL

MARCEL R. MORLOTTE, A.I.A.
FL. ARCHITECT
FL. ARCH. REG. NO. 9564

WA PROJECT NO.: 21524.00

ISSUE DATE

05/27/2016

NO.	REVISION DATE
1	06-19-2016
3	07-01-2016

DRAWING TITLE

Masonry Details

SHEET NUMBER

S3.02

Bl
BLISS & NYITRAY, INC.
STRUCTURAL ENGINEERS
Certificate of Authorization No. CA 674
800 Douglas Road, Suite 300
Coral Gables Florida, 33134
Tel. (305) 442-7086 Fax (954) 632-5291
www.bnienr.com
Paul A. Zillo, P.E. Fla. Reg. No. 47013
BNI Project No. 16M16