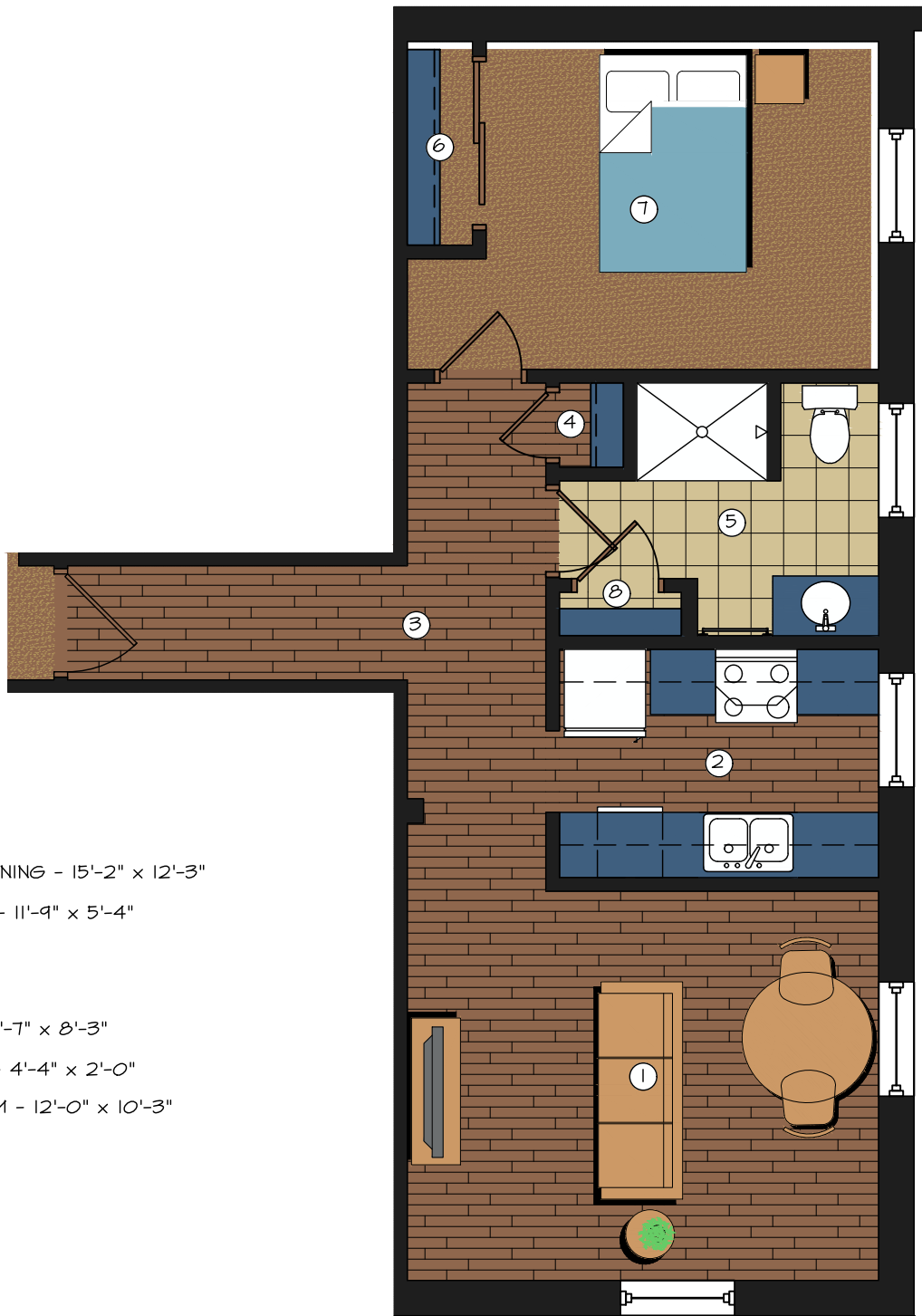


- ① LIVING/DINING - 15'-2" x 12'-3"
- ② KITCHEN - 11'-9" x 5'-4"
- ③ HALLWAY
- ④ COATS
- ⑤ BATH - 8'-7" x 8'-3"
- ⑥ CLOSET - 4'-4" x 2'-0"
- ⑦ BEDROOM - 12'-0" x 10'-3"

NOTE: DIMENSIONS MAY VARY FROM UNIT TO UNIT

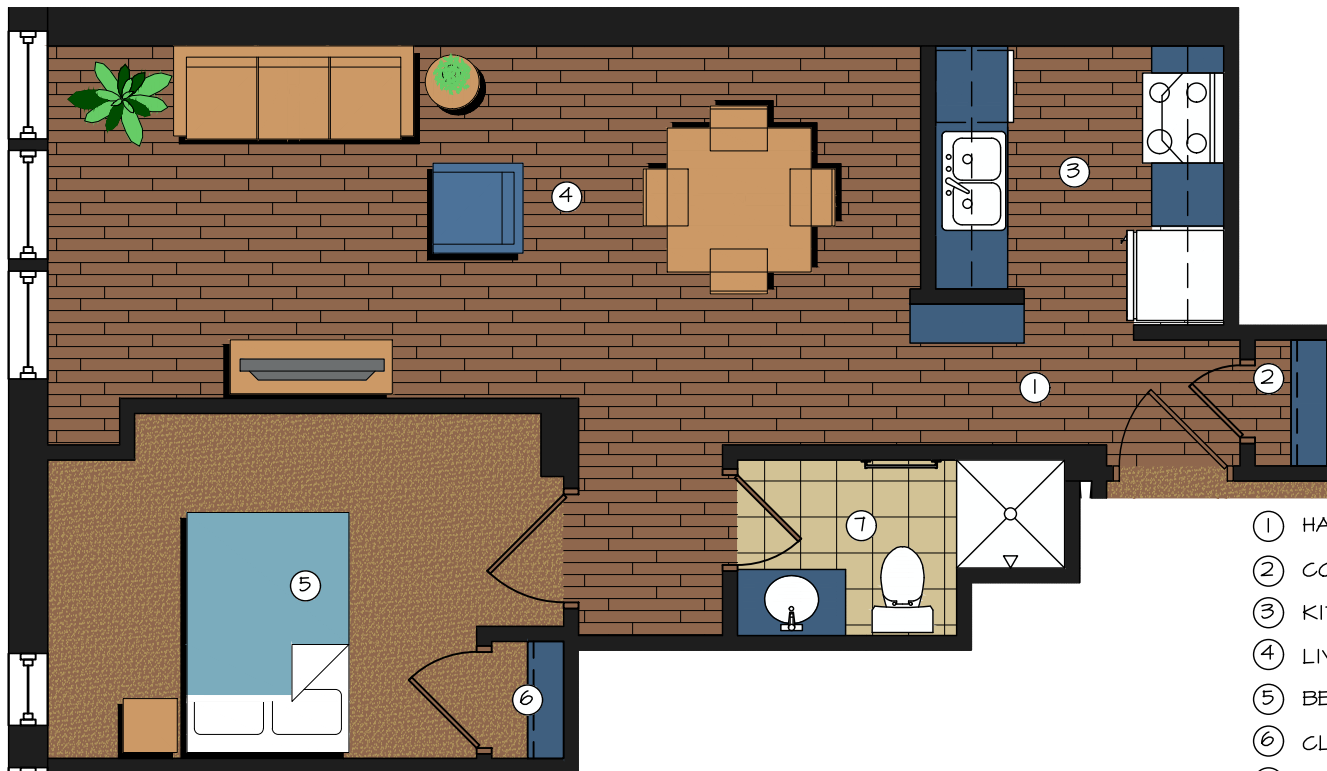
Will Rogers Lofts
 Claremore, Oklahoma
 Unit 201 - 1 BR
 583 sf



- ① LIVING/DINING - 15'-2" x 12'-3"
- ② KITCHEN - 11'-9" x 5'-4"
- ③ HALLWAY
- ④ COATS
- ⑤ BATH - 8'-7" x 8'-3"
- ⑥ CLOSET - 4'-4" x 2'-0"
- ⑦ BEDROOM - 12'-0" x 10'-3"
- ⑧ LINEN

NOTE: DIMENSIONS MAY VARY FROM UNIT TO UNIT

Will Rogers Lofts
 Claremore, Oklahoma
 Unit 202 - 1 BR
 663 sf



- ① HALLWAY
- ② COATS
- ③ KITCHEN - 8'-2" x 8'-0"
- ④ LIVING/DINING - 11'-1" x 24'-3"
- ⑤ BEDROOM - 9'-7" x 14'-4"
- ⑥ CLOSET - 2'-0" x 3'-3"
- ⑦ BATH - 4'-11" x 9'-1"

NOTE: DIMENSIONS MAY VARY FROM UNIT TO UNIT

Will Rogers Lofts
 Claremore, Oklahoma
 Unit 301 - 1 BR
 615 sf



- ① HALLWAY
- ② COATS
- ③ KITCHEN - 7'-7" x 7'-3"
- ④ LIVING/DINING - 11'-6" x 13'-7"
- ⑤ BEDROOM - 12'-2" x 14'-4"
- ⑥ CLOSET - 4'-11" x 5'-3"
- ⑦ BATH - 5'-3" x 9'-0"

NOTE: DIMENSIONS MAY VARY FROM UNIT TO UNIT

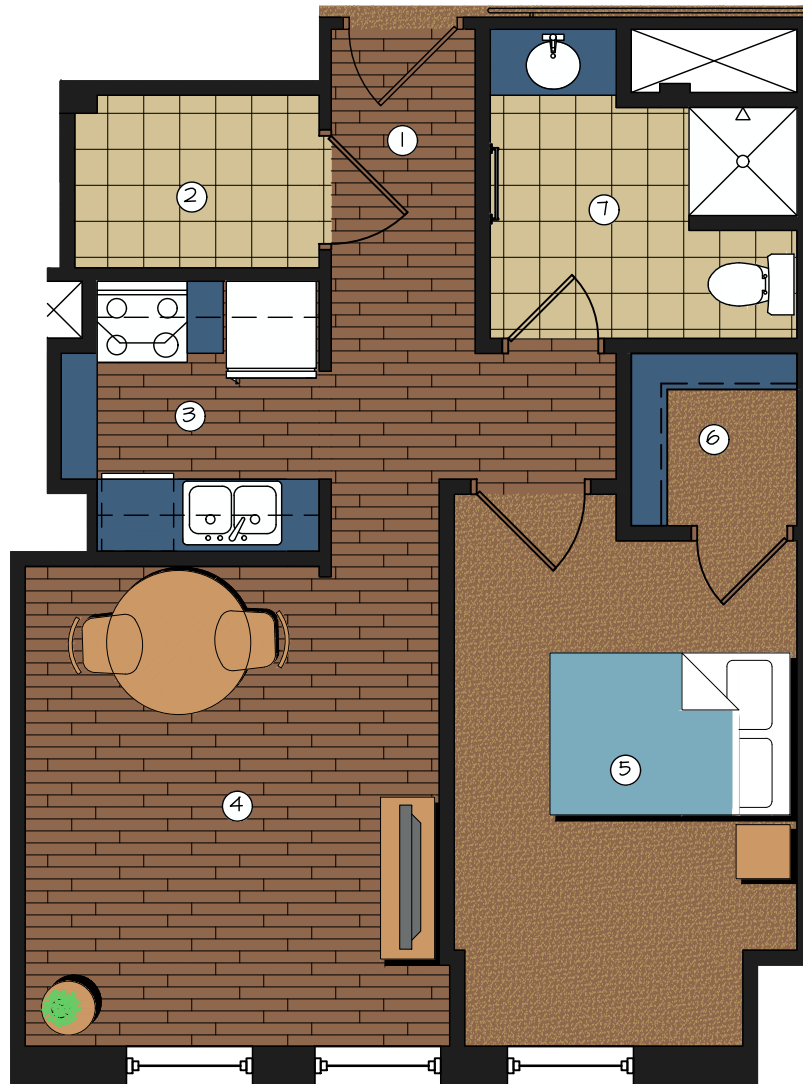
Will Rogers Lofts
 Claremore, Oklahoma
 Unit 302 - 1 BR
 607 sf



- ① HALLWAY
- ② COATS
- ③ KITCHEN - 7'-2" x 7'-6"
- ④ LIVING/DINING - 15'-11" x 13'-4"
- ⑤ BEDROOM - 10'-2" x 14'-1"
- ⑥ CLOSET - 6'-10" x 8'-5"
- ⑦ BATH - 6'-10" x 8'-5"

NOTE: DIMENSIONS MAY VARY FROM UNIT TO UNIT

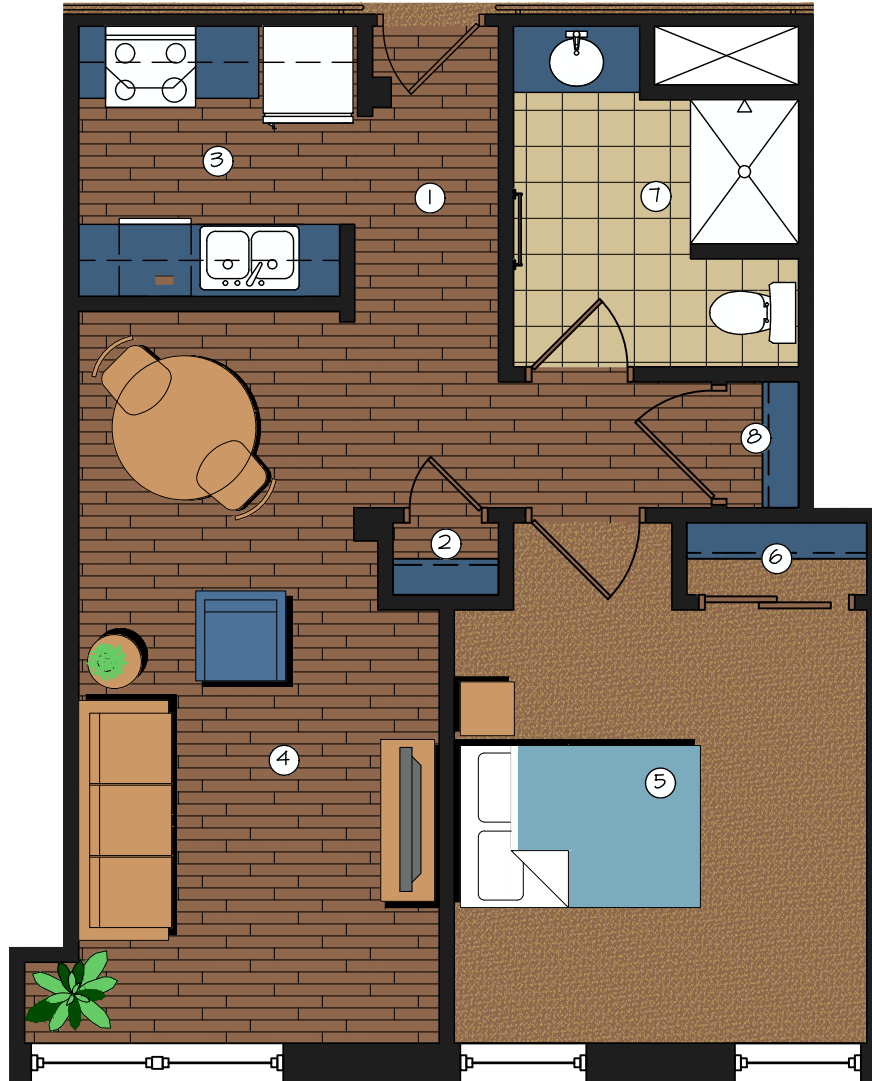
Will Rogers Lofts
 Claremore, Oklahoma
 Unit 303 - 1 BR
 583 sf



- ① HALLWAY
- ② STORAGE
- ③ KITCHEN - 7'-2" x 7'-2"
- ④ LIVING/DINING - 11'-10" x 13'-4"
- ⑤ BEDROOM - 15'-4" x 9'-6"
- ⑥ CLOSET - 4'-9" x 4'-7"
- ⑦ BATH - 8'-6" x 8'-7"

NOTE: DIMENSIONS MAY VARY FROM UNIT TO UNIT

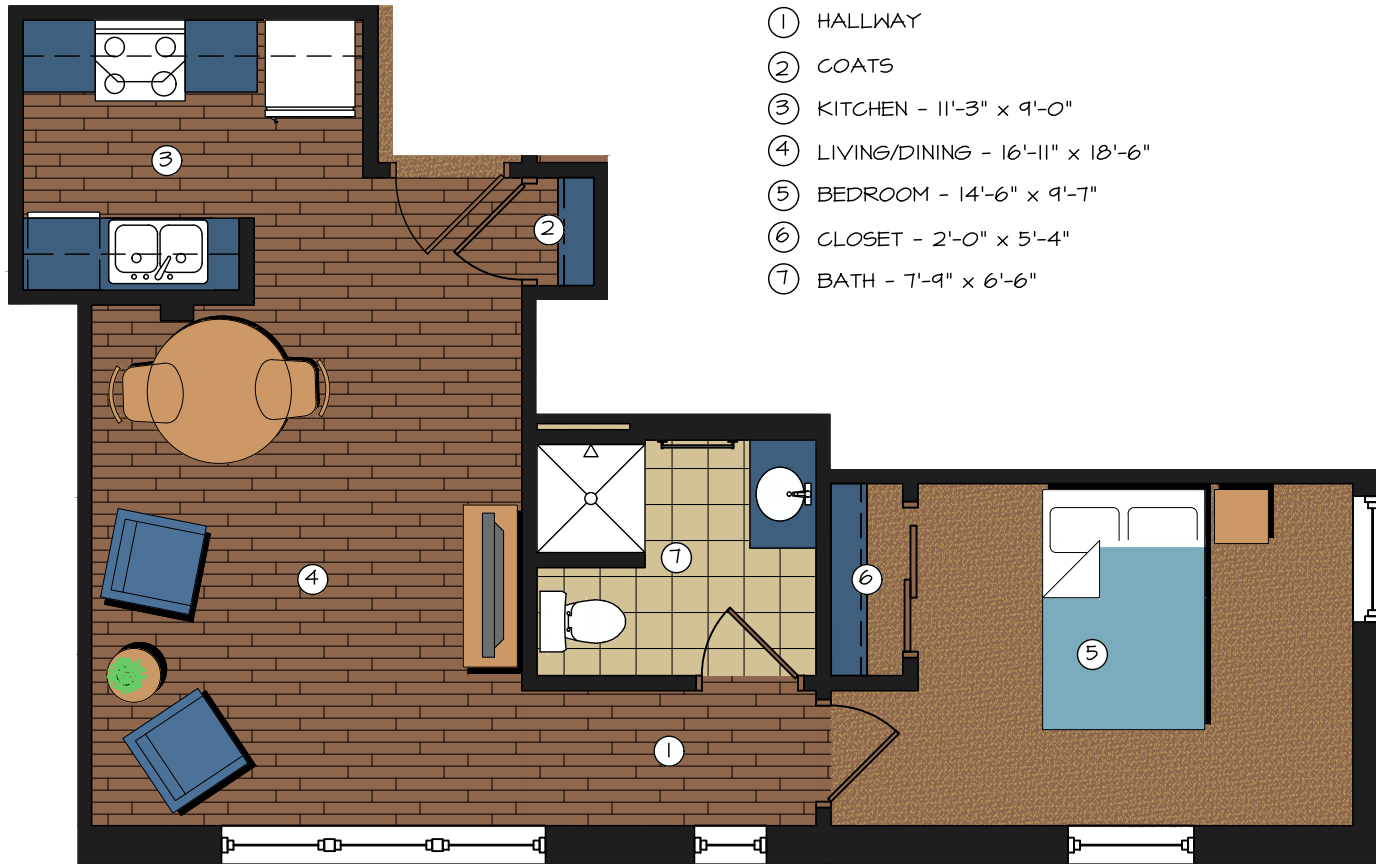
Will Rogers Lofts
 Claremore, Oklahoma
 Unit 304 - 1 BR
 614 sf



- ① HALLWAY
- ② COATS
- ③ KITCHEN - 7'-6" x 7'-9"
- ④ LIVING/DINING - 11'-6" x 20'-4"
- ⑤ BEDROOM - 11'-6" x 14'-5"
- ⑥ CLOSET - 5'-0" x 2'-0"
- ⑦ BATH - 7'-11" x 9'-6"
- ⑧ STORAGE

NOTE: DIMENSIONS MAY VARY FROM UNIT TO UNIT

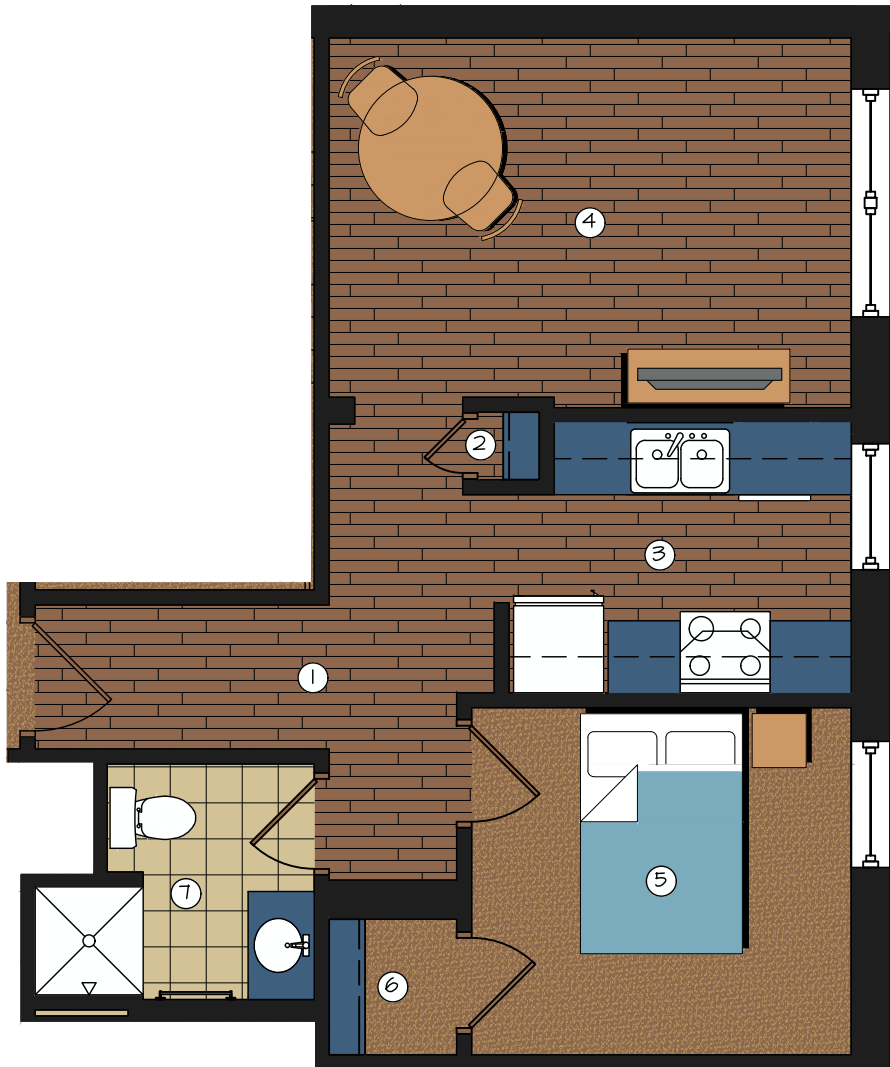
Will Rogers Lofts
 Claremore, Oklahoma
 Unit 305 - 1 BR
 641 sf



- ① HALLWAY
- ② COATS
- ③ KITCHEN - 11'-3" x 9'-0"
- ④ LIVING/DINING - 16'-11" x 18'-6"
- ⑤ BEDROOM - 14'-6" x 9'-7"
- ⑥ CLOSET - 2'-0" x 5'-4"
- ⑦ BATH - 7'-9" x 6'-6"

NOTE: DIMENSIONS MAY VARY FROM UNIT TO UNIT

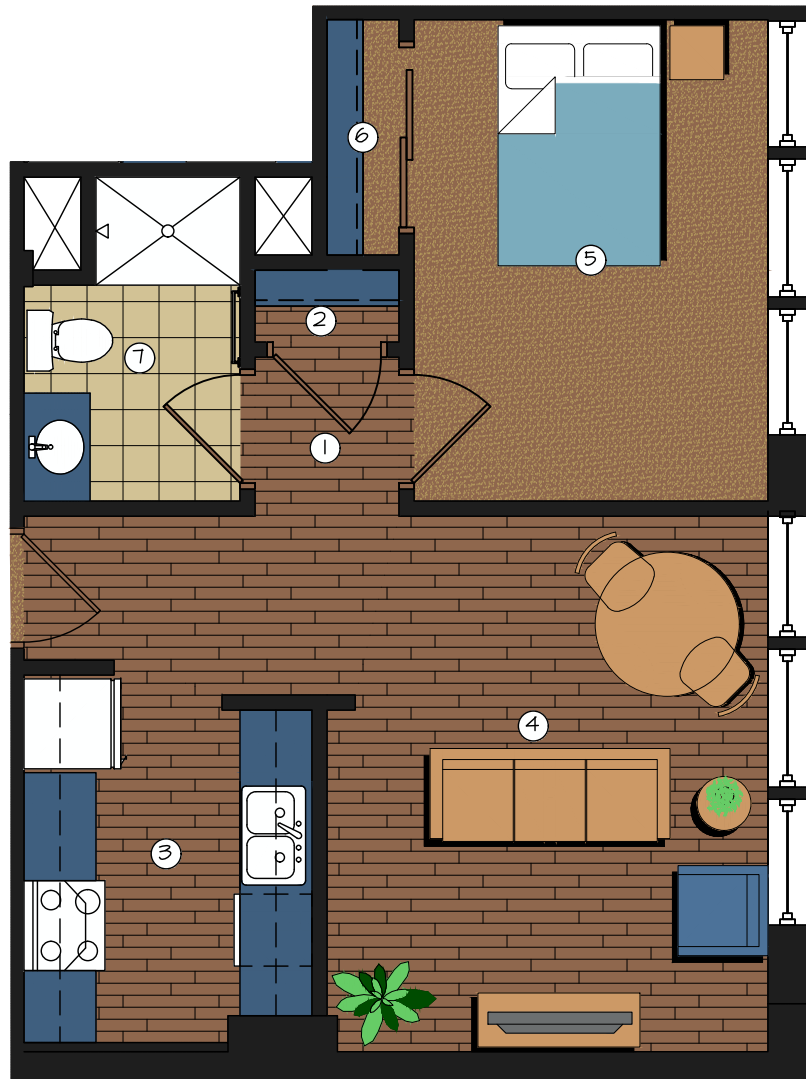
Will Rogers Lofts
 Claremore, Oklahoma
 Unit 306 - 1 BR
 570 sf



- ① HALLWAY
- ② COATS
- ③ KITCHEN - 10'-9" x 7'-6"
- ④ LIVING/DINING - 10'-3" x 14'-6"
- ⑤ BEDROOM - 10'-6" x 9'-8"
- ⑥ CLOSET - 3'-7" x 3'-9"
- ⑦ BATH - 7'-9" x 6'-6"

NOTE: DIMENSIONS MAY VARY FROM UNIT TO UNIT

Will Rogers Lofts
 Claremore, Oklahoma
 Unit 307 - 1 BR
 551 sf



- ① HALLWAY
- ② COATS
- ③ KITCHEN - 8'-0" x 10'-7"
- ④ LIVING/DINING - 12'-3" x 14'-11"
- ⑤ BEDROOM - 9'-10" x 13'-4"
- ⑥ CLOSET - 2'-0" x 6'-6"
- ⑦ BATH - 9'-0" x 6'-0"

NOTE: DIMENSIONS MAY VARY FROM UNIT TO UNIT

Will Rogers Lofts
 Claremore, Oklahoma
 Unit 308 - 1 BR
 611 sf



- ① HALLWAY
- ② COATS
- ③ KITCHEN - 8'-5" x 7'-6"
- ④ LIVING/DINING - 18'-8" x 14'-8"
- ⑤ BEDROOM - 13'-11" x 11'-0"
- ⑥ CLOSET - 6'-7" x 2'-0"
- ⑦ BATH - 9'-0" x 7'-3"

NOTE: DIMENSIONS MAY VARY FROM UNIT TO UNIT

Will Rogers Lofts
 Claremore, Oklahoma
 Unit 309 - 1 BR
 744 sf