

103 FAIRWAY DRIVE - HAMPSTEAD - BELVEDERE PLANTATION

4 BEDROOMS - 3 BATHS - 2353 SQ. FT.



\$425,000

IMAGINE.... Gazing at the manicured grass of the lush 8th green from the six floor to ceiling windows in your spacious Great Room while enjoying your morning coffee.

Think of entertaining your family and friends in the vaulted screened in porch while smelling the fresh cut grass of the fairway.

Consider the fun of relaxing around the warm, flickering glow of your fire pit as the fairway moon rises over on your large patio complete with gas hookup for your grill.

Your nearly 1 acre home site is a rare find -mature hardwood trees, high rolling terrain, privacy and 350 feet of frontage on a wonderful 18 hole golf course. Amazing!

Your new Great Room features an airy 12' vaulted ceiling, gas fireplace, lots of natural light and LVP flooring.

The vaulted Gourmet Kitchen features: a 5 burner gas cooktop, double ovens, exterior vented microwave. It opens to the Great Room, large Dining Area, and Screened Porch with lots of sunlight. The granite topped island is huge and includes a single bowl extra deep chef's sink with Moen pullout faucet in brushed nickel. Recessed LEDS and four pendants lights provide illumination. Build-in bookcases, plant shelves and white maple staggered height cabinets with dove tail drawers and rollout cabinet trays are sought after features as is the generous pantry.

Imagine watching the sun rise over the verdant green of the Belvedere Country Club through the three floor to ceiling windows in your airy, 12' high vaulted Master Suite with plant shelf.

The Master Bath has granite tops, two lavs, a garden tub and a large ceramic tile shower with granite seats and a hand held shower. A generous walk-in closet finishes the suite. Featured within this home are ADA height toilets and extra wide doors.

The first floor also includes a huge bayed bedroom with 4 windows overlooking the green. This room could also be used as a wonderful office, den, or exercise area.

A third vaulted bedroom, guest bath and generous laundry room finish the first floor.

The second floor has a guest suite complete with a full bath. Access to the floored attic storage area is through a full size insulated door.

The oversized garage is fully finished with extra space for your golf cart or motorcycle.

Your new home features 6" walls for energy efficiency, noise reduction and ease on the environment. Even your contented cat will enjoy the 7" window sills.

The home is insulated with special blown-in "Dense Pack" insulation - R-23 walls R-40 ceilings.

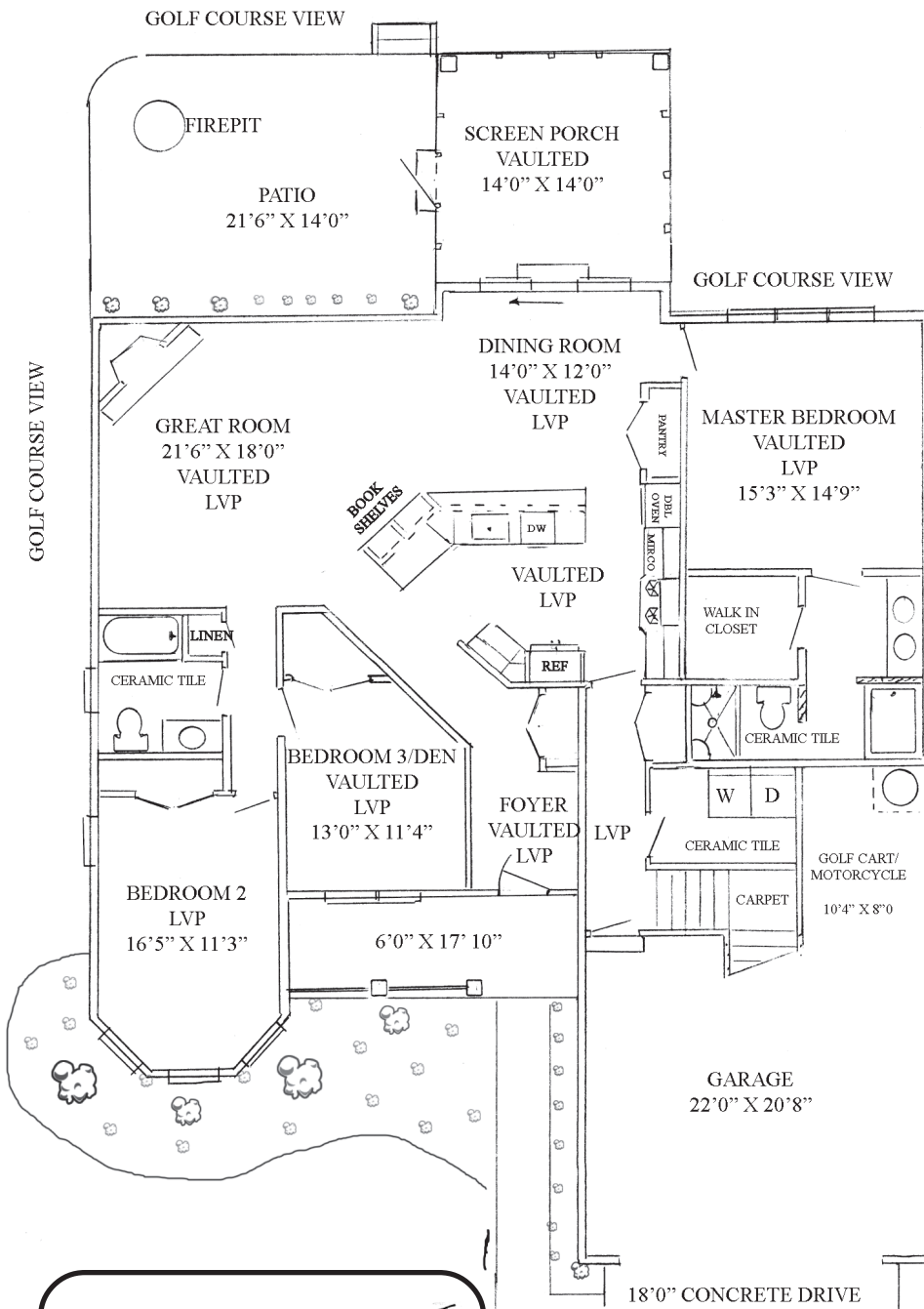
Simplify your life with a new home! Leave worries about a new roof or faulty mechanical systems behind you for many years to come. Enhance your life style, make your move now to this beautiful new home!

Please take the time to visit the extraordinary home. Estimated completion in early December.

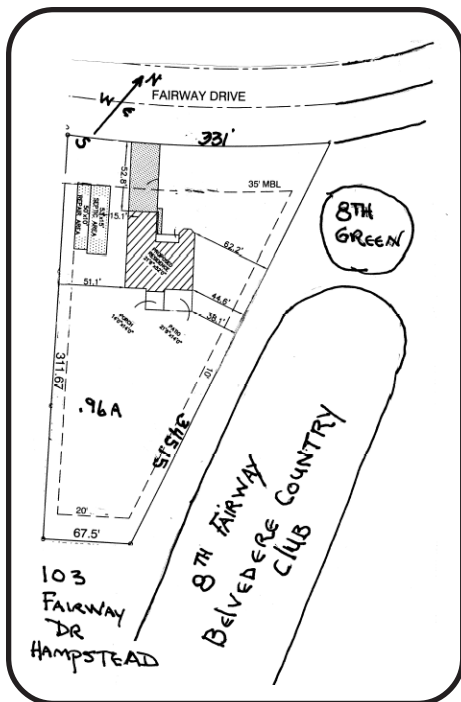
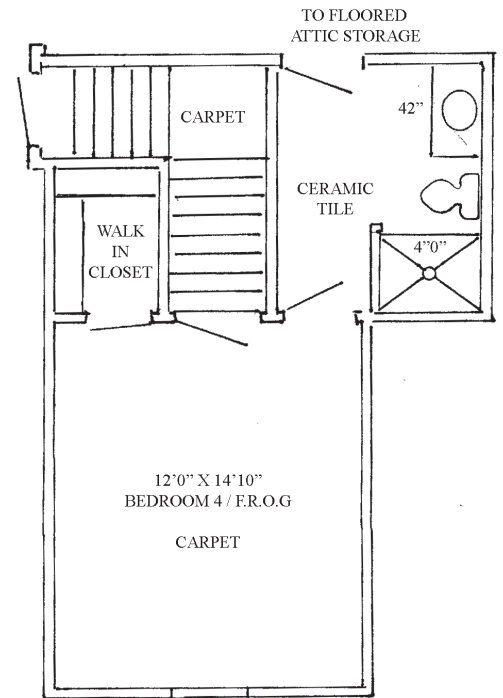
Please visit our website at www.SuburbanHomesofNC.com



103 FAIRWAY DRIVE



- 2,353 Square Feet of Living Space
- 2 x 6 Walls with Spray-In Insulation
- 14 x 14 Vaulted Screen Porch
- 1 (.96) acre Golf Course Lot
- 4 Bedrooms / 3 Baths
- High Volume Vaulted Ceilings
- Open Floor Plan
- Floor to Ceilings Windows
- Very Low Maintenance Exterior
- Lots of Privacy



Belvedere Plantation Country Club
(18 Holes) Hampstead NC

- Community water by Carolina Water
- Minimal HOA — \$ 35 per year
- Excellent Topsail Schools

Only minutes to:

- 31 minutes Wilmington Airport
- 18 minutes Ogden shopping and dining
- 34 minutes Wilmington Downtown
- 17 minutes Surf City Beaches
- 27 minutes Stone Bay/Camp Lejeune

See our website for photos and plans



Leo J. Urban
(910) 471-1696

www.SuburbanHomesofNC.com

LeoJUrban@gmail.com