

## ROOF CHAFFED WIRES

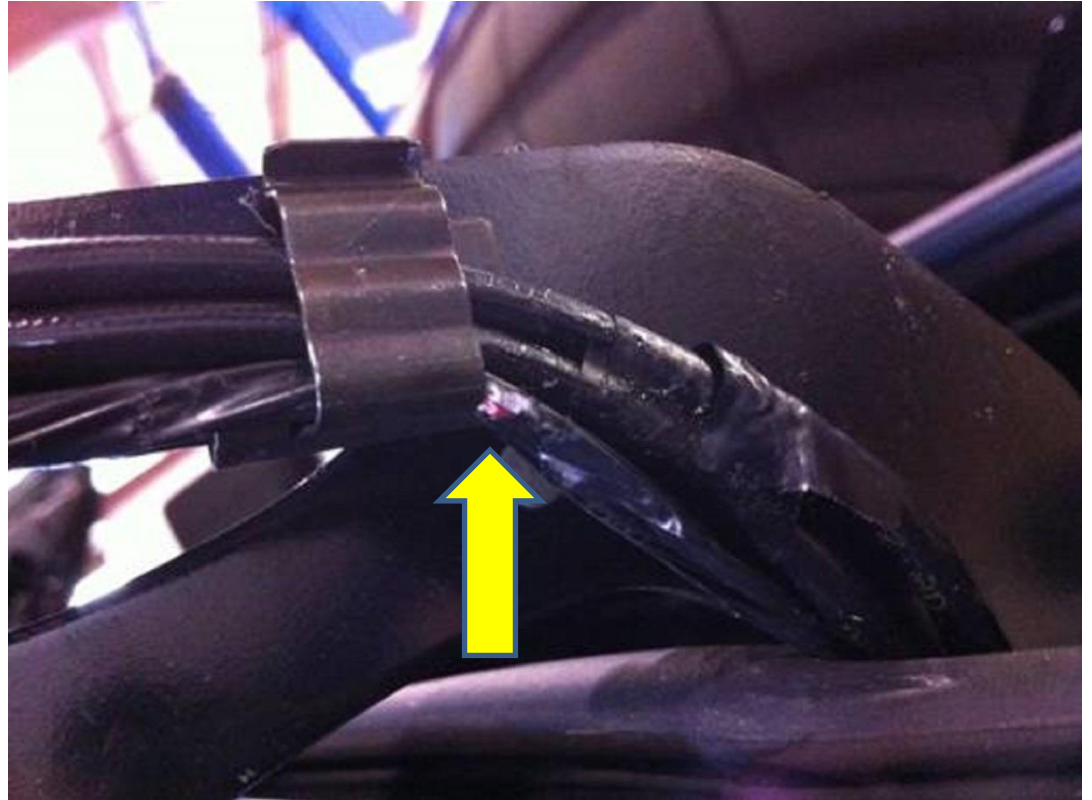
by Dicktator

**Wires on Roof Cover arm to tight.**

**Causes wire to chaff from open/close cycle.**

**Roof will not work.**

**Wire insulation cut.**

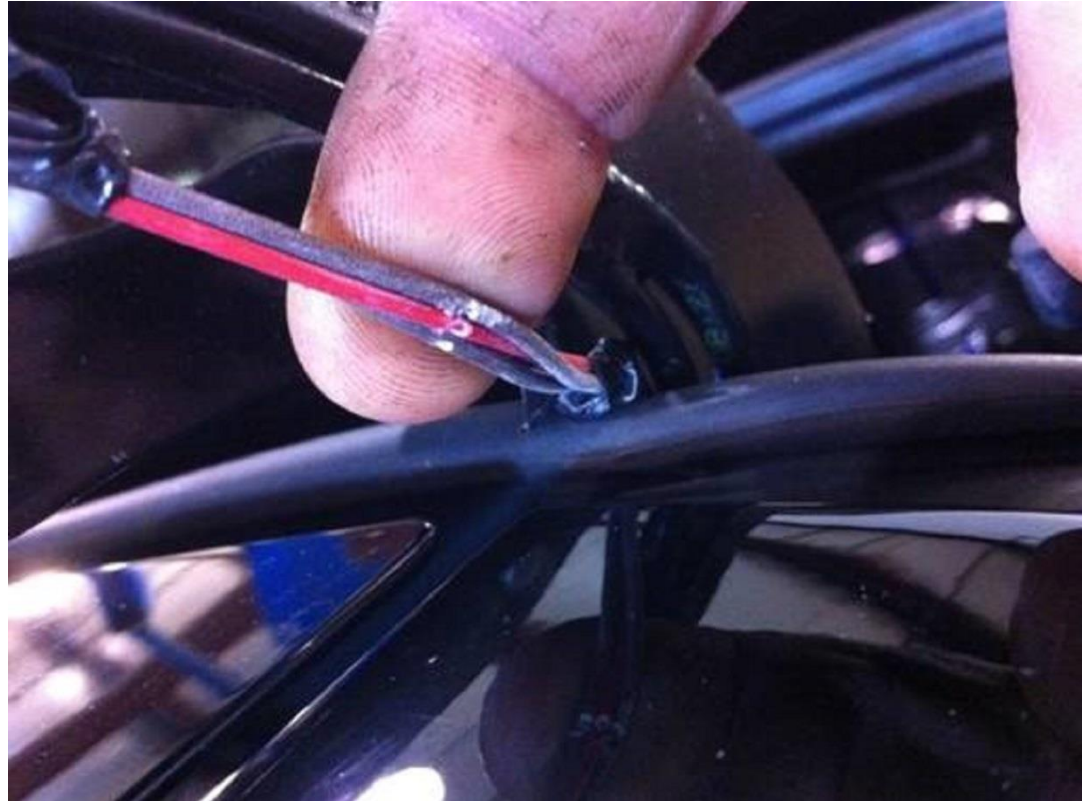


## ROOF CHAFFED WIRES

### DAMAGED WIRE INSULATION

**Remove wire from clip to  
expose damage.**

**Wire touches metal clip,  
shorts circuit.**



## ROOF CHAFFED WIRES

**Factory Wire install.**

**Remove Wire from clips.**

**Notice damage on wire from movement.**



## ROOF CHAFFED WIRES

**Remove wire from clips.**

**Wrap damaged wire with tape or suitable insulation.**

**Each wire must be taped separately.**



## ROOF CHAFFED WIRES

**Repair, install in clips.**

**Wrap wire area before  
sliding into clips for  
additional protection.**



## ROOF CHAFFED WIRES

**Roof Cable at bottom of  
Roof Compartment.**

**Rubbing against roof while  
driving.**

**Cut insulation.**



## ROOF CHAFFED WIRES

**Chaffed until almost broke.**

**Take off damaged insulation, tape, solder or reconnect damaged wires.**

**Tape each wire and re-tape wire harness.**

