

4,400 sq.ft.

12256 Universal Dr, Taylor, MI 48180



Listing ID: 30347699
 Status: Active
 Property Type: Industrial For Lease
 Industrial Type: Industrial-Business Park, Light Industrial
 Contiguous Space: 4,400 SF
 Total Available: 4,400 SF
 Lease Rate:
 Lease Type: Modified Gross
 Ceiling: 18 - 20 ft.
 Office SF: 1,100 SF
 Drive-In Bays: 1 Bay



Overview/Comments

4,400 sq.ft. of light industrial for lease in the heart of Metro -Telegraph Industrial Park. Mezzanine storage over office. Call Rea Construction at 734 946-8730 for a tour.

QR Code

Scan this image with your mobile device:



General Information

Tax ID/APN:	263960770	Gross Building Area:	36,250 SF
Industrial Type:	Industrial-Business Park, Light Industrial, Warehouse/Distribution	Building/Unit Size (RSF):	4,400 SF
Zoning:	LIGHT INDUSTRIAL	Usable Size (USF):	4,400 SF
Building Name:	Universal Trade Center 3	Land Area:	2 - 3 Acres

Available Space

Suite/Unit Number:	12256	Offices:	4
Space Available:	4,400 SF	Office SF:	1,100 SF
Minimum Divisible:	4,400 SF	Kitchen/Breakroom:	Yes
Maximum Contiguous:	4,400 SF	Parking Spaces:	8
Space Type:	Relet	Loading Docks:	0
Date Available:	12/01/2018	Loading Doors:	0
Lease Rate:		Drive In Bays:	1
Lease Type:	Modified Gross	Ceiling Height:	20
Rent Escalators:	Fixed Lease	Clear Height:	18
Conference Rooms:	1		

Area & Location

Property Located Between: Telegraph and Beech Daly
 Highway Access: I94
 Airports: Detroit Metropolitan

Building Related

Tenancy:	Multiple Tenants	Roof Type:	Flat
Total Number of Buildings:	2	Construction/Siding:	Block
Number of Stories:	1	Parking Ratio:	1.4 (per 1000 SF)
Office Space SF:	1,100 SF	Parking Type:	Surface
Property Condition:	Good	Total Parking Spaces:	8
Year Built:	1988	Column Spacing:	40
Year Renovated:	2014	Passenger Elevators:	0

Freight Elevators: 0
Sprinklers: None
Amps: 200
Volts: 220
X-Phase: 3

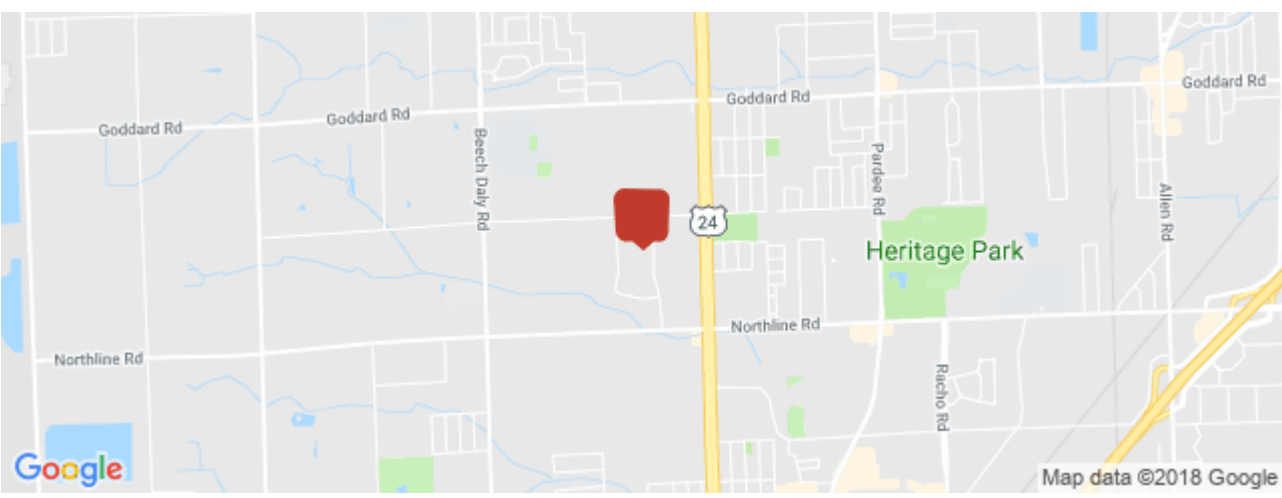
Heat Type: Natural Gas
Heat Source: Radiant
Lighting: Other
Internet Access: Cable

Land Related

Water Service: Municipal
Sewer Type: Municipal

Location

Address: 12256 Universal Dr, Taylor, MI 48180
County: Wayne
MSA: Detroit-Warren-Dearborn
Submarket: Airport District



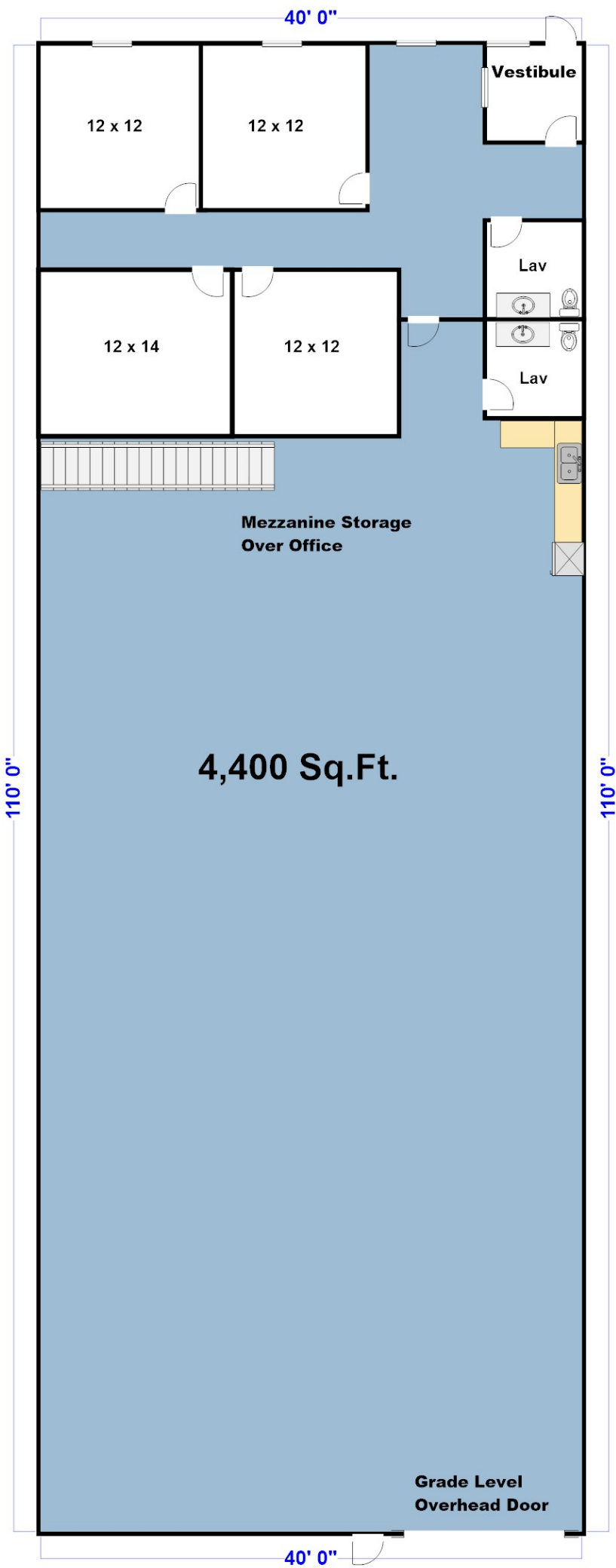
Property Images



IMG_2560



12254 Universal



Property Contacts



Yvon Rea

Rea Construction
248-217-0482 [M]
734-946-8730 [O]
darren@reaconstruction.net