

# Spotted Lanternfly Biosecurity

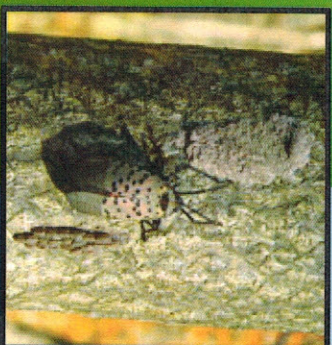


**pennsylvania**  
DEPARTMENT OF AGRICULTURE

Autumn



Adults: July 24-December



Egg Laying:

September - November



Eggs: Late September-June

Winter

## Life Cycle

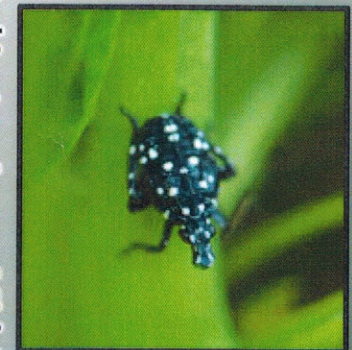
### One Generation Per Year



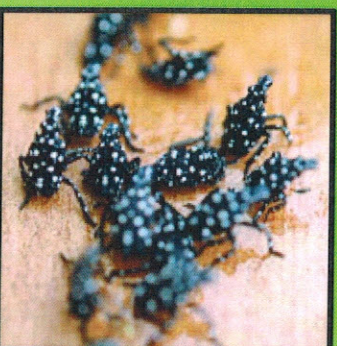
Fourth Instar:  
July - September



Hatch and 1st Instar:  
Late April- June



Third Instar: June - Mid-July



Second Instar: May - June

Summer

Spring