

2021 BASEBALL





NJSIAA REGULATIONS AND POLICIES

- Jewelry (Medical Reasons must be approved by NJSIAA)
- Social Media.
- Adult Coaches must wear proper head protection in coaching box.
- Umpires wearing sunglasses.
- Players wearing sunglasses.
- Eye Black.
- Extending dugout / bench area.
- Lightning Detectors





NJSIAA GAME ENDING PROCEDURES NEW FOR 2021

1. A **complete game** consists of seven complete innings. Exceptions to this are:
 - The game requires extra innings because of a tie score after 7 complete innings
 - The game was shortened because the home team needs none of its half of the seventh inning or only a fraction of it.
 - The 10-run rule. The visiting team is behind 10 or more runs after 4 1/2 innings, or after the fifth inning, if either team is 10 runs behind and both teams have had an equal number of times at bat.
2. An **official game** is a game that has reached 5 complete innings. Exceptions to this are:
 - The away team has had 5 complete innings at bat and is behind in the score.
 - The score is tied after 5 complete innings.
 - Games playing under the suspended game rule will supersede this rule. Please see suspended game regulations below.





REGULAR SEASON

3. A complete game that is tied and in extra innings and called for weather, field conditions or darkness will be considered final. The final score will follow the procedure below:
 - The final score will be reflected from the last completed inning, which includes ties.
 - CL1: If the game is tied at the completion of the 10th inning and the away team goes ahead in the top of the 11th inning and the game is called. The score will revert to the last completed inning thus conclude as a tie.
 - CL2: If the game is tied at the completion of the 10th inning and the home team goes ahead in the bottom of the 11th inning, the game will end.
4. Any official game that is called for weather, field conditions or darkness will be considered final. The final score will follow the procedure below:
 - The final score will be reflected from the last completed inning (5th inning minimum) which includes ties; except that if the home team in its half of the incomplete inning, scores a run (or runs) which equals or exceeds the opponent's score, the final score shall be as recorded when the game is called.





REGULAR SEASON

CONTINUED

- CL1: If the game is tied at the completion of the 5th inning and the away team goes ahead in the top of the 6th inning and game is called. The score will revert to the last completed inning (5th) and will remain a tie.
 - CL2: If the game is tied at the completion of the 5th inning and the home team ties or goes ahead in the bottom of the 6th inning and game is called. The final score shall be as recorded when the game is called.
5. If a game is called before it becomes official because for weather, field conditions or darkness, the umpire shall declare the contest “no game”. It will be up to the two schools to determine if the game will be replayed. Except if the game is played under the suspended game rule (See rule below).
 6. All games shall end when the visiting team is behind 10 or more runs after 4 1/2 innings, or after the fifth inning, if either team is 10 runs behind and both teams have had an equal number of times at bat (10-run rule).





STATE TOURNAMENT (COUNTY AND CONFERENCE TOURNAMENTS)

1. All NJSIAA State tournament games will be played under the suspended game rule.
2. All conference, league, & county tournament play will also play under the suspended game rule when a winner is needed to advance or crown a champion.
3. The suspended game rule will also be in play for any regular season conference, League, or county play that needs to have a winner to determine a conference, league, county or division champion.
 - NOTE 1: The regular season game opponents must be in the same conference or league.
 - NOTE 2: Any regular season tournament that requires a winner to advance may also use the suspended game rule if applicable.
4. All games will end when the visiting team is behind 10 or more runs after 4 1/2 innings, or after the fifth inning, if either team is 10 runs behind and both teams have had an equal number of times at bat (10-run rule)





STATE TOURNAMENT (COUNTY AND CONFERENCE TOURNAMENTS)

5. If a game is called before it becomes a completed game because of weather, field conditions or darkness, the umpire shall declare the contest a “suspended game”. There are no official games when the contest is played under the suspended game rule. The game must be played to completion.
6. A game that is suspended at any time shall be picked up at the point of interruption the next day. If the next day is a Sunday, the game may be played if both schools are permitted to play on Sundays, otherwise, the game must be played on Monday. Local conference, league, or county rules may supersede this rule with the exception of the state tournament.
7. All pitch count rules remain in effect regardless of the number of pitches or days in between the suspended game (except the state tournament)





STATE TOURNAMENT

(COUNTY AND CONFERENCE
TOURNAMENTS)

- In an NJSIAA State Tournament a game that is suspended and resumed the next day, the pitcher of record may continue to pitch to the extent of his eligibility provided he has pitched 50 or fewer pitches.
- If the pitcher has thrown 50 or fewer pitches before the game was suspended, that pitcher's count shall carry over to the next day and the pitcher may pitch until the maximum of 110 pitches in a game is reached.
- If the pitcher has thrown more than 50 pitches before the game was suspended, that pitcher shall be required to meet the rest period as per pitch count rule limits.





UMPIRE DRESS CODE

- During the regular season, umpires may wear the navy blue or black shirt with NJSIAA logo.
- Note: Chapters may dictate which color they want their umpires wearing during the regular season. If umpires cannot agree on the uniform color, then the default color will be the navy-blue.



NJSIAA APPROVED SHIRTS



Starting with the 2022 season, all shirts (short sleeve or long sleeve) must have the sublimated approved NJSIAA logo on them.



NJSIAA APPROVED JACKETS



Starting with the 2022 season, all umpires may wear either the plain Jacket (no logo) or the jacket with the approved NJSIAA logo. In addition, the approved logo maybe embroidered on a jacket for those umpires that already have a plain jacket and wish to have it embroidered on. The NJSIAA will not require umpires to wear the jacket with the NJSIAA logo at any time, however, our approved vendor will no longer sell the plain jacket to NJSIAA registered officials. Only the jacket with the approved NJSIAA logo will be sold.





HATS

2021 Regular Season Games

Any of the three hats listed below will be acceptable for all regular season games. Umpires do not need to have matching hats.

- NJSIAA approved logo hat
- Chapter Hat
- Blank Hat





HATS

2022 Regular Season Games

Any of the two hats listed below will be acceptable for all regular season games. Umpires do not need to have matching hats.

- **NJSIAA approved logo hat**
- **Chapter Hat**





2021 STATE TOURNAMENT

During the NJSIAA tournament, either uniform combination is fine. During the state tournament all umpires must match in color for all parts of the uniform. **If umpires cannot agree on the uniform color, then the default color will be the navy-blue.**

Any of the two hats listed below will be acceptable for all NJSIAA tournament. Umpires do not need to have matching hats.

- **NJSIAA Approved Logo Hat**
- **Blank Hat**





2022 STATE TOURNAMENT

During the NJSIAA tournament, either uniform combination is fine. During the state tournament all umpires must match in color for all parts of the uniform. **If umpires cannot agree on the uniform color, then the default color will be the navy-blue.**

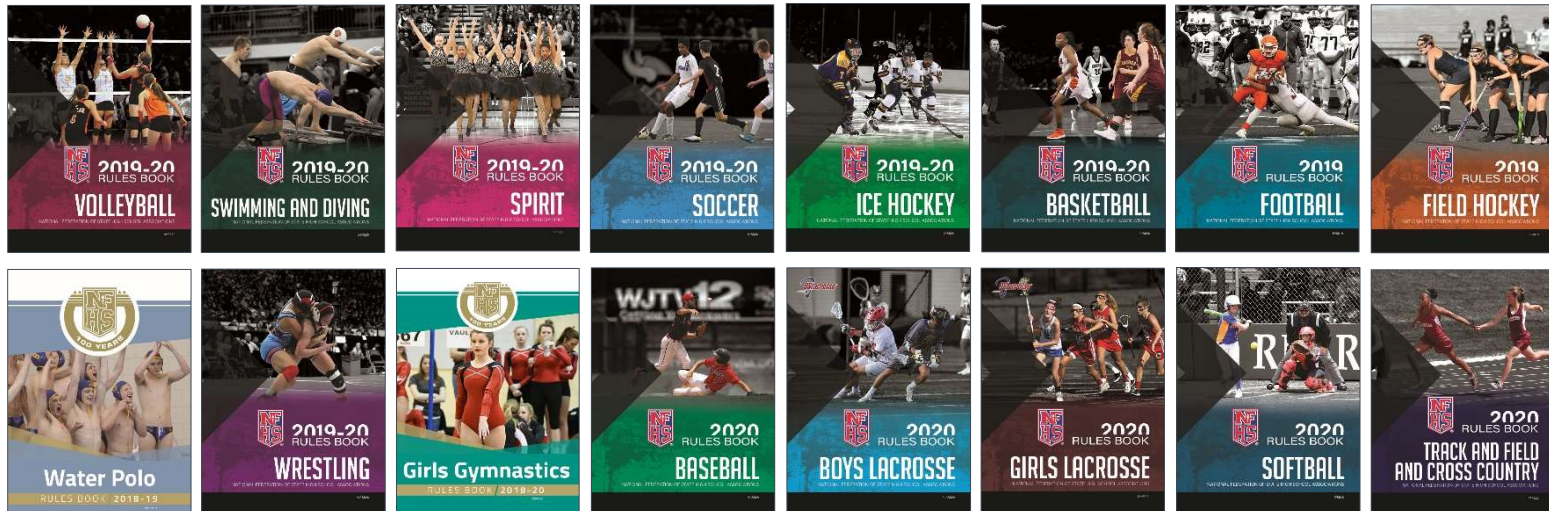
Only the hat listed below will be acceptable for all state tournament games.
Umpires must wear:

➤ **NJSIAA Approved Logo Hat**



NATIONAL FEDERATION OF STATE HIGH SCHOOL ASSOCIATIONS

- The NFHS writes playing rules for 17 sports for boys and girls at the high school level.
 - Publishes 4 million pieces of materials annually.



NFHS RULES BOOK AS E-BOOKS

National Federation of State High School Associations



GET NFHS RULES ON YOUR MOBILE DEVICE

Have you been without your printed rules book and needed to find an obscure rule quickly, make a note or highlight a rule?

E-books Features:

- Searchable
- Highlight Areas of Interest
- Make Notes
- Easy Navigation
- Adjustable Viewing Size
- Immediate Availability



www.nfhs.org/ebooks

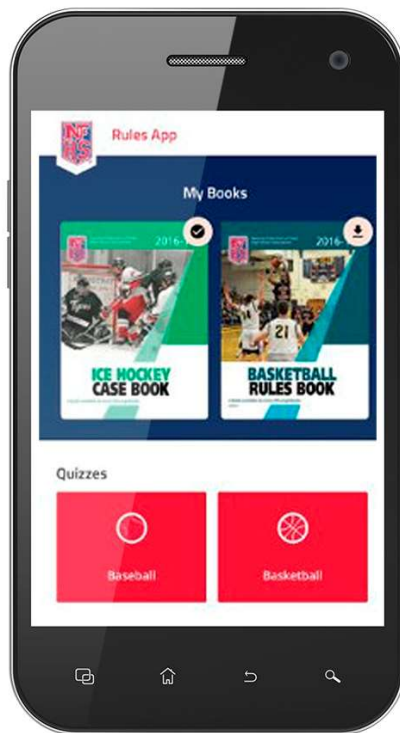
NFHS Rules and Case e-books for \$6.99 each

Download from iTunes or Amazon

- E-books features:
 - Searchable
 - Highlight areas of interest
 - Make notes
 - Easy navigation
 - Adjustable viewing size
 - Immediate availability



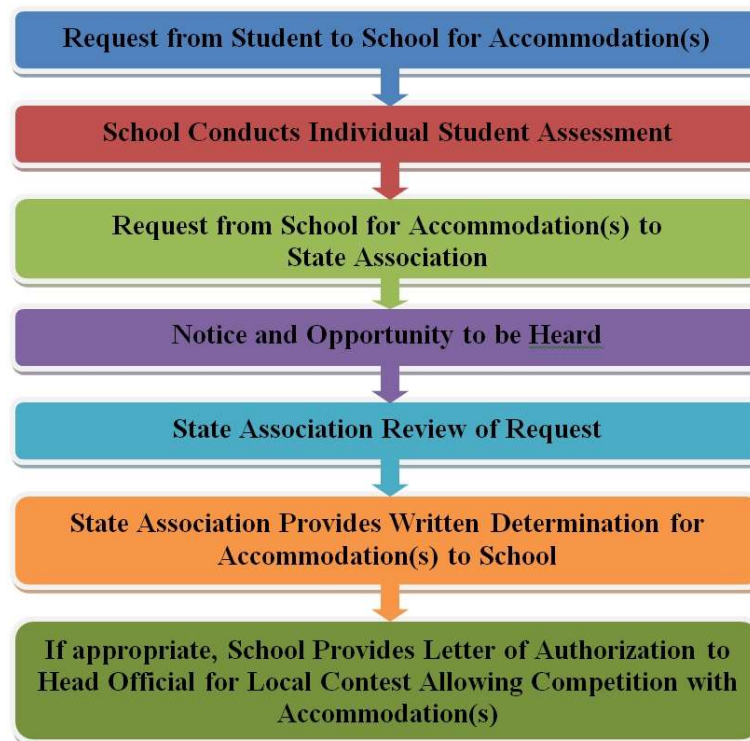
NEW NFHS RULES APP



- Rules App features:
 - Searchable
 - Highlight notes
 - Bookmarks
 - Quizzes for all sports
 - Easy navigation
 - Immediate availability
 - Free to paid members of the NFHS Coaches and Officials Associations
 - www.nfhs.org/erules for more information



GUIDELINES FOR SCHOOLS AND STATE ASSOCIATIONS FOR CONSIDERATION OF ACCOMMODATIONS



UMPIRE MECHANICS



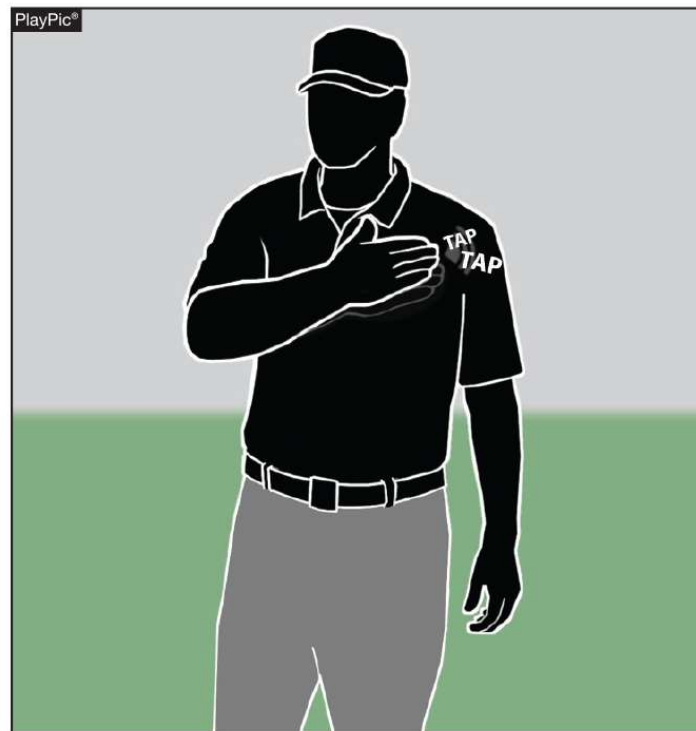
**Jack
Venezia**

NJSIAA Mechanics
Chairperson



NFHS UMPIRE SIGNAL

The approved signal for communicating with a partner(s) that an umpire has some relevant information that may help in making a decision is to tap the left chest in the heart area.



CORRECTING A DECISION



The UIC may rectify any decision in which a reversal places another team at a disadvantage.

The UIC has the authority to make a final decision on a point not covered by the rules.



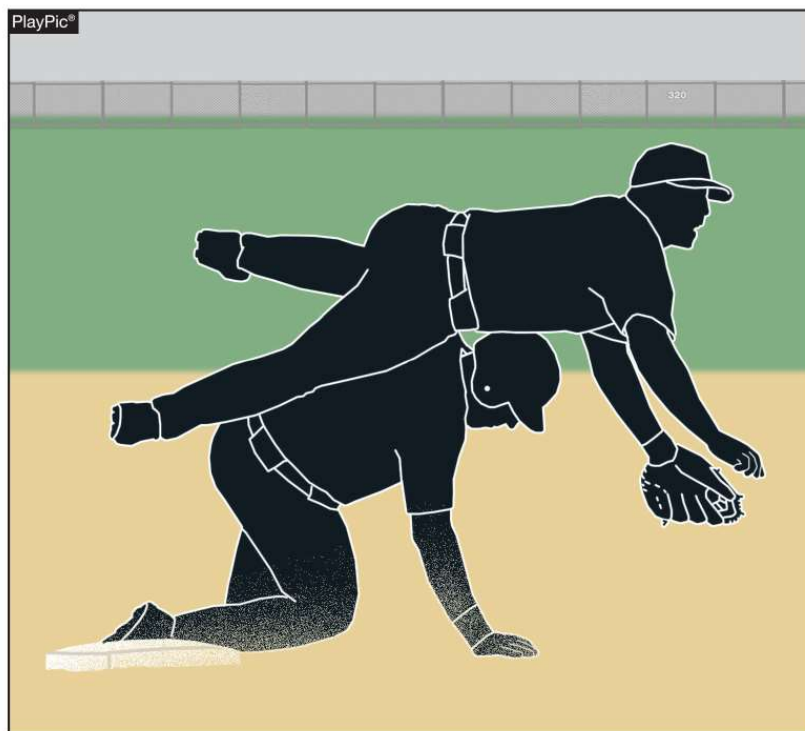
CHECK SWING



On a half-swing Base Umpire shall respond only if the Plate Umpire asks.

In 3-Man Mechanics, PU should appeal to U1 on right handed batters and U2 on left handed batters, even if they are in Position B or C.

FORCE PLAY SLIDES



With a runner at 1st base only, the Plate Umpire should be prepared to assist the base umpire on illegal slides at 2nd base in a double play situation where U1 must direct his attention to the play at first base.

NFHS Umpire Manual Page 28, #4

EJECTION, RESTRICTION TO BENCH

For contentious situations involving the head coach, Umpires have the option to restrict rather than eject.

Whenever an assistant coach is restricted or ejected, The head coach must also be restricted to the bench.



NFHS Umpire Manual Page 33, #13

FLY BALL COVERAGE

Base Umpire(s) in a 2-man or 3-man crew shall use the Pause-Read-and-react technique to determine whether a batted ball to the outfield is a “trouble ball” which requires a base umpire to “go out” to the outfield or whether it is a routine fly ball or clean base hit which does not require an umpire to leave the infield.





2021 NFHS BASEBALL RULE UPDATES



DESIGNATED HITTER

NATIONAL FEDERATION OF STATE HIGH SCHOOL ASSOCIATIONS Official Line-up Baseball				
DATE <u>May 7, 20</u>		TEAM <u>Union Eagles</u>		
NO.	SUB.	PLAYER	RE	POS.
14	1	Abel		7
9	2	Baker		4
12	3	Charles		8
44	4	Daniels		3
32	5	Edwards		6
17	6	Franklin		2
24	7	George		9
2	8	Hamilton		5
19	9	Irwin		1
10				
6		Jack		

There are now two options when using a designated hitter: the standard DH and the player/DH. Teams may also still choose to start the game without using a designated hitter (straight 9). All options must be declared prior to the start of the game.

DESIGNATED HITTER RULE 3-1-4

44	4	Daniels		8
	SUB.			DH
32	5	Edwards		6
	SUB.			
17	6	Franklin		2
	SUB.			
24	7	George		9
	SUB.			
2	8	Hamilton		5
	SUB.			
19	9	Irwin		1
	SUB.			
6	10	Jackson		3
	SUB.			
SUBSTITUTES				
11		Knutson		POS.
28		Larson		
35		Matthewson		
1		Nelson		

The DH may still be a 10th starter hitting for any one of the nine starting defensive players.

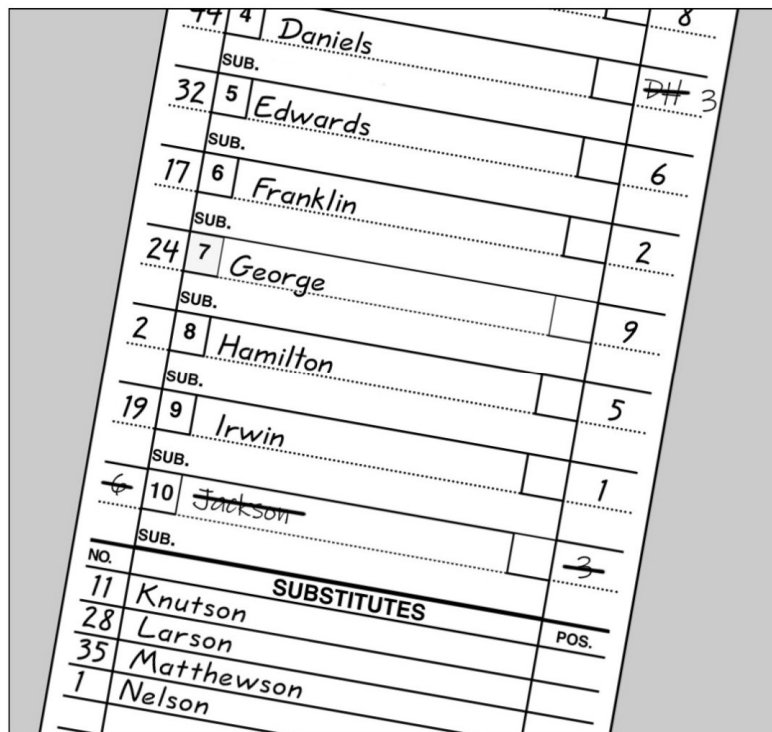
DESIGNATED HITTER RULE 3-1-4a1

44	4	Daniels	8
6	SUB.	Jackson	
32	5	Edwards	DH
	SUB.		3
17	6	Franklin	6
	SUB.		
24	7	George	2
	SUB.		
2	8	Hamilton	9
	SUB.		
19	9	Irwin	5
	SUB.		
6	10	Jackson	1
	SUB.		
			3
SUBSTITUTES			
11		Knutson	POS.
28		Larson	
35		Matthewson	
1		Nelson	

- When using a standard designated hitter, the role of the DH is still terminated for the remainder of the game when the defensive player for whom the DH batted, subsequently bats, pinch-hits or pinch-runs.

Rule Change

DESIGNATED HITTER RULE 3-1-4a2



NO.	SUB.	NAME	POS.
4		Daniels	
32		Edwards	DH 3
17		Franklin	6
24		George	2
2		Hamilton	9
19		Irwin	5
10		Jackson	1
SUBSTITUTES			
11		Knutson	
28		Larson	
35		Matthewson	
1		Nelson	

- The role of a standard DH is still terminated for the remainder of the game when the designated hitter or any previous designated hitter assumes a defensive position.



DESIGNATED HITTER RULE 3-1-4b

NFHS NATIONAL FEDERATION OF
STATE HIGH SCHOOL ASSOCIATIONS
Official Line-up
Baseball

DATE May 7, 20 TEAM Union Eagles

NO.	PLAYER	RE	POS.
14 1	Abel		7
SUB.			
9 2	Baker		4
SUB.			
12 3	Charles		8
SUB.			
44 4	Daniels		3/DH
SUB.			
32 5	Edwards		6
SUB.			
17 6	Franklin		2
SUB.			
24 7			

- The starting designated hitter (DH) may now be any one of the starting defensive players, including the pitcher.
- A Player/DH then holds two positions: defensive player and designated hitter.

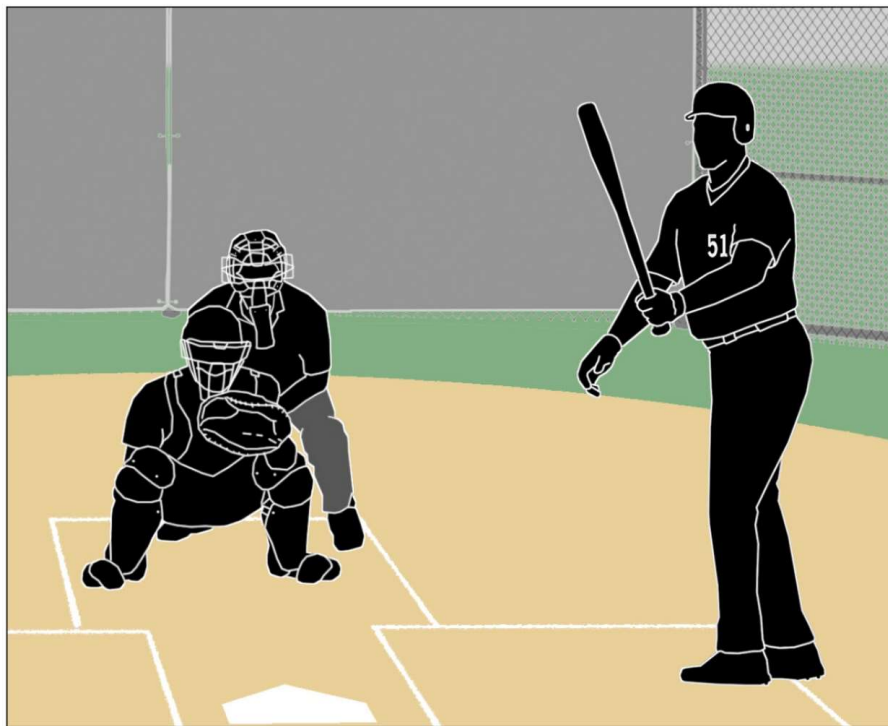
DESIGNATED HITTER RULE 3-1-4b

SUB.	44	4	Daniels	8
SUB.	32	5	Jackson Edwards	3/DH 3
SUB.	17	6	Franklin	6
SUB.	24	7	George	2
SUB.	2	8	Hamilton	9
SUB.	19	9	Irwin	5
SUB.	10			1
SUBSTITUTES				
NO.	6		Jackson	POS.
	11		Knutson	
	28		Larson	
	35		M...	

- In the case where one player is listed as a starting DH and a starting defensive player in the lineup, the role of the defensive player may be substituted for by any legal substitute.
- The original player/DH may re-enter defensively one time.



DESIGNATED HITTER RULE 3-1-4b-1



When using the P/DH, the role of the DH is terminated for the remainder of the game when any player substitutes offensively for the DH.

DESIGNATED HITTER RULE 3-1-4b-2



As a reminder from the previous rule, the role of the DH is terminated for the remainder of the game when the starting defensive Player/DH is substituted for either as a hitter or a runner.



DESIGNATED HITTER (DH) RULE 3-1-4

- **ART. 4 . . .** A hitter may be (not mandatory) designated for any one starting player (not just pitchers) and all subsequent substitutes for that player in the game. ~~A starting defensive player cannot be listed as the designated hitter in the startup.~~ A designated hitter for said player shall be selected prior to the start of the game, and his name shall be included on the lineup cards presented to the umpire-in-chief and to the official scorer.





DESIGNATED HITTER (DH) RULE 3-1-4

- A team forfeits the use of a designated hitter if it fails to declare a designated hitter prior to the game. If a pinch hitter or pinch runner for the designated hitter is used, that player becomes the new designated hitter. The player who was the designated hitter may re-enter as the designated hitter under the re-entry rule. A designated hitter and the player for whom he is batting are locked into the batting order. No multiple substitutions may be made that will alter the batting rotation.





DESIGNATED HITTER (DH) RULE 3-1-4

- ~~The role of the designated hitter is terminated for the remainder of the game when:~~ A designated hitter may be used in one of the two scenarios:
- ~~a. The defensive player, or any previous defensive player for whom the designated hitter batted, subsequently bats, pinch-hits, or pinch-runs for the designated hitter; or~~
- a. The designated hitter may be a tenth starter hitting for any one of the nine starting defensive players. If the designated hitter (DH) is used in this manner, the role of the DH is terminated for the remainder of the game when:





DESIGNATED HITTER (DH) RULE 3-1-4

- 1. The defensive player, or any previous defensive player for whom the designated hitter batted, subsequently bats, pinch-hits, or pinch-runs for the designated hitter; or
- 2. The designated hitter or any previous designated hitter assumes a defensive position.





DESIGNATED HITTER (DH) RULE 3-1-4

- **Rationale:**

This rule change will provide coaches some options to strategize how to keep their better players in the game, to contribute to the offensive output of the team and give another player a chance to participate on defense. In addition, considering the pitch count rules, this change would help pitchers to keep their bat (because they are typically the best hitter) in the game, but can come out of the game to protect their arms from overuse.





POINTS OF EMPHASIS



DESIGNATED HITTER



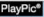
The courtesy runner (CR) can never have any function with a designated hitter (DH). When a DH comes to bat, he is a DH (regardless of either lineup option); when at bat, he can never assume a defensive position. As a result, a CR is never a legal substitute for a DH.

DESIGNATED HITTER



If the DH is batting for another player, when he bats, he is a DH. As a result, if a runner comes in for him when he gets on base, it is a substitution, and that player is now the DH. If the DH is a Player/DH, he is batting as the DH. A substitution by an offensive player would eliminate the role of the DH.

GAME-ENDING PROCEDURES



	1	2	3	4	5	6	7	Total
VISITOR	3	2	4	1	4			14
HOME	1	0	0	0	0			1

A state association may adopt game-ending procedures that determine how games are ended, including suspended games. However, if a state does not adopt game-ending procedures, by mutual agreement of the opposing coaches and the umpire-in-chief, any remaining play may be shortened or the game terminated. **If a state association has adopted game-ending procedures, only those game-ending procedures may be used, unless the opposing coaches wish to terminate the game (4-2-4).**





NJSIAA CONSTITUTION DOES NOT ALLOW FOR THIS GAME ENDING PROCEDURE.

- Coaches may not terminate a game prior to becoming a regulation game or as per the NJSIAA adopted 10 run rule.
- Coaches terminating a game other than the above are subject to disciplinary action.
- NJSIAA Baseball Rules Committee will look at this in June.



FORCE-PLAY SLIDE RULE



Runners are never required to slide, but if a runner elects to slide at any base, it must be legal. A legal slide can either be feet first or head first. If a runner slides feet first, at least one leg and buttock shall be on the ground.

FORCE-PLAY SLIDE RULE



Runners may not pop-up into the fielder.

FORCE-PLAY SLIDE RULE



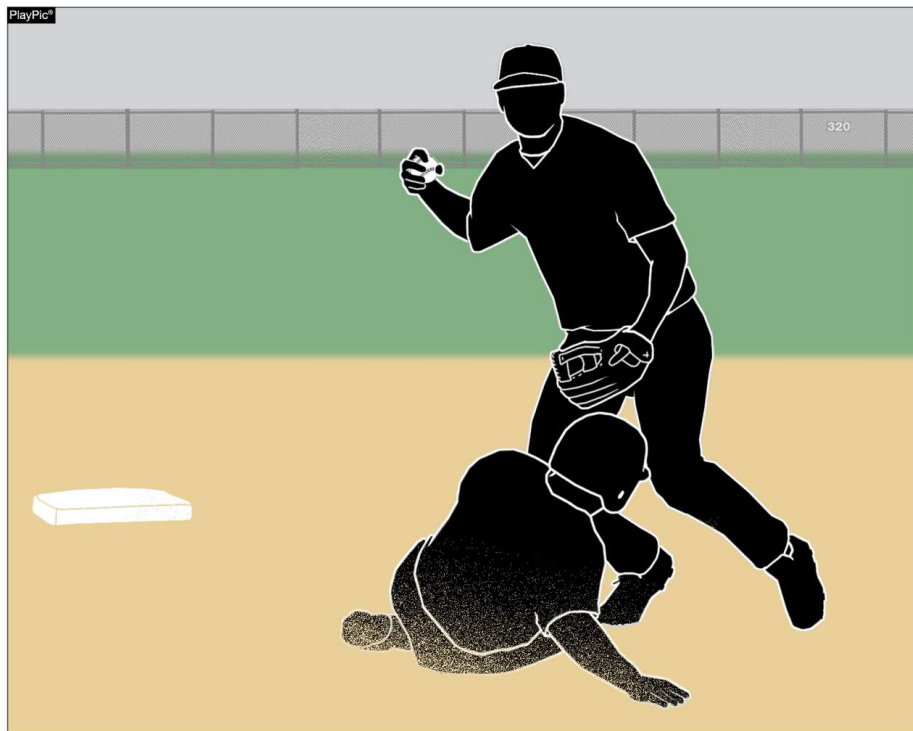
Runners may not have a leg raised higher than the fielder's knee.

FORCE-PLAY SLIDE RULE



Except at home plate, runners may not slide through or beyond the base.

FORCE-PLAY SLIDE RULE



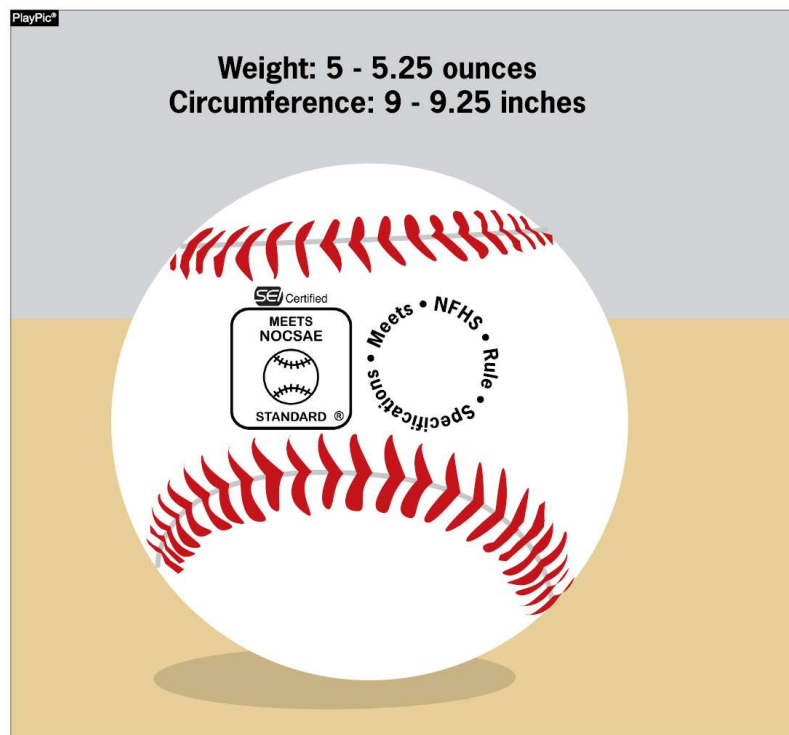
Runners may not slide away from a base in the direction of the fielder. But a runner may slide in a direction away from a fielder to avoid making contact or altering the play of the fielder.

FORCE-PLAY SLIDE RULE



The runner is out when he illegally slides. On a force play, the runner is also guilty of interference. The batter-runner is also declared out and all other runners must return to the base occupied at the time of the pitch.

COMPLIANT BASEBALL



The ball shall meet the current NOCSAE standard for baseball effective January 1, 2020. The NFHS authentication mark and the NOCSAE mark shall both be visible on the ball.





BASEBALLS RULE 1-3-1

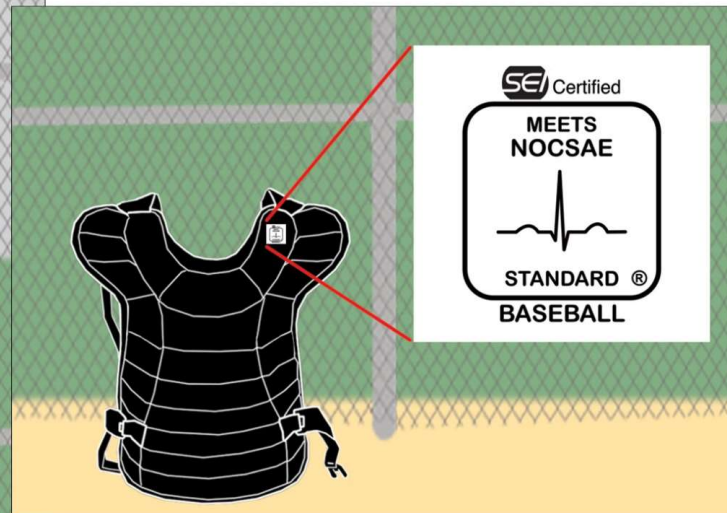
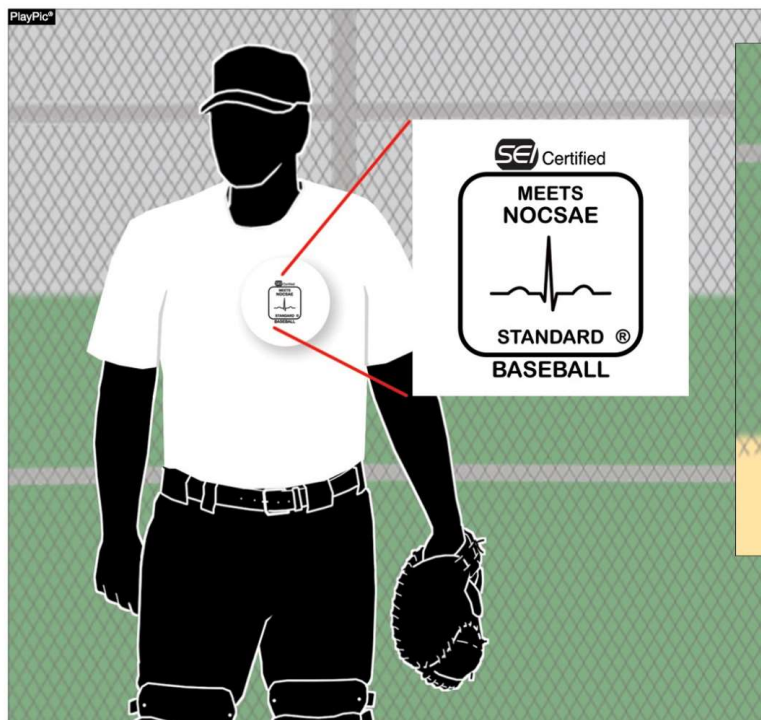
- Effective January 1, 2020 the SEI/NOCSAE mark is required on all baseballs that meet the NOCSAE standard that will be used in high school competition.
- Baseballs shall have the SEI/NOCSAE mark along with the NFHS Authenticating Mark.

- **Rationale:**

To maintain a consistent and uniform standard for high school competition. To ensure that every baseball manufactured meets the same level of quality and playability.



COMPLIANT BODY AND CHEST PROTECTOR



The catcher's body/chest protector shall meet the NOCSAE standard effective Jan. 1, 2020.



CHEST AND BODY PROTECTOR RULE 1-5-3

- The catcher shall wear, in addition to a head protector, a mask with a throat protector, body/chest protector that meets the NOCSAE standard at the time of manufacture (Effective January 1, 2020), protective cup (male only), and baseball protective shin guards. The SEI/NOCSAE mark is required on all body/chest protectors that meets the NOCSAE standard at the time of manufacture that will be used in high school competition.





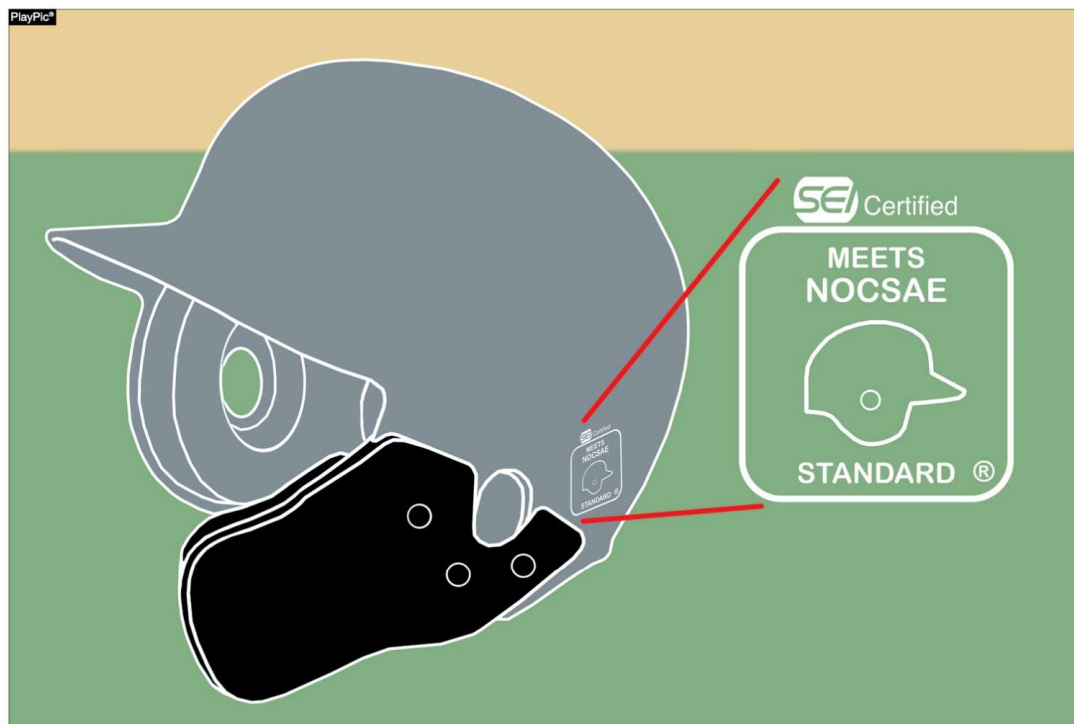
CHEST AND BODY PROTECTOR RULE 1-5-3

- **Rationale:**

A SEI/NOCSAE standard has been developed to protect the heart and the cardiac silhouette from commotio cordis. The NOCSAE standard could be included in a product that is either a separate device/apparel or a device constructed into a traditional chest protector. This proposal is recommended and endorsed by the NFHS Sports Medicine Advisory Committee (SMAC) to minimize risk. The catcher has to wear either a chest protector that meets the NOCSAE standard or a body protector that meets the NOCSAE standard underneath a traditional chest protector. It is the responsibility of the coach to verify that his/her players are properly equipped and in uniform.

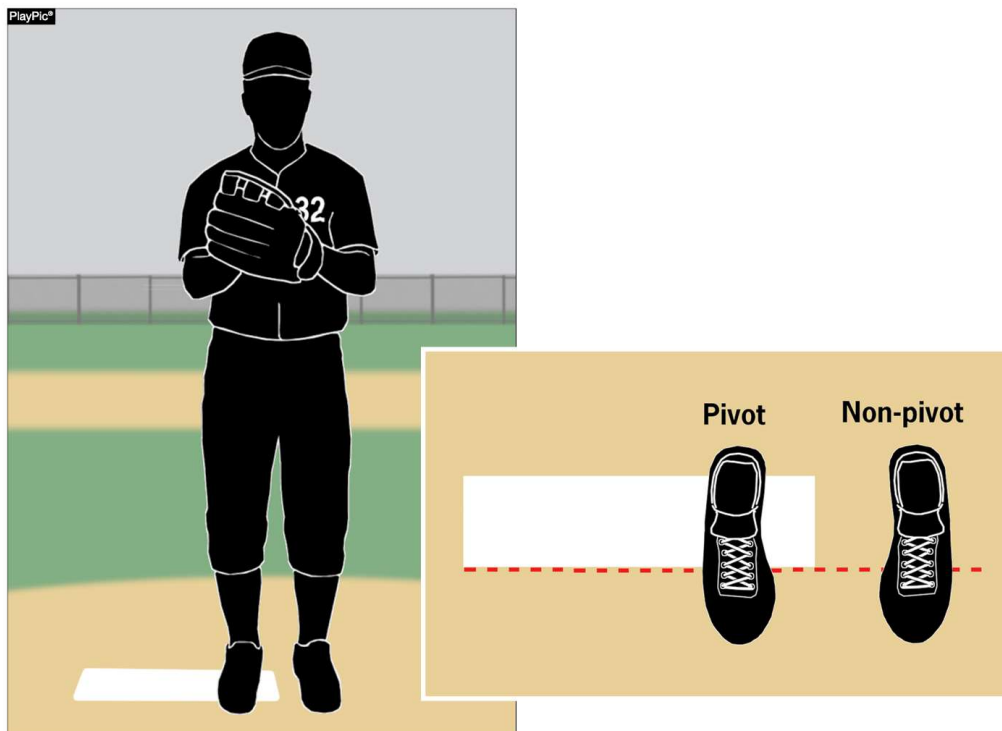


COMPLIANCE OF PLAYER EQUIPMENT



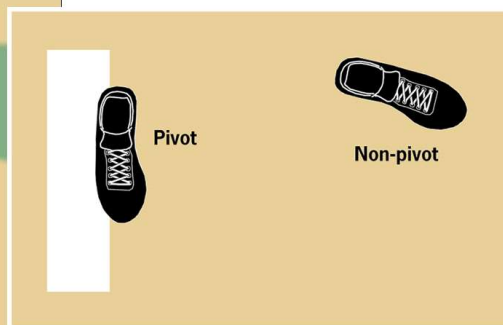
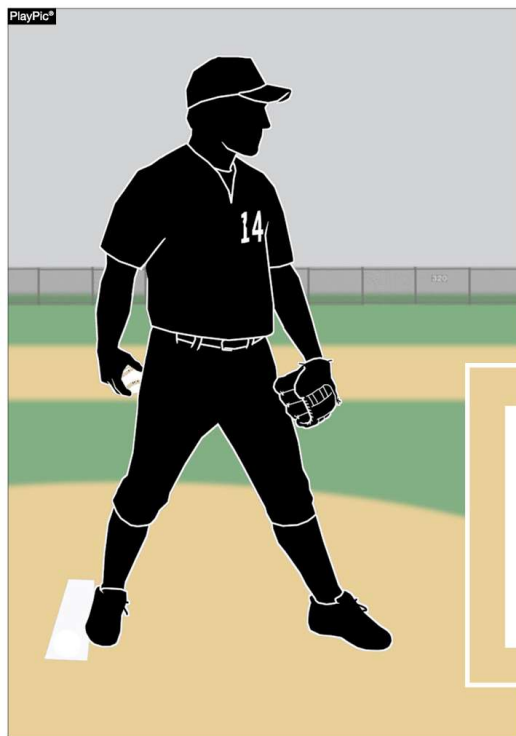
A face mask/guard specifically designed for a particular helmet model may be attached after manufacture, provided that procedure is approved by the manufacturer and meets the SEI/NOCSAE standard at the time of manufacture.

PROPER PITCHING POSITIONS



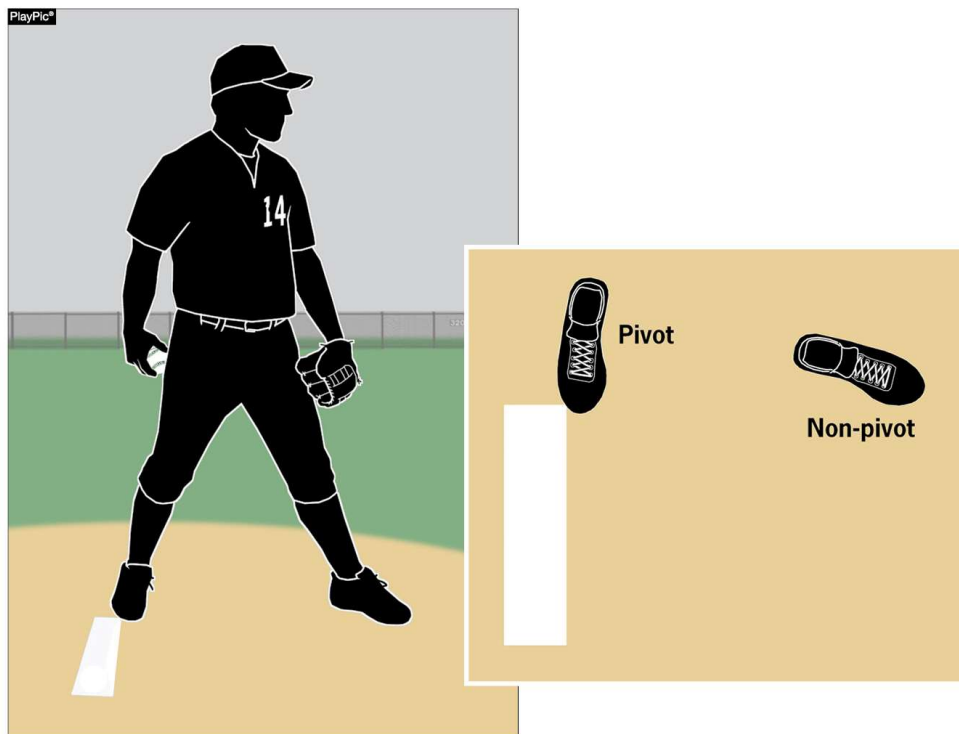
The windup is one of two legal pitching positions. For the windup, the pitcher's non-pivot foot shall be in any position on or behind a line extending through the front edge of the pitcher's plate.

PROPER PITCHING POSITIONS



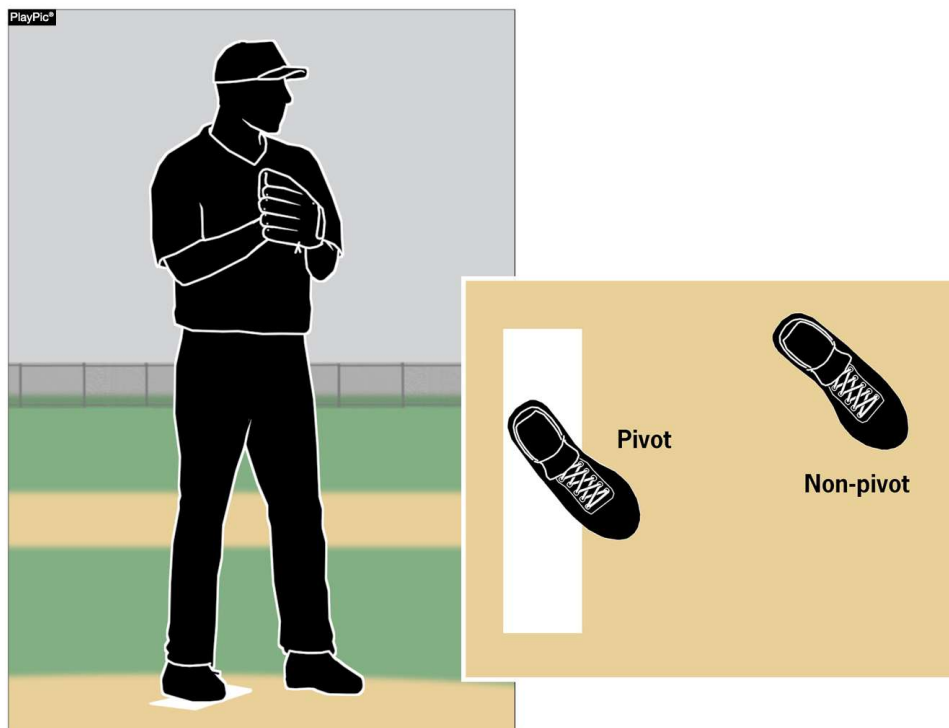
The set is one of two legal pitching positions. For the set position, a pitcher shall stand with his entire non-pivot foot in front of a line extending through the front edge of the pitcher's plate and with his pivot foot in contact with or directly in front of and parallel to the pitcher's plate.

PROPER PITCHING POSITIONS



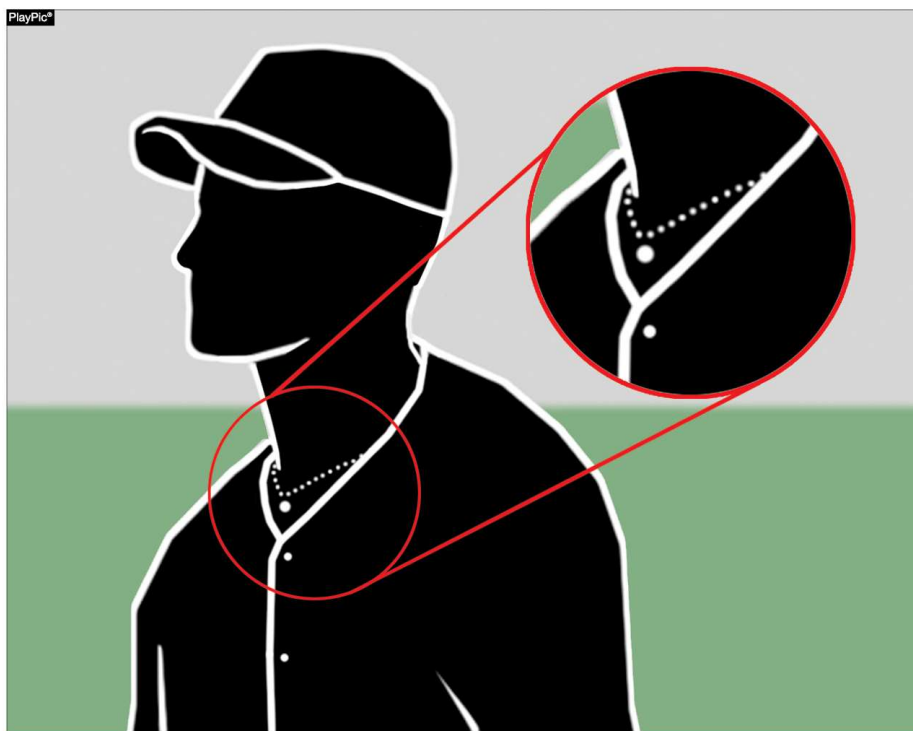
Pitchers are no longer required to have their entire pivot foot in contact with the pitcher's plate. This recognizes that many mounds are such that it is problematic for the pitcher to have his entire pivot foot in contact with the pitcher's plate.

PROPER PITCHING POSITIONS



The so-called hybrid stance is illegal as it does not meet the requirements of either the windup or set positions.

ENFORCEMENT OF NFHS JEWELRY RULE



Jewelry, including necklaces, bracelets and earrings, shall not be worn except for religious or medical medals. A religious medal must be taped and worn under the uniform. A medical alert must be taped and may be visible.



NJSIAA BASEBALL EXAM

- Opens January 15
- Closes March 31

Format

Baseball Mechanics 10 questions
NJSIAA Regulations 10 questions
NFHS Rule Changes 5 questions
NFHS Points of Emphasis 5 questions
Baseball Rules 20 out of 50 questions



Passing Score = 80%



NJSIAA BASEBALL EXAM

Most Missed Questions as of
February 10th.

261 Tests submitted; roughly 14% of registered officials.
13 Officials have not yet passed.






WITH R1 ON FIRST, F1 IS IN THE SET POSITION. F3 HOLDS THE RUNNER BY STANDING WITH ONE FOOT IN FOUL TERRITORY. THE FIRST-BASE COACH NOTICES AND COMPLAINS. AS BASE UMPIRE, YOU SHOULD:

12.1% answered incorrectly.

Inform the coach that there is no infraction. As long as one foot is in fair territory, the fielder is in legal position.






RIGHT-HANDED B1 LIFTS HIS LEFT FOOT AS THE PITCH IS DELIVERED AND STEPS INTO AN OUTSIDE PITCH. B1'S LEFT FOOT COMES DOWN WITH THE TOE ON THE PLATE AND HIS HEEL ON THE CHALK OF THE BATTER'S BOX BEFORE THE PITCH IS FOULED.

12.7% answered incorrectly.

B1 is out. Rule Book 7-3-2





B1 BUNTS DOWN THE FIRST-BASE LINE AND DROPS HIS BAT IN FAIR TERRITORY. THE BACKSPIN ON THE BALL CAUSES IT TO ROLL BACK INTO THE BAT. F2 FIELDS THE BALL, BUT B1 IS SAFE AT FIRST.

13.2% answered incorrectly.

The play stands; there is no infraction. Bat did not hit the ball; ball hit the bat. **Rule Book 5-1-1b; 5-1-1f; 8-4-1d**






IF THE ASSISTANT COACH, WHO IS THE FIRST-BASE COACH, LEAVES THE VICINITY OF HIS COACHING BOX TO ARGUE A CLOSE CALL AT FIRST BASE:

13.4% answered incorrectly.

The Assistant Coach and Head Coach both receive a written warning and shall be restricted to the bench for the remainder of the game. The Head Coach is responsible for the behavior and sportsmanship of his/her coaching staff and players. **Rule 3-3-1f(6) penalty**





THE RUNNER IS STANDING ON 2ND BASE WHEN A LINE DRIVE HITS HIM. F4 IS PLAYING IN FRONT OF HIM AND DID NOT CONTACT THE BATTED BALL. F6 WAS BEHIND SECOND BASE IN POSITION TO CATCH THE LINE DRIVE.

14.4% answered incorrectly.

The ball is dead and the runner is out. The shortstop still had a play on the ball and was denied the opportunity by the runner's action. **Rule Book 8-4k**





IF A THROWN BALL IS TOUCHED WITH AN ILLEGAL GLOVE OR MITT, AND IS DISCOVERED BY THE UMPIRE, THE COACH MAY CHOOSE TO TAKE THE RESULT OF THE PLAY OR THE AWARD OF:

15.6% answered incorrectly.

Two base award on a thrown ball.






IF A PITCHER IS REPLACED AS A PITCHER AND HIS REPLACEMENT REQUIRES MORE WARM-UP PITCHES THAN IS PERMITTED:

16.3% answered incorrectly.

He may return to the game if he is eligible to do so, but not to pitch. An example would be: Coach removes pitcher and brings in the lefty right fielder to pitch to a left-handed batter. He has not had the opportunity to warm-up between innings and the coach says he needs more than 8 throws to be ready. He throws 12 warm-up pitches prior to pitching. After retiring a batter, the coach wants to re-enter the original pitcher. The original pitcher may return to the game since he was a starter and removed from the game once, but he may not return as a pitcher.

An umpire may make an exception to this rule for weather, such as cold weather or injury. **Rule 3-1-2; 6-2-2 exception.**





WITH R2 ON SECOND, R3 ON THIRD, AND ONE OUT, B1 HOMERS. R3 TOUCHES THE PLATE AND MALICIOUSLY CRASHES INTO THE CATCHER, WHO WAS STANDING OUT OF THE BASEPATH. R2, WHO HAD BEEN RUNNING ON THE PITCH, TOUCHED THE PLATE IMMEDIATELY AFTER R3 AND BEFORE R3'S CONTACT WITH THE CATCHER.

18.0% answered incorrectly.

Three runs score. R3 touched the plate prior to the malicious contact and thus scores. The ball was dead on the Home Run and the umpire shall award the runner the appropriate bases they would have obtained had the malicious contact not occurred. **Rule Book 2-21-1b, 3-3-1m**
Penalty, 8-4-2e





WITH R3 ON THIRD BASE AND R1 ON 1ST BASE, THE PITCHER STEPS TOWARD THIRD AND FAKES A THROW WITHOUT DISENGAGING THE PITCHER'S PLATE. HE THEN TURNS AND THROWS TO FIRST BASE. THE UMPIRE SHOULD:

18.8% answered incorrectly.

Make a call at first as there is no infraction. It would be a balk if F1 had faked to third without disengaging the pitcher's plate and then faked a throw to first.





BACKSWING INTERFERENCE IS WHEN:

19.8% answered incorrectly.

The batter contacts the catcher or his equipment PRIOR to the pitch. The umpire shall call time and direct the batter, catcher and pitcher to reset. This is different than follow-through interference during or after a pitch.

Rule Book 2-21-5






THE PITCHER, WITH HIS PIVOT FOOT PARALLEL TO AND IN CONTACT WITH THE PITCHER'S PLATE, DOES NOT COME TO A COMPLETE STOP AND DELIVERS A PITCH. THERE IS NO ONE ON BASE AND THE BATTER HITS A HOME RUN. THE UMPIRE SHOULD:

19.9% answered incorrectly.

Declare an immediate dead ball when the pitcher threw pitch. By definition, it is an illegal pitch.

High School rules differ from professional rules on this point. **Rule Book 6-1-3 penalty**





B1 HOMERS OVER THE LEFT-FIELD FENCE, BUT DOESN'T TOUCH SECOND BASE. AS B1 TOUCHES THIRD, THE THIRD-BASE COACH SENDS HIM BACK TO TOUCH THE MISSED BASE. B1 COMPLIES AND CONTINUES AROUND THE BASES, TOUCHING THIRD AND HOME.

20.4% answered incorrectly.

B1 is out if the defense appeals. On a home run, the ball is dead. Once B1 touched the next base, he is unable to return and touch a prior missed base. **Rule Book 8-2-5**






WITH R1 ON FIRST, R3 ON THIRD AND ONE OUT, R1 BREAKS WITH THE PITCH. B1 LINES TO RIGHT CENTER AND F8 MAKES A SENSATIONAL CATCH. R3 TAGS AND SCORES, BUT R1 IS DOUBLED OFF FIRST.

20.9% answered incorrectly.

R3's run scores only if he touches home plate prior to R1 being out at first base. Rule Book 9-1-1





WITH NO ONE OUT AND R1 ON FIRST, B1 HITS A SCREAMING LINE DRIVE DOWN THE RIGHT-FIELD LINE. R1 IS APPROACHING SECOND WHEN F9 MAKES A RUNNING CATCH AND FIRES WILDLY TO FIRST IN AN ATTEMPT TO DOUBLE UP R1. R1 HAS NOT YET TOUCHED SECOND WHEN F9'S THROW GOES INTO DEAD-BALL TERRITORY. THE BASE UMPIRE YELLS, TWO-BASE AWARD AND POINTS TO THIRD. R1 STARTS FOR THIRD AND IS STANDING ON SECOND AS HIS COACH YELLS, RETOUCH FIRST. R1 RETREATS AND TOUCHES ALL BASES IN THE PROPER ORDER.

31.9% answered incorrectly.

R1 is out on appeal. R1 could have returned immediately and retouched first on the dead ball. However, once he touched second and started for third, he cannot retouch a base missed or left early on a dead ball. **Rule Book 5-2-2b1, 8-2-5, 8-4-2q Case Book 8.2.5a**





THE UMPIRE NOTICES THAT F3 IS WEARING AN ELBOW BRACE THAT HAS EXPOSED METAL. THE UMPIRE SHOULD:

32.4% answered incorrectly.

The best answer is: If the brace is unaltered from the original state, no additional padding is necessary. **Case Book 1.5.8 Situation E**



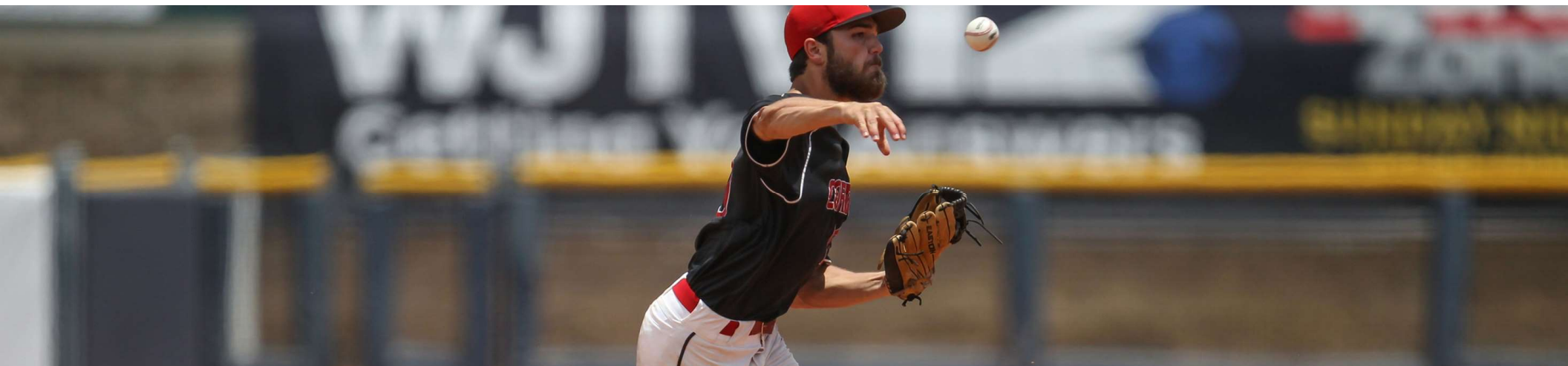


TEAM A IS AHEAD 32-1 AFTER THREE INNINGS OF PLAY. THE GAME IS ENDED BY MUTUAL AGREEMENT OF THE COACHES. NJSIAA REGULATIONS REQUIRE THAT A GAME MUST BE PLAYED TO THE POINT OF A REGULATION GAME UNLESS SHORTENED BY THE 10 RUN RULE.

61.1% Incorrectly

The answer is correct. Termination of a game prior to 5 innings or by the Ten- run rule is allowed by State Association adoption. Despite wording in NFHS rule, NJSIAA has not yet adopted this as part of their game ending procedure. It will be presented to the NJSIAA baseball rules committee in June and may be adopted at that time for 2022. **Rule 4-2-2; NJSIAA adopted game ending procedure**





National Federation of State High School Associations

PO Box 690 | Indianapolis, IN 46206

Phone: 317-972-6900 | Fax: 317.822.5700

www.nfhs.org |

**THANK YOU AND HAVE A GREAT
BASEBALL SEASON!**

