

FTB 204

High Intensity White Strobe Split Enclosure with 30' Flashhead Separation

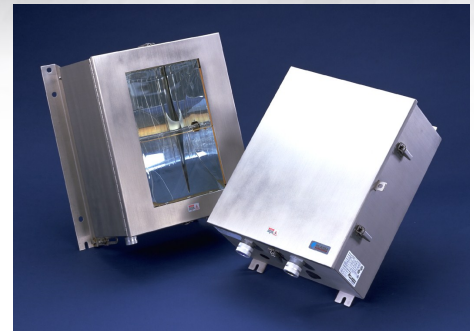
Application

The FTB 204 is an FAA type L-856 high intensity white xenon strobe system that provides a white flashing light for day, twilight and night for structures over 500' AGL. For FAA tower types B3 to B6 and C3 to C6.

Features/Benefits

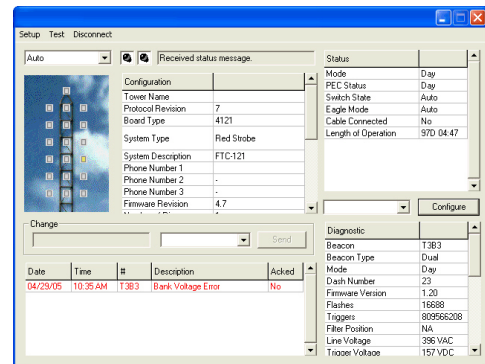
- ETL certified for FAA applications
- Certified unidirectional 120° horizontal beam
- 30' separation between PC and FH locates 90% of electronics in an ozone free environment resulting in extended component life
- Available in multiple input voltages
- Full System includes EagleSmart controller, handheld programmer & software
- Custom installation kits and stamped drawings—see flip side
- NEMA 4X stainless steel outdoor rated enclosure
- 24/7/365 Monitoring & Call Center services
- Component level technical support 7am-7pm CST M-F
- Remote diagnostics with POTs connection to FTC 121
- (2) year warranty on all parts including tubes
- Listed on the FAA [Buy American Act](#) registry

Certified and Listed to meet all the environmental and performance criteria for: FAA Type L-856; FAA-AC 150/5345-43F. Manufactured to meet or exceed specifications for Transport Canada K310B, ICAO Annex 14 Type A (white); DGAC



EagleSmart

FTC 121 Eagle Controller – On site or remote diagnostics, programming and monitoring. Digital display with drop down menus.



Optional:

FTC 140 Controller– LED display with clear green/red indicators for simple alarm identifications

FTB 204 High Intensity White Strobe Split Enclosure with 30' Flashhead Separation

Custom Conduit and Wire Kits

For over 40 years Flash has designed and supplied FAA and NEC compliant electrical systems for towers, chimneys, and other structures. Our expertise includes lighting systems, elevator circuits, utility circuits, AC electrical distribution platform circuits, area lighting, fiber optic, telco, communication, lift booms, and other needs. State engineering stamped drawings for the United States and some US properties are available as an option.

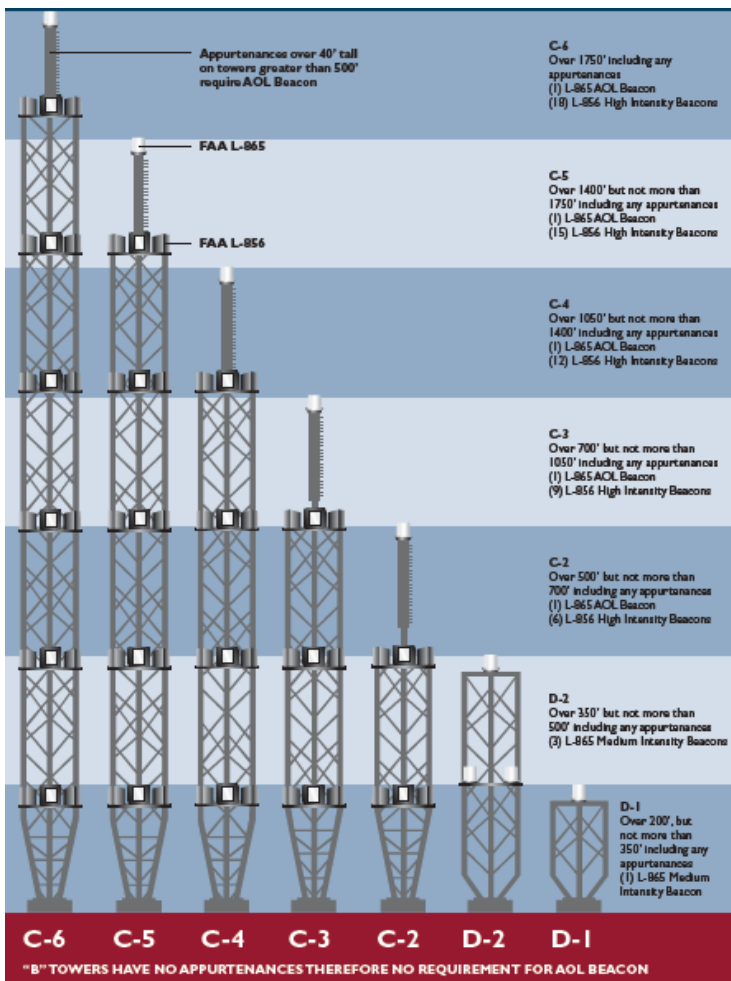


Diagram from FAA Advisory Circular AC 70/7460-1K Change 2, A1-18. The FAA determination for these towers are: Chapters 2, 4, 7

These guidelines are for reference only. Please contact Flash for specific questions regarding obstruction marking.