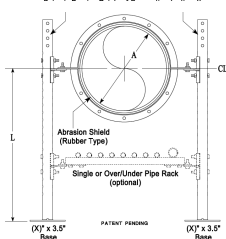
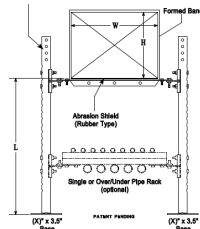




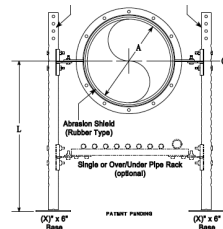
PRODUCT REFERENCE GUIDE



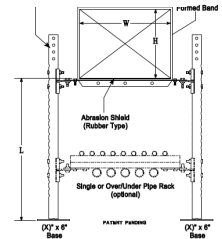
ROOF MOUNT 360°
PRODUCT NO. 100-R
 Catalog P. 6



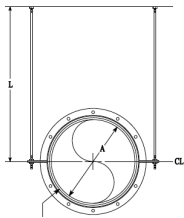
ROOF MOUNT STRAIGHT
PRODUCT NO. 101-R
 Catalog P. 6



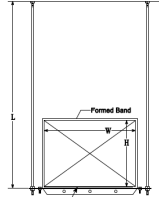
GRADE MOUNT 360°
PRODUCT NO. 100-G
 Catalog P. 6



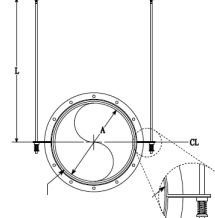
GRADE MOUNT STRAIGHT
PRODUCT NO. 101-G
 Catalog P. 6



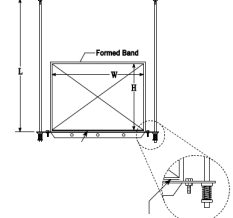
SUSPENDED 360°
PRODUCT NO. 100-S
 Catalog P. 7



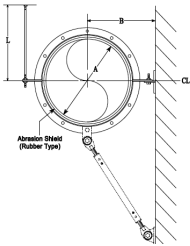
SUSPENDED STRAIGHT
PRODUCT NO. 101-S
 Catalog P. 7



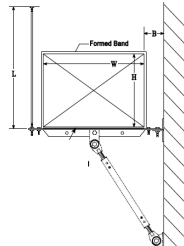
SUSPENDED W ISO 360°
PRODUCT NO. 200-SI
 Catalog P. 7



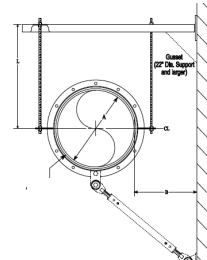
SUSPENDED W ISO STRAIGHT
PRODUCT NO. 201-SI
 Catalog P. 7



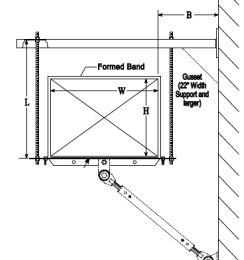
WALL HORIZONTAL 360°
PRODUCT NO. 100-WH
 Catalog P. 8



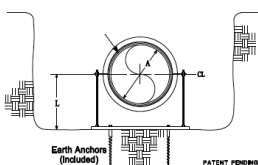
WALL HORIZONTAL STRAIGHT
PRODUCT NO. 101-WH
 Catalog P. 8



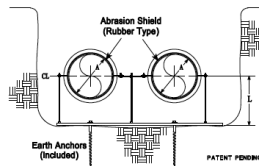
CANTILEVER 360°
PRODUCT NO. 100-C
 Catalog P. 8



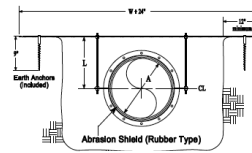
CANTILEVER STRAIGHT
PRODUCT NO. 101-C
 Catalog P. 8



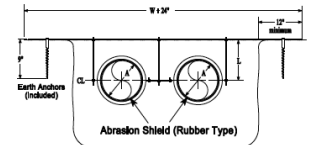
BELOW GRADE ANCHOR
PRODUCT NO. 300-A
 Catalog P. 9



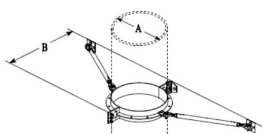
BELOW GRADE ANCHOR
SIDE X SIDE
PRODUCT NO. 300-SA
 Catalog P. 9



BELOW GRADE CHANNEL
PRODUCT NO. 300-C
 Catalog P. 9



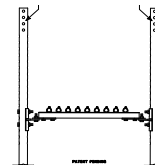
BELOW GRADE CHANNEL
SIDE X SIDE
PRODUCT NO. 300-SC
 Catalog P. 9



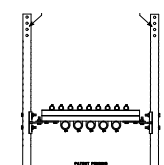
VERTICAL WALL RISER
PRODUCT NO. 100-WR
 Catalog P. 4



SEISMIC BRACE
PRODUCT NO. 710
 Catalog P. 5



SINGLE PIPE RACK
PRODUCT NO. 901
 Catalog P. 5



OVER/UNDER PIPE RACK
PRODUCT NO. 902
 Catalog P. 5