



天津赛瑞机器设备有限公司

Tianjin SERI Machinery Equipment Co.,Ltd



天津赛瑞机器设备有限公司是按照现代化企业模式，由多元投资组建的国有控股股份制企业，始建于1992年。厂房总面积147000平方米，其中包括：重型机械加工厂、大型电机制造车间（82000平方米）、机加工车间（30000平方米）和金属钢结构制造厂（35000平方米），坐落在天津市东丽区赛瑞路。

赛瑞公司面向冶金、电力、起重等行业，承揽设计、加工制造、安装各种大型、重型成套设备、整机设备和技术服务；承揽设计、制造各种冶炼设备、轧钢设备、水电设备、起重设备，并已进入风电、环保和港口机械等领域；承揽大型电机、变压器的设计、制造业务。

天津赛瑞公司高度重视产品质量、环境保护工作和员工健康，建立了科学的保证体系，先后通过了ISO9001:2000、ISO14001:2004、ISO18001:2001管理体系和中国船级社的认证，并取得中国海洋石油天然气总公司海上设备维修的资格证书。

赛瑞公司与国内外客户合作，制造大型冶金成套设备、水电设备、工业炉及大、中型电机，产品质量和服务得到中外客户的认可和好评。

2006年5月公司取得特种设备（QD型125t桥式起重机）制造许可证。

2006年7月经天津市科委审核，认定为高新技术企业。

国际客户

德国：西马克公司、洛伊公司、卓轮公司；

意大利：达涅利公司；

奥地利：奥钢联；

法国：阿尔斯通公司；

美国：通用电气公司、宝洁公司、开利公司；

澳大利亚：必和必拓公司；

西班牙：哥美飒风电公司；

日本：IHI公司、新日铁公司；

印尼：POS0 II 级水电站。

国内用户

一重、哈电、宝钢、鞍钢、武钢、酒钢、大连三高、包头北雷、兴澄特种钢厂、天重、天钢等。



Tianjin SERI Machinery Equipment Corporation Limited is an state-holding joint–stock enterprise established in accordance with modernization model by multiple investment. She has about 147000 m² factory area (There into: 30000 m² for Machining workshop, 82000 m² for Heavy machining manufactory , Large motor manufacturing plant and 35000 m² for manufactory of steel structure) and locates on SERI road of Dongli district, Tianjin. She had built in 1992 .

SERI facing to metallurgical, power and weigh-lifting industry, undertakes the following businesses: Designing, Manufacturing and installation for diversified enormous and heave complete sets equipments and technical service. Designing, Manufacturing of equipment for metallurgical, steel milling, hydro power and weight-lifting fields. Now we are entered into the fields of wind power, environment protection and sea-port machinery. And we also undertake designing and manufacturing of large motors and transformer.



SERI has been paying much attention to product quality, environment protection and professional health and has established scientific ensuring system. She has got certificate of ISO9001:2000 ISO14001:2004 ISO18001:2001 and certificate issued by China classification Society as well as qualification credential of off-shore equipment maintenance issued by China ocean petroleum natural gas general company.

The large-size metallurgical equipments, hydro-power equipments, Industrial furnaces and large-size and middle-size electric motors manufactured by SERI have been received good reputation and admire from its overseas and domestic users.

License for manufacturing special equipment (Overhead traveling crane type QD with capacity 125 t) awarded in may,2006.

New High-tech enterprise awarded by Tianjing science and technology committee in July,2006.

FOREIGN CUSTOMERS

Germany: SMS Group, Loi Company, Zollern Company.

Italy: Danieli Company.

Austria: VAI

France: Alstom Company.

America: General Electric Company (GE)

Carrier Company . P&G Company

Australia: BHPB Company.

Spain: Gamesa Company .

Japan: IHI Company ,

Nippon steel plant Engineering Co., Ltd.

Indonesia: POSO II class Hydro-power station.



距码头24公里，距天津国际机场25公里，距高速公路3公里，距铁路15公里
Distance to Port (with ocean access): 24 km Distance to Highway: 3 km
Distance to International Airdrome: 25 km Distance to Railway: 15 km



赛瑞公司重型加工厂
Heavy Machining Manufactory of SERI



赛瑞公司重型加工车间
Heavy machining manufactory of SERI



赛瑞公司重型加工车间
Heavy machining manufactory of SERI



金属钢结构制造厂
Manufactory of steel structure



赛瑞公司加工车间
Machining Workshop of SERI



高新技术企业认定证书

企业名称：天津赛瑞机器设备有限公司
统一编号：0612010B0104
有效期二年

天津市科学技术委员会
2006年 07月 0日

中华人民共和国科学技术部监制

高新技术企业认定证书
Certificate of New High-tech Enterprise

质量管理和质量保证

Quality Management
Quality Assurance

Register No.: 00906Q11329R3M



CHINA GREAT WALL (TIANJIN) QUALITY
ASSURANCE CENTRE
CERTIFICATE OF CONFORMITY OF
QUALITY MANAGEMENT SYSTEM CERTIFICATION

This is to certify that quality management system
of Tianjin SERI Machinery Equipment Corporation Limited
in 11, SERI Road, Wuxia street, Dongli, district, Tianjin, China
Post code: 300301

Is in conformity with

GB/T 19001-2000 — ISO 9001:2000 Standard

This certificate is valid to the following product(s)/service:

**Mechanical equipment machining and manufacturing,
Repairing motor and transformer.**

Term of validity of this certificate from
Nov. 2nd, 2006 to Nov. 1st, 2009

Center stamp



general manager

Ruan Qiang



Registration No.: CNAB009-Q

Please see about our web: www.isoqgw.net or tel: 022-23541987
to get the certificate's keeping circumstance of valid condition.

中华人民共和国
特种设备制造许可证
Manufacture License of Special Equipment
People's Republic of China

(起重机械)

编号: TS2410A63-2010

单位名称: 天津赛瑞机器设备有限公司

制造地址: 天津市东丽区津塘公路钢管公司院内

经审查, 获准从事下列类型起重机械的制造:

桥式起重机

具体的设备级别、型式、型号/参数见明细表。

审批机关: 国家质量监督检验检疫总局 发证机关:

有效期至: 2010年5月16日

发证日期: 2006年5月17日





中 国 船 级 社
天 津 分 社

格式: RKZ-1

编号: TJR060054

船舶和海上设施服务单位认证证书

单位名称: 天津赛瑞机器设备有限公司
单位地址: 东丽区津塘公路天津钢管公司厂内
评估标识号: XCR328

根据国家有关规定和我分社《船舶和海上设施修理服务单位能力评估办法》, 对上述单位主要生产设备、检测试验设备、人员资格及质量管理体系进行了评估, 认为其具有承担下列服务项目的能力, 特发此证。

服务项目:

- 1、船体非主要结构修理、舾装设备修理;
- 2、5000kW以下柴油机、甲板机械、管系及阀件修理;
- 3、一般船舶电气设备修理。

本证书有效期至: 2007年03月26日
发证日期: 2006年04月19日
发证单位: 中国船级社天津分社

注明: 1 本分社签发的评估证书只反映被评估单位当时状况, 被评估单位应保持被评估时的状况水平, 如与评估时状况不符、服务质量不合格者, 本社将取消其证书。2 本证书的签发并不意味着可以免除申请船东、船检及有关方面对其服务质量或产品的检查。3. 本证书的签发不能免除被评估单位对顾客提供合格服务的责任。

Certificate of service unit for ship-building and ship-repairing

环境保护、健康、安全

E H S

Environmental Protection

Health

Safety

CERTIFICATE OF REGISTRATION

Registration No. 037R2-1

This is to certify that the environmental management system of
**Tianjin SERI Machinery Equipment
Corporation Limited**

Add: Jintang Road, Dongli District, Tianjin, 300301, P. R. China

is in conformity with
ISO 14001: 2004

This certificate is valid for the following scope:

**The Activities of the Repairing and
Manufacture of Machine Equipment
and the Repairing of Motor and Transformer**

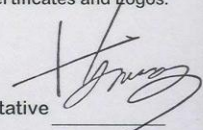
The certificate changed on March 15, 2006.

This certificate is valid from January 13, 2005 to January 12, 2008.

In the case that the organization regularly receives surveillance assessments, the certificate shall be valid when used together with the Notice for Maintenance of Use of Certificates and Logos.

China Certification Center, Inc.

(Incorporated with original China for Environmental Management System and Beijing 9000 Certification Center for quality System)

CCCI Representative 

Date: March 15, 2006



066



职业健康安全管理体系认证证书

OCCUPATIONAL HEALTH & SAFETY MANAGEMENT SYSTEM (OHSMS) CERTIFICATE
证书编号: 063-05-S1-0044-R1-L-1

兹证明

天津钢管集团有限公司
天津赛瑞机器设备有限公司

中国天津市东丽区津塘公路 300301

建立的职业健康安全管理体系符合:

职业健康安全管理体系 规范

GB/T28001-2001

覆盖范围如下:

机械设备加工、制造、机电设备修理及相关活动

中国安全生产科学研究院

CHINA ACADEMY OF SAFETY SCIENCE & TECHNOLOGY

OHSMS

This is to certify that

the Occupational Health & Safety Management System of

TIANJIN PIPE (GROUP) CORPORATION

TIANJIN SERI MACHINERY EQUIPMENT CORPORATION LTD.

Jintang Road, Dongli District, Tianjin, 300301 P.R. China

has been assessed and found to be in conformity with the requirements of

GB/T28001---2001

and the scopes covered by the system are

**MACHINING AND MANUFACTURE OF MECHANICAL EQUIPMENTS, REPAIR OF MECHANICAL AND ELECTRICAL
EQUIPMENTS, AND RELATIVE ACTIVITIES**

发证日期: 2005年11月11日

Date of Issue: 11/11/2005

换证日期: 2005年12月30日

Date of Re-certification: 12/30/2005

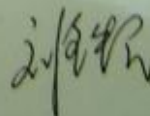
有效期: 2005年12月30日—2008年12月29日

Duration of Validity: Dec 30, 2005—Dec 29, 2008



CNAB063-S

签发 (院长):



On behalf of Certification Agency

Liu Tiemin

采用并实施科学、先进的管理方法

Actualizing Advanced and Scientific Management Method

- 改善工作环境
To Improve Working Environment
- 优化工作流程
To Optimize Working Flow
- 提高管理水平
To Enhance Management Level
- 提高工作效率
To Enhance Working Efficiency
- 提高工作质量
To Enhance Working Quality
- 提高产品质量
To Enhance Product Quality

先进的、富有成效的现场管理（7S）

Advanced & Effectively Site Management

- 整理 — SEIRI (Organization)
- 整顿 — SEITOM (Neatness)
- 清洁 — SEISO (Cleansing)
- 清扫 — SEIKETSU (Cleaning)
- 素养 — SHITSHKE (Discipline / Training)
- 安全 — SAFETY
- 节约 — SAVING

企业资源计划 — ERP

Enterprise Resource Planning

----- 计算机辅助设计

Computer Aided Design

----- 计算机辅助工艺过程设计

Computer Aided Procedure Planning

----- 项目管理

Project Management

----- 采购管理

Purchase Management

----- 仓储管理

Storage Management

----- 成本管理

Cost Management



赛瑞公司研发中心
SERI Developing and Researching Center



设计工程师进行产品设计
Designing Engineer is designing Products



技术人员利用CAD、CAPP软件进行图纸分析和工艺设计
Engineer is Analyzing Drawings and Designing Process Using CAD 、
CAPP



技术人员利用 CIMETRON-E 软件进行工艺方案的研究
Engineer is Researching Technical Program Using CIMETRON-E

主 要 设 备

Main Equipment



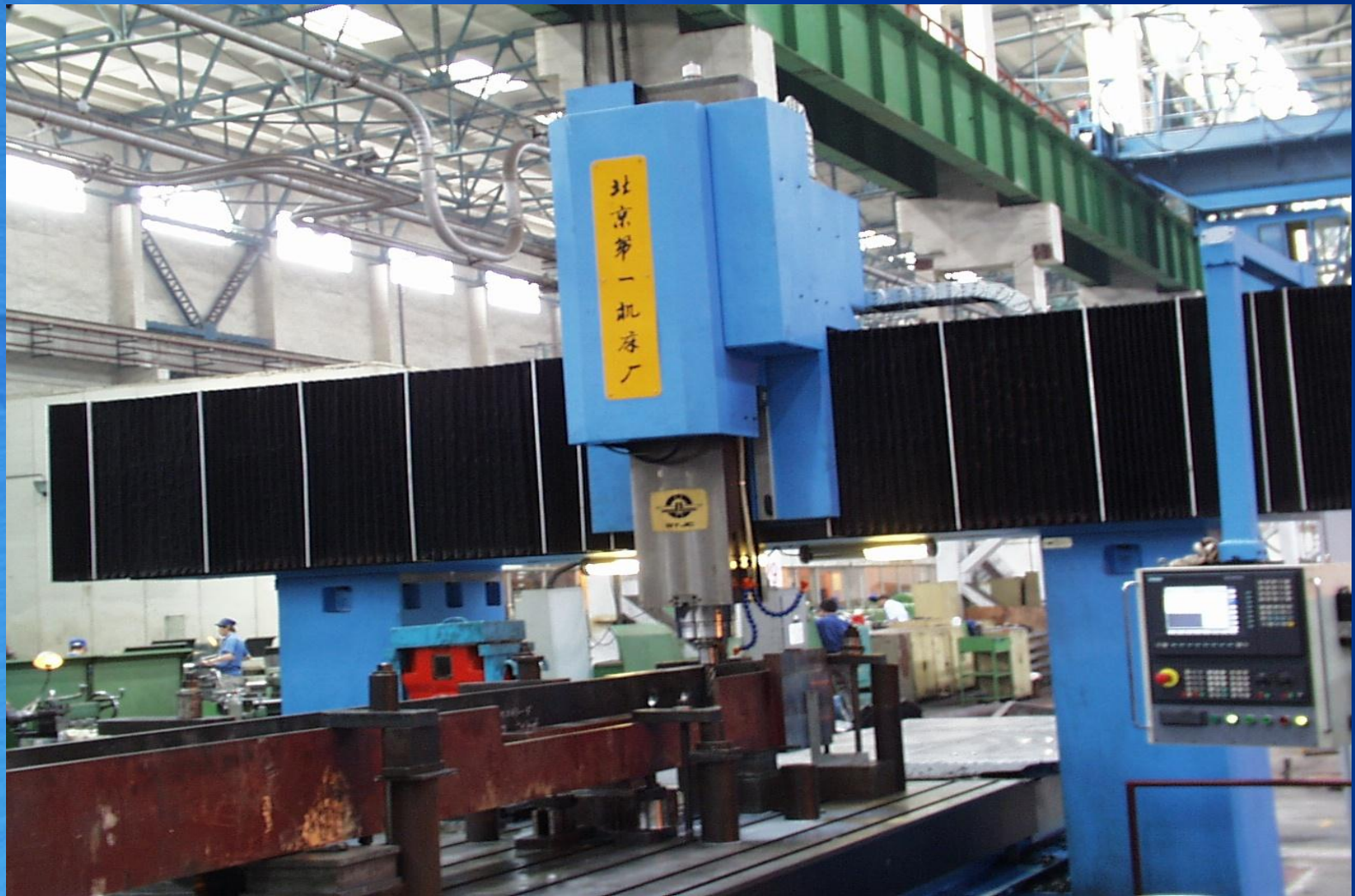
数控龙门镗铣床 XK2150×180
CNC planer Type Boring and Milling Machine
XK2150×180



数控龙门镗铣床 XK2140×120
CNC planer Type Boring and Milling Machine



数控龙门镗铣床 型号: XA2130(2.6)×100A/5
CNC planer Type Boring and Milling Machine



数控定梁龙门镗铣床
CNC Planer Type Boring and Milling Machine

龙门镗铣类设备一览表

序号	设备名称	规格型号	数量 (台)	设备性能
1	数控龙门铣床	XK2150×180	1	最大加工长度 18 m 最大加工宽度 5.6m 最大加工高度 5 m 工作台承重 360 t
2	数控龙门镗铣床	XK2140×120	1	最大加工长度: 12 m 最大加工高度: 3.5 m 最大加工宽度: 4.5 m 工作台承重: 240 t
3	数显龙门铣床	XA2130×100A/4	1	最大加工长度10 m 最大加工高度 2.9 m 最大加工宽度 3.5 m 工作台承重 80t
4	数显定梁龙门镗铣床	X2420	1	工作台面:2000×4000mm 主轴功率50KW

序号	设备名称	规格型号	数量 (台)	设备性能
6	数控定梁龙门镗铣床	XKAD2420	1	主轴端面至工作台 250~1000mm 行程： X:4300mm, Y:3100mm Z:750mm 最大承重:13t 工作台面:2000×4000mm

List of Planer Type boring and Milling Equipment

Item	Equipment designation	Type	Qty	Characteristic of equipment
1	CNC Planer type Milling Machine	XK2150×180	1	Machining L max 18 m Machining W max 5.6 m Machining H max 5 m Load-carrying Capacity of working table 360 t
2	CNC Planer Type Boring and Milling Machine	XK2140×120	1	Machining L max 12 m Machining W max 3.5 m Machining H max 4.5 m Load-carrying Capacity of working table 240 t

Item	Equipment designation	Type	Qty	Characteristic of equipment
3	Removable Planer Type Boring and Milling Machine	XA2130×100A/4	1	Working platform:3000×10000mm routing: X : 10880mm, Y :4280mm Z: 650mm Max loading: 80t
4	ND Stable planer Type Boring and Milling Machine	X2420	1	Working platform:2000×4000mm Max power: 50kw
5	CNC Planer Type Boring and Milling Machine	XKAD2420	1	From the end of spindle to working platform: 250~1000mm, routing: X : 4300mm, Y :3100mm, Z: 750mm Max loading: 13t Working platform:2000×4000mm



数控定梁桥式龙门加工中心 XHAE2720×60
CNC Planer Type Machining Center XHAE2720 X 60



数控立式加工中心 XHA738A
CNC Vertical Machining Center XHA738A



数控卧式铣镗加工中心 TH65140×160B/3D
CNC Horizontal Machining Center TH65140×160B/3D

加工中心类设备一览表

序号	设备名称	规格型号	数量 (台)	设备性能
1	数控卧式铣镗 加工中心	TH65140×160B/3D	1	工作台面:1400×1600mm 主轴镗杆直径:Φ125mm 最大承重:10t
2	数控定梁桥式 龙门加工中心	XHAE2720×60	1	工作台面:2000×6000mm 行程:X:6000mm Y:3000mm, Z:1250mm 最大承重:30t
3	数控立式加工 中心	XHA738A	1	工作面宽:800×2500mm 行程:X:2500mm Y:800mm, Z:800mm

List of Machining Center Type Boring and Milling Equipment

Item	Equipment designation	Type	Qty	Characteristic of equipment
1	CNC Horizontal Machining Center For Boring and Milling	TH65140×160B/3D	1	Working platform: 1400×1600mm Diameter of boring rod : Φ 125mm Max loading: 10t
2	CNC Stable Planer Bridge Type Machining Center	XHAE2720×60	1	Working platform: 2000×6000mm Routing: X : 6000mm Y :3000mm Z: 1250mm Max loading: 30t
3	CNC Vertical Machining Center	XHA738A	1	Working platform: 800×2500mm Routing: X : 2500mm Y: 800mm Z: 800mm



FB260/180 数控落地铣镗床
CNC Boring and Milling Machine



数控落地铣镗床 FB225/2配TDV80/2数控回转工作台

CNC Console Boring and Milling Machine

FB225/2 matching TDV80/2 CNC rotary working platform



数控落地镗床 TK6916A
CNC Console Boring Machine
TK6916A



数控镗床Tk6916B/150X50
CNC Console Boring Machine
Tk6916B/150X50



数控镗床Tk6916B/100X40
CNC Console Boring Machine
Tk6916B/100X40



数控镗床Tk6916B/60X30
CNC Console Boring Machine
Tk6916B/60X30



TKP6513 数控刨台卧式镗铣床
TKP6513 CNC Horizontal Boring and Milling Machine



德国三轴联动数控镗床
German CNC Three Shaft Boring
Machine



意大利HB130数控镗铣床
Italian HB 130 CNC Boring and Milling
Machine



数控卧式刨台镗铣床
CNC Horizontal Boring and Milling Machine

序号	设备名称	规格型号	数量 (台)	设备性能
4	数控镗床	Tk6916B/150X50	1	最大加工长度 18000 mm 最大加工宽度 5600 mm 最大加工高度 5000 mm 工作台承重 360 吨
5	数控镗床	TK6916B/100X40	1	最大加工长度 10000 mm 最大加工高度 4000mm Z轴最大行程 1200mm W轴最大行程 1200 mm 工作台最大承重 45t
6	数控镗床	TK6916B/60X30	1	最大加工长度 6000 mm 最大加工高度 3000 mm Z轴最大行程 1200 mm W轴最大行程 1200 mm 工作台最大承重 45t

序号	设备名称	规格型号	数量 (台)	设备性能
7	数控刨台式 镗铣床	RAPIDZR/12.5 1600×1250×1600	1	工作台面尺寸:1250×1600mm 工作台最大负重:12.5t 镗杆直径: Φ140mm
8	数控立柱可 调镗铣床	HB130	1	工作台面尺寸:1500×2000mm 工作台最大负重:10t 镗杆直径: Φ130mm
9	数控刨台卧 式铣镗床	TKP6513	1	工作台面:1400×1600mm 行程 (mm):X:3000,Y:1600,Z:1600 最大承重:10t

10	数显卧式铣镗床	TPX6111B/2	1	主轴镗杆直径: $\Phi 110\text{mm}$ 行程: X:1250mm, Y:1000mm 最大承重: 2.5t
11	数控落地镗床	FB225*12(2.3)	1	镗杆直径 $\Phi 225\text{mm}$ 行程(mm): x轴12000, Y轴5000 Z轴1250, W轴1200 平台承重20吨/平方米 工作台尺寸: 3600×4000mm
12	数显落地镗床	SKODA 200	1	主轴直径: $\Phi 200\text{mm}$ 行程(mm): X : 6000, Y : 3150 Z: 1000, W:1600
13	数控落地镗床	TK6916A(2.4)	1	镗杆直径: $\Phi 160\text{mm}$ 行程(mm): X : 8000, Y : 4000 Z: 1200, W:1200 工作平台承重: 45t/m ² 平台承重: 15t/ m ² 工作台尺寸: 3000×3000mm

序号	设备名称	规格型号	数量 (台)	设备性能
14	数显落地镗床	T6216D/1	1	工作台工作面尺寸:2000×2500mm最大 加工孔径:750mm 平旋盘最大加工外圆直径:1000mm镗 杆直径:160mm
15	数控镗床	TK6113	1	镗杆直径:130mm
16	数显卧式镗床	TP6113	2	工作台工作面尺寸:1400×1600mm工作 台最大负重:8t,最大加工孔径:550mm, 镗杆直径:130mm
17	数显卧式镗床	T612A	1	工作台工作面尺寸:1600×1250mm工作 台最大负重:4t 镗杆直径:125mm
18	数显卧式镗床	TX611B	1	工作台尺寸:920×1120mm 最大负重:2t,镗杆直径:110mm
19	数显卧式镗床	TPX619	1	工作台尺寸:800×1000mm 最大负重:2t,镗杆直径:90mm

List of boring and Milling Equipment

Item	Equipment designation	Type	Qty	Characteristic of equipment
1	CNC Boring and Milling Machine	FB260/180	1	Machining L Max 18000mm Machining H max 8000 mm Stroke of Z-shaft 1700 mm Stroke of W-shaft 1600 mm Load-carrying Capacity of working Table 140t
2	CNC Console Boring and Milling Machine	FB225/2 matching TDV80/2 CNC rotary working platform	1	Diameter of spindle:Φ225mm working platform:3600×4000mm, Routing: X : 12000mm, Y :5000mm, Z: 1250mm,w:1200mm longitudinal routing of working platform:3000mm Max loading: 80t
3	CNC Horizontal Boring and Milling Machine	TK6516	1	Diameter of spindle:Φ160mm, Routing: X : 2000mm, Y :2000mm, Z: 1000mm, W:2000mm Max loading: 40t

Item	Equipment designation	Type	Qty	Characteristic of equipment
4	CNC Boring and Milling Machine	RAPIDZR/12.5 1600×1250×1600	1	Working platform:1250×1600mm Max loading of working platform: 12.5t Diameter of boring rod:Φ140mm
5	CNC Boring Machine	TK6916B/150×5 0	1	Machining L Max 15000 mm Machining H max 5000 mm Stroke of Z-shaft 1200 mm Stroke of W-shaft 1200 mm Load-carrying Capacity of working Table 45t
6	CNC Boring Machine	TK6916B/100×4 0	1	Machining L Max 10000 mm Machining H max 4000mm Stroke of Z-shaft 1200mm Stroke of W-shaft 1200 mm Load-carrying Capacity of working Table 45t

Item	Equipment designation	Type	Qty	Characteristic of equipment
7	CNC Boring Machine	TK6916B/60×30	1	Machining L Max 6000 mm Machining H max 3000 mm Stroke of Z-shaft 1200 mm Stroke of W-shaft 1200 mm Load-carrying Capacity of working Table 45t
8	CNC Adjustable Column Boring and Milling Machine	HB130	1	Working platform:1500×2000mm Max loading of working platform: 10t Diameter of boring rod:Φ130mm
9	CNC Horizontal Boring and Milling Machine	TKP6513	1	Working platform:1400×1600mm Routing: X : 3000mm, Y :1600mm, Z: 1600mm Max loading: 10t

10	DN Horizontal Boring and Milling Machine	TPX6111B/2	1	Diameter of boring rod of spindle:Φ110mm Routing: X : 1250mm, Y :1000mm Max loading: 2.5t
11	CNC Console Boring Machine	FB225*12 (2. 3)	1	Diameter of boring rod of spindle:Φ225mm Routing: X : 12000mm, Y :5000mm Z: 1250mm,W: 1200mm Loading of platform: 20t/m2 Working platform:3600×4000mm
12	ND Horizontal Boring Machine	SKODA 200	1	Diameter of spindle:Φ200mm Routing : X : 6000mm, Y :3150mm Z: 1000mm, W:1600mm
13	CNC Console Boring Machine	TK6916A (2. 4)	1	Diameter of boring rod of spindle:Φ160mm Routing: X : 8000mm, Y :4000mm Z: 1200mm, W:1200mm Loading of working platform: 45t/m2 Loading of platform: 15t/ m2 Working platform:3000×3000mm

Item	Equipment designation	Type	Qty	Characteristic of equipment
14	ND Horizontal Boring Machine	T6216D/1	1	Dimension of working platform: 2000×2500mm Max diameter of machining: Φ750mm Max outside diameter of machining: Φ1000mm Diameter of boring rod of spindle:Φ160mm
15	CNC Boring Machine	TK6113	1	Diameter of boring rod :Φ130mm
16	ND Horizontal Boring and Milling Machine	TP6113	2	Dimension of working platform: 1400×1600mm Max loading of working platform: 8t Max diameter of machining: Φ550mm Diameter of boring rod :Φ130mm
17	ND Horizontal Boring and Milling Machine	T612A	1	Dimension of working platform: 1600×1250mm Max loading of working platform: 4t Diameter of boring rod :Φ125mm
18	ND Horizontal Boring and Milling Machine	TX611B	1	Dimension of working platform: 920×1120mm Max loading : 2t, diameter of boring rod :Φ110mm
19	ND Horizontal Boring and Milling Machine	TPX619	1	Dimension of working platform: 800×1000mm Max loading : 2t, diameter of boring rod :Φ90mm



数控立式车床 CKX53150-1 （最大加工直径:15.8m）
CNC Vertical Lathe CKX53150-1 （ Max diameter of machining:15.8m）



数控立式车床CK53100-1（最大加工直径:10m）
CNC Vertical Lathe CK53100-1（Max diameter of machining: 10m）



数控立式车床 CKX5263 (最大加工直径 6.3m)

CNC Vertical Lathe CKX5263 (Max diameter of machining: 6.3m)



WETA 2.5m 数控立式车床 TG20/2500 (最大加工直径: 2.5 m)

WETA 2.5m CNC Vertical Lathe TG20/2500 (Max diameter of machining: 2.5m)

立式车床类设备一览表

序号	设备名称	规格型号	数量 (台)	设备性能
1	数控立式车床	CKX53150-1	1	最大加工直径:15.8m 工作台尺寸: Φ7.2 m 最大加工高度:6.3 m 最大承重:250t
2	数控立式车床	CKJQ52100	1	最大加工直径:10m 工作台尺寸: Φ7.1 m 最大加工高度:4.0 m 最大承重:150t
3	数控立式车 床	CKX5263	1	最大加工直径 6.3m 最大加工高度 4.0 m 工作台最大承重 160 t
4	数控立式车床	TG20/2500	1	工作台直径: 2.0m 最大加工直径: 2.5 m 最大加工高度:1.4 m

序号	设备名称	规格型号	数量 (台)	设备性能
5	立式车床	C5235	1	最大加工直径：3.5m 最大加工高度：2.0 m 工件最大重量：30t
6	立式车床	C5116A	1	最大加工直径：1.6m 最大加工高度：1.0 m

List of Turning Equipment

Item	Equipment designation	Type	Qty	Characteristic of equipment
1	CNC Vertical Lathe	CKX53150-1	1	Max diameter of machining:15.8m Working platform:Φ7.2 m Max machining height:6.3 m Max loading:250t
2	CNC Vertical Lathe	CKJQ52100	1	Max diameter of machining: 10m Working platform:Φ7.1 m Max machining height:4.0 m Max loading:150t

Item	Equipment designation	Type	Qty	Characteristic of equipment
3	CNC Vertical Lathe	CKX5263	1	Max diameter of machining: 6.3m Turning H max 4000 mm Load-Carrying Capacity of working Table 160t
4	CNC Vertical Lathe	TG20/2500	1	Working platform: Φ2.0 m Max diameter of machining: 2.5 m, Max machining height:1.4 m
5	Vertical Lathe	C5235	1	Max diameter of machining: 3.5m, Max machining height:2.0 m Max weight of a part: 30t
6	Vertical Lathe	C5116A	1	Max diameter of machining: 1.6m, Max machining height:1.0 m



2800x18000mm 数控卧式车床
2800x18000mm CNC Horizontal Lathe



数控卧式车床 CQ61250 (最大加工直径:2500mm)

CNC Horizontal Lathe C61250 (Max machining diameter:2500mm)

大型车床类设备一览表

序号	设备名称	规格型号	数量 (台)	设备性能
1	数控 卧式车床	2800x18000	1	最大加工直径:2800mm 最大加工长度:18000mm
2	数控 卧式车床	CQ61250	1	最大加工直径:2500mm 最大加工长度:10000mm
3	数控 重型车床	C61125B 1250×18000	1	最大加工直径:1250mm 在刀架上加工最大直径:900mm 加工最大长度:18000mm
4	重型车床	SHZ1043	1	最大加工直径:1250mm 在刀架上加工最大旋转直径: Φ800mm, 加工最大长度:17000mm

序号	设备名称	规格型号	数量 (台)	设备性能
5	重型车床	T2-019	1	最大加工直径：1250mm 在刀架上加工最大直径： Φ 800mm 加工最大长度：16000mm
6	卧式车床	C61100/1	2	最大加工直径：1000mm 在刀架上加工最大直径：630mm 一台加工最大长度：3000mm 另 一台加工最大长度：9000mm
7	数控车床	CAK6180B	1	最大加工直径：800mm 最大加工长度：1500mm
8	数控车床	CKA6763/1500	2	最大加工直径：630mm 最大加工高度：1500mm
9	数控车床	CKA6150/1500	1	最大加工直径：500mm 最大加工高度：1500mm

List of Turning Equipment

Item	Equipment designation	Type	Qty	Characteristic of equipment
1	CNC Horizontal Lathe	2800x18000	1	Max machining diameter:2800mm Max machining length:18000mm
2	CNC Horizontal Lathe	C61250	1	Max machining diameter:2500mm Max machining length:10000mm
3	CNC Heavy-duty Lathe	C61125B 1250×18000	1	Max machining diameter:1250mm, Max machining diameter on the carriage:900mm Max machining length:18000mm

Item	Equipment designation	Type	Qty	Characteristic of equipment
4	Heavy-duty Lathe	SHZ1043	1	Max machining diameter: 1250mm, Max machining diameter on the carriage : 800mm, Max machining length:17000mm
5	Special used Lathe	T2-019	1	Max machining diameter: 1250mm, Max rotary machining diameter on the carriage : 800mm Max machining length:16000mm
6	Horizontal Lathe	C61100/1	2	Max machining diameter:1000mm Max machining diameter on the carriage : 630mm Max machining length: 3000mm&9000mm

Item	Equipment designation	Type	Qty	Characteristic of equipment
7	CNC Lathe	CAK6180B	1	Max machining diameter:800mm Max machining length:1500mm
8	CNC Lathe	CKA6763/1500	2	Max machining diameter: 630mm, Max machining height:1500mm
9	CNC Lathe	CKA6150/1500	1	Max machining diameter: 500mm, Max machining height:1500mm



赛瑞机器
SERI Machinery



便携式Arm P6型三坐标测量臂和Faro XI 型激光跟踪仪（美国FARO公司）
Portable Arm P6 Three Coordinate Measuring Arm & Faro XI laser Tracing
Device (FARO Company, USA)



三维坐标测量仪
Three Coordinate Measuring Apparatus



梅赛尔数控火焰切割机
MESSER CNC Flame Cutting Machine

切割、剪板类设备一览表

序号	设备名称	规格型号	数量 (台)	设备性能
1	数控火焰切割机	梅塞尔7000*20000	1	火焰切割最大能力： 厚300mm, 宽7000mm 长20000mm
2	数控火焰切割机	SKG-3型 4*10M	3	最大切割面积： 4000×10000mm
3	空气等离子切割机	LGK-8-100TSM1	3	额定输出电流100A, 最大切割 板厚: 低碳钢: 40mm, 不锈钢: 10mm, 铝: 32mm, 铜: 10mm
4	矫平横切、纵切生 产线	8-25/8-12*2500	1	矫平、剪切能力: 最大板厚 25mm, 最大宽度: 2500mm
5	剪板机	Q12Y-16*2500	1	剪板最大厚度: 16mm 剪板最大宽度: 2500mm
6	剪板机	Q11-6*2500	1	剪板最大厚度: 6mm 剪板最大宽度: 2500mm

List of Cutting Machine

Item	Equipment designation	Type	Qty	Characteristic of equipment
1	CNC Flame Cutting Machine	MESSER 7000*20000	1	Max capacity of flame cutting: thickness 300mm, wideness 7000mm, length 20000mm
2	CNC Flame Cutting Machine	SKG-3 4*10M	3	Max cutting area:4000×10000mm
3	Cutting Torch Plasma	LGK-8-100TSM1	3	Rating output current: 100A Max thickness of cutting: carbon: 40mm stainless steel: 10mm Aluminum: 32mm,copper: 10mm
4	Straighten - flattening and cutting production line	8-25/8-12*2500	1	Capacity of straighten-flattening and cutting: Max thickness: 25mm Max wideness: 2500mm
5	Plate Cutting Machine	Q12Y-16*2500	1	Max thickness of cutting: 16mm Max wideness of cutting :2500mm
6	Plate Cutting Machine	Q11-6*2500A	1	Max thickness of cutting : 6mm Max wideness of cutting :2500mm



三辊卷板机（最大卷板厚度：100 mm）

Three Roller Plate Bending Machine (Max thickness of bended plate: 100mm)

成型类设备一览表

序号	设备名称	规格型号	数量 (台)	设备性能
1	三辊卷板机	SERI-JBJ-100	1	最大弯板厚度:100mm 最大宽度: 4000mm
2	三辊卷板机	SERI-JBJ-40	1	最大弯板厚度: 40mm 最大宽度: 2500mm
3	400t单柱压机	DY-400	1	最大压力: 400t
4	压力机	DST350	1	最大压力: 350t
5	300t压力机	300t	1	最大压力: 300t

序号	设备名称	规格型号	数量 (台)	设备性能
6	三辊弯板机	SERI-JBJ-20	2	最大弯板厚度：20mm最大宽度：2500mm
7	三辊卷板机	SERI-JBJ-12	1	最大弯板厚度：12mm最大宽度：2500mm
8	液压板料折弯机	WC67Y-160/4000	1	公称压力：1600KN 工作台长度：4000mm
9	型材卷弯机	W24A-160	1	最小弯曲直径：Φ450mm 可弯曲80×80×10角钢， Φ73×4.5钢管，型材最大抗弯截面模量16cm ²

List of Forming Machine

Item	Equipment designation	Type	Qty	Characteristic of equipment
1	Three Roller Plate Bending Machine	SERI-JBJ-100	1	Max thickness of bended plate: 100mm Max wideness: 4000mm
2	Three Roller Plate Scrolling Machine	SERI-JBJ-40	1	Max thickness of bended plate: 40mm Max wideness: 2500mm
3	400t Press	DY-400	1	Max pressure: 400t
4	Press	DST350	1	Max pressure: 350t
5	300tPress	300t	1	Max pressure: 300t

6	Three Roller Plate Scrolling Machine	SERI-JBJ-20	2	Max thickness of bended plate: 20mm Max wideness: 2500mm
7	Three Roller Plate Scrolling Machine	SERI-JBJ-12	1	Max thickness of bended plate: 12mm Max wideness: 2500mm
8	Hydraulic Plate Bending Machine	WC67Y-160/4000	1	Nominal pressure:1600KN Length of working platform:4000mm
9	Profile Bending Machine	W24A-160	1	Min bending diameter: Φ450mm, Angle iron 80×80×10 and pipe Φ73×4.5 can be bended. Max cross section simulation of profiled material: 16cm²



ESAB 自动埋弧焊接装置
ESAB Automatic Submerged Arc Welder

焊接设备一览表

序号	设备名称	规格型号	数量 (台)	设备性能
1	自动埋弧焊焊接装置	NZA-800~1000	2	焊接电流： 800A~1000A
2	埋弧焊机	NZA-1000	5	焊接电流：1000A
3	氩弧焊机	PPANA-TIG WP300	4	焊接电流：300A
4	氩弧焊机	TC200	10	焊接电流：200A
5	硅整流弧焊机	ZXG-400	10	焊接电流：400A 持续率：60%
6	交流弧焊机	BX1-500	43	焊接电流：500A 持续率：60%

7	数字焊机	350GBZ	6	焊接电流:30A ~350A 持续率: 60%	持
8	气体保护焊机	YD-500	45	焊接电流: 500A 持续率: 60%	
9	200t变位器	ZHB-200	1	承重: 200t 工作台直径:19000mm	
10	80t转台	GK-80	2	承重80t	
11	焊接操作机	CGX1/5X4	1	横梁垂直升降行程:5000mm 横梁水平伸缩行程:4000mm 立柱回转范:±1800mm	

List of Welding Equipment

Item	Equipment designation	Type	Qty	Characteristic of equipment
1	Automatic Submerged Arc Welding Device	NZA-800 1000	2	Welding current: 800~1000A
2	Submerged Arc Welder	NZA-1000	5	Welding current: 1000A
3	Argon-arc Machine	PPANA-TIG WP300	4	Welding current: 300A
4	Argon-arc Machine	TC200	10	Welding current: 200A
5	Silicon Rectifier Arc Welder	ZXG-400	10	Welding current: 400A Lasting rate: 60%
6	AC Welder	BX1-500	43	Welding current: 500A Lasting rate: 60%

7	Digital Welder	350GBZ	6	Welding current: 30~350A Efficacy: 60%
8	Gas arc Shielded Welder	YD-500	45	Welding current: 500A Efficacy: 60%
9	200t swivel Platform	ZHB-200	1	Loading: 200t, Diameter of working platform: 19000mm
10	80t swivel Platform	GK-80	2	Loading: 80t
11	Welding Operating Device	CGX1/5X4	1	Routing of raising and going down vertically of beam: 5000mm Routing of shrinkage and elongation horizontally of beam: 4000mm Rotating range of column: ± 1800mm



燃气台车退火炉

Gas-fired Car Bottom Type Annealing Furnace

序号	设备名称	规格型号	数量 (台)	设备性能
1	燃气台车退火炉	7800×12500×6000	1	炉膛尺寸:宽7800mm×长12500mm×高6000mm 炉膛最高温度: 960℃
2	燃气台车退火炉	5000×4200×2500	1	炉膛尺寸:宽5000mm×长4200mm×高2500mm 炉膛最高温度: 700℃
3	台车式电阻炉	NSP7-68	1	最大功率:220KW, 炉膛尺寸:2200×1500×1300mm 炉膛最高温度: 950 °C
4	台车式电阻炉	RTD-75-9	2	最大功率: 75KW, 炉膛尺寸:1800×900×750mm 炉膛最高温度: 850 °C
5	喷沙间	5000×4500×12000	1间	尺寸:5000×4500×12000mm
6	喷丸间	6000×6000×10000	1间	尺寸:6000×6000×10000mm
7	喷漆间	7000×6000×11000	1间	尺寸:7000×6000×11000mm

Item	Equipment designation	Type	Qty	Characteristic of equipment
1	Gas-fired Car Bottom Type Annealing Furnace	7800×12500×6000	1	Dimension of furnace: wideness 7800×length12500×height6000mm Temperature of furnace:960°C
2	Gas-fired Car Bottom Type Annealing Furnace	5000×4200×2500	1	Dimension of furnace: wideness 5000×length4200×height2500mm Temperature of furnace:700°C
3	Car Bottom Type Resistance Furnace	NSP7-68	1	Max power: 220kw Dimension (mm) of hearth: 2200×1500×1300 Max temperature: 950°C
4	Car Bottom Type Resistance Furnace	RTD-75-9	2	Max power: 75kw, dimension (mm) ofhearth:1800×900×750 Max temperature: 850°C
5	Sand Blasting Room	5000×4500×12000	1	Dimension: 5000×4500×12000
6	Sand Blasting Room	6000×6000×10000	1	Dimension: 6000×6000×10000
7	Panting Room	7000×6000×11000	1	Dimension: 7000×6000×11000



H型钢组对机
H - Sections Coupling machine



H型钢埋弧焊机
H - Sections Submerged-arc Welder



H型钢矫直机
Straightening machine for H-Section Steel

主要产品展示

Show of Our Main Products



炼钢连铸生产线
Continuous Casting Production Line of Steel



轧管生产线
Production Line of Rolling tubing



热处理生产线

Production Line of Heat treatment



冷轧薄板生产线

Cold rolling production line of thin steel plate



彩涂生产线

Production line of colored spreading



铜材连铸连轧生产线

Continuous casting & rolling production line of copper material



90吨钢包回转台
90t Rotary table of ladle



环形炉（直径35米）
φ35m Rotary Hearth Furnace



水压机
Hydraulic press



矫直机
Straightening machine



125吨桥式起重机

Bridge type crane (125t)



特种大型电机
Special large-scale electric motor



结晶器

Crystallization installment

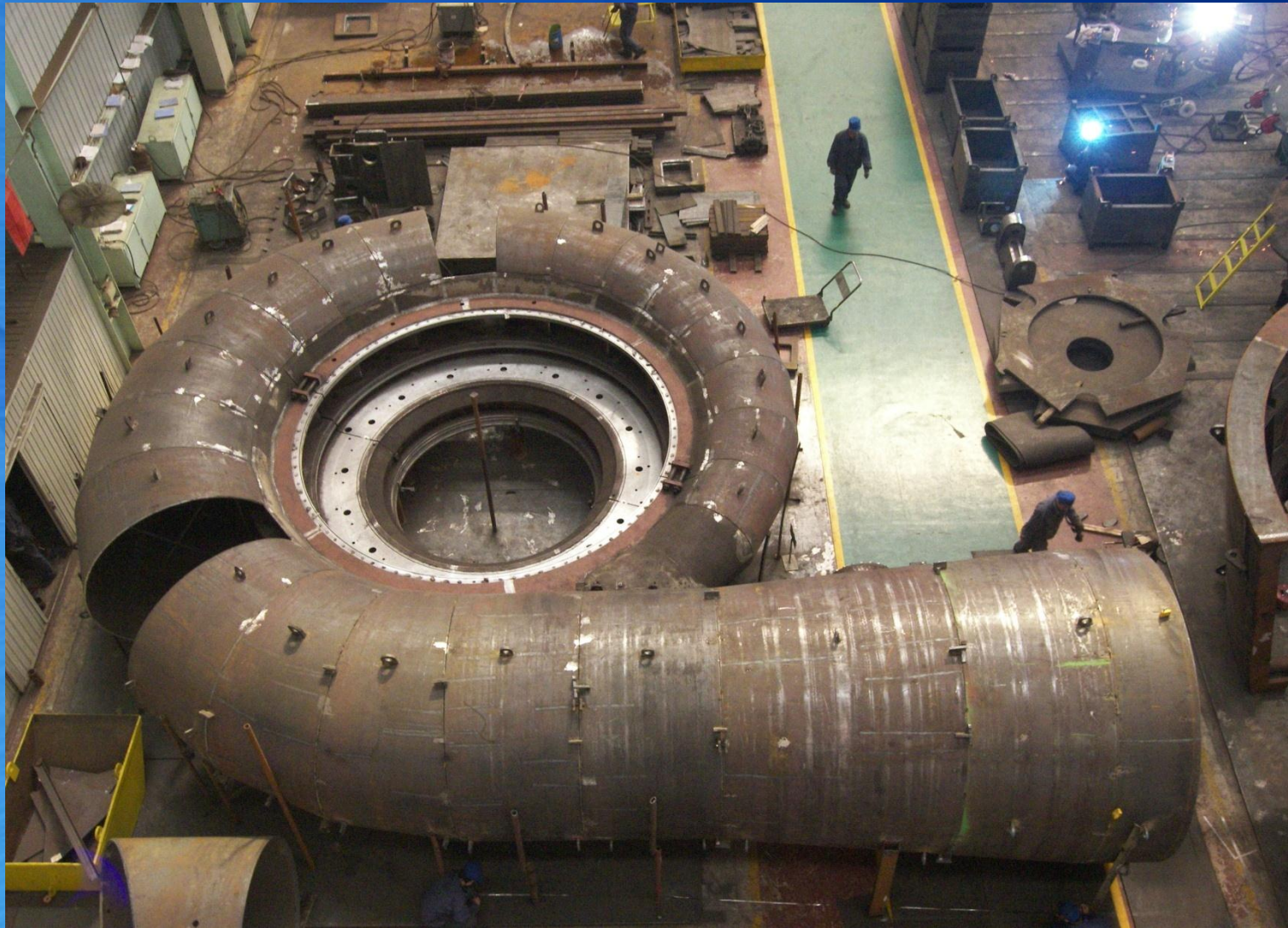


张力减径机架
Stretch reducing mill



冷轧管轧机

Cold rolling machine of steel pipe



蜗壳（印尼水电站项目）
Indonesia Hydro-Power Spiral Case



水轮机转轮体
Runner body of hydraulic turbine



定子机座（印尼水电站项目）
Indonesia Project Statov Baseframe



转轮室（铜湾水电站项目）
Tongwan Hydro-power Runner Housing



增速机机架（1500 kW 风力发电机）
Frame of Speed-up machine（1500 kW Wind-driven generator）



增速机机架（1500 kW 风力发电机）
Frame of Speed-up machine（1500 kW Wind-driven generator）



电机底座
Base Frame of Motor



定子支架
Stator Frame



A320 装配工装（欧洲空中客车公司）
A320 Stage of assembly (AIR BUS)

产品制造中依据的标准

The Standards
Used in Manufacturing

中国国家标准 (GB)

Chinese National Standard

中国冶金工业部标准 (YB)

Chinese Metallurgy Industrial Standard

中国机械工业部标准 (JB)

Chinese Mechanical Industrial Standard

ISO标准

ISO Standard

欧洲标准（ EN ）

European Standard

德国国家标准（ DIN ）

German Industrial Standard

法国国家标准（ NF ）

France National Standard

日本工业标准（ JIS ）

Japanese Industrial Standard

美国工业标准 (ANSI)

American National Standard Institute

美国钢铁工业标准 (AISI)

American Iron and Steel Institute

美国材料和试验协会标准 (ASTM)

American Society for Testing and Materials

美国机械工程师协会标准 (ASME)

American Society of Mechanical Engineers

美国焊接协会标准 (AWS)

American Welding Society

法国阿尔斯通公司 (ALSTOM) 标准

Standard of ALSTOM Company

美国通用电气公司 (GE) 标准

Standard of General Electric Company

必和必拓公司 (BHPB) 标准

Standard of BHPBILLITON Company

德国西马克集团 (SMS) 标准

Standard of SMS Group

日本石川岛播磨重工业株式会社 (IHI) 标准

Standard of IHI Group

德国洛伊公司 (LOI) 标准

Standard of LOI Company

意大利达涅利公司 (DANIELI) 标准

Standard of DANIELI Company

产品结构 (已制造的项目, 将要开发的项目)

----- 发电设备 (水力发电、风力发电)

----- 大型燃气轮机重要零部件

----- **BHPB 铝电解设备重要部件**

----- 冶金设备 (炼铁、炼钢、连铸、轧钢等)

----- 各种工业炉

----- **港口机械**

----- 大型轴类、箱体和大型结构件

----- 大型电机的制造和修理

----- 环保设备

PRODUCT STRUCTURE

(Project which has been done, **Project which will be developed**)

- Power generation equipment (hydroelectric Power, wind Power)
- Important parts for large-sized turbine machinery
- **Important parts for BHPB**
- Metallurgical equipment (iron-making, steelmaking, casting, rolling and so on)
- All kinds of industrial furnace
- **Machinery for seaport**
- Large sized shaft, case and large sized structural parts
- Manufacturing and repairing for large sized electric motor
- Equipment for environment protection

制造能力

月制造能力(焊接和机械加工)

5000 吨

单件制造的最大重量: 250 吨

MANUFACTURE CAPACITY

Per month (including welding and
mechanical machining):

5000t

Max. weight for one part: 250t



欢迎您再次访问赛瑞公司

WELCOME TO VISIT
TIANJIN SERI COMPANY AGAIN