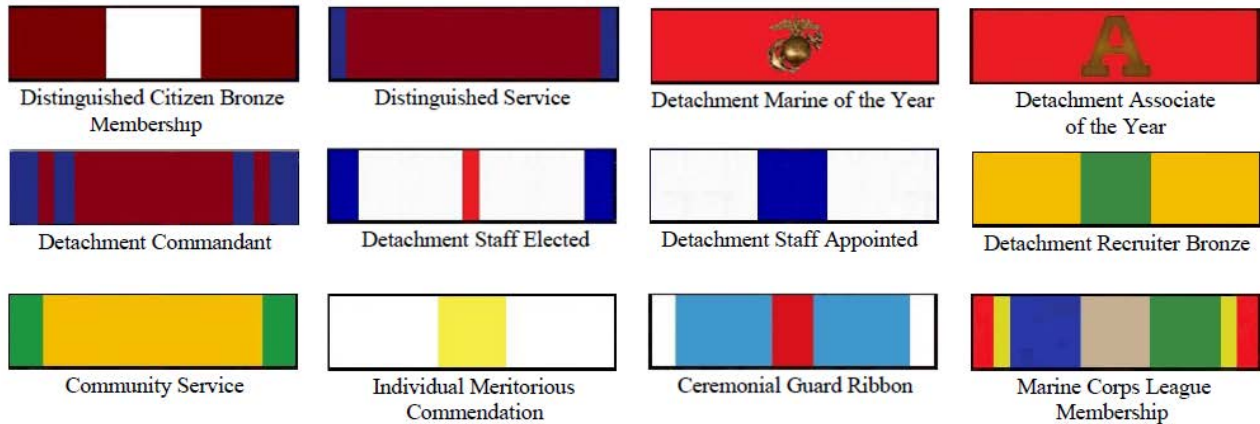


DETACHMENT LEVEL AUTHORIZED AWARDS

MARINE CORPS LEAGUE



SEE 2022 NATIONAL ADMINISTRATIVE PROCEDURES ENCLOSURE (4) FOR COMPLETE AWARD DOCUMENTATION

Distinguished Citizen Bronze: *(Marine or Associate Member)*

1. Criteria of Award: Awarded to the Detachment member who during the period of consideration has demonstrated by **leadership** and **performance** an **distinguished contribution** to the Detachment, Marine Corps League, and the Community whose personal conduct has reflected favorably on and has brought credit to the Detachment, Marine Corps League and the United States Marine Corps.
2. Awarded: Marine Corps Birthday Ball.

Detachment Marine of the Year / Detachment Associate Member of the Year

1. Criteria of Award: Awarded to the Detachment Marine / Associate Member who during the period of consideration has demonstrated by leadership and performance an **extraordinary contribution to the Detachment**, Marine Corps League, Community, and Nation. Whose personal conduct has reflected favorably on and has brought credit to the Detachment, Marine Corps League, and the United States Marine Corps.
2. Who has rendered service(s) and performed a deed (s) above and beyond the duties and obligations required of a member of the Marine Corps League.
3. Awarded: Marine Corps Birthday Ball.

Distinguished Service – Bronze: *(Marine or Associate Member)*

1. Criteria of Award: Awarded to the Detachment member who during the period of consideration has demonstrated by **leadership and performance a distinguished contribution to the Detachment**, Marine Corps League or the Community whose personal conduct has reflected favorably on and has brought credit to the Detachment, Marine Corps League and the United States Marine Corps.
2. Awarded: Awards Meeting.

Detachment Commandant: *(Marine Member Only)*

1. Period of performance for consideration: Installation as an Elected Officer or having served as Detachment Commandant.
2. Criteria of Award: Authorized upon Installation as Detachment Commandant or upon having served as Detachment Commandant.
3. Awarded: Officer Installation.

Detachment Officer (Elected per national & Detachment Bylaws): *(Marine Member Only)*

1. Period of performance for consideration: Installation as an Elected Officer or having served as an elected officer.
2. Criteria of Award: Authorized upon Installation as an elected Officer or upon having served as an elected Officer.
3. Awarded: Officer Installation.

Detachment Officer (Appointed to a None Elected Position): *(Marine or Associate Member)*

1. Period of performance for consideration: Installation as an Appointed Officer or having served as an appointed officer.
2. Criteria of Award: Authorized upon Appointment as an appointed Officer or upon having served as an appointed Officer.
3. Awarded: Officer Installation.

Detachment Recruiter(s) of the Year: *(Marine or Associate Member)*

1. Period of performance for consideration: 1 July through 30 June of the Subsequent Year.
2. Criteria of Award:
 3. Any member(s) who during the period 1 July through 30 June has fulfilled the requirements for Department MCL Recruiter Recognition-or-
 4. Any Member(s) who during the period 1 July through 30 June has fulfilled the requirements for National MCL Recruiter Recognition. -or-
 5. The Member who recruits the most new members or reinstated members during the period 1 July through 30 June. This recipient(s) shall be designated as the Detachment Recruiter of the Year.
3. Awarded: Awards Meeting

Community Service: *(Marine or Associate Member)*

1. Criteria of Award: Awarded to the Detachment member who during the period of consideration has demonstrated by **leadership and performance** a **significant contribution to the Community**. Whose personal conduct has reflected favorably on and has brought credit to the Detachment, Marine Corps League, and the United States Marine Corps.
2. Awarded: Awards Meeting.

Individual Meritorious Commendation: *(Marine or Associate Member)*

1. Criteria of Award: Awarded to the Detachment member who during the period of consideration has demonstrated by **leadership and performance** a **esteemed / significant contribution to the Detachment**, Marine Corps League, or the Community. Whose contributions have reflected favorably on and have brought credit to the Detachment, Marine Corps League, and the United States Marine Corps.
2. Awarded: Awards Meeting.

Marine Corps League Medal (Membership): *(Marine or Associate Member)*

1. Awarded to all Detachment members in good standing in the Marine Corps League.
2. Subsequent Awards for every Five Years of continuous membership in the Marine Corps League.

A MEANINGFUL AWARD PROGRAM UNIQUE TO THE MARINE CORPS LEAGUE

Though easy to disparage, awards are powerful motivators. U.S. Olympic sprinter Wilma Rudolph wrote “The feeling of accomplishment welled up inside of me, three Olympic gold medals. I knew that was something nobody could ever take away from me, ever.”

James Humes was a speechwriter for Eisenhower, Nixon, Ford and Reagan, specializing in ceremonial rather than policy speeches. In his book *The Sir Winston Method; the Five Secrets of Speaking the Language of Leadership*, awards.

- They encourage members in their pursuit of higher involvement in the organization
- They foster respect and appreciation for Marine Corps League traditions.
- They confer appropriate weight on the accomplishment itself.
- They engender camaraderie and esprit de corps in units.
- They help with recruitment and retention.
- They provide a venue for unit command to show their appreciation for their members.
- They are a source of pride and encouragement members.
- They mark important transition points in the life of an individual and an organization.
- They recognize individual achievement.

Notice that on this list of 10 reasons why awards and recognition ceremonies are important, only the last has to do with the awardee. All the others have to do with others. Awards and recognition ceremonies ultimately benefit the unit and other members more than they do the one receiving the award.

Criteria for Awards:

Specifically, the following criteria should be met for eligibility:

Leadership Excellence: The nominee must have displayed exceptional leadership qualities, including but not limited to inspiring and motivating fellow members, actively participating in Detachment activities, and fostering a sense of unity and purpose among members.

Performance Excellence: The nominee should have achieved outstanding results in their role or duties within the Detachment, demonstrating a commitment to excellence and a willingness to exceed expectations.

Contribution to the Detachment: The nominee should have made a substantial and measurable contribution to the Detachment's mission, goals, and initiatives. This could include organizing successful events, recruiting new members, or implementing innovative programs that benefit the Detachment.

Contribution to the Marine Corps League: The nominee should have actively supported and promoted the goals and values of the Marine Corps League. This may include participating in league activities, advocating for veterans' rights, or contributing to the overall success of the league.

Community Involvement: The nominee must have a proven record of involvement and positive impact within the local community. This could involve volunteering, charity work, or other forms of community service that reflect positively on the Detachment and the Marine Corps League.

Exemplary Personal Conduct: The nominee's personal conduct should consistently adhere to the highest ethical and moral standards. They should serve as a role model for other members, embodying the values and principles of the Marine Corps and the United States.

Recommendations: The nominee must be recommended by fellow Detachment members or leaders who can attest to their outstanding contributions, leadership, and conduct.

By incorporating these specific criteria, the award becomes more transparent and objective, making it easier to evaluate and select deserving recipients based on their tangible contributions and impact.

Distinguished Contribution to the Detachment:

A "**distinguished contribution**" to the Detachment represents an exceptional and noteworthy effort or achievement that significantly elevates the Detachment's mission, reputation, and standing within the Marine Corps League and the broader community. It embodies the following elements:

Elevating Prestige: The contribution should elevate the prestige and reputation of the Detachment within the Marine Corps League and the community, enhancing its recognition as a distinguished and influential entity.

Exceptional Commitment: The nominee's dedication and commitment to the Detachment's mission should be truly exceptional, setting them apart as a model of unwavering devotion.

Innovative Advancements: A distinguished contribution may involve introducing innovative advancements or transformative initiatives that have propelled the Detachment to new levels of achievement and influence.

Inspirational Leadership: Those making distinguished contributions often exhibit inspirational leadership qualities, serving as role models who inspire others to reach for excellence.

Enduring Legacy: The contribution should leave an enduring legacy within the Detachment, making a lasting impact that continues to benefit the Detachment's members and its mission over time.

National Recognition: A distinguished contribution may have received national recognition, awards, or accolades from the Marine Corps League or other relevant organizations, emphasizing its exceptional nature.

Tangible Outcomes: Whenever possible, the impact of the contribution should be quantifiable, providing concrete evidence of the significant advancements achieved within the Detachment.

Alignment with Detachment's Mission and Values: The contribution should align seamlessly with the Detachment's mission, values, and long-term objectives, actively advancing its core purpose and principles.

Selflessness and Sacrifice: Distinguished contributions often involve selfless acts and personal sacrifices made for the betterment of the Detachment and its members.

Exceptional Service Record: The nominee's service record should reflect consistent and exceptional contributions that exceed typical expectations, demonstrating a profound commitment to the Detachment's welfare.

By incorporating these elements, a "**distinguished contribution to the Detachment**" becomes a highly distinguished and discernible category within the award criteria. It ensures that the award is reserved for individuals who have made extraordinary and enduring contributions that significantly enhanced the Detachment's stature, mission, and influence.

Extraordinary Contribution to the Detachment:

An "**extraordinary contribution**" to the Detachment is a remarkable and exceptional effort or achievement that significantly enhances the Detachment's mission, cohesion, and effectiveness. It encompasses the following elements:

Transformative Impact: The contribution should have a transformative impact on the Detachment, leading to substantial improvements, growth, or positive changes in its operations, morale, or effectiveness.

Sustained Dedication: The nominee's effort should reflect sustained dedication and unwavering commitment to the Detachment's goals and objectives over an extended period, demonstrating their long-term devotion.

Innovative Solutions: An extraordinary contribution may involve the introduction of innovative solutions, strategies, or initiatives that have revolutionized how the Detachment operates or how it serves its members and the community.

Exceptional Leadership: Those making extraordinary contributions often exhibit exceptional leadership qualities, motivating, guiding, and inspiring fellow Detachment members to achieve exceptional results.

Long-Lasting Legacy: The contribution should leave a long-lasting and enduring legacy within the Detachment, benefiting current and future members, and contributing to the Detachment's sustained success.

Recognition and Awards: An extraordinary contribution may have received national or regional recognition, awards, or commendations from the Marine Corps League or other relevant organizations, highlighting its significance.

Quantifiable Outcomes: Whenever possible, the impact of the contribution should be quantifiable, providing concrete evidence of the improvements or advancements achieved within the Detachment.

Alignment with Detachment's Mission: The contribution should align seamlessly with the Detachment's mission, values, and objectives, actively advancing its purpose and goals.

Selflessness and Sacrifice: Extraordinary contributions often involve selfless acts and personal sacrifices made for the Detachment's and its members' betterment.

Exceptional Service: The nominee's service should consistently go above and beyond the call of duty, demonstrating a willingness to invest significant time, effort, and resources for the Detachment's benefit.

By incorporating these elements, "**extraordinary contribution to the Detachment**" becomes a well-defined and distinguished category within the award criteria. It ensures that the award recognizes individuals who have made exceptional and enduring contributions to the Detachment's success and mission.

Outstanding Contribution:

An "outstanding contribution" for the purpose of this award refers to a remarkable and noteworthy effort or achievement that significantly benefits the Detachment, Marine Corps League, and the Community. It encompasses the following elements:

Impact: The contribution should substantially and positively impact the Detachment, Marine Corps League, and the local community. It should be measurable and demonstrable, resulting in meaningful improvements or advancements.

Dedication: The nominee's effort should reflect high dedication and commitment. They should consistently exceed their regular responsibilities or duties to make a difference.

Innovation: An outstanding contribution may involve the introduction of innovative ideas, strategies, or initiatives that enhance the effectiveness or reach of the Detachment, Marine Corps League, or community outreach programs.

Leadership: Those making outstanding contributions often demonstrate leadership qualities, inspiring and mobilizing others to join in their efforts and amplifying the positive impact.

Sustainability: The contribution should not be a one-time effort but should have a lasting and sustainable effect, ensuring continued benefits in the future.

Recognition: The nominee's contribution may have received recognition or acknowledgment from peers, leaders, or the community at large, underscoring its significance.

Measurability: Whenever possible, the impact of the contribution should be quantifiable or backed by specific evidence, such as increased participation, improved outcomes, or enhanced community well-being.

Alignment with Values: The contribution should align with the values and mission of the Detachment, Marine Corps League, and the principles upheld by the United States Marine Corps.

Selflessness: Outstanding contributions often involve selfless acts prioritizing the well-being of the Detachment, Marine Corps League, and the community over personal gain.

By considering these elements, "**outstanding contribution**" becomes more clearly defined and easier to evaluate, ensuring the award recognizes individuals who have made significant and enduring positive impacts.

In the context of awards, the phrase that typically denotes a higher and more prestigious award is "Distinguished Contribution."

Here's the hierarchy in terms of prestige:

Distinguished Contribution: This phrase implies the highest level of recognition for an exceptional and noteworthy contribution. It suggests that the recipient has made an outstanding and lasting impact.

Extraordinary Contribution: This phrase signifies a significant and remarkable contribution, but it may not have the same prestige level as "Distinguished Contribution." It still recognizes outstanding achievements.

Outstanding Contribution: While an "Outstanding Contribution" is certainly commendable, it is generally considered to be one step below "Extraordinary" and "Distinguished." It acknowledges noteworthy contributions but may not imply the same level of uniqueness or exceptional impact.

Meritorious Contribution: "Meritorious Contribution" recognizes commendable and praiseworthy contributions but is typically associated with recognition for notable achievements rather than the higher level of award.

Significant Contribution: "Significant Contribution" recognizes that the contribution is notable and meaningful but may not convey the same level of prestige as "Distinguished" or "Extraordinary."

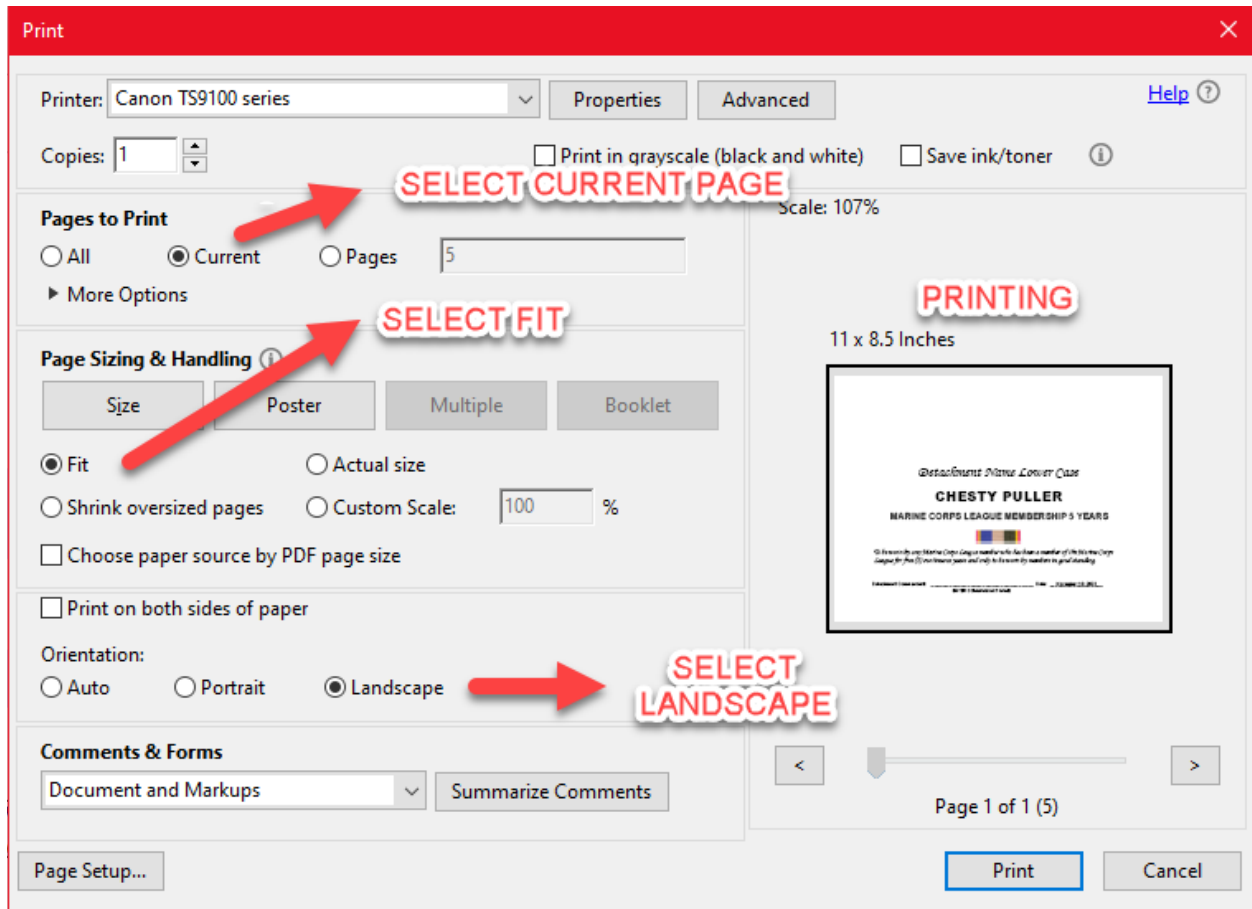
Esteemed Contribution: "Esteemed Contribution" acknowledges that the contribution is held in high regard and respected, but it may not necessarily imply the highest level of award.

Appreciation Certificate: is typically a recognition or honor given to individuals, groups, or organizations as a gesture of gratitude and acknowledgment for their contributions, efforts, or support. While it is a meaningful and appreciated form of recognition, it may not necessarily imply the same level of prestige or distinction as awards with terms like "Distinguished," "Extraordinary," or "Outstanding" in their titles.

The "Appreciation Award" is often given to express appreciation and thanks, and its significance may vary depending on the context and the organization presenting it. It is more about expressing gratitude and acknowledging someone's contributions rather than ranking or rating their achievement level within the Marine Corps League Award Program.

Heroism refers to the qualities, actions, or behavior of individuals who demonstrate exceptional courage, bravery, and selflessness in the face of danger, adversity, or challenging circumstances to themselves. Heroes are individuals who go above and beyond the call of duty to protect others, save lives, make significant sacrifices for the greater good, and prioritize the well-being of others above their own interests.

CERTIFICATE PRINTER SET-UP





To be worn by any Marine Corps League member who has been a member of the Marine Corps League for five (5) continuous years and only to be worn by members in good standing.

Detachment Commandant: _____ Date: _____



To be worn by any Marine Corps League member who has been a member of the Marine Corps League for ten (10) continuous years and only to be worn by members in good standing.

Detachment Commandant: _____ Date: _____



To be worn by any Marine Corps League member who has been a member of the Marine Corps League for fifteenth (15) continuous years and only to be worn by members in good standing.

Detachment Commandant: _____ Date: _____



To be worn by any Marine Corps League member who has been a member of the Marine Corps League for twenty (20) continuous years and only to be worn by members in good standing.

Detachment Commandant: _____ Date: _____



To be worn by any Marine Corps League member who has been a member of the Marine Corps League for twenty five (25) continuous years and only to be worn by members in good standing.

Detachment Commandant: _____ Date: _____



To be worn by any Marine Corps League member who has been a member of the Marine Corps League for thirty (30) continuous years and only to be worn by members in good standing.

Detachment Commandant: _____ Date: _____



To be worn by any Marine Corps League member who has been a member of the Marine Corps League for thirty five (35) continuous years and only to be worn by members in good standing.

Detachment Commandant: _____ Date: _____

DETACHMENT COMMUNITY SERVICE MEDAL



Awarded to a Marine Corps League Member who during the period of consideration has demonstrated by leadership and performance a significant contribution within the Community. Whose personal conduct has reflected favorably on and has brought credit to the Detachment, Marine Corps League, and the United States Marine Corps.

Detachment Commandant: _____ Date: _____

DETACHMENT DISTINGUISHED SERVICE MEDAL



Awarded to a Marine Corps League Member who during the period of consideration has demonstrated by leadership and performance a distinguished contribution within the Detachment. Whose personal conduct has reflected favorably on and has brought credit to the Detachment, Marine Corps League, and the United States Marine Corps.

Detachment Commandant: _____ Date: _____

INDIVIDUAL MERITORIOUS COMMENDATION



In appreciation and gratitude for meritorious service, Marine Corps League member who has distinguished themselves by esteemed leadership and achievement or service in the interests of the United States of America, the United States Marine Corps, and the Marine Corps League.

Detachment Commandant: _____ Date: _____

DETACHMENT DISTINGUISHED CITIZEN BRONZE MEDAL



Awarded to a Marine Corps League Member who during the period of consideration has demonstrated by leadership and performance an outstanding contribution within the Community and the Detachment. Whose personal conduct has reflected favorably on and has brought credit to the Detachment, Marine Corps League, and the United States Marine Corps.

Detachment Commandant: _____ Date: _____

MARINE OF THE YEAR

Authorized to wear the Marine Corps League Distinguished Citizen Bronze Medal

The Marine of the Year Award is one of the highest honors that can be bestowed upon a Marine member of General Larry Oppenheimer Detachment. The candidates for this award are a Marine who stands out above all others, a Marine member who is always willing to roll up his or her sleeves to do that tough job; the Marines of the detachment use this award to recognize that special Marine Corps League Member.

Detachment MOY Society Chairman: _____

DETACHMENT RECRUITER BRONZE MEDAL



It is awarded to a Marine Corps League Member who has demonstrated leadership, individual performance, and outstanding contribution in recruiting new members during this period of consideration. Whose personal conduct has brought recognition and awareness of the Marine Corps League to the community and reflected favorably on the Detachment, Marine Corps League, and the United States Marine Corps.

Detachment Commandant: _____ Date: _____

CEREMONIAL GUARD RIBBON



Detachment Commandant: _____ Date: _____

ASSOCIATE MEMBER OF THE YEAR

The Associate Member of the Year Award is the highest honor that can be bestowed upon an Associate Member of General Larry Oppenheimer Detachment. The candidates for this award are a Associate Member who stands out above all others, an Associate Member who is always willing to roll up his or her sleeves to do that tough job; the Marines of the detachment use this award to recognize that special Associate Member.

Detachment MOY Chairman: _____

Detachment Commandant: _____

CERTIFICATE OF APPRECIATION

*For Loyalty and Patriotism to Our Country as exemplified by Publicly
and Proudly Displaying the United States Flag.*



Detachment Commandant: _____

Date: _____

Detachment Commandant: _____

Date: _____



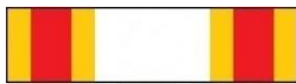
Detachment Commandant: _____

Date: _____



MARINE CORPS LEAGUE RIBBONS

SHOWN IN ORDER OF PRECEDENCE



Heroism



Distinguished Citizen Gold



Distinguished Citizen Silver



Distinguished Citizen Bronze



Distinguished Service



National Marine of the Year



National Associate of the Year



Division Marine of the Year



Division Associate of the Year



Department Marine of the Year



Department Associate of the Year



Detachment Marine of the Year



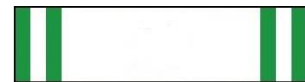
Detachment Associate of the Year



National Recruiter Gold



National Recruiter Silver



National Recruiter Bronze



Past National Commandant



National Staff Elected



National Staff Appointed



Department Commandant



Department Staff Elected



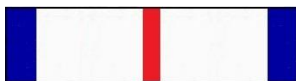
Department Staff Appointed



Department Recruiter - Silver



Detachment Commandant



Detachment Staff Elected



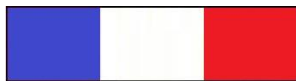
Detachment Staff Appointed



Detachment Recruiter Bronze



Community Service



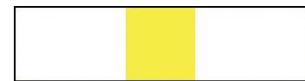
Board of Trustees Commendation
Victor T Fisher



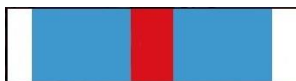
National Unit Commendation



Department Unit Commendation



Individual Meritorious
Commendation



Ceremonial Guard Ribbon



Marksmanship Rifle Ribbon



Marksmanship Pistol Ribbon



Kennel Dog of the Year



Chief Devil Dog Commendation
Individual



Pack Dog of the Year



Pack Leader Commendation
Individual



Pound Dog of the Year



Pound Keeper Commendation
Individual



Past Chief Devil Dog



Past Pack Leader



Past Pound Keeper



Marine Corps League
Membership