

19

88

AVION

BY FLEETWOOD



**Sandy Rexroth**  
Assistant Sales Manager



Ame

l Trailer

*Fleetwood Travel Trailers of Nebraska, Inc.*  
13737 Industrial Road, P.O. Box 37638  
Omaha, Nebraska 68137  
(402) 895-1850





The 1988 Avion is the epitome of livability. Throughout, tasteful furnishings and proven floor plans contribute to fun, relaxation and the joy of long-term vacations. The classic cherry finished woodwork and brass hardware make a statement of all-American, through and through.





All Avion models are equipped with a large tub/shower for personal convenience and comfort. A cast-in shower seat is included. The bath vanity countertop is covered with self-edged high-impact marble finish laminate for durability and elegance. A residential quality single-mix faucet is standard.



The front overhead cabinet contains the AM/FM/Cassette stereo tuner. The tuner is equipped with "seek and scan" and is all electronic. Four 2-way speakers are included in the sound system. Cassette tape library trays are spring loaded for safe tape storage.



The TV table is designed for the contemporary, portable TV. The shelf recesses out of the way when not in use (in select models). TV antenna and wiring for the park cable TV coaxial cable is standard.



Residential lighting is contributed by the new reading lamp. It's portable and may be used throughout the Avion.



Depending upon the model, Avion travel trailers are available with double, queen or twin beds as shown. The Sealy® mattress is standard equipment.



The optional convection/microwave oven provides total versatility for the chef. With this accessory, an additional overhead storage cabinet is provided.



Fluorescent lighting is included beneath selected overhead cabinets. Underneath the cabinets, the white surface reflects light downward.



Avion's galley reflects careful planning with its large, overhead storage cabinets. The double bowl residential quality porcelain sink is equipped with single mix faucet plus purified fresh water dispenser. A four burner LPG range/oven and Magic Chef® electronic "Touch Control" microwave oven are standard. Shown is the optional 4-burner cooktop and deluxe convection/microwave oven.





The magazine rack (in all dinette models) provides ideal storage for map books, tour guides and frequently read periodicals.

You'll dine in total comfort while seated on the 5" thick Superfoam cushions. Upholstery is Scotchgard® protected for durability and easy maintenance. Beneath each seat, a generous storage compartment for less frequently used items. Flex-O-Lator springs and hardware provide residential comfort plus 2-position seating for dining or relaxing.

Nationally known products within Avion include: Magic Chef®, Dometic®, Scotchgard®, Flexsteel®, Suburban®, Sealy®, Armstrong®, Wilsonart®, Delta® and Griffgard®.



Both the dining table and galley tops are trimmed with wood to enhance the quality interior in the 1988 Avion.

# Avion Model Selections



(1)



(2)



## MODEL 30P

This mid-size model offers excellent towing characteristics and livability. HIGHLIGHTS — front living room also offers very comfortable dining as well as guest sleeping capability. Rear bath and center bedroom can be made totally private. Note the abundant wardrobe space in the bath. Options (1) double bed (2) front Magic Bed®.



(1)



## MODEL 34V

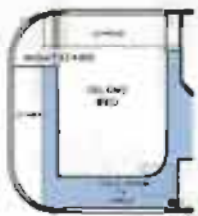
This traditional plan offers three distinct living areas. HIGHLIGHTS — the Magic Bed® converts for guest and family sleeping. The living room can be made night-time private with the folding wooden door. Abundant wardrobe storage is found throughout. Options (1) double bed (2) front Magic Bed®.



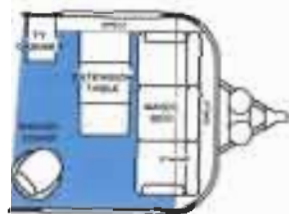
(2)

## MODEL 32S

This model offers numerous owner benefits. HIGHLIGHTS — center living room offers "at home" welcome to friends. Front galley and dinette provides for private dining or separate entertaining. Bath and bedroom can be made totally private with the folding, wooden door. Option (1) double bed.



(1)



(1)



**MODEL 34W**

This proven model offers four distinct living areas for the family. HIGHLIGHTS — large, convenient center wardrobe facility plus twin folding wooden doors outside the bath to create a private dressing area. Options (1) front Magic Bed® (2) double bed.

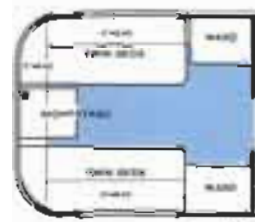


(2)



**MODEL 34X**

This new model has spacious living areas throughout. HIGHLIGHTS — intimate front living room and full walk-through bath with alternate privacy provisions; queen size bed. Option (1) twin beds.



(1)

# 1988 Avion Specifications & Equipment

	30P	32S	34V	34W	34X
<b>Weights, Measures</b>					
Length, including hitch	30'1"	32'7"	34'11"	34'11"	34'11"
Width	7'11"	7'11"	7'11"	7'11"	7'11"
Height (including roof air)	10'0"	10'0"	10'0"	10'0"	10'0"
GVWR - lbs.	8,500	8,550	9,500	9,500	9,500
Gross dry weight - lbs.	5,840	6,100	7,025	6,575	5,880
Hitch dry weight - lbs.	130	230	765	720	620
<b>Seating/Sleeping</b>					
Rowette capacity	4	6	6	6	6

	30P	32S	34V	34W	34X
<b>Storage (Cont'd.)</b>					
Below floor storage (exterior)	•	•	•	•	•
Magic Bed® storage	•	—	•	•	•
<b>Electrical</b>					
Dual 12V battery container	•	•	•	•	•
50 amp recirc center — 110V/12V w/cord	•	•	•	•	•
Utility compartment 110V outlet	•	•	•	•	•
30' heavy duty 110V shore line	•	•	•	•	•

	30P	32S	34V	34W	34X
<b>Interior (Cont'd.)</b>					
Folding room dividers (bedroom/hall only)	•	•	•	•	—
Free standing chair (qty)	2	1	2	2	—
Bedspreads & pillow shams	•	•	•	•	•
<b>Exterior</b>					
Anodized aluminum skin	•	•	•	•	•
Adjust-A-Ride® suspension	•	•	•	•	•
Heavy duty rear bumper	•	•	•	•	•

Slide bed size	—	48x76	—	—	—
Twin bed size — Sealy®	32x77	32x76	32x77	32x76	32x76
Double bed size — Sealy® (optional)	48x77	54x76	48x77	54x76	—
Queen bed size — Sealy®	—	—	—	—	60x80
Magic Bed®	•	—	•	•	•

Galley					
Refr w/2-way LP/110V (size)	Lgn	Lgn	Lgn	Lgn	Lgn
Range — DLX 4 burn w/ig. oven & light	•	•	•	•	•
Electronic Touch Control Microwave Oven	•	•	•	•	•
Range hood (power)	•	•	•	•	•
Sink — porcelain 18" x 32"	•	•	•	•	•
Delta® single lever faucet	•	•	•	•	•
Galley top — laminate w/hardwood edge	•	•	•	•	•
Everpure™ water purifier	•	•	•	•	•
Sink cover — hardwood (2)	•	•	•	•	•
Galley window w/mini blind	•	•	•	•	•
Spice cabinet	•	•	•	•	•
Pull-out towel bar	•	•	•	•	•
Spice rack (2)	•	•	•	•	•
Range cover — stainless steel	•	•	•	•	•

Bath					
Tub with seat	•	•	•	•	•
Sink (porcelain)	•	•	•	•	•
Telephone shower head w/shut-off	•	•	•	•	•
Toilet marine (w/water saved)	•	•	•	•	•
Lighted medicine cabinet	•	•	•	•	•
Mirrored wardrobe doors	•	—	•	—	•
Shower curtain	•	•	•	•	—
Towel bar and ring	•	—	•	—	•
Bath window w/mini blind	•	•	•	•	•
Hampers w/removable laundry bag	•	•	•	•	•
Folding Tub Enclosure	—	—	—	—	•

Storage					
Pantry (w/slide-out bins)	•	•	•	•	•
Cabinet door — hollow core — Birch	•	•	•	•	•
Hinges w/struts (overhead)	•	•	•	•	•
Positive catches	•	•	•	•	•
Wooden drawers w/Accuride slides and Hixon travel lock	•	•	•	•	•
Dovetail drawer construction	•	•	•	•	•
Mortise and tenon cabinet construction	•	•	•	•	•
Cedar lined wards	•	•	•	•	•
Wardrobe w/shelf	•	•	•	•	•
Dinette base storage area	—	•	•	•	•
Dinette magazine rack	—	•	•	•	—
Sofa base storage area	—	•	—	—	—
Exterior trunk and door	•	•	•	•	•

Monitor panel with 12V kill switch	•	•	•	•	•
Walkway night lights	•	•	•	•	•
Decorative lights — wall mount 12V	—	•	—	•	•
Braund T.V. antenna**	•	•	•	•	•
Park cable TV hookup	•	•	•	•	•
AM/FM stereo w/two-way speakers	•	•	•	•	•
Back-up lights	•	•	•	•	•
12V porch light	•	•	•	•	•
12V interior entry light	•	•	•	•	•
Went lights	•	•	•	•	•
Telephone jack	•	•	•	•	•

Water/Drain System					
Fresh water capacity (gals.)	65	65	65	65	65
Waste water capacity (gals.)	40	40	40	40	40
Grey water capacity (gals.)	30	30	30	30	30
12V demand water system	•	•	•	•	•
Electronic ignition water heater (gals.)	6	6	6	6	6
Water tank by-pass fill	•	•	•	•	•
Adjustable water regulator	•	•	•	•	•
Galley faucet w/hand sprayer	•	•	•	•	•

Heating/Ventilation					
Ducted furnace w/thermostat (BTU)	30M	34M	34M	34M	34M
Residential ducting	•	•	•	•	•
Radius torque windows — tinted safety glass	•	•	•	•	•
Hammond power roof vents — 2-speed (qty.)	3	3	3	3	3
13.5M BTU Roof A/C w/heat strip	•	•	•	•	•
Picture window in living room	•	•	•	•	•

Safety					
Fire extinguisher	•	•	•	•	•
QFI protection	•	•	•	•	•
Emergency egress	•	•	•	•	•
Radius corner countertops	•	•	•	•	•
Radius corners on entry steps and rockguard	•	•	•	•	•
Dead bolt lock	•	•	•	•	•
Flush door latch	•	•	•	•	•
Entry assist handle	•	•	•	•	•

Interior					
Galley top side splash	•	—	•	•	•
Upholstered dinettes	—	•	•	•	•
Flex-o-lator dinette seating	—	•	•	•	•
Heavy vinyl walls	•	•	•	•	•
5" Dacron wrapped cushions	•	•	•	•	•
Lined drapery w/mini blind	•	•	•	•	•
Drapery valances	•	•	•	•	•
Carpet (removable)	•	•	•	•	•
All wood cabinets	•	•	•	•	•

*Thermo-X™ insulation	•	•	•	•	•
Electric brakes — all wheels	•	•	•	•	•
Insulated sandwich subfloor	•	•	•	•	•
Stabilizing jacks front/rear	•	•	•	•	•
12V power hitch jack	•	•	•	•	•
Dual LPG tanks — aluminum w/weight gauge (lbs.)	40	40	40	40	40
LPG bottle cover	•	•	•	•	•
2" x 6" tubular steel chassis*	•	•	•	•	•

## Options

016 Transit front wrap	•	•	•	•	•
021 Side awning	•	•	•	•	•
022 Window awning	•	•	•	•	•
121 Conv. Microwaves w/cooktop	•	•	•	•	•
236 Second Roof A/C	•	•	•	•	•
700 Deluxe aluminum wheels	•	•	•	•	•
800 Front Magic Bed®	•	—	•	•	—
837 Twin beds	—	—	—	—	•
848 Double bed	•	—	•	—	—
849 Island double bed	—	•	—	•	—

\*\*Jacks in bedroom and living room  
\*Includes additional 2" x 4" tubular steel reinforcement at load bearing points.

Product information and photography included in this flyer were as accurate as possible at the time of publication. Subsequent refinements may be evident in the actual product. Prices and specifications are subject to change without notice. Selected decorator items shown in the photographs are not part of the product unless specified. All fuel and liquid capacities are approximate and dimensions are nominal.




## Ownercare Warranty

Avion travel trailers are protected by a full, one-year Ownercare Warranty. It is Fleetwood's commitment to owner satisfaction. Your Avion dealer has complete details.





An all aluminum LPG tank cover protects the LP tanks from road hazards. The hinged ABS top allows for quick inspection of the visual gas reserve gauge.



Avion's monitor panel contains a 12 Volt disconnect switch to power down all 12V circuits when not in use. Other functions include analog clock, LP gas reserve, battery condition, barometer, thermometer and hygrometer (humidity).

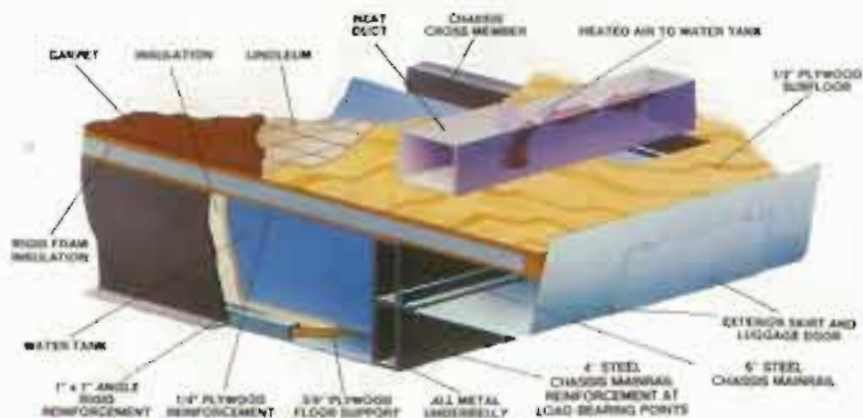


Step aboard on Avion's durable steel double step that has rounded corners and non-skid edges for your personal safety. Convenient night lights are also included.



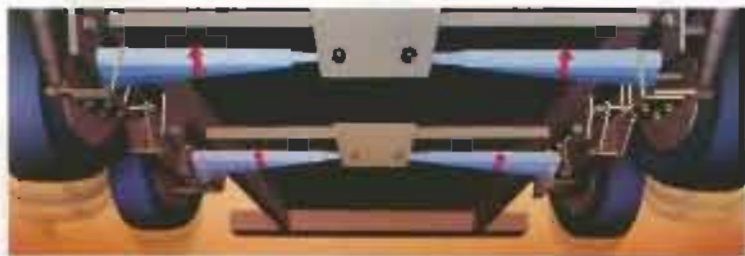
**WELCOME ABOARD TO  
AVION CLASS TRAVEL**

# Avion Hidden Features



## Floor Construction

Floor construction assures the strength, durability, and convenience you expect from Avion. All water and plumbing lines are contained within the floor and protected by the full length all metal underbelly.



## Adjust-A-Ride Suspension

Introduced in February 1980, this exclusive suspension system absorbs the "G" forces created by irregular roads. Each wheel has its own axle, spring and shock absorber. Adjust-A-Ride offers more protection for personal goods and provides effortless, smooth towing.

Avion Travel Trailers are manufactured by this subsidiary of Fleetwood Enterprises, Inc.

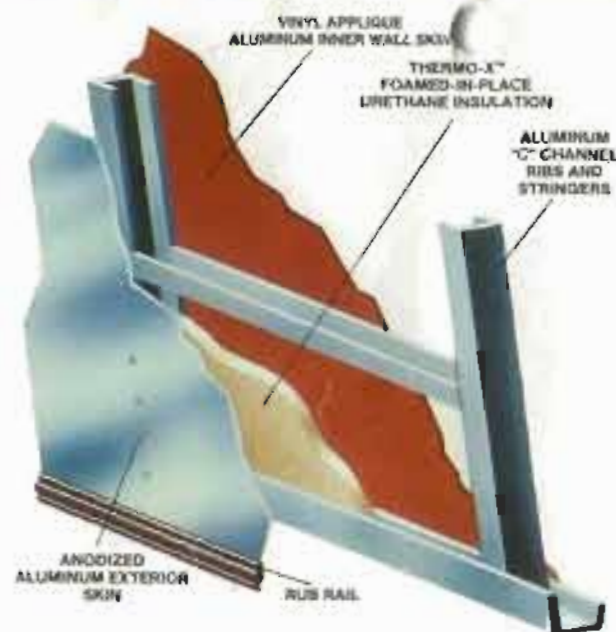
Avion Coach Corporation  
1300 E. Empire Avenue  
Benton Harbor, Michigan 49022

Your Local Avion Dealer Is:



## Wall Construction

In line with traditional aircraft construction, Avion's inner aluminum wall and outer aluminum skin is supported by aluminum ribs and stringers. The Thermo-X™ insulation is foamed in place and creates uniform thermal and sound insulation throughout.



## International Travel Club

Membership in the Avion International Travelcade Club is available to all Avion owners. Highlights include professionally planned Travelcades, three International Rendezvous as well as State Unit Rallies. The club offers the ideal opportunity to make new friends and enjoy the comraderie found with Avion ownership. For complete details, contact

Executive Secretary  
Avion Travelcade Club, Box 236  
DeBary, Florida 32713



**FLEETWOOD**

**FLEETWOOD ENTERPRISES, INC.**

P.O. Box 7638  
Riverside, California 92523

*If It's Built By Fleetwood, It's Built For Fun!*