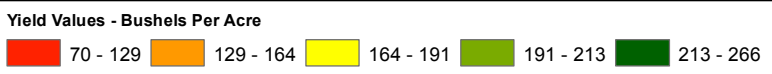
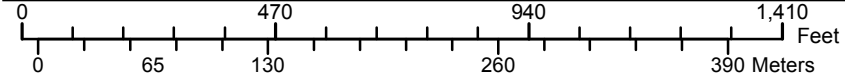
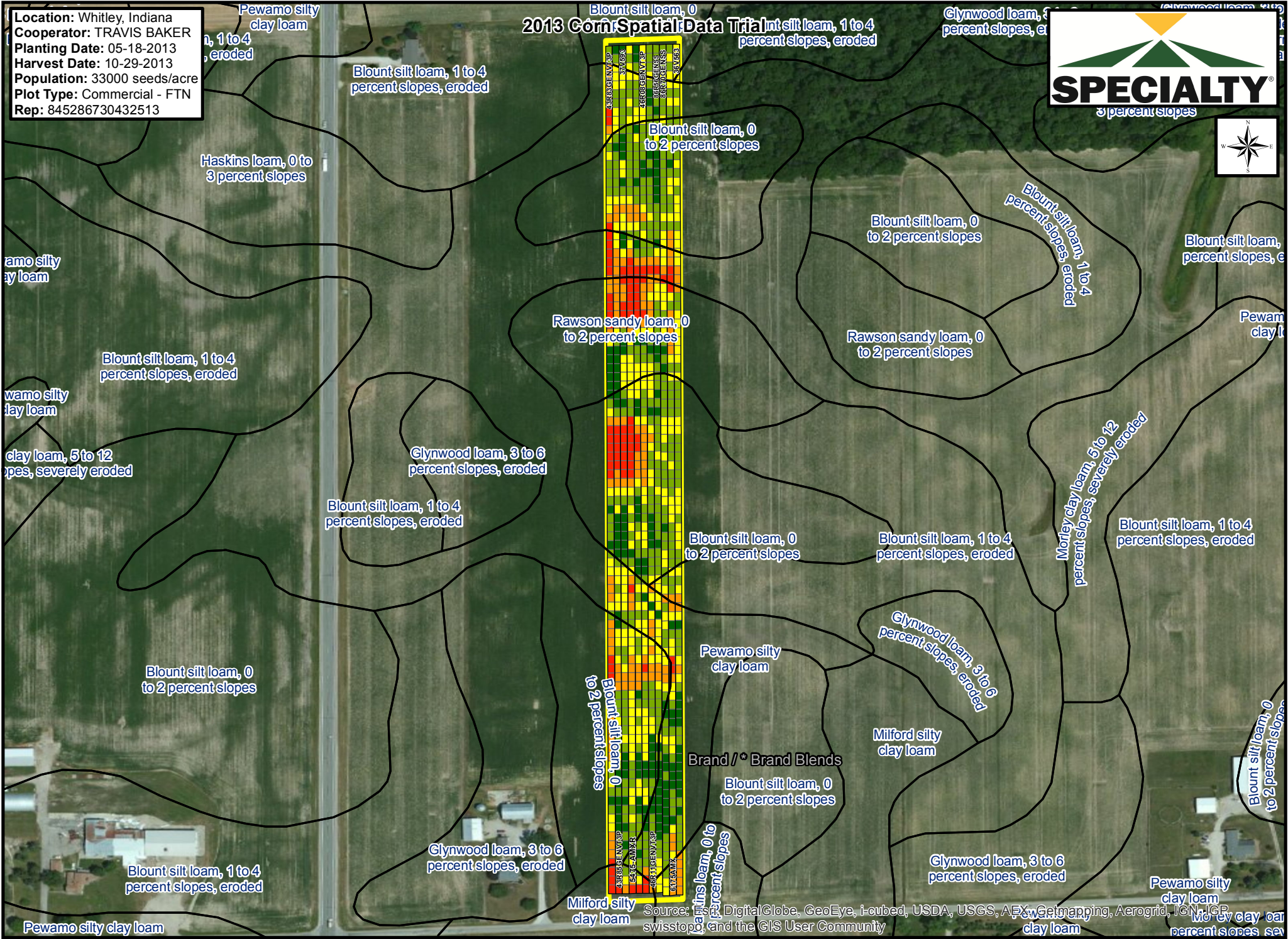


Location: Whitley, Indiana
Cooperator: TRAVIS BAKER
Planting Date: 05-18-2013
Harvest Date: 10-29-2013
Population: 33000 seeds/acre
Plot Type: Commercial - FTN
Rep: 845286730432513

2013 Corn Spatial Data Trial

Glynwood loam, 3 to 6 percent slopes, eroded



Source: Esri, DigitalGlobe, GeoEye, i-cubed, USDA, USGS, AeroGRID, IGN, IGP, swisstopo, and the GIS User Community

Location: Whitley, Indiana
Cooperator: TRAVIS BAKER
Planting Date: 05-18-2013
Harvest Date: 10-29-2013
Population: 33000 seeds/acre
Plot Type: Commercial - FTN
Rep: 845286730432513

Legend

All yield values are in bu/ac. All Area units are in Acres.

Soils (Yield in bu/ac):

Soil1 = Blount silt loam, 0 to 2 percent slopes

Soil2 = Pewamo silty clay loam

Soil3 = Rawson sandy loam, 0 to 2 percent slopes

Soil4 = Blount silt loam, 1 to 4 percent slopes, eroded

* Denotes Product Brand Blend.

ID	Business Brand	Product Brand	Traits	Rank	Yield	CV	Moisture	Area (sum)	Yield Soil1	CV Soil1	Yield Soil2	CV Soil2	Yield Soil3	CV Soil3	Yield Soil4	CV Soil4
1	SPECIALTY HYBRIDS	43R83GENVT3P	GENVT3PRIB	11	160	26.2	17	0.9	163	22.5	145	19.3	179	33.6		
2	SPECIALTY HYBRIDS	43R85GENVT3P	GENVT3PRIB	6	186	18.3	16.6	0.9	190	18.3	180	10.1	188	21.9		
3	SPECIALTY HYBRIDS	37V593	GENVT3PRIB	5	187	18.3	17.2	0.9	192	18.5	187	12.8	167	22.4		
4	BECK'S	5475-AMXR	AMXR	10	167	22.6	19.8	0.9	172	19.8	171	20.3	138	31.3		
5	SPECIALTY HYBRIDS	46R02GENVT3P	GENVT3PRIB	7	186	18.1	19.4	0.9	192	15.7	189	13.7	155	27.3		
6	SPECIALTY HYBRIDS	46R08GENVT3P	GENVT3PRIB	9	182	16.5	18.9	0.9	186	12.8	190	14.1	161	22.3		
7	SPECIALTY HYBRIDS	46R11GENVT3P	GENVT3PRIB	3	192	12.4	19.8	0.9	197	9	192	14.7	174	15.3		
8	SPECIALTY HYBRIDS	86R56GENSS	GENSSRIB	1	201	11.6	19.5	0.9	202	8.7	201	15.6	205	8.9		
9	SPECIALTY HYBRIDS	86R70GENSS	GENSSRIB	2	196	9.9	20.1	0.9	196	7.6	199	12.8	191	9.8		
10	BECK'S	6175AMX	AMXR	8	183	15.6	21	0.9	193	7.3	181	20.1	157	17		
11	SPECIALTY HYBRIDS	36V563	GENVT3PRIB	4	190	11.4	17.6	0.9	190	6.6	201	11.5	183	7.6	173	7.7
				Field Avg	185		18.8	9.9	188		185		173		173	

Location: Whitley, Indiana
Cooperator: TRAVIS BAKER
Planting Date: 05-18-2013
Harvest Date: 10-29-2013
Population: 33000 seeds/acre
Plot Type: Commercial - FTN
Rep: 845286730432513

VALUE ADDED TRAITS:

RR2 = Roundup Ready® Corn 2
VT3 = YieldGard VT Triple®
GENSS = Genuity® SmartStax®
GENVT3P = Genuity® VT Triple PRO®
GENVT2P = Genuity® VT Double PRO®
VTRR2 = YieldGard VT Rootworm/RR2®
GENSSRIB = Genuity® SmartStax® RIB Complete® Corn Seed Blend
GENVT2PRIB = Genuity® VT Double PRO® RIB Complete® Corn Seed Blend
DGV3PRIB = Genuity® DroughtGard™ Hybrids with VT Triple PRO® RIB Complete® Corn Blend
DGV3P = Genuity® DroughtGard™ Hybrids with VT Triple PRO® Corn
DGV2PRIB = Genuity® DroughtGard™ Hybrids with VT Double PRO® RIB Complete® Corn Blend
DGV2P = Genuity® DroughtGard™ Hybrids with VT Double PRO® Corn
DGRR2 = Genuity® DroughtGard™ Hybrids with Roundup Ready® Corn 2

GENERAL:

N/A = Not Available


Individual results may vary, and performance may vary from location to location and from year to year. This result may not be an indicator of results you may obtain as local growing, soil and weather conditions may vary. Growers should evaluate data from multiple locations and years whenever possible. Always read and follow IRM, where applicable, grain marketing and all other stewardship practices and pesticide label directions. Leaf DesignSM is a servicemark of Monsanto Company. All other trademarks are the property of their respective owners. ©2013 Monsanto Company.

Monsanto Company is a member of Excellence Through Stewardship® (ETS). Monsanto products are commercialized in accordance with ETS Product Launch Stewardship Guidance, and in compliance with Monsanto's Policy for Commercialization of Biotechnology-Derived Plant Products in Commodity Crops. This product has been approved for import into key export markets with functioning regulatory systems. Any crop or material produced from this product can only be exported to, or used, processed or sold in countries where all necessary regulatory approvals have been granted. It is a violation of national and international law to move material containing biotech traits across boundaries into nations where import is not permitted. Growers should talk to their grain handler or product purchaser to confirm their buying position for this product. Excellence Through Stewardship® is a registered trademark of Biotechnology Industry Organization.

B.t. products may not yet be registered in all states. Check with your Monsanto representative for the registration status in your state.

IMPORTANT IRM INFORMATION: Genuity® RIB Complete® corn blend products do not require the planting of a structured refuge **except** in the Cotton-Growing Area where corn earworm is a significant pest. Genuity® SmartStax® RIB Complete®, Genuity® VT Double PRO® RIB Complete® and Genuity® VT Triple PRO® RIB Complete® corn are blended seed corn products. See the IRM/Grower Guide for additional information. Always read and follow IRM requirements.

ALWAYS READ AND FOLLOW PESTICIDE LABEL DIRECTIONS. Roundup Ready® crops contain genes that confer tolerance to glyphosate, the active ingredient in Roundup® brand agricultural herbicides. Roundup® brand agricultural herbicides will kill crops that are not tolerant to glyphosate. DroughtGard™, Genuity®, Genuity Design®, Genuity Icons, Genuity®, RIB Complete and Design®, RIB Complete®, Roundup Ready 2 Technology and Design®, Roundup Ready®, Roundup®, SmartStax and Design®, SmartStax®, VT Double PRO®, VT Triple PRO® and YieldGard VT Triple® are trademarks of Monsanto Technology LLC. LibertyLink and the Water Droplet Design® is a registered trademark of Bayer. Herculex® is a registered trademark of Dow AgroSciences LLC. Respect the Refuge and Corn Design® and Respect the Refuge® are registered trademarks of National Corn Growers Association. All other trademarks are the property of their respective owners. ©2013 Monsanto Company.



Insect Resistance Management
Planting Refuges, Preserving Technology

Before opening a bag of seed, be sure to read, understand and accept the stewardship requirements, **including applicable refuge requirements for insect resistance management**, for the biotechnology traits expressed in the seed as set forth in the Monsanto Technology/Stewardship Agreement that you sign. By opening and using a bag of seed, you are reaffirming your obligation to comply with the most recent stewardship requirements.

