

CYPERACEAE – SEDGE FAMILY

Plant: annual or more commonly perennial

Stem: stem (solid) is termed a culm, simple, mostly erect, often angled (mostly triangular) but some round or angled; some with rhizomes or stolons

Root: fibrous

Leaves: mostly linear, alternate, parallel veins, often in 3 ranks (vertical rows), leaf sheath usually closed, leaf blade flat, folded, round or absent; a ligule is often present

Flowers: small, 2-ranked or spiraled on a spike stalk in 1 or more spikelets in simple to complex inflorescences, each flower in axil of a scale, the inflorescence itself may be subtended by a leaf-like and sometimes showy bracts; perianth usually represented by 1-6 bristles, scales or are absent; perfect or imperfect (monoecious); 3 (1-6) stamens; 1 pistil, 1 style, ovary superior, 2-3 carpels, 1-chambered ovary

Fruit: achene (lens-shaped to triangular in cross-section, achene enclosed in a sac – perigynium in the *Carex* genus)

Other: often occurring in bogs, swamps, or meadows along streams, but also in dry areas and forests; Monocotyledons Group

Genera: 100+ genera; locally many genera

2 slides per species

CYPERACEAE – GENUS RHYNCHOSPORA (A-Z)

Brown Beak Sedge [Rush]; *Rhynchospora capitellata* (Michx.) Vahl

Shortbristle Horned Beaksedge; *Rhynchospora corniculata* (Lam.) A. Gray

Globe [Globe-Fruited] Beak Sedge; *Rhynchospora globularis* (Chapm.) Small

Sandswamp Whitetop [Whitetop Sedge]; *Rhynchospora latifolia* (Baldw. ex Ell.) Thomas

Brown Beak Sedge [Rush] p1

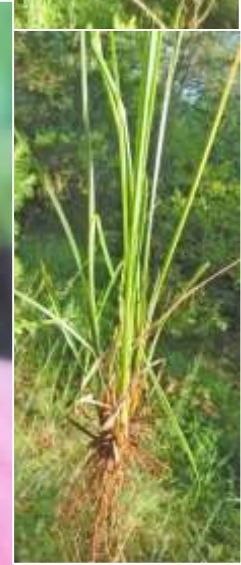
Rhynchospora capitellata (Michx.) Vahl

Cyperaceae (Sedge Family)

Near Heber Springs, Cleburne County, Arkansas

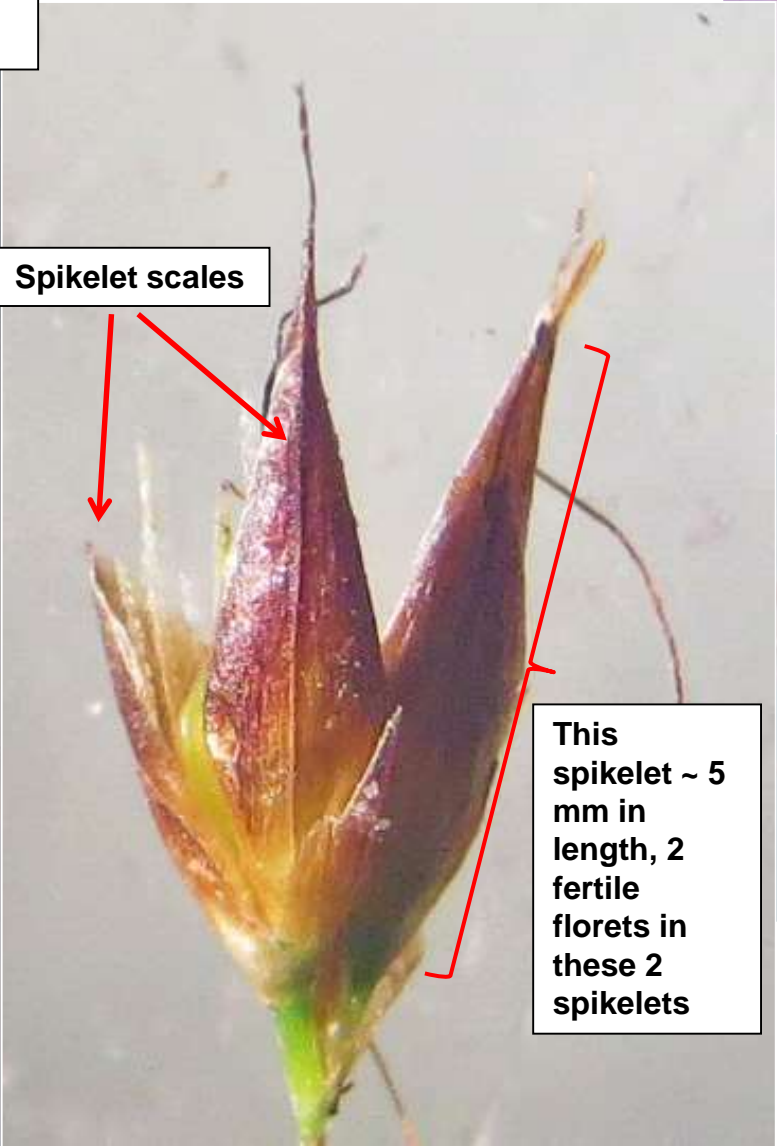
Notes: tall plant, height to 100+ cm; culm triangular, smooth; roots fibrous, perennial; leaves flat, up to 3+ mm wide and 70 cm in length; inflorescence composed of clusters of spikes, both terminal and in axils; spikes composed of spikelets to 5+ mm, each spikelet may contain 1 to 2 (up to 5) fertile florets to 3-4 mm, usually 2 or 3 fruits per floret - see photos on p2; usually in damp habitats; late spring to fall

[V Max Brown, 2014]



Brown Beak Sedge [Rush] p2
Rhynchospora capitellata (Michx.) Vahl
[V Max Brown, 2014]

Fruit smooth, ellipsoidal to ovoid with narrow raised margins, tubercle narrow triangular, 6 retrorsely (downward) barbed bristles reaching to top of tubercle



Clusters of spikelets



Shortbristle Horned Beaksedge - p1

Rhynchospora corniculata (Lam.) A. Gray

Cyperaceae (Sedge Family)

Mingo Swamp Area, Stoddard County, Missouri

Notes: tall plant, height to 200+ cm; culm roughly triangular, smooth, often with rhizomes, perennial; roots fibrous; leaves flat or folded, up to 20 mm wide and 100 cm in length; inflorescence composed of clusters or corymbs of spikelets, both terminal and in axils; 1 to several fertile florets per spikelet - see photos on p2 for details; usually in marshes, swamps and muddy habitats; summer to fall

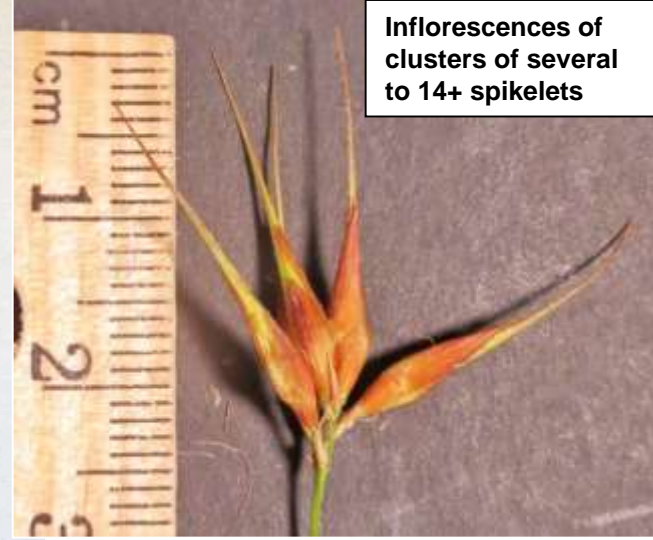
[V Max Brown, 2015]



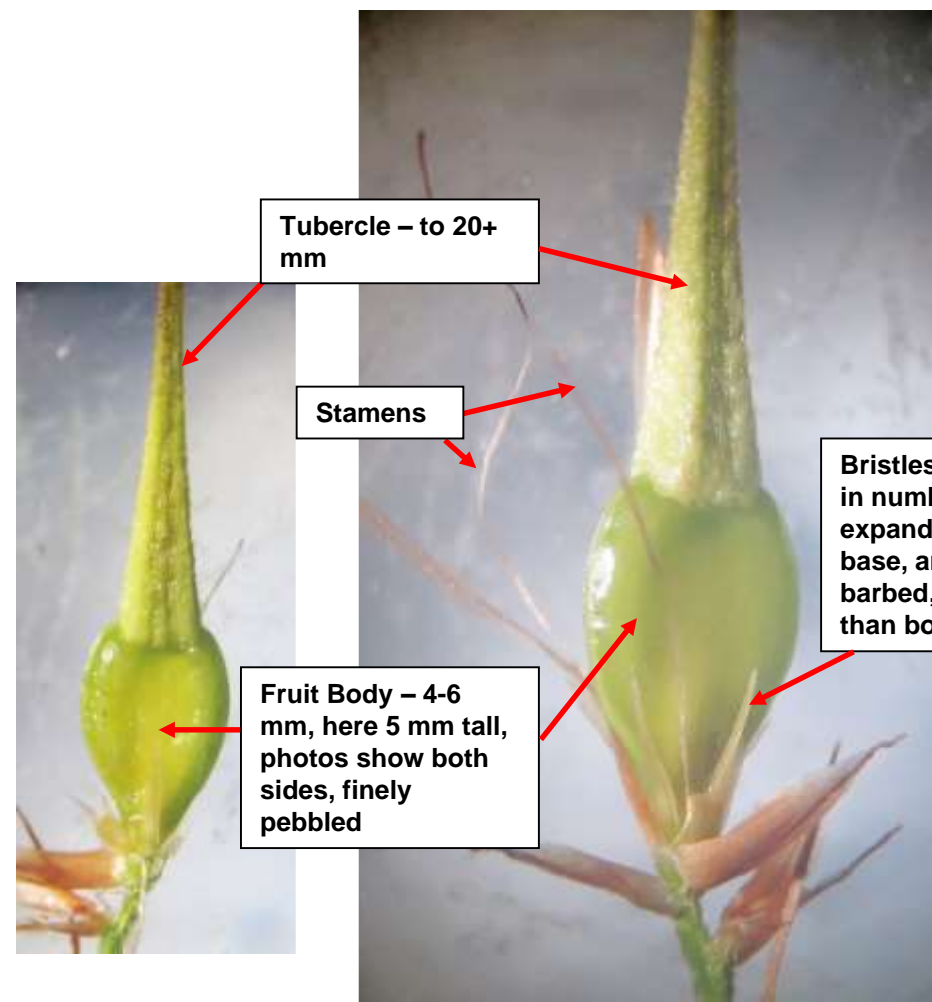
Leaf width up to 20 mm, here about 12 mm

Shortbristle Horned Beaksedge - p2

Rhynchospora corniculata (Lam.) A. Gray [V Max Brown, 2015]



Inflorescences of clusters of several to 14+ spikelets



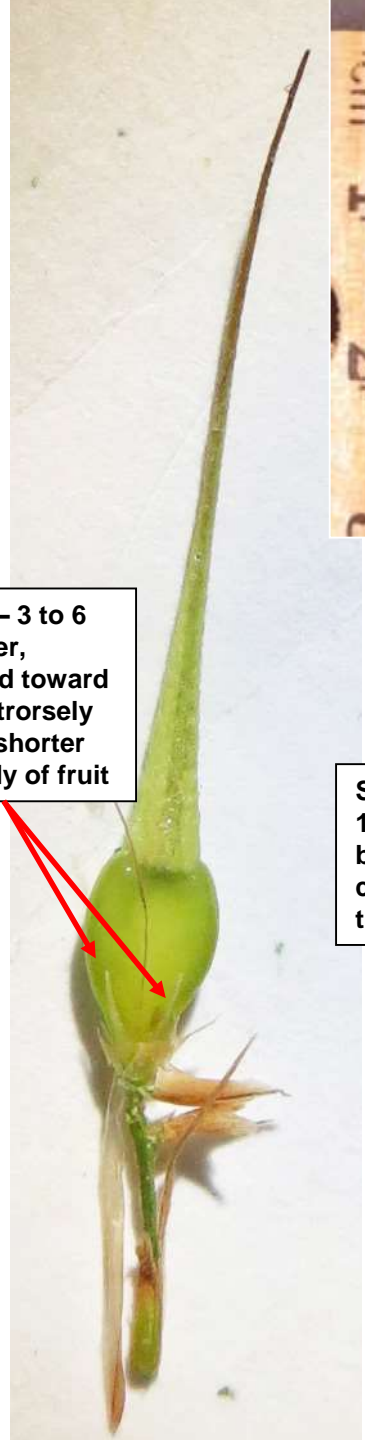
Tubercle - to 20+ mm

Stamens

Fruit Body - 4-6 mm, here 5 mm tall, photos show both sides, finely pebbled

Bristles - 3 to 6 in number, expanded toward base, antrorsely barbed, shorter than body of fruit

Fruit body with very long tubercle, bristles shorter than length of fruit body



Scales - to 13+ mm, brown in color, acute tip, raised rib



Globe [Globe-Fruited] Beak Sedge - p1



Rhynchospora globularis (Chapm.) Small
Cyperaceae (Sedge Family)

Near Bolivar, Polk County, Missouri

Notes: perennial, caespitose or not, up to 80+ cm; culm triangular, smooth, no rhizomes; roots fibrous, leaves flat, up to 3+ mm wide and 70 cm in length; inflorescence composed of clusters of spikes, both terminal and in axils; spikes composed of spikelets to 4+ mm, each spikelet may contain 1 to 3 fertile florets - see photos on p2; usually in damp habitats or in upland areas; late spring to fall (three varieties are listed in FNA - this is probably variety *globularis* due to transverse rugose pattern on tubercle and bristles only halfway up the body; summer to fall

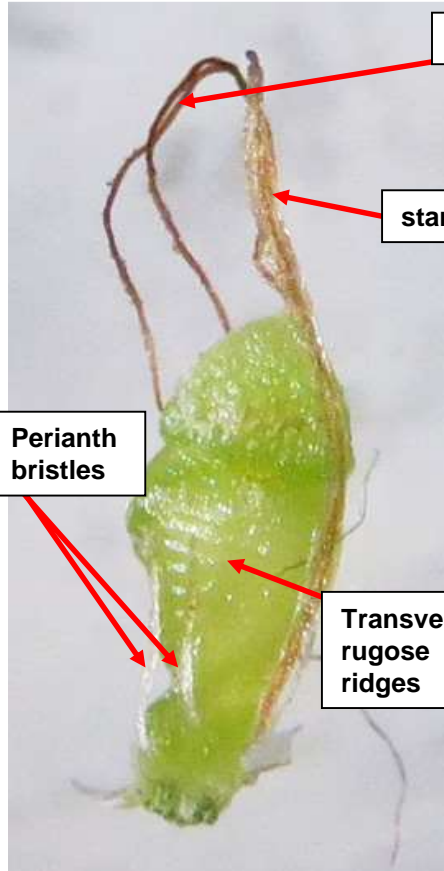
[V Max Brown, 2015]



Globe [Globe-Fruited] Beak Sedge - p2

Rhynchospora globularis (Chapm.) Small

[V Max Brown, 2015]



styles

stamen

Perianth bristles

Transverse rugose ridges



Mature achene – body with horizontal ridges or wrinkles with fine vertical lines



Inflorescence - clusters on branches



Several spikelets with 1 to 3 florets, note scale has short awn



Achene – here body is 1.2 mm tall (can be up to 1.5 mm), tubercle here 0.5 mm tall (up to 0.6 mm), body is usually more obovate to ovoid than shown (immature specimen here), has horizontal ridges (rugose), 2 styles, perianth bristles up to about half way up the body of the fruit, barbs point upward

Achene within scales



Sandswamp Whitetop

[Whitetop Sedge]

Rhynchospora latifolia (Baldw.
ex Ell.) Thomas

Cyperaceae (Sedge Family)

Tybee Island, Georgia

Notes: 7-10 white-top bracts at the top of this
plant ID it (Star-Rush has less); plant 30-70 cm in
height; a southern and costal sedge

[V Max Brown, 2006]



Under Revision

