

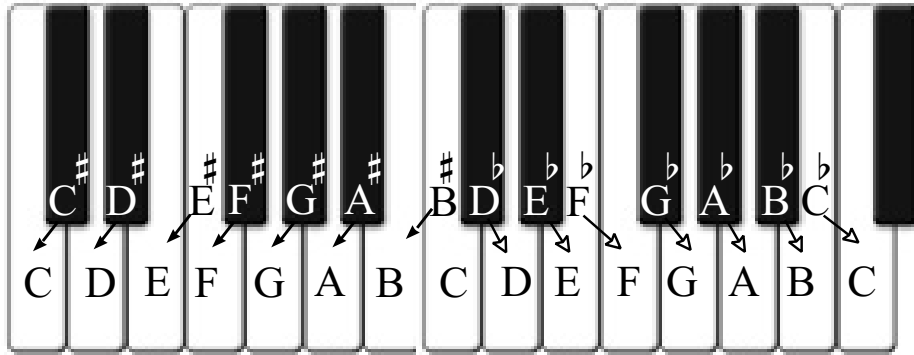
half steps and the natural sign

A ♮ (natural) sign is written to cancel a note that has a sharp or flat (accidental). For example, if there is a C# in the bar and we want the next note to be a C, a natural sign is put in front of the C.

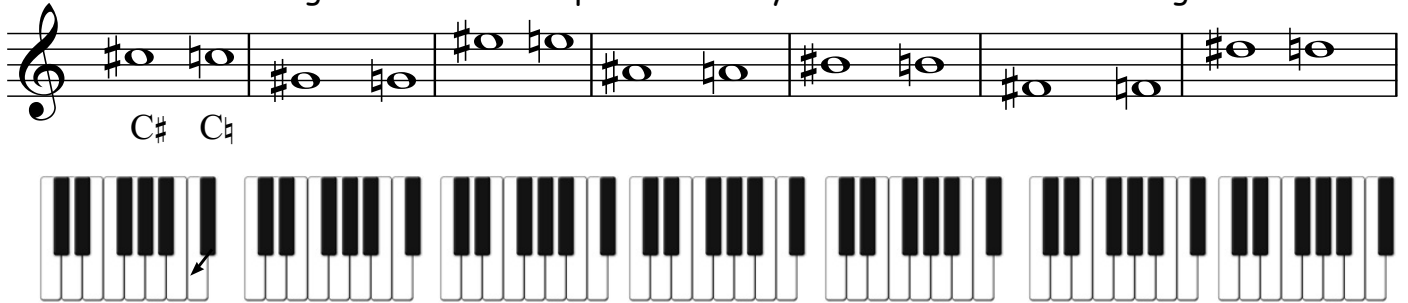
### Rules:

a ♯ note following a ♯ note: lowers the note by a half step ie. C♯ to C

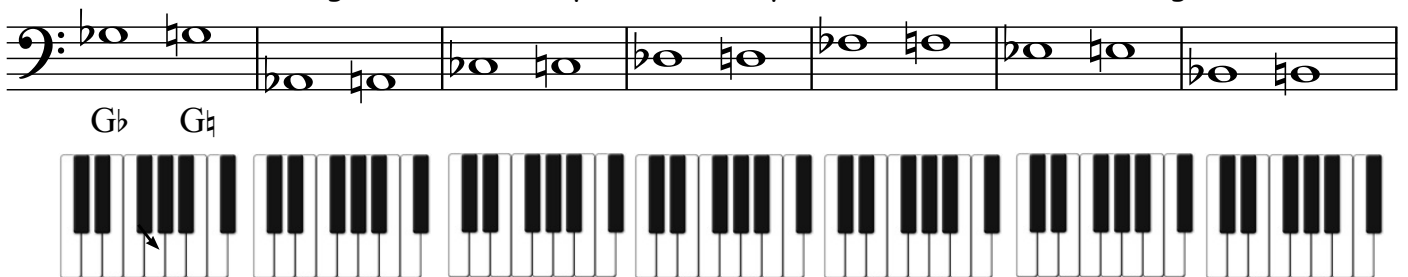
a ♯ note following a ♭ note: raises the note by a half step ie. D♭ to D♮



1. Name the following lowered half steps. On the keyboard show the notes using an arrow.



2. Name the following raised half steps. On the keyboard show the notes using an arrow.



3. Name the following half steps. On the keyboard show the notes using an arrow.



