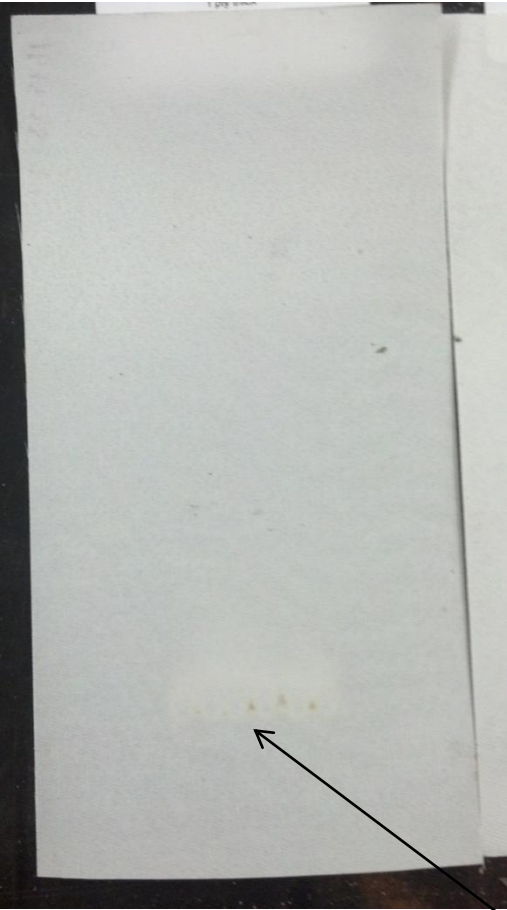


Test Summary

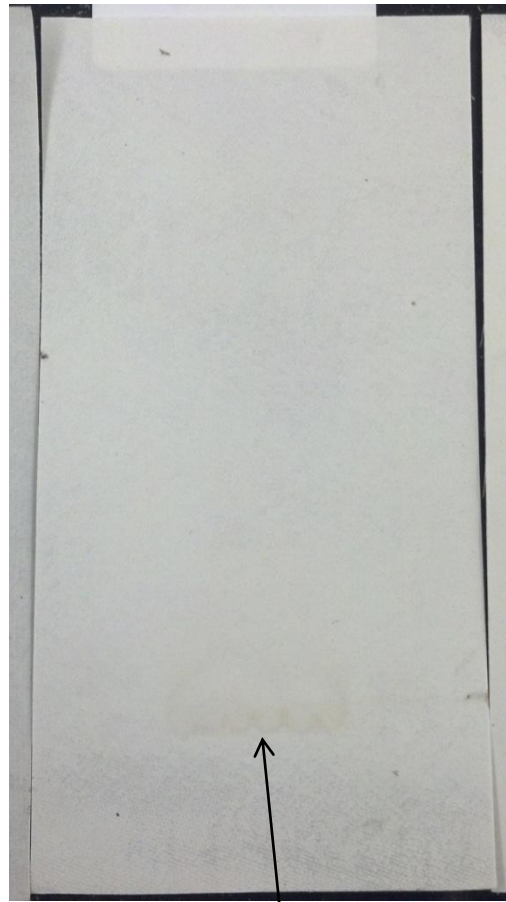
- Refer to previous Materials Working Group presentation for test details and comparison to burn lengths of composite materials
 - <http://www.fire.tc.faa.gov/pdf/materials/June13Meeting/OCHS-0613-COMPOSITES.pdf>
- No measurable burn length was observed on any sample outside of the flame footprint
- Only 1 of each configuration was tested, as the materials were found to not propagate flames

Flexible Ceramics Laminates

1 Ply



2 Ply



3 Ply



Flame Impingement Footprint

Flexible Ceramics Sandwich Laminates

1 Ply Sandwich Panel



2 Ply Sandwich Panel



Flame Impingement Footprint

Compare to burn lengths from same test of composite materials

Aerospace Carbon Fiber



A.F.: 22 sec.
B.L.: 1.2"
B.W.: 1.6"

GLASS EPOXY



A.F.: 200 sec.
B.L.: 3.7"
B.W.: 3.2"

Glass Reinforced Vinylester



A.F.: 267 sec.
B.L.: 5.8"
B.W.: 4.9"

A.F.=After Flame time
B.L.=Vertical Burn length
B.W.=Horizontal Burn width