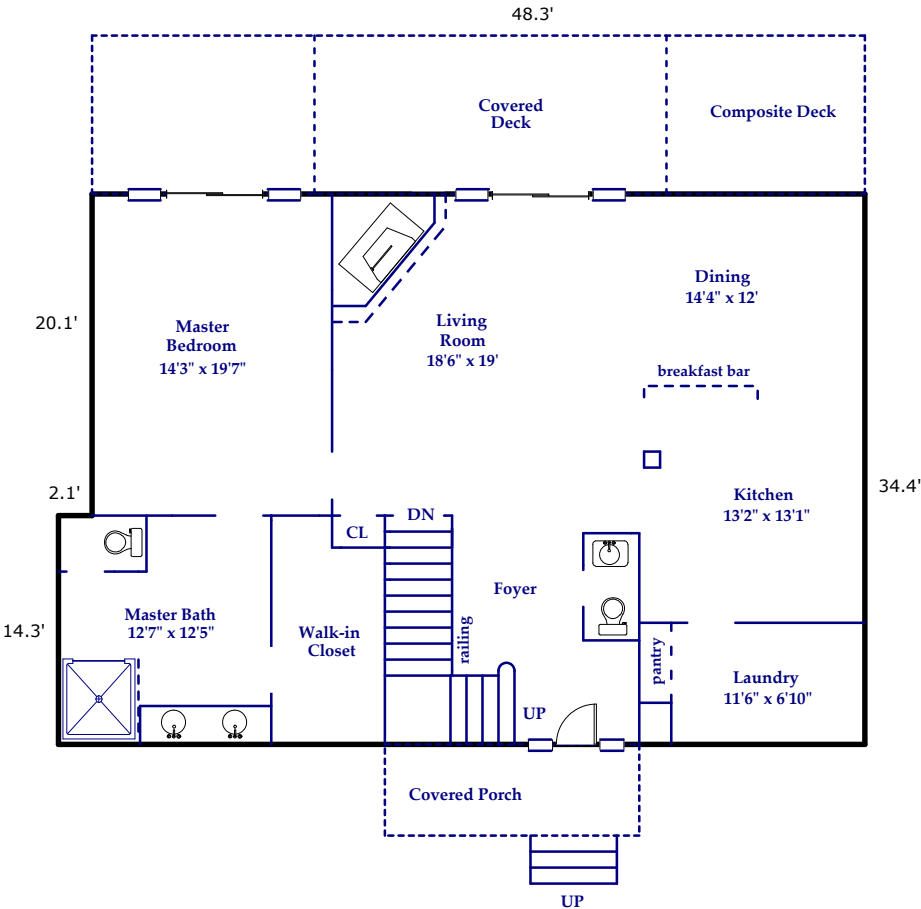


SQUARE FOOTAGE CALCULATIONS

158 Black Oak Drive, Asheville

Approximate Total Finished/Heated Living Area:
3486 Square Feet

First Floor: 1692 Square Feet
Second Floor: 980 Square Feet
Below Grade: 814 Square Feet

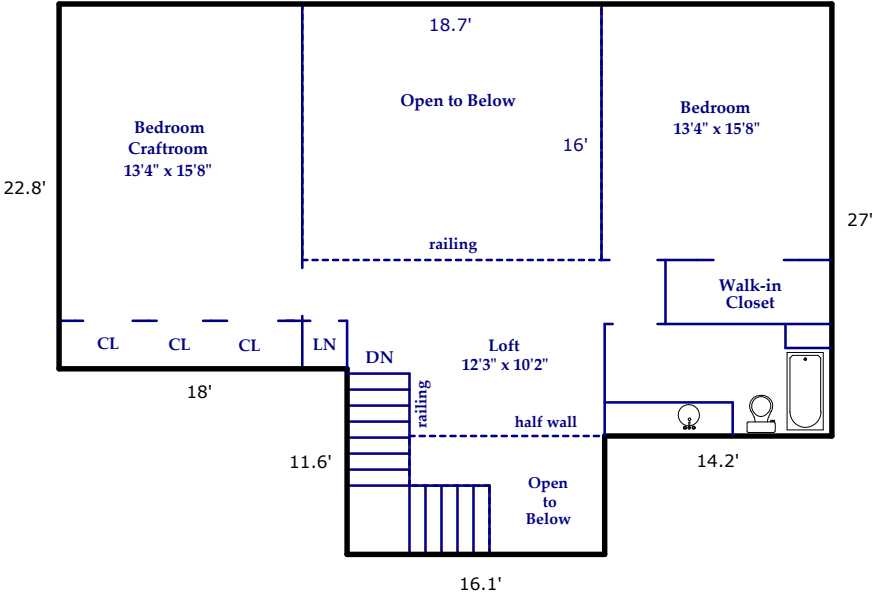


FIRST FLOOR
1692 Square Feet

Prepared by Agent Services: **Beverly-Hanks & Associates**

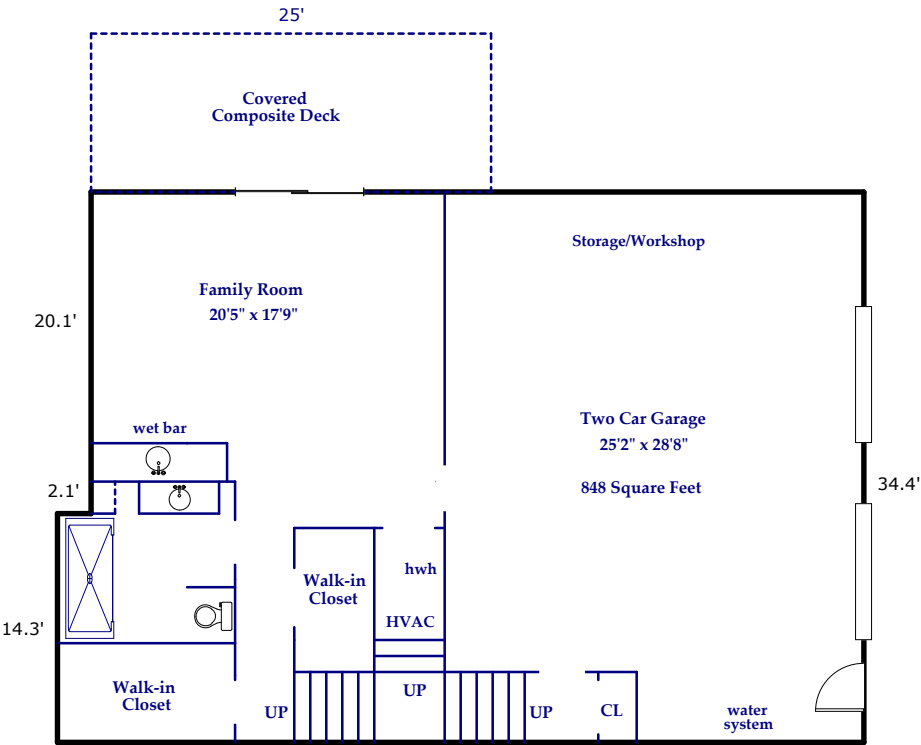
Information herein deemed reliable, but not guaranteed. Floor plan for review purposes only. All dimensions approximate. Not for construction.
Scale: 1" = 12'

SQUARE FOOTAGE CALCULATIONS



SECOND FLOOR
980 Square Feet

SQUARE FOOTAGE CALCULATIONS



BELOW GRADE
1692 Square Feet

Approximate Total Finished/Heated Living Area:
814 Square Feet

Unfinished Mechanical Area: 30 Square Feet
Garage: 848 Square Feet