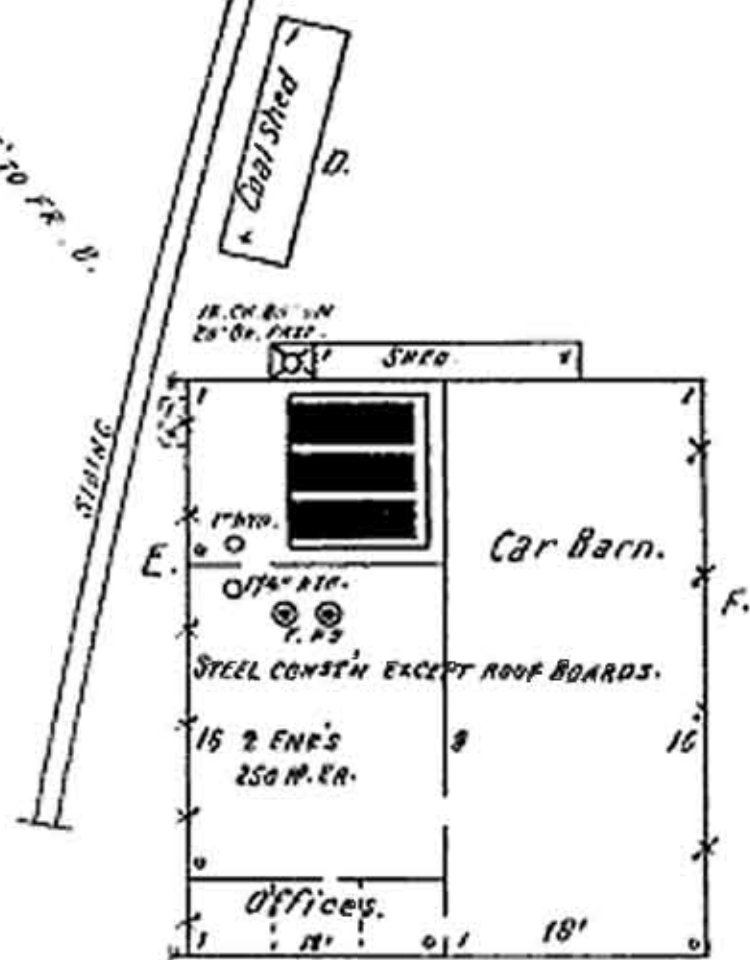


3 Miles N.E. of Carterville P.O.

NO EXPOSURE ANY SIDE.

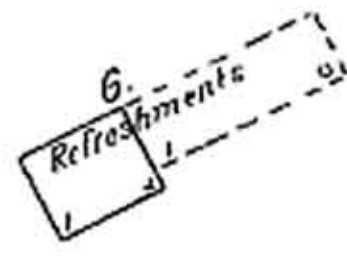
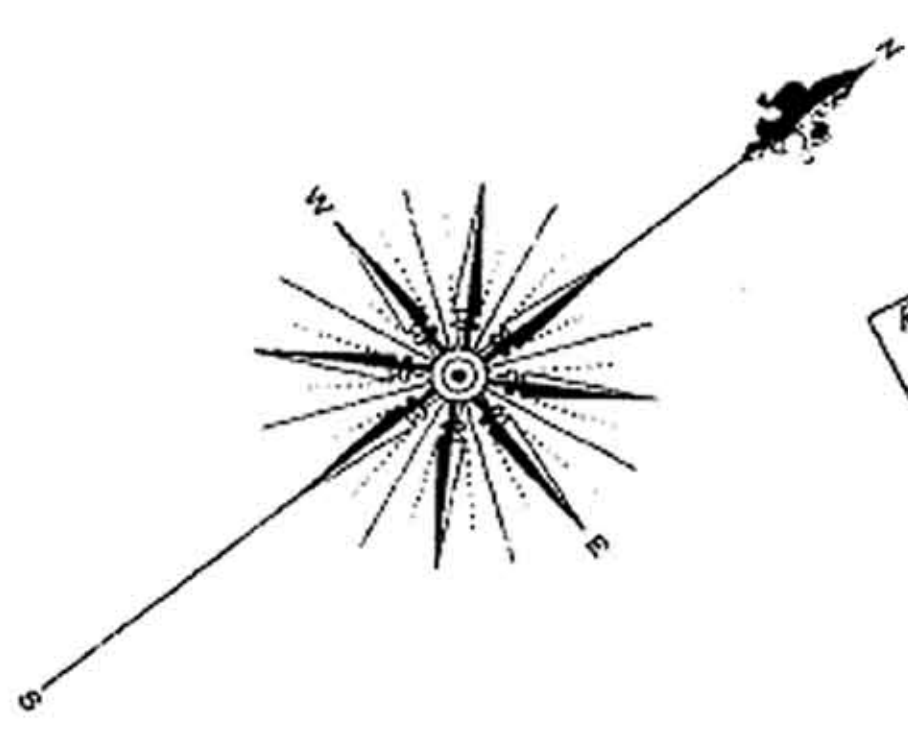
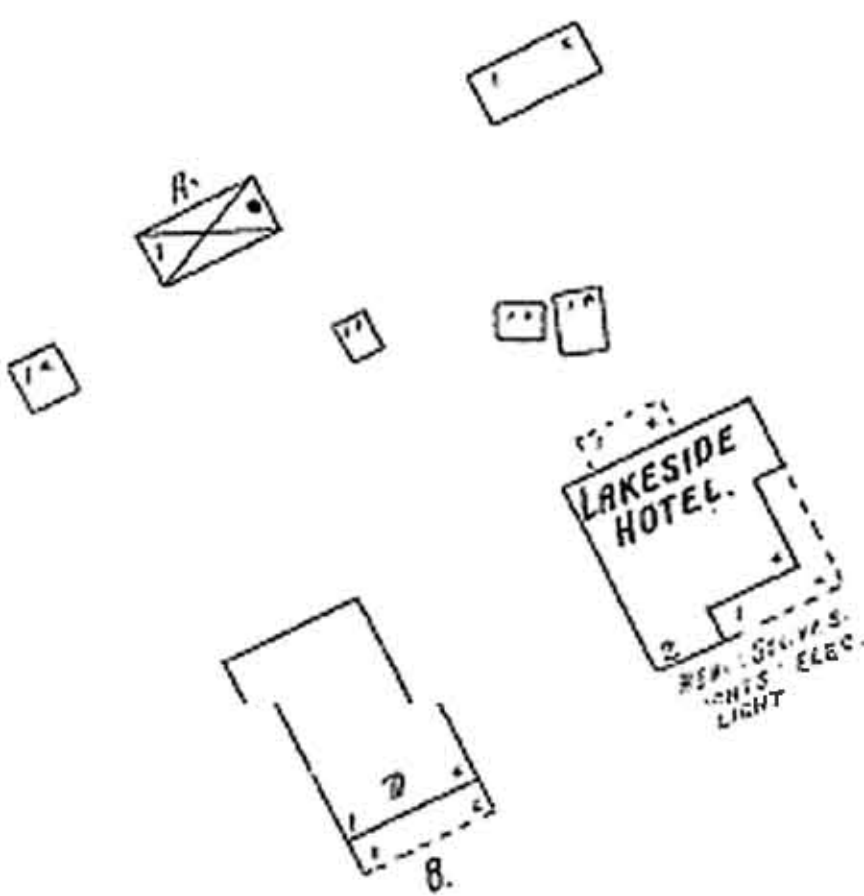
FEB. 1906
WEBB CITY
MO.

23

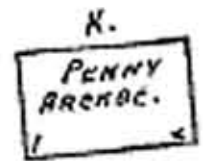
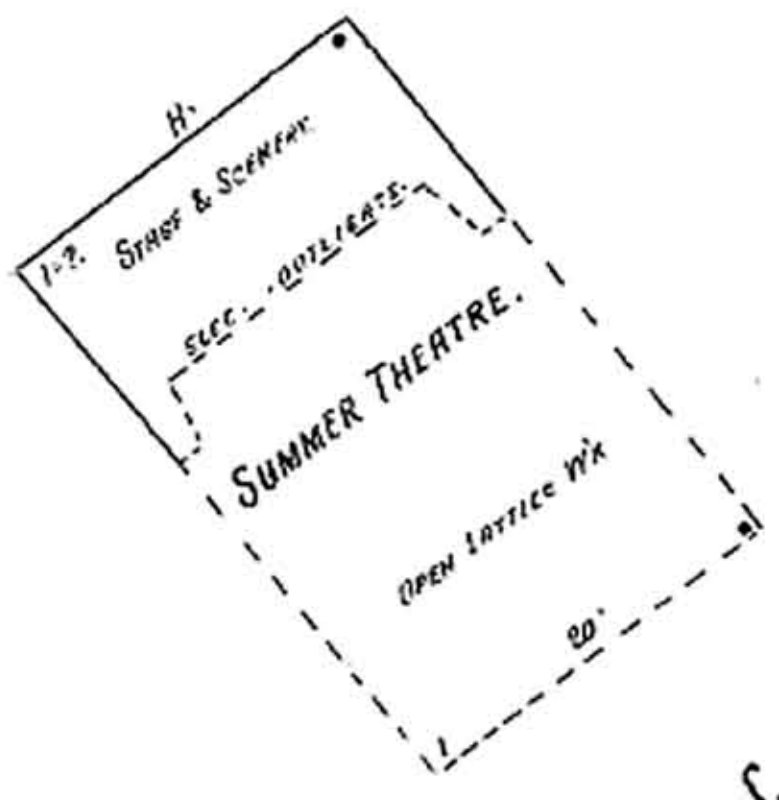


SO. W. M. E. L. R. R. CO'S
LAKESIDE CAR BARN & SUB STATION.

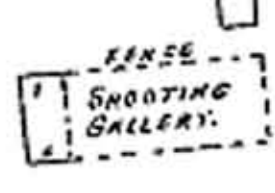
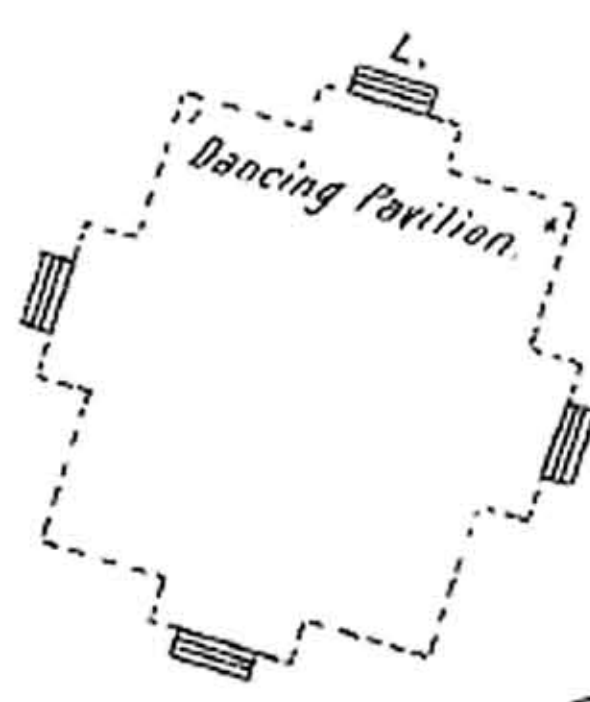
MEN ON DUTY DAY AND NIGHT. 2 STOVES.
F.P'S DRAW FROM CENTER CREEK. 50' DIA.
HOSE HT. 10 HIG. IN BOILER ROOM HEAT.
STOVES. FUEL OIL. LIGHTS. ELEC. AND
KERO. LAMPS AND LAMP GLASS.



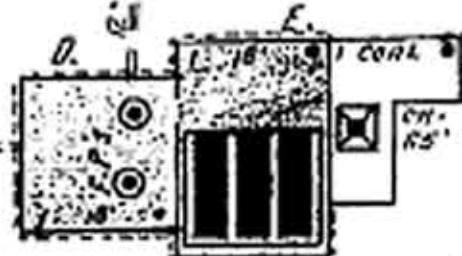
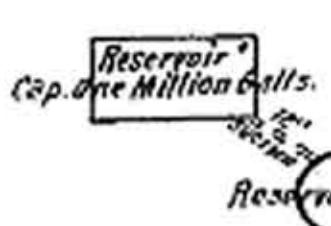
S. W. M. O. E. L. E. C. T. R. I. C R. R. CO'S LAKESIDE PARK.



250' TO BOAT NO.

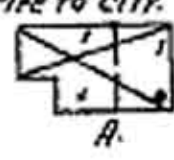


Center Creek



WEBB CITY & CARTERVILLE WATER WKS CO.

MEN ON DUTY DAY AND NIGHT. TEL. COMM. TO CITY. HEAT: STOVES.
FUEL AND LIGHTS: NAT. GAS. (ONE QUINCE RESERVED WITH COAL FOR FUEL.)
2 HUGHES COMPOUND DUPLEX F.P'S 10 1/2" x 18" x 12" CAP'Y ONE
MILLION GALS. EA. PER 24 HOURS. 12" BACHON & 10" DISCH. INTO 10"
WATER PIPE TO CITY.



Scale of Feet.

