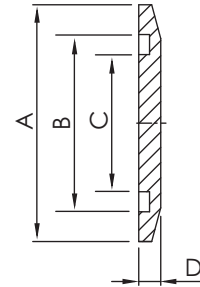


# NW Hardware & Seals

## NW BLANK FLANGES

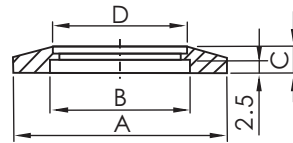
\*Material: SS 304L



Part Number	Flange Size	A	B	C	D
NW-BL-63	NW63	87.00	70.20	64.00	5.00
NW-BL-80	NW80	114.00	83.00	73.00	11.00
NW-BL-100	NW100	134.00	102.00	92.00	11.00
NW-BL-160	NW160	190.00	153.20	143.00	11.00

## NW BORED FLANGES

\*Material: SS 304



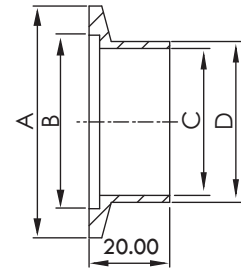
Part Number	Flange Size	A	B	C	D
NW-BF-63	NW 63	87.00	70.00	5.00	63.70
NW-BF-80	NW 80	114.00	83.00	11.00	76.40
NW-BF-100	NW 100	134.00	102.00	11.00	101.80
NW-BF-160	NW 160	190.00	153.00	11.00	152.90

ISO  
NW

# NW Hardware & Seals

## NW BUTT WELD FLANGES

\*Material: SS 304L



Part Number	Flange Size	A	B	C	D	Tube Size
NW-BWF-80	NW80	114.00	83.10	83.10	89.10	80A 10S
NW-BWF-80-1	NW80	114.00	83.10	84.90	89.10	80A 5S
NW-BWF-100	NW100	134.00	102.20	108.30	114.30	100A 10S
NW-BWF-100-1	NW100	134.00	102.20	110.10	114.30	100A 5S
NW-BWF-160	NW160	190.00	153.20	158.40	165.20	150A 10S
NW-BWF-160-1	NW160	190.00	153.20	159.60	165.20	150A 5S

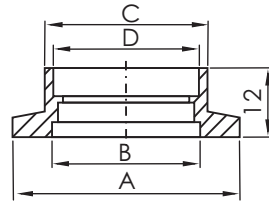


Figure 1

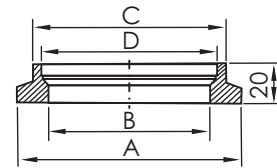
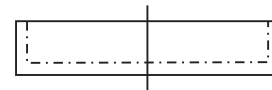


Figure 2

## NW SOCKET WELD FLANGES

\*Material: SS 304

Part Number	Flange Size	A	B	C	D	Figure
NW-SWF-63	NW 63	87.00	70.00	67.50	63.70	1
NW-SWF-80	NW 80	114.00	83.00	98.00	89.50	2
NW-SWF-100	NW 100	134.00	102.00	118.00	114.50	2
NW-SWF-160	NW 160	190.00	153.00	174.00	165.50	2



## NW FLANGE PLASTIC CAP

\*Material: PE

Part Number	Flange Size
NW-PC-63	NW 63
NW-PC-80	NW 80
NW-PC-100	NW 100

ISO  
NW