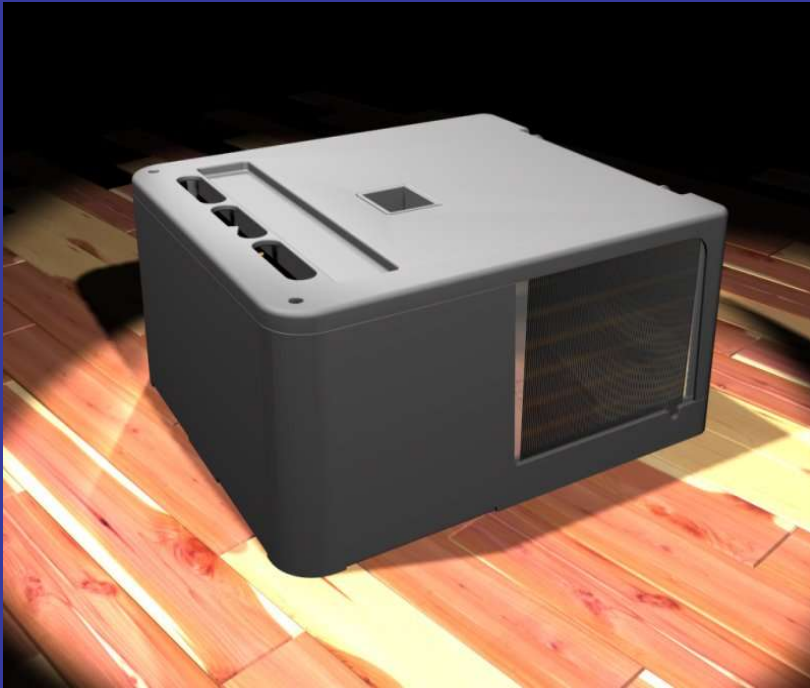


# GRS 2100



The GRS 2100 from SimpliCool Technologies outside of any application, is free-standing, completely self-contained, and enclosed in a durable structural foam plastic case.

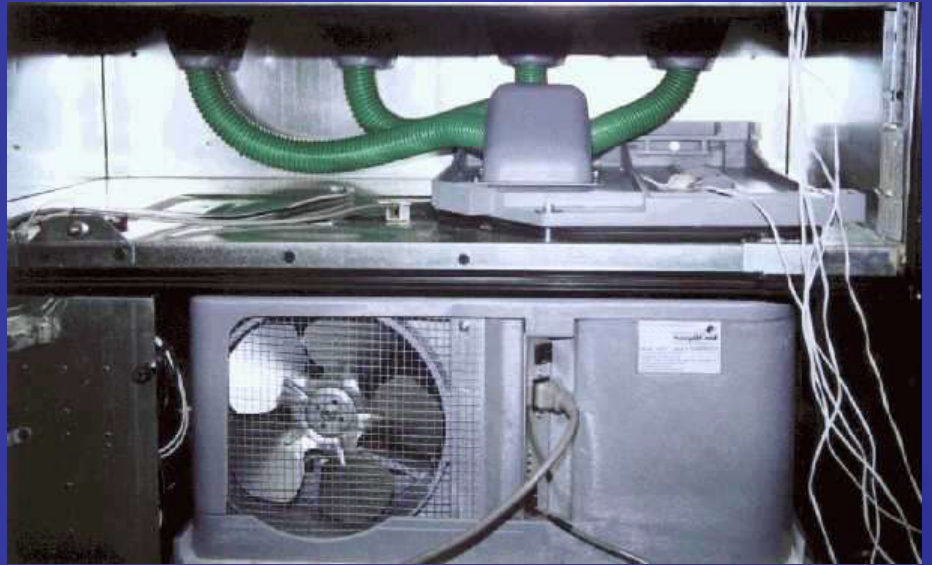
Weighing only 62 pounds, the GRS 2100 is the ideal universal refrigeration system that anyone can install, saving labor costs and inventory issues



Here, the GRS has been installed inside a can and bottle vendor at our test lab.

In the top picture, you can also see the retrofit kit. These kits will allow operators to direct airflow more efficiently and effectively than they ever have before. This will allow for entire cabinet cooling or zone cooling, whichever is preferred.

As seen in both pictures, the GRS is only 11" high so it creates additional space where the other refrigeration components used to be. Ideally, new cabinets could be designed around the GRS to provide 10% to 30% more product capacity.



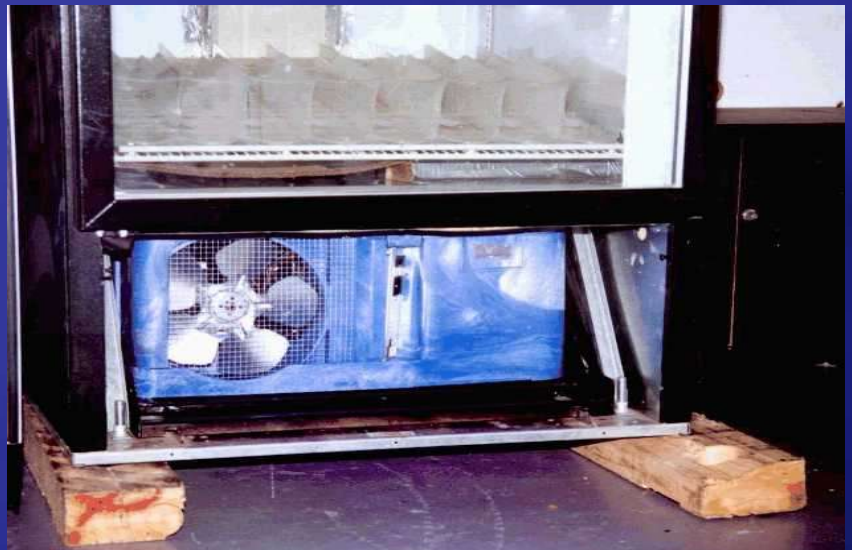


# GRS 2100

Coolers are one of the hardest pieces of equipment to repair, but yet one of the easiest to retrofit with a GRS 2100. This picture is of a typical single door cooler before the Cube is slid inside.



Here you can see, seconds later, the front side of the cooler after the Cube has been slid in.



This picture is of the same cooler and Cube, just of the back side. In addition to all the functional features of the Cube, it can add structural strength to the cooler cabinet itself.



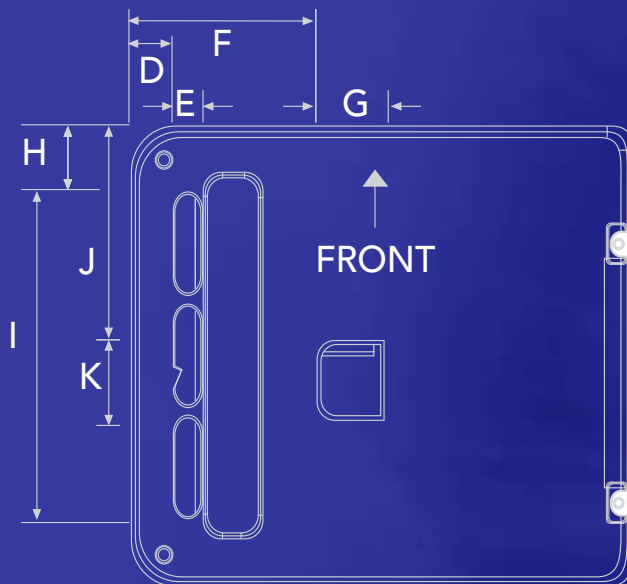
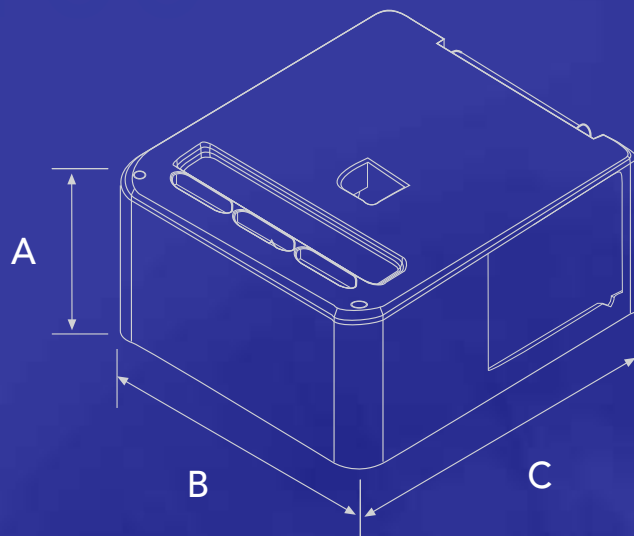
## FEATURES

1. A universal system that simplifies the cost of refrigeration operation, repair, and service in the vending/cooler industry.
2. Standardizes the refrigeration system into one component (The Cube), which operates efficiently through electronic controls regulating internal component operations with electrical, heat, and dirt build-up effectively managed.
3. Eliminates field service by permitting a simple exchange of the complete system in a matter of 1-3 minutes.
4. Designed to be substantially recyclable, from its exterior structural foam plastic case to recyclable internal metals, components, etc. with the applicable refrigerant also being reclaimed.
5. May be easily retrofitted in can and bottle vendors, as well as glass front coolers, and will ultimately be available for replacement in existing systems as well as incorporation into new product design.
6. Operates at reduced noise levels from existing systems
7. Using its electronic controls and design, it allows for continued operation during low voltage times, while also providing protection during brown outs and electrical surges.
8. Has the latest, high efficiency compressor, specifically designed for the vending application, with an excess capacity condenser and a cooling system that significantly reduces compressor operating temperatures.
9. A more reliable, cooler running compressor system, with improved compressor life and reduced downtime.
10. State-of-the-art, high-resolution temperature sensor network, which allows the system to monitor refrigerant pressure, airflow, cabinet temperature, and provide evaporator defrosting on demand.
11. Compatibility in communication with MDB (multidrop bus) vendors  
Its size permits greater product storage area in retrofitted existing machines or newly designed models. Drain pans can be eliminated and product delivery areas lowered as a result.
12. Per tests, reduces energy and utility costs.
13. Backed by 1 year warranty.

# GRS 2100

## S P E C S

MODEL	GRS2100
VOLTS	120AC
AMPS	6.5AMPS
HZ	60HZ
PHASE	SINGLE
OUTLET	3 PIN
TYPE	GND
NOISE	<2 VAC



COMPRESSOR	1/3 HP.
REFRIGERANT	R134A
CHARGE	8.5OZ.
HIGH SIDE TEST	197
LOW SIDE TEST	10
WEIGHT	62LBS.

## DIMENSIONS

A	B	C	D	E	F	G	H	I	J	K
10.125	19.759	22.50	2.8125	1.250	8.375	2.875	2.875	14.250	9.375	3.375