

# TRUMPET

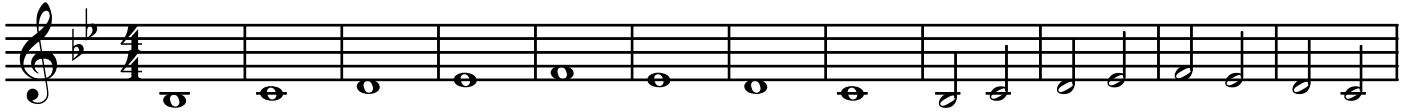
Trumpet is a Bb Transposing Instrument

# CONCERT A-FLAT MAJOR

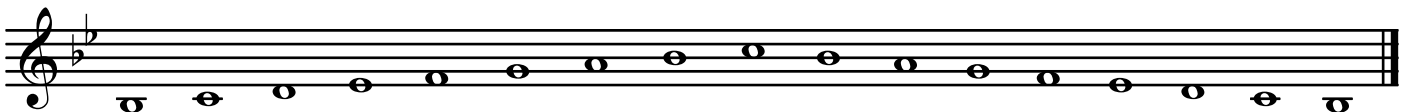
Your key: Bb Major



## 1. Long Tones



## 2. Extended Major Scale



## 3. Major Scale in Thirds



## 4. Major Scale Diatonic Triplets



## 5. Major Scale in 8th Notes



## 6. Major Tonic/Dominant Arpeggio



## 7. Chromatic Scale



**FACILITY**

## 8. Facility

Musical score for 'Facility' exercise, consisting of six staves of music in G minor. The score is divided into four sets of exercises:

- Set 1:** The first staff, starting with a box labeled 'Set 1' above the first measure.
- Set 2:** The second and third staves, with a box labeled 'Set 2' above the first measure of the second staff.
- Set 3:** The fourth and fifth staves, with a box labeled 'Set 3' above the first measure of the fourth staff.
- Set 4:** The sixth staff, with a box labeled 'Set 4' above the first measure.

The music features various rhythmic patterns, including eighth and sixteenth notes, and includes repeat signs at the end of the second, fourth, and sixth staves.

**ETUDE**

## 9. Etude

Musical score for 'Etude' exercise, consisting of four staves of music in G minor. The score is a single melodic and harmonic progression across four staves, featuring a variety of note values and rests.