

# MILL GROVE NEWS

Mill Grove Homeowners Association Newsletter

June 2014



## In This Issue

- From the Board
- Local Events
- Carpenter Bees - Time to check your wood!
- How to Tune Up your Lawn Mower
- Buffalo Chicken Dip

## From your HOA Board

- Upcoming HOA Board meetings are scheduled for 6/8 and 7/13 at 7pm. Board meetings are open to the community and we invite you to join us.
- The HOA board is having a “Paint the fence day” on 6/21. This is to paint the white fencing to the entrance of our neighborhood. Please join us that day to help us maintain our first impressions to the neighborhood. Come armed with your paint brush and a smile! We will provide the paint.

## Local Events

- Smyrna Food Truck Tuesdays are every Tuesday through the summer months and ends on September 30th. It all starts at 5pm at Taylor-Brawner Park (3180 Atlanta Road, Smyrna GA 30080).
- Smyrna Fresh Produce Market is every Saturday through the summer months and ends on September 27th. It all starts at 8am at the Smyrna First Baptist parking lot (1275 Church Street, Smyrna, GA 30080)
- Lego KidsFest will be here from 6/27-29th. This is a giant nationally-travelling LEGO expo that will be at the Cobb Galleria Center (Two Galleria Parkway, Atlanta, GA 30339). For more information visit <http://legokidsfest.com/atlanta/index.html>
- Atlanta Food Festival is back from 7/5-6th. This showcases Atlanta’s culinary profession and will be at Jim R. Miller Park (2245 Callaway Road, S.W., Marietta, GA 30008. For more information or to buy tickets, visit <http://www.atlfoodfest.com/>



Carpenter Bees can cause serious damage to your external wood structures.

## Carpenter Bees - Time to Check your Exterior Wood!

Carpenter bees are big black solitary bees that look similar to bumble bees but have bare, shiny backs whereas a bumble bee's back is hairy. Unlike honey bees that reproduce in hives, carpenter bees drill into wood in order to lay their eggs. Their holes are perfectly round and about 1/4 inch in diameter.

Although carpenter bees prefer softwoods such as cedar, redwood, or

cypress, they happily attack pine and most other species of wood. Even pressure treated wood is not immune from carpenter bee attack. As the bee drills into the wood, coarse sawdust may be seen coming out of the hole and piling up beneath. Since it only takes a couple of hours for a carpenter bee to drill a hole a few inches deep, lots of holes can appear over a fairly short period of time.

Most carpenter bee activity occurs in early spring when male and female bees emerge after spending the winter in old nest tunnels. Once they have paired and mated, the female bee drills into a suitable site while the male stays nearby to ward off intruders. Male carpenter bees often frighten people with their aggressive behavior but since they have no stinger they are essentially harmless. The female carpenter bees tend to be busy with floral visitation and nest provisioning, but have the ability to cause a painful sting if captured. Once the initial hole is drilled through the surface, the bee will make a turn and excavate a tunnel along the grain of the wood. This tunnel, which may run for several inches, becomes the cavity where the female deposits her eggs. Several eggs are laid in individual chambers separated by plugs of sawdust and pollen on which the larvae feed until they emerge as adults during the summer months. In addition to making new holes, carpenter bees also enlarge old tunnels and if left unattended for several years, serious damage to a wood member may result.

In the fall activity may again be seen as both male and female carpenter bees clean out old nest cavities where they hibernate through the winter. Since carpenter bees tend to migrate back to the same area from which they emerged, it is important to implement some control measures in order to prevent logs and wood members from becoming riddled by these bees.

*You can find further information about treating and preventing carpenter bees online.*



You can find Killer Spray at your local hardware store (Home Depot, Lowe's, Ace, etc.).

# Three R's - How to Tune Up your Lawnmower

By Angie Hicks, Founder/CMO  
Angie's List

Many homeowners strive for the perfect, emerald-green lawn, which often means that their lawn mower suffers considerable use and abuse. And without regular, preventive maintenance, there's a good chance an overworked lawn mower will sputter out just when you need it most.

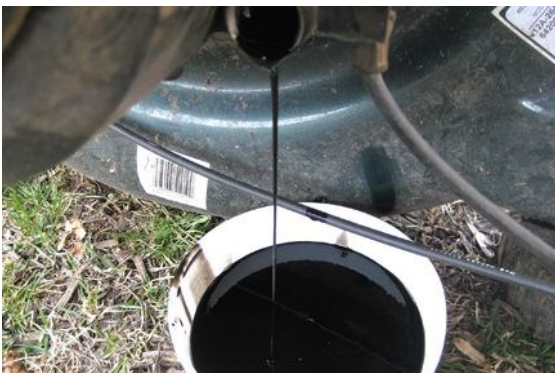
Sure, you can pay \$50 to \$75 for a tune-up, but if you're willing to invest a little sweat equity, it's not too difficult to do it yourself. Just follow these step-by-step directions for tuning up a lawn mower.



To get started, you'll need a socket wrench, spark plug wrench, screwdriver, locking pliers, drain pan, work gloves, air filter, spark plug, motor oil and gasoline.

## 1. Disconnect the spark plug

Always disconnect the spark plug before starting work on your lawn mower. It's a necessary safety feature because you'll be touching the mower blade. When the spark plug is disconnected, the mower can't accidentally start. Simply locate the spark plug wire and use your hands to disconnect the rubber boot.



## 2. Drain engine oil

If you have a drain plug: Tilt the mower back, loosen the plug with a socket wrench and then use your hands to remove it. Have a drain pan ready because oil will pour out as soon as you remove the plug.

To drain oil out through the fill tube: Remove the dipstick

and carefully pour the oil into your drain pan. Make sure to tilt the mower on the side closest to the fill tube so you don't spill oil on other parts of the mower.

Don't pour the used oil into the garbage or down the drain. Many auto body shops will dispose of used motor oil, but you might have to pay a small fee.

### 3. Replace air filter

Air filters routinely get clogged with oil and debris, so replacing your filter before each mowing season will help protect the mower's engine and ensure it runs optimally.



To replace the air filter, use a screwdriver to remove the air filter cover. Your mower should have a paper or foam air filter. All you need to do is remove the old filter and insert the new one. If it's a paper filter, make sure the pleated side faces out. Reattach the air filter cover with your screwdriver and wipe it clean.

**Air filter cost: \$5 to \$10**

### 4. Change the spark plug

Use a spark plug wrench to loosen the plug before manually removing it.

You'll notice the spark plug has an electrode and overhanging arm on the end that inserts into the mower. Make sure the new spark plug has a gap because if the arm touches the electrode, it will prevent a spark and your mower won't start.

Insert and tighten the new spark plug with your hands. Use the spark plug wrench to give it one more turn. Use caution as you tighten so you don't damage the spark plug's porcelain tip.



**Spark plug cost: \$3 to \$6**

## Smoke/Carbon monoxide detectors



*Now* is a good time to check the batteries in your smoke and carbon monoxide detectors.



## 5. Sharpen the blade

You can sharpen the blade with a metal file or bench grinder, or have a pro do it at a lawn mower repair shop.

Regardless of the method you choose, you'll need to remove the blade. Tilt the mower on its side and use locking pliers to prevent the blade from slipping. Then, use a socket wrench to unscrew the bolt that holds the blade in place. Wear a pair of work gloves to prevent cutting your hand while touching the blade.

To address minor wear and tear, clamp the blade in a vice and run a metal file along the cutting edge. For more damaged blades, you'll need to use a bench grinder. If you don't have a bench grinder or you're unsure how to use one, take the blade to a repair shop and let a pro sharpen it.

**Cost to sharpen a lawn mower blade: \$5 to \$20**

## 6. Replace oil and gas

Before adding oil, make sure the drain plug is inserted. Many push lawn mowers use SAE 10W-30 oil. Use a funnel as you pour and check levels with your dipstick. **Motor oil cost: \$3**

You should always use fresh gasoline because it loses volatility over time and can make it hard to start your lawn mower.

## 7. Reconnect the spark plug wire

The final step in your DIY lawn mower tune-up is to reattach the spark plug wire. Do this only after you're certain that the others tasks are complete and you're ready to start landscaping.

## DIY vs. professional lawn mower tune-up

It can cost less than \$30 to tune up your lawn mower. Obviously, it's cheaper to do it yourself, but you also need to factor in the time it takes to do the work and obtain parts and supplies -- and whether it's something you actually want to do.

# Buffalo Chicken Dip

**Difficulty: Easy**

**Time: 45 Minutes of cooking, 15 minutes of prep.**

## **Ingredients:**

- 4 Boneless, skinless chicken breasts (about 2.5 pounds)
- 1 12-Ounce bottle of Frank's Red Hot Sauce or other hot sauce
- 2 8-Ounce packages cream cheese
- 1 16-Ounce bottle of blue cheese or ranch salad dressing
- 8 Ounces of shredded sharp cheddar, Monterey jack or a combination of both cheeses

## **Directions**

- In a large saucepan, boil the chicken in water until cooked through (about 15 minutes).
- Drain the water and shred with two forks.
- Preheat oven to 350 degrees.
- In a 9x13 inch baking pan, combine the shredded chicken meat with the hot sauce, spreading to form an even layer.
- In a large saucepan over medium heat, combine the cream cheese and dressing, stirring until smooth and hot.
- Pour the mixture evenly over the chicken.
- Bake uncovered for 20 minutes.
- Sprinkle the shredded cheese over the top and bake uncovered for another 10 minutes.
- Let stand 10 minutes before serving.

## **Contact Us**

**Mill Grove Homeowners Association**

P.O. Box 2042

Mableton, GA 30126

[millgrovehoaboard@yahoo.com](mailto:millgrovehoaboard@yahoo.com)

Visit us on the web at [www.millgrovesmyrna.com](http://www.millgrovesmyrna.com)