



## 360 Photo/As-built Facility Survey



EXISTING SITE PHOTOGRAPH

## 360 Photo / As-Built Facility Survey

201 North St.  
Ellwood City, PA 16117

**Survey Date**  
November 8, 2012

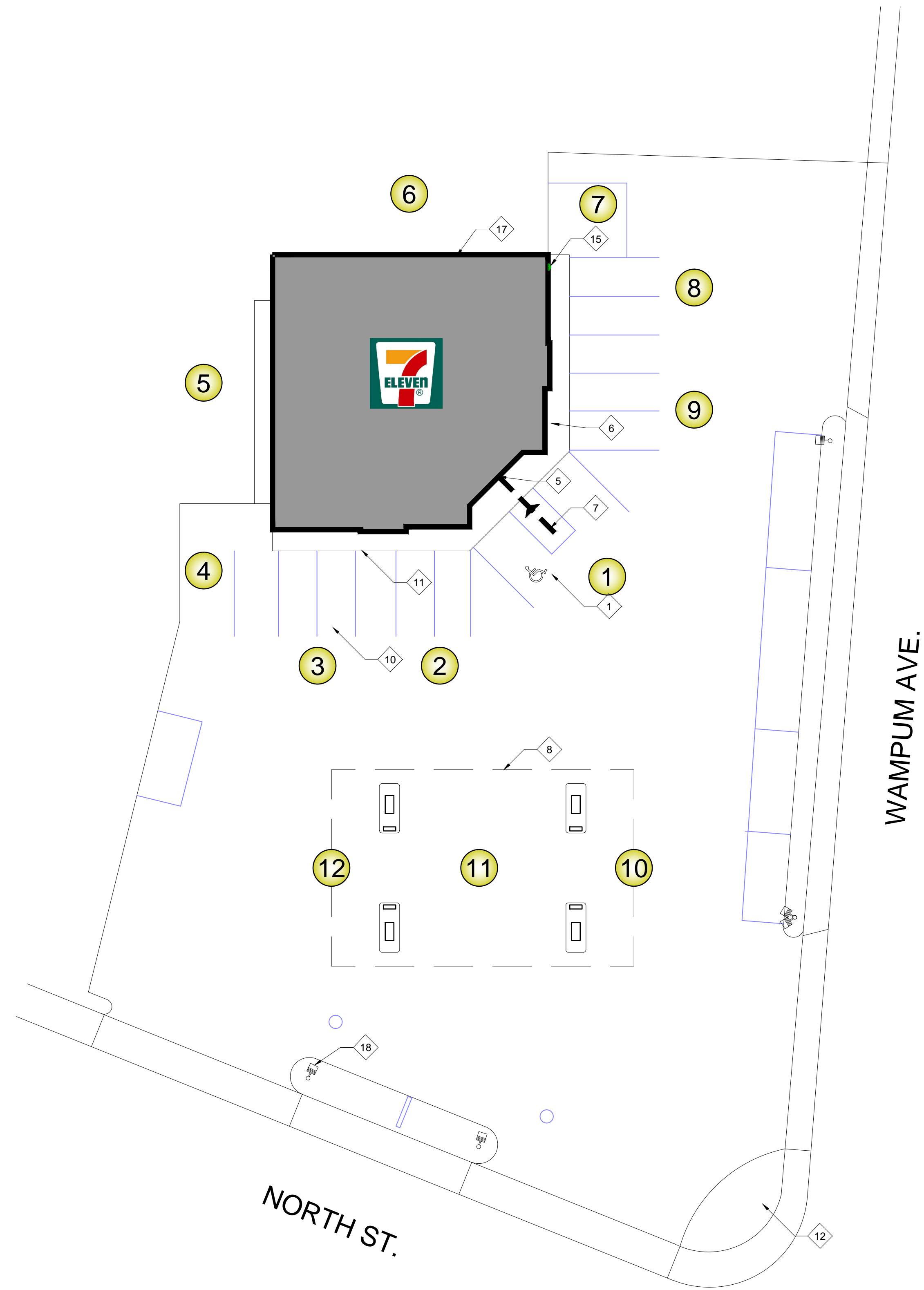
**360 Photography Survey**  
November 8, 2012



- Ⓐ A/E REVISION
- ① FIELD REVISION
- ⚠ CODE REVISION

| DATE | REV # | INITIAL |
|------|-------|---------|
| -    | -     | -       |
|      |       |         |
|      |       |         |
|      |       |         |
|      |       |         |
|      |       |         |
|      |       |         |
|      |       |         |
|      |       |         |
|      |       |         |
|      |       |         |
|      |       |         |
|      |       |         |
|      |       |         |

STORE # 36133  
 201 NORTH ST.  
 ELLWOOD, PA, 16117



N  
 SCALE: 1/16" = 1'-0"

**Site Plan**

- ① ADA PARKING STALL
- ② ISA SYMBOL
- ③ ADA PARKING POLE SIGN
- ④ CONCRETE WHEEL STOP
- ⑤ BUILDING ENTRANCE
- ⑥ CONC. WALK
- ⑦ ADA PATH OF TRAVEL
- ⑧ CANOPY LINE ABOVE
- ⑨ TRUCK LOADING DOCK
- ⑩ CUSTOMER PARKING
- ⑪ CONC. CURB
- ⑫ LANDSCAPING
- ⑬ FIRE DEPT. CONNECTION
- ⑭ COLUMNS, TYP.
- ⑮ ELECTRICAL MAIN
- ⑯ BOLLARD, TYP.
- ⑰ BUILDING OUTLINE
- ⑱ PARKING LOT LIGHTING
- ⑲ 225 KVA TRANSFORMER

- ① 360 VANTAGE POINT
- ① STILL IMAGE

SEAL

Store Number  
**36133**

DRAWN BY: RSP  
 CHECKED BY: JAE

Date  
 11-9-2012

Sheet  
**2 of 5**

**SP01**



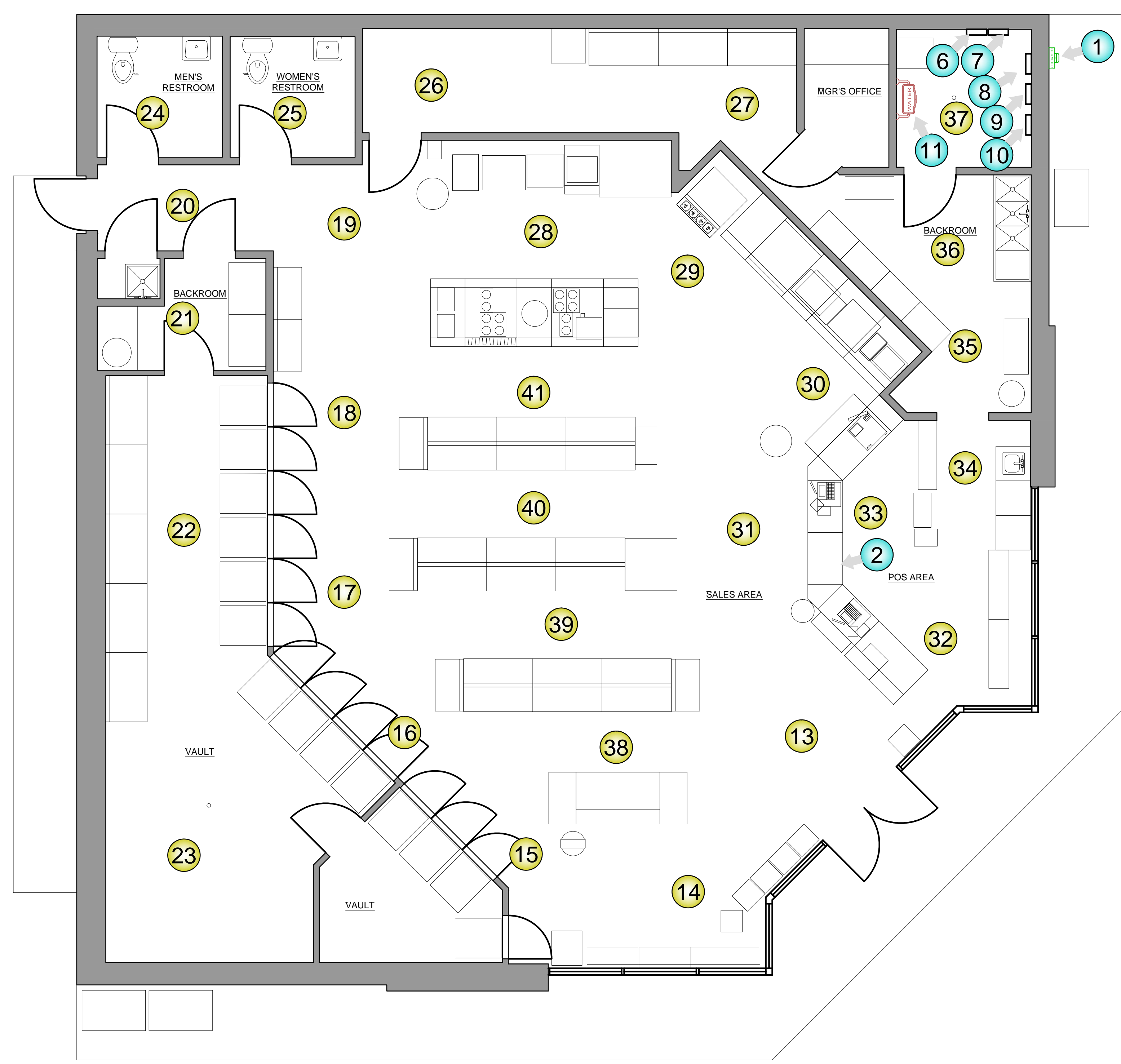
- ① A/E REVISION
- ① FIELD REVISION
- △ CODE REVISION

| DATE | REV # | INITIAL |
|------|-------|---------|
| -    | -     | -       |
|      |       |         |
|      |       |         |
|      |       |         |
|      |       |         |
|      |       |         |
|      |       |         |
|      |       |         |
|      |       |         |
|      |       |         |
|      |       |         |
|      |       |         |
|      |       |         |
|      |       |         |
|      |       |         |
|      |       |         |
|      |       |         |
|      |       |         |
|      |       |         |
|      |       |         |
|      |       |         |
|      |       |         |
|      |       |         |
|      |       |         |

STORE # 36133  
 201 NORTH ST.  
 ELLWOOD, PA, 16117

SEAL

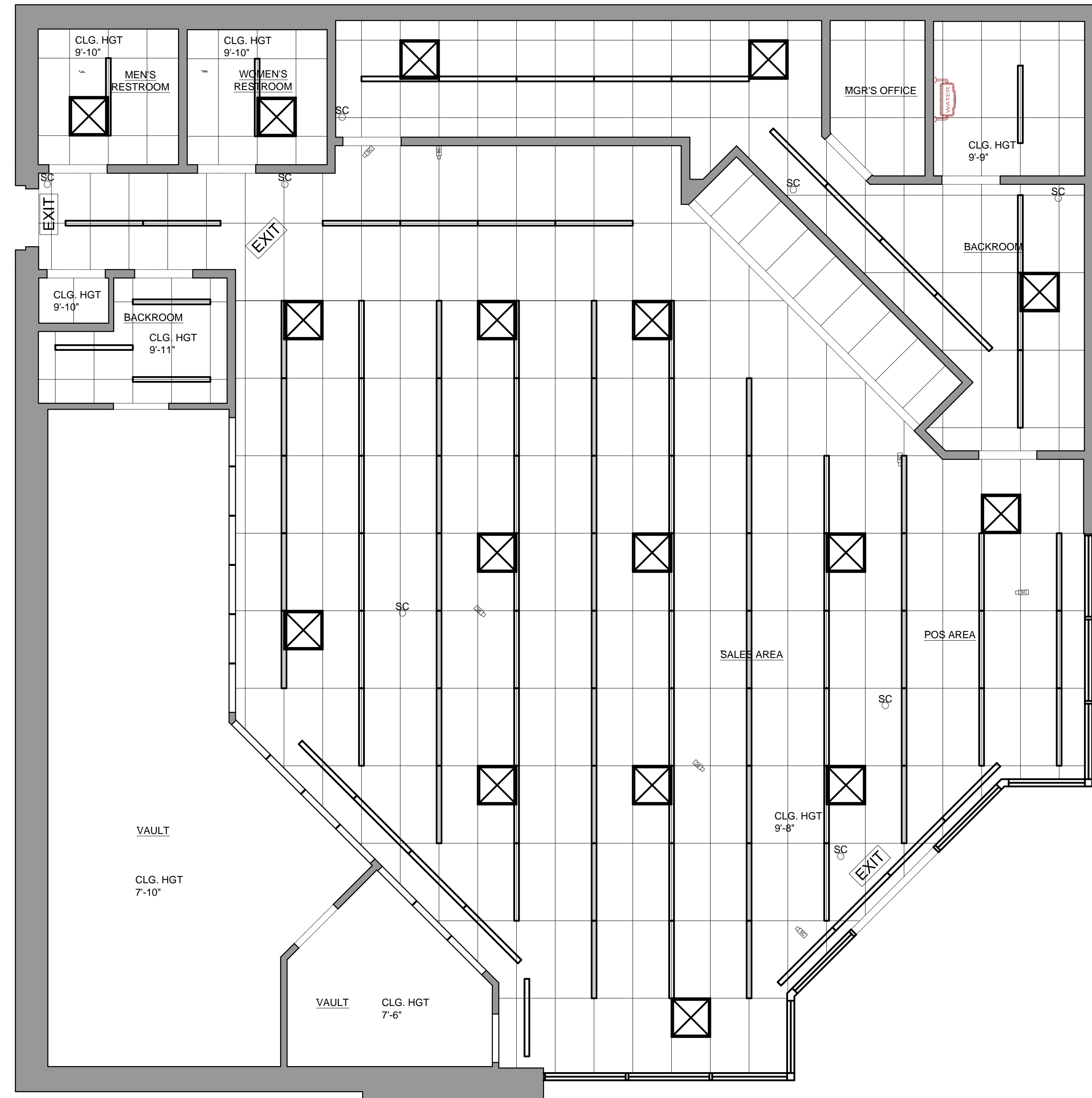
|              |           |
|--------------|-----------|
| Store Number | 36133     |
| Scale        |           |
| DRAWN BY:    | RSP       |
| CHECKED BY:  | JAE       |
| Date         | 11-9-2012 |
| Sheet        | 3 of 5    |
|              | A001      |



SCALE: 1/4" = 1'-0"

### 3DVR Plan

- ① 360 VANTAGE POINT
- ① STILL IMAGE



- ① A/E REVISION
- ① FIELD REVISION
- ① CODE REVISION

| DATE | REV # | INITIAL |
|------|-------|---------|
| -    | -     | -       |
|      |       |         |
|      |       |         |
|      |       |         |
|      |       |         |
|      |       |         |
|      |       |         |
|      |       |         |
|      |       |         |
|      |       |         |
|      |       |         |
|      |       |         |

STORE # 36133  
 201 NORTH ST.  
 ELLWOOD, PA, 16117

SEAL



## Reflected Ceiling Plan

- |                                 |                             |                            |                      |                    |                |                             |               |                              |
|---------------------------------|-----------------------------|----------------------------|----------------------|--------------------|----------------|-----------------------------|---------------|------------------------------|
| 2'x4' LIGHT FIXTURE             | ADJUSTABLE CAN LIGHT        | 2'X2' HVAC SUPPLY          | 24" HVAC SUPPLY      | FIRE EXTINGUISHER  | FIRE STROBE    | FIRE CNTRL PANEL            | CLNG HT 0'-0" | HEIGHT FROM FLOOR TO CEILING |
| 2'x2' LIGHT FIXTURE             | TRACK LIGHT                 | 2'X2' HVAC RETURN          | CARD SWIPE           | FIRE HORN          | FIRE SPRINKLER | AED AUTOMATIC DEFIBRILLATOR | ROOF HT 0'-0" | HEIGHT FROM FLOOR TO DECK    |
| FLUSH FLUORESCENT LIGHT FIXTURE | PENDANT LIGHT               | 1'X1' HVAC SUPPLY          | KEY PAD LOCK         | SMOKE DETECTOR     | EMERG. LIGHT   | FIRE EXIT SIGN              | DUCT HT 0'-0" | HEIGHT FROM FLOOR TO DUCT    |
| 4' SURFACE MOUNTED STRIP LIGHT  | WALL MOUNTED LIGHT FIXTURE  | 1'X1' HVAC RETURN/TRANSFER | FIRE ALARM PULL STA. | SEC. CONTROL PANEL | SURV. CAM.     |                             |               |                              |
| RECESSED CAN LIGHT              | SUSPENDED FLUORESCENT LIGHT | EXHAUST FAN                | CAMERA BUBBLE        | TV MONITOR         | MOTION SENSOR  |                             |               |                              |

Store Number  
**36133**

Scale

DRAWN BY: RSP

CHECKED BY: JAE

Date  
 11-9-2012

Sheet  
 4 of 5

**A002**



- ① A/E REVISION
- ① FIELD REVISION
- ① CODE REVISION

| DATE | REV # | INITIAL |
|------|-------|---------|
| -    | -     | -       |
|      |       |         |
|      |       |         |
|      |       |         |
|      |       |         |
|      |       |         |
|      |       |         |
|      |       |         |
|      |       |         |
|      |       |         |
|      |       |         |
|      |       |         |
|      |       |         |

STORE # 36133  
 201 NORTH ST.  
 ELLWOOD, PA, 16117

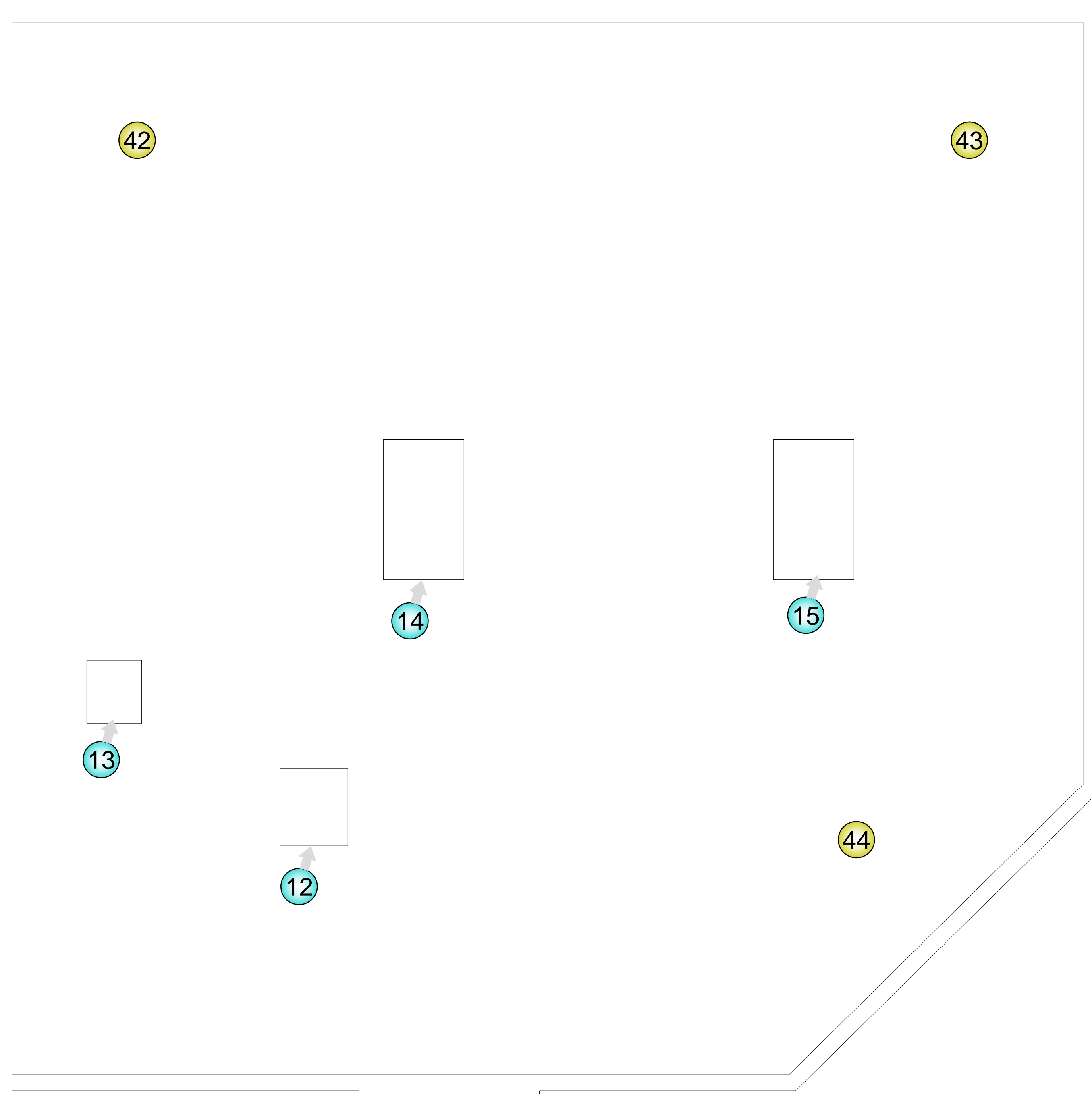
SEAL

Store Number  
**36133**

Scale  
 DRAWN BY: RSP  
 CHECKED BY: JAE  
 Date  
 11-9-2012

Sheet  
**5 of 5**

**A003**



## Roof Plan

- ① 360 VANTAGE POINT
- ① STILL IMAGE

- |                        |                   |                   |                             |
|------------------------|-------------------|-------------------|-----------------------------|
| ① PARAPET WALL         | ⑤ CARRIER ACU - 1 | ⑨ CARRIER ACU - 5 | ⑬ SHUT-OFFS                 |
| ② THRU WALL ROOF DRAIN | ⑥ CARRIER ACU - 2 | ⑩ EF-1            | ⑭ HOSHIZAKI COND. UNIT      |
| ③ ROOF LADDER HATCH    | ⑦ CARRIER ACU - 3 | ⑪ EF-2            | ⑮ COOLER/FREEZER COND. UNIT |
| ④ ROOF OVERHANG BELOW  | ⑧ CARRIER ACU - 4 | ⑫ EF-3            |                             |