

Mako Mania Weigh-In Procedure

As you near the weigh-in facility radio the Weigh Master on channel 69 to announce you have a qualifying shark to weigh. Remember a qualifying Mako male must be 71" (FL) or greater in length and a Mako female must be 83" (FL) or greater in length. Thresher must be over 66" (FL) to be scaled or count in the Mako Mania Tournament. Sharks under the minimum length will not be weighed especially if other boats are in wait. Approach the scales only when directed by the Weigh Master. There will be dock attendants to assist in tying up your vessel near the scale. Do not crowd other boats in the holding pattern or impede marina traffic. A Tournament Committee person will measure, with the appropriate Mako Meter, to survey the shark's length. When minimum length is confirmed, the shark will be lifted and scaled by the weigh-in crew. A weigh-in record will be filled out with the sharks weight, length and gender. The boat captain will be required to sign the weigh-in record. By signing he completely agrees with the information on the weigh-in record document. The Tournament Committee has the right to retain any eligible sharks for internal inspections or if a Mako is qualifying for a State Record.

MEASUREMENT

Rule (10) (FL) (fork length) means the *straight-line* measurement along the length of the fish from the tip of the upper jaw to the fork of the tail.

PROTESTS

Rule (35) If a controversy occurs, a formal protest may be submitted to the Tournament Committee for determination and decision using the approved protest form. The protest must be made in WRITING and be accompanied with a check for \$200.00 (made out to GPPCBA) BEFORE MIDNIGHT to the Tournament Committee Representative on the day the alleged infraction occurred. A protest form, with applicable instructions, will be in each Captains Bag. Provided at the Captains meeting. Any protest submitted after the day and time limit set forth herein will not be considered. If the protest stands the \$200.00 will be refunded. Decisions on a protest shall be made in the sole discretion of the Tournament Committee, and each Captain and participant agrees to be bound by that decision.

PROTEST SUBMISSION FORM

Please complete the following information for review by the Tournament Committee:

Person submitting the complaint: _____

E-Mail address: _____ Phone number: _____

Date: / / Boat number: Boat name: Check amount: \$
Check Number: _____

Description of the infraction or complaint: _____

Witnesses: _____

Phone numbers: _____

What rule number was broken? : _____ Date of alleged infraction: / /

Signature: _____: Please submit this completed Protest Submission to any Member of the

Tournament Committee along with your check for *\$200.00.

MAKOMANIA

Official Communications for the Tournament

VHF Channel 69 – channel 70 alternate
Text and or voice mail communication to 732-899-7707

Check out Procedure

All boats must display their official Boat Number on both the port and starboard sides.

Rule (4): Mandatory check-out will be required between 5:00 AM and 7:00 AM on the morning(s) you elect to fish. Check out will be via Text message to 732-899-7707. The text message must include your boat name and number, time of departure, and the inlet you are leaving from. Videos may also be used as a back up to insure no early departures.

You may not leave an approved Inlet before 5:00 am. Immediately before departing an approved inlet you must text your boat name, number and time and inlet you're leaving from to 732-899-7707. There may be video back up at each approved inlet to insure no early departures, any vessel found leaving before 5:00 am will be disqualified for that day.

You may fish any or all of the 4 tournament fishing dates. If you have checked out but are unable to fish that day you must notify the committee via text 732-899-7707 before 7:00 am with your Boat name, number, time and inlet and short explanation of why. This notice will then allow you to substitute that day for another fishing day. Note: this will not result in a refund, only the ability to fish a different tournament day. There will be no refunds after 6:00 am of the first fishing day of the tournament.

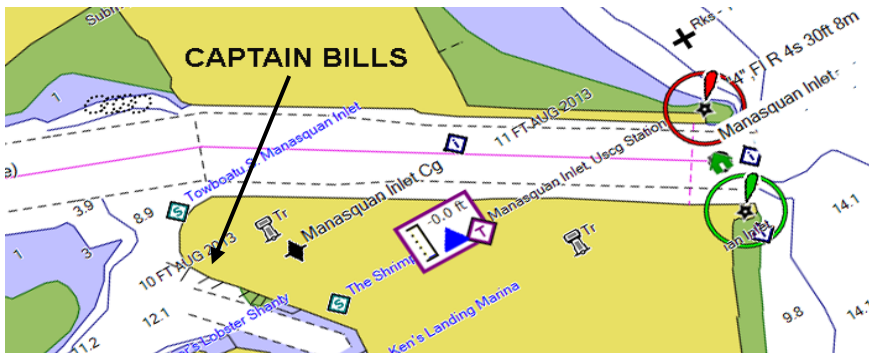
Only eligible Mako and Thresher sharks will be weighed no other sharks will qualify

There is no "WEATHER DAY". Any Captain concerned about the safety of his crew and vessel due to severe weather conditions may apply for a refund from the Tournament Committee no later than 6:00 a.m. of the first fishing day of the tournament. Refunds are subject to a \$50.00 administrative fee on entry's fees and HRC, and Whale Calcutta's are refundable less a 10% charitable donation to GPPCBA Ship Sinking Fund and the Lustgarten Foundation.

ALL PARTICIPANTS AND PASSENGERS PARTICIPATE, FISH, AND SAIL IN THIS TOURNAMENT AT THEIR OWN RISK! Fishing for sharks, and boat operation in any weather condition but particularly inclement weather, is inherently dangerous. The captain and crew are solely responsible for deciding whether or not to sail on any given day based on his or her evaluation of the boat and sea conditions. The Captain hereby agrees to inform all participants who will be on the vessel any fishing day of the inherent risk of shark fishing as well as boat and sea conditions and shall provide any and all necessary information to each participant so that he or she can make an informed decision whether or not he or she will participate.

RULE (5) Approved Inlets: Boats MUST start the tournament fishing from the Manasquan Inlet, Shark River Inlet or Barnegat Inlet to qualify for prizes.

RULE (6) All boats regardless of origin Inlet must return to the Manasquan Inlet and weigh-in at Captain Bill's Landing, Point Pleasant Beach (gas dock on Inlet Drive) to qualify for prizes. The tournament will not recognize any other weigh station.



Captain Bill's Landing: Point Pleasant Beach, NJ

as you come to the end of the Manasquan Inlet you will see a small nun buoy on the port side, turn to port entering the channel Captains Bill's will be on your left side as you turn into the channel. Notify the Tournament committee on VHF channel 69 that you have a shark to weight in.

Clarification

Explanation of Calcutta's

(A) Traditional, Shark-Man, HRC and Whale Calcutta's are first for the heaviest eligible Mako shark, or if no Mako sharks are caught then it would be the heaviest eligible Thresher shark. Rule (11)