

679 Van Sinderen Plaza, Brooklyn, NY 11207

Prime Ground Floor Commercial Space Available –Join Tenant Dollar Tree

FOR LEASE



Property Description

Prime ground floor commercial space available for lease. Spaces are on the ground floor of a new Affordable Housing building in Brooklyn, NY. Over 131 apartments to be constructed. Join tenant Dollar Tree. Located between Newport Street and New Lots Avenue. Please see floor plan and additional photos on the following page.

Property Information

Address: 679 Van Sinderen Plaza, Brooklyn, NY 11207

Neighborhood: East New York

Space Available: Space A: 6,510 Sq. Ft.

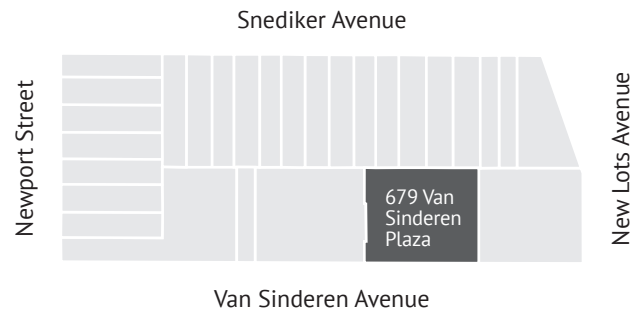
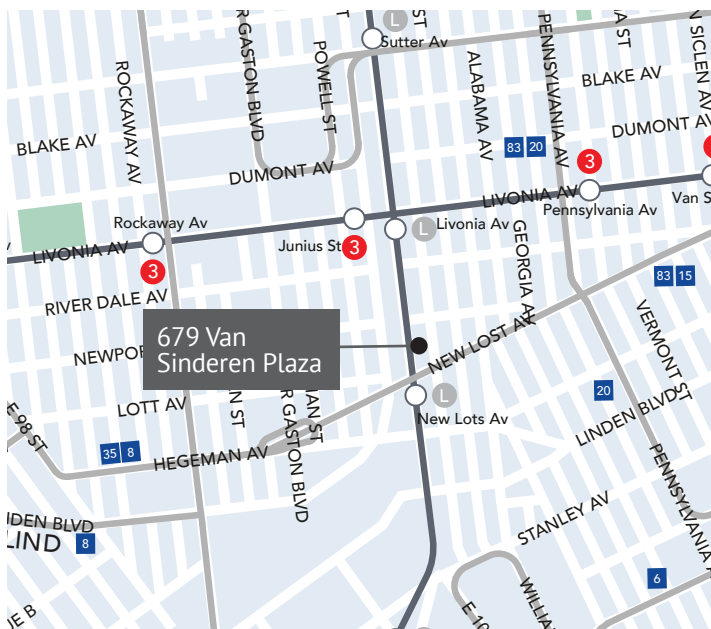
Space B: 304 Sq. Ft.

Transportation

Buses: B15, B20, B83

Subway: 2 / 3 / 4 / 5 Trains

Tax Map



PRICE AVAILABLE UPON REQUEST

For Further Information and Inspection,
Please Call Exclusive Agents:

KATHY ZAMECHANSKY

President & Broker at KZA
kzama@aol.com
(347) 386-9452

MELISSA GRASSO

Managing Director at Sholom & Zuckerbrot
mgrasso@s-z.com
(917) 651-6241

All information furnished regarding property for sale, rental or financing is from sources deemed reliable, but no representations or warranties, express or implied are made as to the accuracy thereof.



REALTY
GROUP INC.

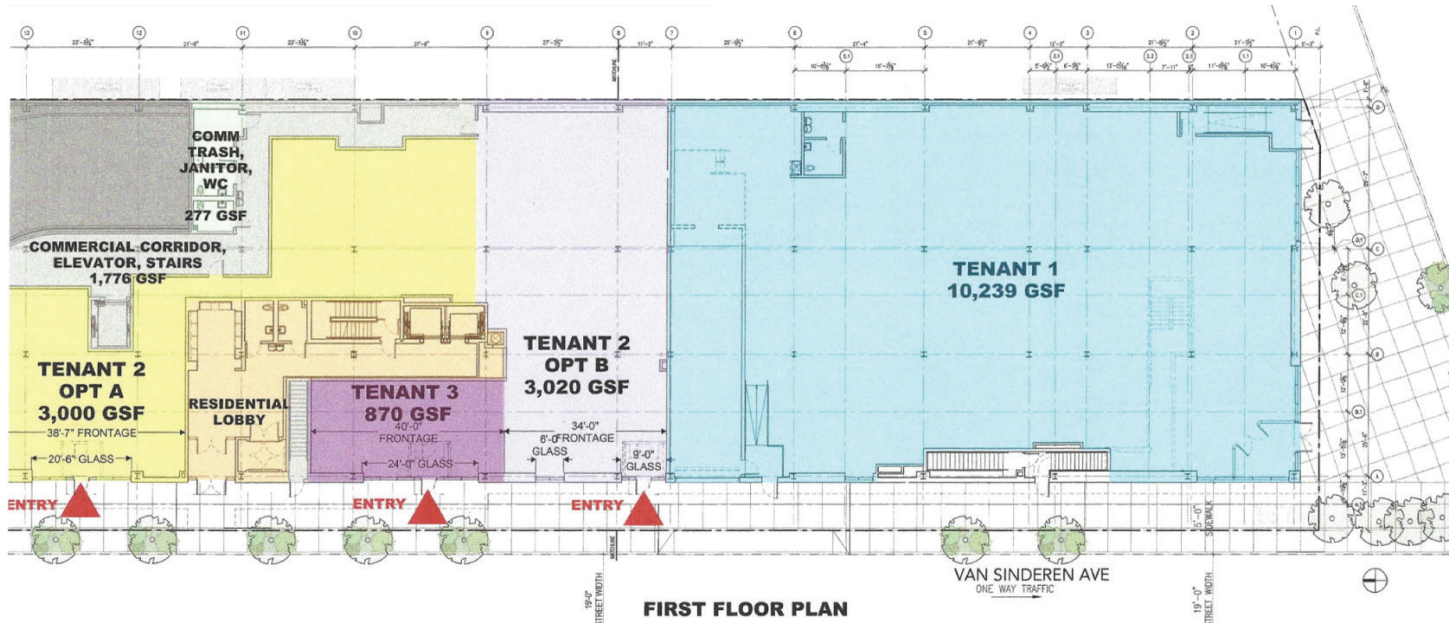


679 Van Sinderen Plaza, Brooklyn, NY 11207

Prime Ground Floor Commercial Space Available –Join Tenant Dollar Tree

FOR LEASE

Floor Plan



PRICE AVAILABLE UPON REQUEST

For Further Information and Inspection,
Please Call Exclusive Agents:

KATHY ZAMECHANSKY

President & Broker at KZA
kzama@aol.com
(347) 386-9452

MELISSA GRASSO

Managing Director at Sholom & Zuckerbrot
mgrasso@s-z.com
(917) 651-6241

All information furnished regarding property for sale,
rental or financing is from sources deemed reliable,
but no representations or warranties, express or
implied are made as to the accuracy thereof.



REALTY
GROUP INC.

**Sholom &
Zuckerbrot Realty LLC**
Established 1962