



WNCFHG NEWSLETTER

Western North Carolina Fibers/Handweavers Guild, Inc.

PO Box 644, Black Mountain, NC 28711

<http://www.wncfhg.org>

2015-2016 BOARD MEMBERS

President

Charlene St. John

Vice President

Ellen Turpening

Secretary

Nancy Crabtree

Treasurer

Lynda Feldman

Member at Large

Margaret Wills

COMMITTEES

Blue Ridge Fiber Show

Joan Berner

Community Service

Patricia Koss

Historian

Ursula Powers

Hospitality

Suzanne MacGuire

Jane Champion

Librarian

Susan Trotter

Membership

Marjorie Krueger

NC Mountain State Fair

Gail Griffith

Lucy Daley

Newsletter

Catherine Alter

Southeast Animal Fiber Fair

Ellen Turpening

Website Contact

Charlene St. John

Retreat

Pat Brown

President's Message

Charlene St. John

Dear Guild Members,

I will start by saying I was very pleased at the number of people that turned out for the last guild meeting. I saw some faces, and heard from some people that are not always in the limelight. There was good discussion, and the guild has made some decisions that needed to be made.

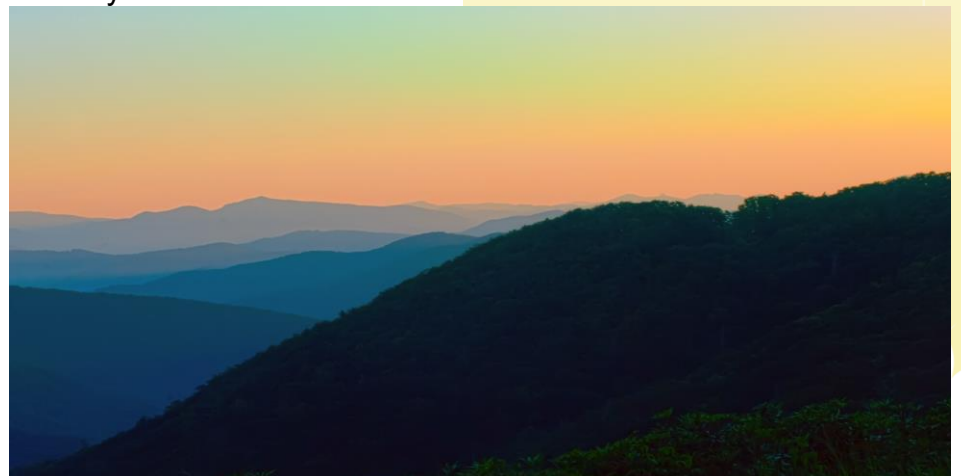
I am glad the guild has formulated what it wants to do. Now the membership needs to embrace and support these goals – individually, and as a whole. Please make a point of reading the minutes for that meeting, especially if you were not present. There is lots of information in there.

We have filled the VP position on the 2017 slate of officers. The president's position is still open. One member has started a discussion with me about it, but has not committed. Yet.

Our next business meeting will be very short as October is the month for the Guild Retreat. There will be round robin weaving, a spinning and knitting circle, and a workshop on tri-axial weaving. Drop in for a little while. You don't need to be signed up for anything! Just come and try something new, chat with your fiber friends, and be inspired to start your next great project. hope to see you all.

*We don't accomplish anything
in this world alone... and
whatever happens is the result
of the whole tapestry of one's
life and all the weavings of
individual threads form one
to another that creates
something beautiful.*

Sandra Day O'Connor



October Program: Retreat

Ellen Turpening

If you have never been to a guild retreat or it has been a long time since you have come let me fill you in. This is a time the guild members meet and get to know each other as we get involved in different fiber activities. You do not have to stay the entire time. Each year we have tried something different.

You can be involved in all activities or stay with one activity the entire time. There will be:

Spinning/knitting circle (where you can spin or knit and learn new techniques)

Weaving Area: We have looms set up with Huck Lace, Huck Lace in Dogwood pattern, M's & O's, Shadow weave, other structures for you to try out. If you are interested in bringing a warped loom please let me know.

Triaxle weaving demo and hands on practice Area: Charlene St. John will work with you to try your hand at it. Please let her know if you are interested so she can bring enough supplies.

If you are coming and have not signed the signed-up sheet at the September meeting please let me know. We have 15 people sign up so far. Don't forget to bring a lunch so we can enjoy our break time together.

Let's have fun!

Membership

Marjorie Krueger

Three new members joined the Guild in September! Let's welcome:

Sally Farmer from Asheville, NC (828-774-5300)

Liz Peterson from Asheville, NC (952-221-2510)

Marc Rosseel from Huntersville, NC (704-662-2271)

2016 GUILD CALENDAR

| | |
|-------------------------|--|
| February 13 | Winter project – Make an Apron |
| March 12 | Melanie Wilder – Student Presentation, Warren Wilson College |
| April 9 | Susan Levielle- Overshot: Timeless Beauty in Woven Construction |
| May 9 | Natural dyeing or Working with Wool |
| June 11 | Irene Heckle – Felted Creatures |
| June 24 | Kathrin Weber – Not your Grandma's Dye Pot |
| June 25 & 26 | Kathrin Weber – Weaving Workshop: Focus on the Warp |
| July 9 | Joan Berner – Sheep to Shawl Competitions |
| August 13 | Walt Turpening – Bench Making |
| September 10 | Vicki Almaroad – Magic in the Flax |
| October 8 | Retreat |
| November 12 | Mary Scott Workshop: Exploring Blocks (NO Pot Luck) |



Share & Care Committee

Sheila Church

Catherine Alter
Marjorie Warren
Ellen Turpening
Tenna Tuenge

Please keep them in your thoughts daily.
Email me if you know of anyone who would appreciate a card. sheilawc@charter.net



Blue Ridge Fiber Show '16

Joan Berner

| | |
|----------------|---------------------------------|
| | <u>Calendar</u> |
| October 1 | Exhibit opens |
| October 4 | Opening Reception/Awards |
| 2:00 – 4:00 pm | Ceremony |
| January 2 | Exhibit ends |
| January 3 | Pick up entries at NC Arboretum |
| January 14 | Shipped entries returned |

Don't Miss the Opening

The Blue Ridge Fiber Show officially opens this Saturday at The North Carolina Arboretum. Our celebration opening of the show is on Tuesday, October 4th from 2-4 PM in the Education Building. It is half price car fee at the Arboretum that day. At take-in today we saw a number of very beautiful pieces. I was so happy to see so many newer guild members enter, I know it takes courage to do it, but it is great to see all levels of work. One of the nice things about this show is the variety of pieces we receive by having entries from other areas.

Look for a plug in the *Laurel*, Under the Arboretum activities for the month and in *Spindle, Shuttle and Dyepot* coming in October. They asked for a "Press Release" and photo to highlight our upcoming show. The North Carolina Arboretum also indicated they expect a significant increase in the number of people viewing the show as it is up during their winter lights program.

Hope to see many of you Tuesday the 4th. Thanks to those of you that have entered and have helped with set up of the show.

(See pages 9 & 10 for BRFS report)

Mountain State Fair '16

Lucy Daley

The 2016 Mountain State Fair has come and gone, and once again our demonstration booth was a big hit with adults and children alike. I am grateful to all of you who volunteered to staff the booth during the ten days of the Fair. This year we had 40 volunteers donating something like 135 hours. Amazing! A number of you have told me what fun you had and how busy you were the whole time you were there. Thank you for helping to make our booth a success.

A special thank you to Guild member Judy Chandler and Deb Taliaferro, Heritage Fiber Artist, who came with Deb's truck to help set up, and to Deb, again, and Nancy Seay who helped haul everything out on Monday morning after the Fair closed. Thank you, Ursula Powers and Charlene Bertolini, for tidying everything up after the last shift. You made it so easy to clear everything out.

See you all next year! ☺



FOR SALE: LeClerc Nilus 4 harness floor loom, with 45" weaving width, solid maple front and back beams. Original bench, with 2 side pockets and mid-section storage. 6, 8, 10, 12, and 15 dent stainless steel reeds versatile, much-loved

jack loom that enables the handweaver to produce items from the delicate (huck lace) to the sturdy (rag rugs). 500 inserted-eye heddles included. Front and back aprons. Text 828.318.7892 or email Lynda Feldman at lyndafeldman@gmail.com. \$650.00; buyer arranges transportation from Black Mountain.



Western North Carolina Fibers/Handweavers Guild Meeting Minutes

WNCFHG Meeting Minutes – September 10, 2016

Nancy Crabtree

President Charlene St. John called the meeting to order at 10:05 AM.

Old Business

- Minutes of the August 2016 meeting were approved with Ursula Powers making the motion and Kathy Walsh seconding.
- Treasurer's Report for August 2016 was approved with Marjorie Warren making the motion and Kathy Walsh seconding.

Announcements

Joan Berner and Judi Jetson reminded guild members of the upcoming *Project Handmade* fashion show hosted by Local Cloth at 7PM September 22 at the Folk Art Center. Tickets are \$20. (See *August Newsletter for details.*)

Committees

- Programs: Vice President Ellen Turpening encouraged members to sign up for the October 8 Retreat. A head-count is needed for planning purposes. The November 12 program will be at the Folk Art Center. Topic will be 'Blocks' by Mary Scott. Mary is conducting the summer-winter workshop November 11, 12, and 13. Seven members have signed up for the workshop; there is room for up to twenty four people. No annual pot-luck event will be held this year. For 2017, a workshop in overshot is being considered.
- History: Ursula Powers noted that photos in the August Newsletter are labeled as February. They should be labeled as August.
- Hospitality: Susanne MacGuire thanked Kathy Walsh for providing today's treats.
- Librarian: Susan Trotter featured books from our library related to today's program topic of flax. One was about how to weave with flax. A DVD on spinning flax is also available. At the WNC Mountain State Fair, there is a wonderful display about flax.
- Membership: Marjorie Krueger indicated there were 36 members signed in today. Additionally Liz Peterson was acknowledged as a new attending member. Four guests were also present.
- WNC Mountain State Fair: Lucy Daley noted that the drop-in-and-weave location was a bit tight with two looms.
- BRFS: Marjorie Krueger BRFS Registrar updated us on the number of entries. Chair Person Joan Berner is preparing for the October 4 (Tuesday) opening of the Blue Ridge Fiber Show at the North Carolina Arboretum from 2-4 PM. She thanked members who donated items and participated in the Anything Fiber Sale fundraiser for the show. There

was a surge of response from members as a result of the recent call to arms last month. A magazine article in 'The Laurel' will appear in October about the BRFS. Assistance is still needed for set -up on Wednesday September 28 and Thursday September 29 from 10AM to 4PM (*contact Joan*). There are 76 entrants with a total of 133 entry items. Over 30 guild members entered. Eighteen states are represented (including Hawaii). Mikel Hansen will set up his beautiful antique loom for people to weave on.

Joan provided a handout of observations for discussion for future shows. (*see attachment*).

- Website: Charlene St. John indicated our old website was built on a platform that is no longer supported by GoDaddy. It was deleted – or at least taken off line recently. Michael Absner called and convinced them to put up a truncated version of the site for a short amount of time. Charlene took the initiative and entered the guild into a contract with GoDaddy. She built a new website. GoDaddy will host it and give support as needed. Ruth Howe and Charlene are in the process of getting Michael to transfer domain ownership back to the guild. It should happen shortly. The new site is ready to go as soon as the transfer occurs.
- Slate of Officers for 2017: No one has agreed to be nominated for the President or Vice President positions. Kathy Walsh will be a nominee for Member-at-Large. Nancy Crabtree (Secretary) and Lynda Feldman (Treasurer) have agreed to continue their positions.

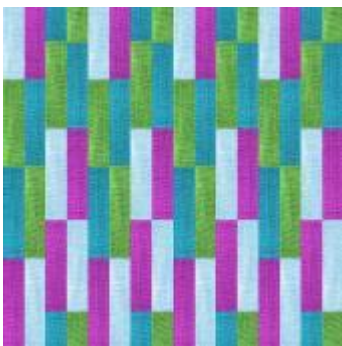
New Business

- Discussion was held whether we should continue the BRFS show at the Arboretum in 2018. No one has stepped forward to chair the event. A vote was held: 17 voted to continue versus 11 to drop. President Charlene St. John indicated we would go forward with plans for 2018 with a chairperson TBD.
- Advertising Policy: Charlene St. John had discussion that guild members who wish to list their websites as a direct link from the public portion of the WNCFHG website may do so free of charge. To enable this membership benefit, please e-mail Webmistress Charlene with your web address and a brief description of what services or products you offer. It was approved with Lynda Feldman making the motion and Kathy Walsh seconding.

Adjourn

- Walt Turpening made the motion to adjourn with Teena Tuenge seconding. All were in favor. *Show and Tell* was followed by the program 'Magic in the Flax' by Vicki Almaroad. The program was followed by an outdoor demonstration.

Submitted by Nancy Crabtree, Secretary





Treasurer's Report Lynda Feldman

Western North Carolina Fiber/Handweavers Guild
Treasurer's Report: August 2016

| | |
|------------------------------------|-----------------|
| 07/31/2016 Balance, Education Fund | \$ 2,587.37 |
| 07/31/2016 Balance, General Fund | <u>9,570.84</u> |
| July 31, 2016 Balance | 12,158.21 |

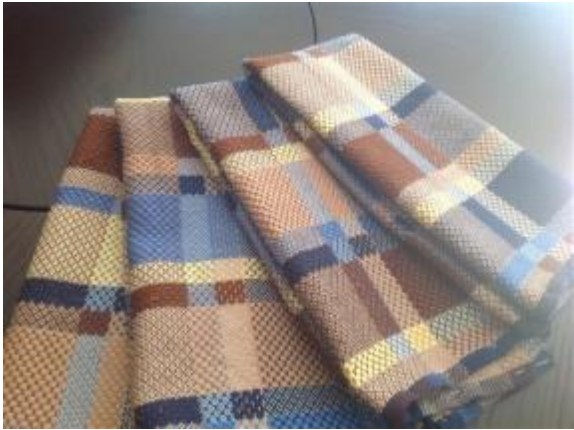
Income

| | |
|---------------------|--------------|
| 2016 Dues | \$ 25.00 |
| 2016 Workshops | 720.00 |
| Gifts/donations | <u>10.00</u> |
| Total August Income | 755.00 |

Expenses

| | |
|--------------------------------|-----------------|
| Program | (100.00) |
| Post Office Box Rental (6 mos) | (43.00) |
| Website | <u>(197.64)</u> |
| Total August Expenses | (340.64) |

| | |
|------------------------------------|-----------------|
| 08/31/2016 Balance, Education Fund | \$ 2,587.37 |
| 08/31/2016 Balance, General Fund | <u>9,985.20</u> |
| August 31, 2016 Balance | 12,572.57 |



Places Left...Hurry before they are gone!

Western North Carolina Fiber/Handweavers Guild

Summer & Winter in the Fall

Instructor: Mary Scott

2 and 1/2-day workshop, Nov 11, 12 & 13, 2016

Time: 10 am – 4 pm Friday (Nov 11)

Time: 1pm – 4 pm Saturday (Nov 12); Guild Program on “Exploring Blocks” in am from 10am-12am.

Time: 10 am – 4 pm (Sunday (Nov 13)

Location: The Folk Art Center, Asheville, NC

Max # of students: 24

Cost: \$120 per member, payable to WNCFHG, and

\$ 25 per person, payable to instructor at time of workshop.

Summer & winter is a two shuttle weave which weaves a pattern tied to a plain weave ground cloth. This is achieved by assigning two shafts (commonly 1 and 2) to serve as "tie down shafts" which holds the pattern in place. The remaining shafts are "pattern shafts," and are used to create the desired pattern. The shafts are threaded so that the tie down and pattern warp ends alternate. One shuttle is used for the tabby weft, which is usually similar to the warp. The second shuttle is used for a heavier, pattern weft.

With a 4 shaft loom this means that there are 2 shafts available for patterns so that 2 blocks (or pattern units) can be utilized. The blocks can be repeated as many times as desired, so this is where design comes in.

Experience level: In this workshop you will need to be able to warp your loom before the workshop. This workshop is not suitable for rigid heddle looms.

In this workshop you will learn

1. how to warp your loom in the Summer & Winter pattern,
2. learn about designing with blocks; You will be able to create your own designs with Summer & Winter blocks for further work on your own after the workshop.
3. how to treadle to create slightly different looks

Prior to the workshop Mary Scott will provide the warp yarn with a draft and a list of materials for you to gather and bring with you to the Folk Art Center. The \$25 fee payable to Mary covers the cost of the warp. If we get enough members to sign up the guild will pay for the warp.

**WNCFHG WORKSHOP: Summer & Winter in the Fall!
GUILD MEMBER APPLICATION**

To participate in Mary Scott's weaving workshop (Nov, 11, 12 & 13, 2016), please complete this form, sign, date and mail it **with your check for \$120.00 made payable to WNCFHG** to:

WNCFHG
PO Box 644
Black Mountain, NC 28711

Name _____ Phone _____

Email (please print) _____ Confirmation of enrollment will be sent via email.

Loom you will be using: (i.e. table loom, floor loom, 4shaft, 8shaft): _____

Favorite Colors of Yarn:

I understand that if I cannot come to the workshop, I will lose the fee paid unless I find another member to take my place.

Signed _____ Date _____, 2016

Blue Ridge Fiber Show Observations

Joan Berner

| Positives | Negatives |
|---|---|
| Great location (tho costs to get in – brings in tons of public to see show) | Lack of volunteers for fund raising |
| Free Location | Lack of volunteers for advertising |
| Helpful staff | Aging computer software |
| Entries approximately the same number as 2014 | Money for awards is not covered by entry fees |
| Good number of display pieces – Teena purchased a number in the last couple of shows | Large number of categories/subcategories – a lot of work for making ribbons |
| Beautiful display/hanging | Large number of categories/subcategories for money awards |
| Wall space allows us to hang tapestries – which we get a lot of | Large number of categories for judging – longer day |
| Volunteers for set up | Very small number of spinning entries – cost of awards far outstrips entry fees |
| Other than past entrants postcards (non-guild members get postcards) the largest category about how you heard about the show this year was internet | Registrar's work is time consuming |
| Respected show | Aging group |
| Reaches large public group | Competing (time) activities of guild members |
| Arboretum guest likely to be able to appreciate craft or art | Software for registrar is old |
| Encouraged to sell pieces | # of small misc. jobs not assigned |
| Part of Arboretum October article in the Laurel | |

What Changes Can be Made To Address Issues

Simplify BRFS to:

- Reduce/eliminate need for fundraising
- Reduce advertising costs/tasks
- Reduce/simplify categories
- Investigate registrar database changes – direct feed of electronic form into a database

Stats:

| | |
|-----------------------------|------------------|
| 5 Show Average: 83 entrants | 141 entries/show |
| This year: 76 entrants | 133 entries |
| Money Received: \$2260 | |

Cost of Awards: \$3100 + \$200 for Jrs. = \$3300 (1st - \$100 for emerging /experienced, 2nd \$50, 2 junior awards)

1. Simplify Categories

Felting Decorative
 Wearables
 Spinning Handspun in
 finished piece
 Weaving Wearables
 Decorative
 Tapestry

Awards - \$1800 + 300 (jrs) \$2200

2. Don't award by category – but by special awards:

Best use of color
 Best use of natural materials
 Etc.

Plus special awards that Charlene collects
 Less categories, less awards cost

3. Reduce amounts of awards – on a show basis – base awards on amount of money received

5. Push ability to sell through the Arboretum store as a way for artist to feel compensated

6. Offset smaller awards by encouraging people to sell their work.

Reduce advertising costs – (68% previous entrants, 16% internet – only 3 people by mag. Ad) SAFF Ad - \$50, American Craft Week \$55, Call for Entry Postcards \$75, Internet – include a couple of boost posts - \$20)

Registrar Related

- Make everything as electronic as possible (eliminate cost of renting mailbox – could be guild's mailbox, paper, printing costs, postage, paypal)
- Update software with some of existing BRFS balance to make everything electronic – forms to feed directly into database
- Returns to entrants by email

Misc. additional income:

Special listing in booklet for entrants for very minor costs

Small ads in booklet for reasonable additional costs

Jobs

| | |
|---------------------------------|--|
| Coordinator | Arrange and print booklet |
| Take in | Print and Mount tags |
| Judging | Registrar – manage electronic info and printouts |
| Set-up | Registrar's admin |
| Take down | Photographer |
| Make Awards/Ribbons | Property Storage |
| Update prospectus, entry sheets | Treasurer |
| Updates to web page | Receiver/shipper |
| Manage Facebook Page | Develop Postcards |
| | Electronic changeover |