



2022 NEW SINK PRODUCT SUPPLEMENT

THE ART OF WATER

HamatUSA is a division of Hamat Group, Israel's largest plumbing fixture manufacturer. Hamat Group specializes in the manufacturing of a wide selection of designer products for the kitchen which include faucets and kitchen sinks made from stainless steel, fireclay, granite composite, and porcelain enameled steel, as well as a wide selection of sink accessories.

For roughly 75 years Hamat Group has been a top private label faucet and fireclay producer for many leading manufacturers across the globe. Hamat Group products are now available in the HamatUSA collection. Hamat Group currently has multiple state-of-the-art manufacturing plants in Israel and Turkey that incorporate all facets of the Faucet and Fireclay production. Hamat Group maintains all US standards and is constantly investing in new technologies and innovative designs remaining at the forefront of form and function.

FAUCETS
FIRECLAY
STAINLESS
SIOSTONE
ENAMELED STEEL



2022 SINK ADDITIONS

Stainless Steel Undermount

Nero Collection	6 - 7
Rendezvous Collection Additions	8 - 9
Axiom Collection Additions	10 - 11
Classic and Enterprise Additions	12 - 13

Stainless Steel Topmount

Villa and Revive Additions	14 - 15
----------------------------------	---------

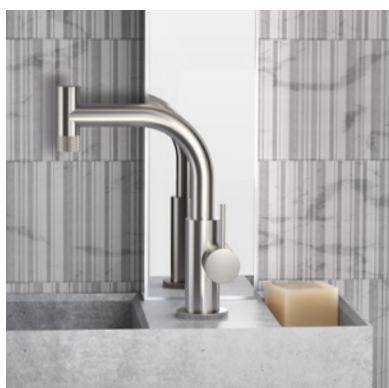
SiOStone Engineered Granite

Topmount Additions	16 - 17
Undermount Additions	18 - 19

Laundry Collection

Undermount & Topmount Additions	20 - 23
--------------------------------------	---------

Limited Lifetime Warranty	24
Terms & Conditions	25
Customer Service	25





Type 304 Premium Stainless Steel

HamatUSA sinkware is made from durable Type 304 stainless steel, an optimal mix of nickel and chromium, making our sinkware exceptionally resistant to corrosion and stains for the life of the product. It provides a hygienic, scratch-resistant and resilient surface that requires minimal care and maintenance.



SpexEdge

A beveled edge on the outer rim of select undermount sinks provides increased structural rigidity for the entire sink span and creates a smooth and finished look. SpexEdge is found only on HamatUSA sinks.



StoneShield Undercoat Protection

A marble powder based undercoating specially formulated and applied over pads. It reduces the noise of clattering dishes and running water. It also prevents condensation and thermally insulates your sink keeping hot soaking water hot for a longer period.



Sound Deadening Pads

Made of natural rubber, Sound Deadening Pads help reduce the noise of clattering dishes and running water. It is a common feature to all HamatUSA sinks.



TotalGuard+

An exclusive feature to our Rendezvous, Contrive, Hudson, Axiom and Prizm Collections. This complete wrapping of rubber pad insulation ensures thermal insulation, prevents condensation, and optimal noise reduction making them some of the quietest sinks available today.



CuVerro Shield™

White Copper - a new solid antimicrobial finish. This new PVD finish continuously kills 99.9% harmful bacteria such as MRSA Staphylococcus, E Coli, and VRE within 2 hours.



Limited Lifetime Warranty

Almost all HamatUSA sinks are covered by an industry-leading Limited Lifetime Warranty to the original purchaser against any possible defects in materials and workmanship. Two groups – our Cerasteel and Enterprise Collections – are covered with a 10-year limited warranty. We are not satisfied unless our customers are completely satisfied with our products.



ASME A112.19.3-2008



Sink Selection Guide

How to select the ideal sink for your needs.

Your Kitchen Style

Start by asking yourself whether your kitchen is traditional, transitional, rustic, or contemporary. Then determine the shape, size and features that will best suit your style of living and everyday needs. HamatUSA sink designs vary with each product family, so you're sure to find one that's just right for your kitchen, lavatory or prep area.

Material

HamatUSA sinks are available in Stainless Steel, Porcelain Enameled CeraSteel, Chelsea Fireclay, and SiOStone Granite Composite. Each material has its own performance features and distinct look.

Check Your Measurements

Choose the right sink to fit your cabinet. Sink measurements and minimum cabinet sizing are shown with each sink in this catalog.

Installation Styles

Undermount sinks are best for stone or solid surface countertops. They are mounted from the underside of the counter, leaving a zero-barrier counter surface to sweep scraps and crumbs into the sink. Topmount sinks are best if your countertop is a laminate with a pressedwood core or with solid surface countertops. With topmounts, the sink's bowl drops into a hole in the countertop and rests on the perimeter.

Number of Bowls

How will you be using your sink? A serious home-chef may want several deep bowls to accommodate stockpots and roasting pans. If you'll be using your sink primarily for rinsing dishes, a single bowl of moderate depth will suffice. When in doubt, a large and deep single bowl is the best choice.

Depth of Bowls

Deeper bowls in the 9" range will accommodate large pots and allow you to thaw larger food items. Deeper bowls also mean less splashing. Shallow bowls down to 5" are ideal for food preparation and will also accommodate a garbage disposer.

Prep Sink

A well-placed prep sink in a busy kitchen can noticeably improve flow and efficiency and can also double as a bar-sink in other areas of the house. Prep sinks of various depths and shapes can be found built-in on many HamatUSA models or purchased separately for other locations like a countertop island.

Nero PVD Collection Black Stainless Steel Sinks

UNDERMOUNT

- PVD Plated T-304 Stainless Steel
- Handmade 16 and 18 gauge sinks
- 10mm (R10) Radius Corners
- Scored Bottom
- Lustrous Satin Finish
- Total-Guard+ insulation
- Scored Bottom
- Rear Set Drains
- StoneShield Undercoating
- Sound Deadening Pads

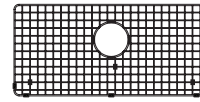


NER-3218SW

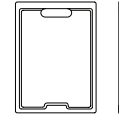
Nero Single Bowl Workstation Sink

- Fabricated with nano technology enhancing durability and scratch resistance
- 18-gauge PVD Black plated
- 10mm radius design with interchangeable sliding platform system
- 9.5" overall depth, 9" interior depth
- Rear Set Drain
- TotalGuard+ Insulation
- Fits 36" minimum cabinet

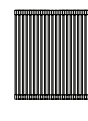
**Supplied with wooden cutting board, PVD Black multipurpose roll up mat, PVD Black drying tray, PVD wire bottom grid, and PVD Black basket strainer*



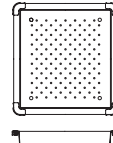
SWG-3014 BL



CUT-1316



ROL-1416-BL



DRY-1617 BL



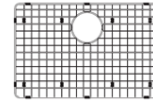
BAS-2000-BL



NER-2618S

Nero Intermediate Single Bowl

- Fabricated with nano technology enhancing durability and scratch resistance
- 18-gauge sink PVD Black plated
- 10mm radius corner and scored bottom
- Total-Guard+ Insulation
- 10" Deep bowl
- Rear Set Drain
- Fits 30" minimum cabinet



SWG-2516 BL



CUT-1518



BAS-2000-BL

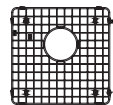


NER-1516BW

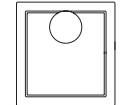
Nero Prep/Bar Workstation Sink

- Fabricated with nano technology enhancing durability and scratch resistance
- 16-gauge sink PVD Black plated
- 10mm radius corner and scored bottom
- Total-Guard+ Insulation
- 9" Deep bowl
- Rear Set Drain
- Fits 21" minimum cabinet

**Supplied with wooden cutting board, PVD Black multipurpose roll up mat, PVD Black wire bottom grid, and PVD Black basket strainer*



SWG-1517 BL



CUT-1717



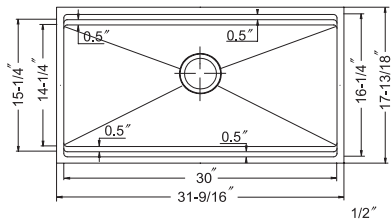
ROL-1416 BL



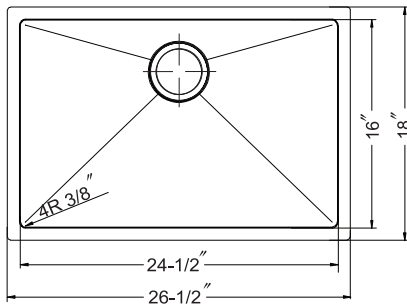
BAS-2000-BL

Specifications / Price Guide

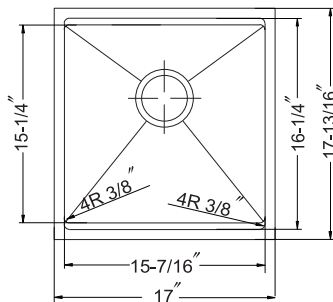
Full specifications available at www.HamatUSA.com Limited Lifetime Warranty



Model #	Description	List Price/Each
NER-3218SW	Single Box Pack	\$1,650.00
Included Accessories:		
CUT-1316	Eco Friendly Hardwood worktop Cutting Board	\$156.00
ROL-1416 BL	Multi-Purpose Roll-Up Mat	\$117.00
SWG-3014 BL	Bottom Grid	\$193.00
DRY-1617 BL	Drying tray 1-1/2" depth	\$240.00
BAS-2000 BL	Basket Strainer	\$93.60



Model #	Description	List Price/Each
NER-2618S	Single Box Pack	\$949.00
Optional Accessories:		
SWG-2516 BL	Bottom Grid	\$192.00
CUT-1518	Eco Friendly Hardwood worktop Cutting Board	\$153.60
BAS-2000-BL	Basket Strainer	\$93.60



Model #	Description	List Price/Each
NER-1516BW	Single Box Pack	\$1,049.00
Included Accessories:		
SWG-1516 BL	Bottom Grid	\$123.00
CUT-1717	Eco Friendly Hardwood worktop Cutting Board	\$165.00
ROL-1416 BL	Multi-Purpose Roll-Up Mat	\$117.00
BAS-2000-BL	Basket Strainer	\$93.60

Rendezvous Collection 16 Gauge Collection

UNDERMOUNT

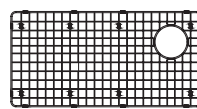
• T-304 Stainless Steel • Handmade 16 gauge sink • 10mm (R10) Radius Corners • Scored Bottom • Wooden Cutting Board • Removable, Sliding Stainless Steel Drying Tray • Total-Guard+ Insulation • StoneShield Undercoating • Sound Deadening Pads



REN-16-OS3218

- Rendezvous Offset Single Workstation Bowl
- 10mm radius design with interchangeable dual sliding platform system
 - 16 gauge
 - 10" overall depth on drain side
 - Offset Rear Right drain
 - StoneShield Undercoating over Sound Deadening Pads
 - TotalGuard+ Insulation
 - Fits 36" minimum cabinet

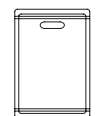
**Supplied with stainless steel drying tray, wooden cutting board, multipurpose roll-up mat, wire bottom grid, and basket strainer*



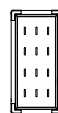
SWG-OS-3017



ROL-1416



CUT-1418



DRY-OS-817



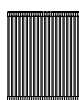
BAS-2000-SS



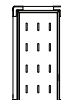
REN-16-OS2618

- Rendezvous Offset Single Workstation Bowl
- 10mm radius design with interchangeable dual sliding platform system
 - 16 gauge
 - 10" overall depth on drain side
 - Offset Rear Right drain
 - StoneShield Undercoating over Sound Deadening Pads
 - TotalGuard+ Insulation
 - Fits 30" minimum cabinet

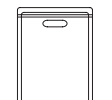
**Supplied with stainless steel drying tray, wooden cutting board, multipurpose roll-up mat, wire bottom grid, and basket strainer*



ROL-1417



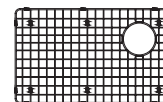
DRY-OS-817



CUT-1418



BAS-2000-SS



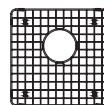
SWG-OS-2517



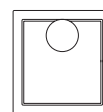
REN-16-1516B

- Rendezvous Prep/Bar Workstation Sink
- 16-gauge
 - 10mm radius corner and scored bottom
 - Total-Guard+ Insulation
 - 9" Deep bowl
 - Rear Set Drain
 - Fits 21" minimum cabinet

**Supplied with wooden cutting board, multipurpose roll-up mat, wire bottom grid, and basket strainer*



SWG-1717



CUT-1717



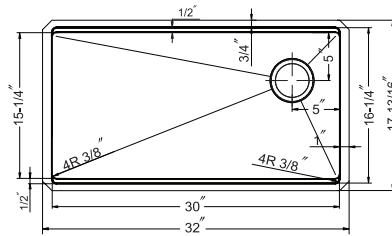
ROL-1416



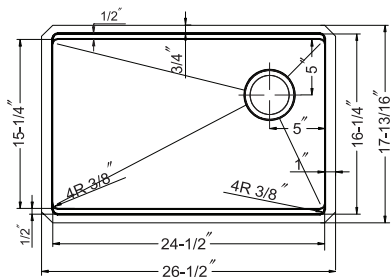
BAS-2000-SS

Specifications / Price Guide

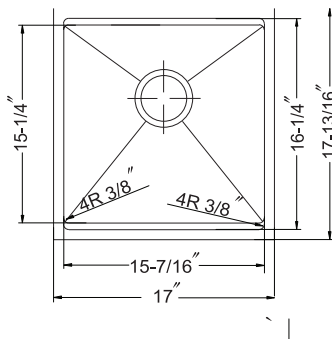
Full specifications available at www.HamatUSA.com Limited Lifetime Warranty



Model #	Description	List Price/Each
REN-16-OS3218	Single Box Pack	\$1,449.00
Included Accessories:		
CUT-1418	Eco Friendly Hardwood worktop Cutting Board	\$168.00
ROL-1416	Multi-Purpose Roll-Up Mat	\$76.80
SWG-OS-3017	Bottom Grid	\$206.00
DRY-OS-817	Drying tray 1-1/2"depth	\$210.00
BAS-2000-SS	Basket Strainer	\$45.60



Model #	Description	List Price/Each
REN-16-OS2618	Single Box Pack	\$1,379.00
Included Accessories:		
CUT-1418	Eco Friendly Hardwood worktop Cutting Board	\$168.00
ROL-1416	Multi-Purpose Roll-Up Mat	\$76.80
SWG-OS-2517	Bottom Grid	\$185.00
DRY-OS-817	Drying tray 1-1/2"depth	\$210.00
BAS-2000-SS	Basket Strainer	\$45.60



Model #	Description	List Price/Each
REN-16-1516B	Single Box Pack	\$899.00
Included Accessories:		
SWG-1717	Bottom Grid	\$102.00
CUT-1717	Eco Friendly Hardwood worktop Cutting Board	
ROL-1416	Multi-Purpose Roll-Up Mat	\$76.80
BAS-2000-SS	Basket Strainer	\$45.60

Axiom Collection

UNDERMOUNT

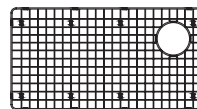
- T-304 Stainless Steel
- Handmade 16 and 18 gauge sinks
- 10mm (R10) Radius Corners
- Scored Bottom
- Total-Guard+ Insulation
- StoneShield Undercoating
- Sound Deadening Pads



AXI-OS3218S

Axiom Offset Large Single Bowl

- 16 gauge
- 10mm radius corner and scored bottom
- StoneShield Undercoating over Sound Deadening Pads
- Total-Guard+ Insulation
- 10" Deep bowl
- Offset Rear Right drain
- Fits 36" minimum cabinet



SWG-OS-3016



CUT-1518



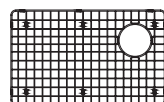
BAS-2000-SS



AXI-2718S

Axiom Medium Single Bowl

- 18 gauge
- 10mm radius corner and scored bottom
- StoneShield Undercoating over Sound Deadening Pads
- Total-Guard+ Insulation
- 10" Deep bowl
- Rear set drain
- Fits 30" minimum cabinet



SWG-2517



CUT-1518



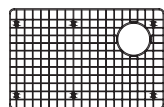
BAS-2000-SS



AXI-OS2618S

Axiom Offset Medium Single Bowl

- 16 gauge
- 10mm radius corner and scored bottom
- StoneShield Undercoating over Sound Deadening Pads
- Total-Guard+ Insulation
- 10" Deep bowl
- Offset Rear Right drain
- Fits 30" minimum cabinet



SWG-OS-2516



CUT-1518



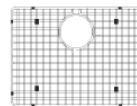
BAS-2000-SS



AXI-2318-12

Axiom 12" Deep Laundry Sink

- 18 gauge
- 10mm radius corner and scored bottom
- StoneShield Undercoating over Sound Deadening Pads
- Total-Guard+ Insulation
- 12" Extra Deep bowl
- Rear set drain
- Fits 30" minimum cabinet



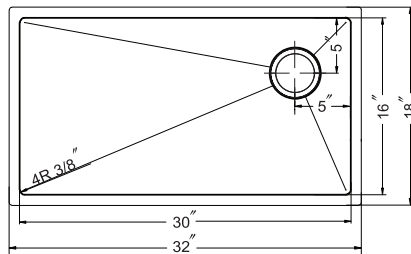
SWG-2116



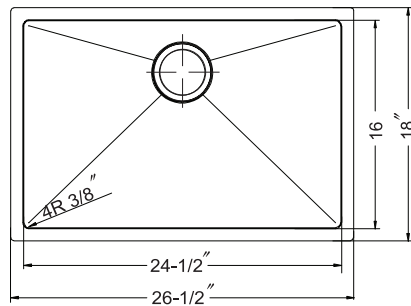
BAS-2000-SS

Specifications / Price Guide

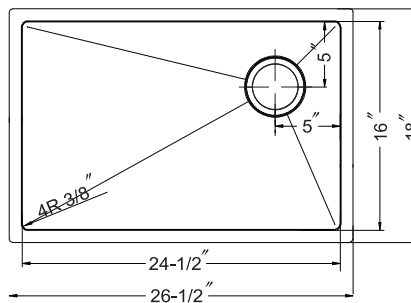
Full specifications available at www.HamatUSA.com Limited Lifetime Warranty



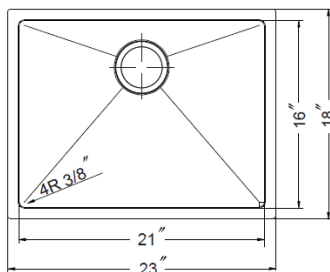
Model #	Description	List Price/Each
AXI-OS3218S	Single Box Pack	\$795.00
Optional Accessories:		
CUT-1518	Eco Friendly Hardwood worktop Cutting Board	\$153.60
SWG-OS-3016	Bottom Grid	\$202.00
BAS-2000-SS	Basket Strainer	\$45.60



Model #	Description	List Price/Each
AXI-2718S	Single Box Pack	\$739.00
Optional Accessories:		
CUT-1518	Eco Friendly Hardwood worktop Cutting Board	\$153.60
SWG-2517	Bottom Grid	\$185.00
BAS-2000-SS	Basket Strainer	\$45.60



Model #	Description	List Price/Each
AXI-OS2618S	Single Box Pack	\$739.00
Optional Accessories:		
CUT-1518	Eco Friendly Hardwood worktop Cutting Board	\$153.60
SWG-OS2516	Bottom Grid	\$180.00
BAS-2000-SS	Basket Strainer	\$45.60



Model #	Description	List Price/Each
AXI-2318-12	Single Box Pack	\$729.00
Optional Accessories:		
SWG-2116	Bottom Grid	\$136.80
BAS-2000-SS	Basket Strainer	\$45.60

Classic and Enterprise Collections

UNDERMOUNT

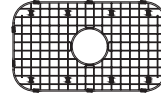
• T-304 Stainless Steel • 18 gauge sinks • Lustrous Satin with Highlighted Rim • SpexEdge • StoneShield Undercoating • Sound Deadening Pads



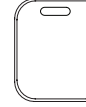
CLA-2718S

Classic Medium Single Bowl

- 18 gauge
- 9" deep bowl
- StoneShield Undercoating over Sound Deadening Pads
- SpexEdge
- Fits 30" minimum cabinet



SWG-2516



CUT-1417



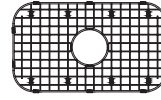
BAS-2000-SS



ENT-2718S

Classic Medium Single Bowl

- 18 gauge
- 9" deep bowl
- StoneShield Undercoating over Sound Deadening Pads
- SpexEdge
- Fits 30" minimum cabinet



SWG-2516



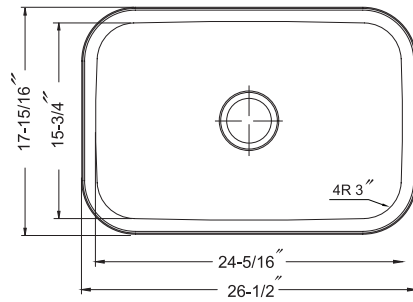
CUT-1417



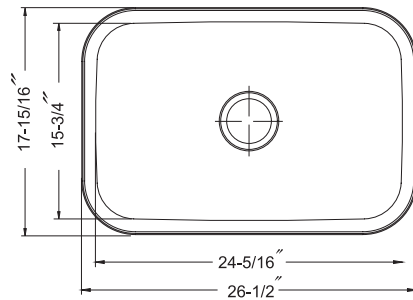
BAS-2000-SS

Specifications / Price Guide

● Full specifications available at www.HamatUSA.com ● Limited Lifetime Warranty on Classic Collection ● 10-Year Limited Warranty on Enterprise Collection



Model #	Description	List Price/Each
CLA-2718S-1	Single Box Pack, Sink Only	\$499.00
CLA-2718S-20	Nested Bulk Pack, Sink Only	\$419.00
Optional Accessories:		
SWG-2516	Bottom Grid	\$180.00
BAS-2000-SS	Basket Strainer	\$45.60
CUT-1417	Eco Friendly Hardwood worktop Cutting Board	\$122.40



Model #	Description	List Price/Each
ENT-2718S-1	Single Box Pack, Sink Only	\$379.00
ENT-2718S-20	Nested Bulk Pack, Sink Only	\$319.00
Optional Accessories:		
SWG-2516	Bottom Grid	\$180.00
BAS-2000-SS	Basket Strainer	\$45.60
CUT-1417	Eco Friendly Hardwood worktop Cutting Board	\$122.40

Villa and Revive Collections

TOPMOUNT

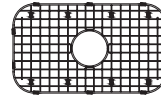
● T-304 Stainless Steel ● 18 gauge sinks ● Lustrous Satin with Highlighted Rim ● StoneShield Undercoating ● Sound Deadening Pads ● SpexEdge



VIL-2718ST

Villa Classic Medium Single Bowl

- 18 gauge
- 9" deep bowl
- StoneShield Undercoating over Sound Deadening Pads
- SpexEdge
- Rear set drain
- Fits 30" minimum cabinet



SWG-2516



CUT-1417



BAS-2000-SS



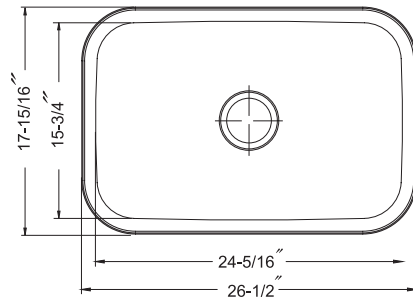
REV-2522ST-12-1

Revive 12" Deep Laundry Sink

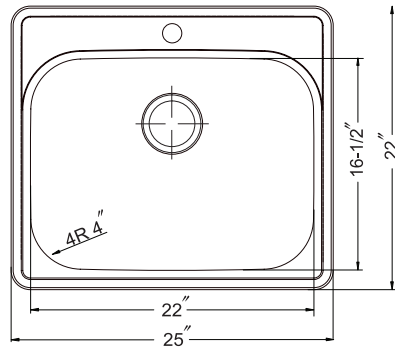
- 18 Gauge
- High-Polished edge
- Lustrous satin
- StoneShield Undercoating over Sound Deadening Pads
- 1 hole
- Fits 30" minimum cabinet
- 12" Extra Deep Bowl



BAS-2000-SS



Model #	Description	List Price/Each
VIL-2718ST	Single Box Pack, Sink Only	\$499.00
Optional Accessories:		
SWG-2516	Bottom Grid	\$180.00
BAS-2000-SS	Basket Strainer	\$45.60
CUT-1417	Eco Friendly Hardwood worktop Cutting Board	\$122.40



Model #	Description	List Price/Each
REV-2522ST-12-1-1	Single Box Pack, Sink Only	\$599.00
REV-2522ST-12-1-20	Nested Bulk Pack, Sink Only	\$538.00
Optional Accessories:		
BAS-2000-SS	Basket Strainer	\$45.60

SiOStone Collection Engineered Quartz Granite Sinks

TOPMOUNT

● Heat and thermal shock resistant ● Non-porous surface resists stains, chips and scratches ● Naturally Antimicrobial



SiO-3017ST

SiOStone Large Single Bowl

- Extra-large single bowl
- Rear set drain
- 10" overall depth; 9.5" interior depth
- 4 pre-scored, and 1 pre-drilled hole(s)
- Topmount
- Fits 36" minimum cabinet

SiO-3017ST-WH

White

SiO-3017ST-BL

Black

SiO-3017ST-MO

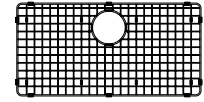
Mocha

SiO-3017ST-SD

Sand

SiO-3017ST-SL

Slate



CWG-2815



SiO-2917DT

SiOStone 50/50 Double Bowl

- Classic efficiency using a double equal bowl
- Rear set drain
- 10" overall depth; 9.5" interior depth
- 4 pre-scored, and 1 pre-drilled hole(s)
- Topmount
- Fits 36" minimum cabinet

SiO-2917DT-WH

White

SiO-2917DT-BL

Black

SiO-2917DT-MO

Mocha

SiO-2917DT-SD

Sand

SiO-2917DT-SL

Slate



CWG-1214



SiO-2317ST

SiOStone Single Bowl

- Spacious single bowl
- Rear set drain
- 9.5" overall depth; 9" interior depth
- 4 pre-scored, and 1 pre-drilled hole(s)
- Topmount
- Fits 30" minimum cabinet

SiO-2317ST-WH

White

SiO-2317ST-BL

Black

SiO-2317ST-MO

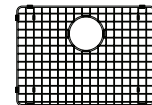
Mocha

SiO-2317ST-SD

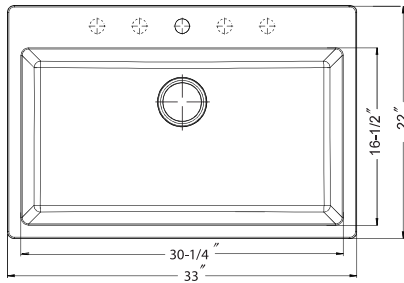
Sand

SiO-2317ST-SL

Slate



CWG-2115

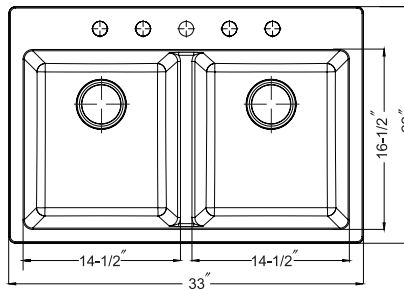


Model #	Description	List Price/Each
SiO-3017ST-WH	White Single Box Pack, 4 pre-scored, and 1 pre-drilled hole(s), Sink only	\$754.00
SiO-3017ST-BL	Black Single Box Pack, 4 pre-scored, and 1 pre-drilled hole(s), Sink only	\$754.00
SiO-3017ST-MO	Mocha Single Box Pack, 4 pre-scored, and 1 pre-drilled hole(s), Sink only	\$754.00
SiO-3017ST-SD	Sand Single Box Pack, 4 pre-scored, and 1 pre-drilled hole(s), Sink only	\$754.00
SiO-3017ST-SL	Slate Single Box Pack, 4 pre-scored, and 1 pre-drilled hole(s), Sink only	\$754.00

Optional Accessories:

CWG-2815	Bottom Grid	\$135.00
----------	-------------	----------

See Main Catalog for Basket Strainer options

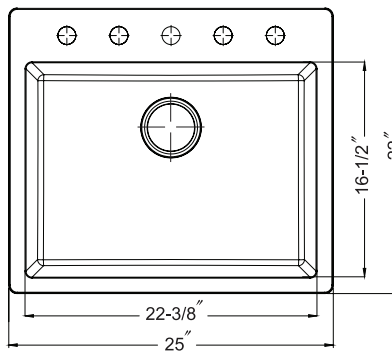


Model #	Description	List Price/Each
SiO-2917DT-WH	White Single Box Pack, 4 pre-scored, and 1 pre-drilled hole(s), Sink only	\$718.00
SiO-2917DT-BL	Black Single Box Pack, 4 pre-scored, and 1 pre-drilled hole(s), Sink only	\$718.00
SiO-2917DT-MO	Mocha Single Box Pack, 4 pre-scored, and 1 pre-drilled hole(s), Sink only	\$718.00
SiO-2917DT-SD	Sand Single Box Pack, 4 pre-scored, and 1 pre-drilled hole(s), Sink only	\$718.00
SiO-2917DT-SL	Slate Single Box Pack, 4 pre-scored, and 1 pre-drilled hole(s), Sink only	\$718.00

Optional Accessories:

CWG-1214	Bottom Grid	\$92.00
----------	-------------	---------

See Main Catalog for Strainer Basket Options



Model #	Description	List Price/Each
SiO-2317ST-WH	White Single Box Pack, 4 pre-scored, and 1 pre-drilled hole(s), Sink only	\$629.00
SiO-2317ST-BL	Black Single Box Pack, 4 pre-scored, and 1 pre-drilled hole(s), Sink only	\$629.00
SiO-2317ST-MO	Mocha Single Box Pack, 4 pre-scored, and 1 pre-drilled hole(s), Sink only	\$629.00
SiO-2317ST-SD	Sand Single Box Pack, 4 pre-scored, and 1 pre-drilled hole(s), Sink only	\$629.00
SiO-2317ST-SL	Slate Single Box Pack, 4 pre-scored, and 1 pre-drilled hole(s), Sink only	\$629.00

Optional Accessories:

CWG-2115	Bottom Grid	\$128.00
----------	-------------	----------

See Main Catalog for Strainer Basket Options

SiOStone Collection Engineered Quartz Granite Sinks

UNDERMOUNT

- Heat and thermal shock resistant
- Non-porous surface resists stains, chips and scratches
- Naturally Antimicrobial



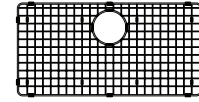
SiO-3017SU

SiOStone Large Single Bowl

- Extra large single bowl
- Rear set drain
- 9.5" deep bowl
- Undermount
- Fits 36" minimum cabinet

SiO-3017SU-WH
SiO-3017SU-BL
SiO-3017SU-MO
SiO-3017SU-SD
SiO-3017SU-SL

White
Black
Mocha
Sand
Slate



CWG-2815



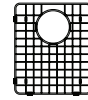
SiO-2917DU

50/50 Double Bowl

- Classic efficiency using a double equal bowl
- Rear set drain
- 9.5" deep bowl
- Undermount
- Fits 36" minimum cabinet

SiO-2917DU-WH
SiO-2917DU-BL
SiO-2917DU-MO
SiO-2917DU-SD
SiO-2917DU-SL

White
Black
Mocha
Sand
Slate



CWG-1214



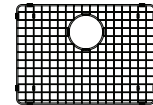
SiO-2317SU

SiOStone Single Bowl

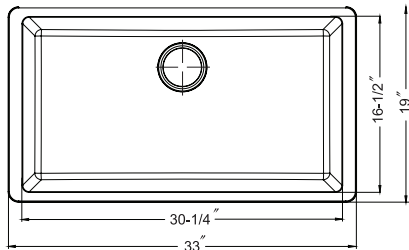
- Spacious single bowl
- Rear set drain
- 9" deep bowl
- Undermount
- Fits 30" minimum cabinet

SiO-2317SU-WH
SiO-2317SU-BL
SiO-2317SU-MO
SiO-2317SU-SD
SiO-2317SU-SL

White
Black
Mocha
Sand
Slate



CWG-2115

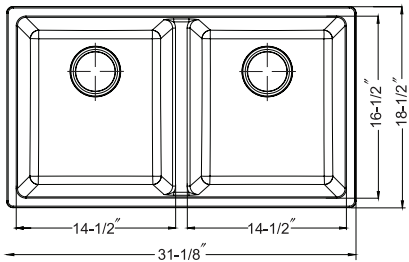


Model #	Description	List Price/Each
SiO-3017SU-WH	White Single Box Pack, Sink only	\$778.00
SiO-3017SU-BL	Black Single Box Pack, Sink only	\$778.00
SiO-3017SU-MO	Mocha Single Box Pack, Sink only	\$778.00
SiO-3017SU-SD	Sand Single Box Pack, Sink only	\$778.00
SiO-3017SU-SL	Slate Single Box Pack, Sink only	\$778.00

Optional Accessories

CWG-2815	Bottom Grid	\$135.00
----------	-------------	----------

See Main Catalog for Strainer Basket Options

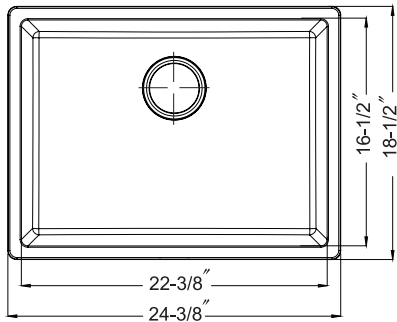


Model #	Description	List Price/Each
SiO-2917DU-WH	White Single Box Pack, Sink only	\$766.00
SiO-2917DU-BL	Black Single Box Pack, Sink only	\$766.00
SiO-2917DU-MO	Mocha Single Box Pack, Sink only	\$766.00
SiO-2917DU-SD	Sand Single Box Pack, Sink only	\$766.00
SiO-2917DU-SL	Slate Single Box Pack, Sink only	\$766.00

Optional Accessories

CWG-1214	Bottom Grid	\$92.00
----------	-------------	---------

See Main Catalog for Strainer Basket Options



Model #	Description	List Price/Each
SiO-2317SU-WH	White Single Box Pack, Sink only	\$689.00
SiO-2317SU-BL	Black Single Box Pack, Sink only	\$689.00
SiO-2317SU-MO	Mocha Single Box Pack, Sink only	\$689.00
SiO-2317SU-SD	Sand Single Box Pack, Sink only	\$689.00
SiO-2317SU-SL	Slate Single Box Pack, Sink only	\$689.00

Optional Accessories

CWG-2115	Bottom Grid	\$128.00
----------	-------------	----------

See Main Catalog for Strainer Basket Options

Laundry Collection

UNDERMOUNT &
TOPMOUNT

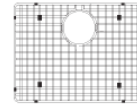
• Extra-Deep Sinks • Ideal for Laundry Room Applications



AXI-2318-12

Axiom 12" Deep Laundry Sink

- 18 gauge
- 10mm radius corner and scored bottom
- StoneShield Undercoating over Sound Deadening Pads
- Total-Guard+ Insulation
- 12" Extra Deep bowl
- Rear set drain
- Fits 30" minimum cabinet



SWG-2116



BAS-2000-SS



REV-2522ST-12-1

Revive 12" Deep Laundry Sink

- 18 Gauge
- High-Polished edge
- Lustrous satin
- StoneShield Undercoating over Sound Deadening Pads
- 1 hole
- Fits 30" minimum cabinet
- 12" Extra Deep Bowl



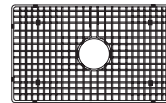
BAS-2000-SS



CHE-2619SU-WH White CHE-2619SU-BQ Biscuit CHE-2619SU-MB Matte Black CHE-2619SU-MG Matte Grey

Chelsea Undermount 26" Single Bowl Sink

- Fits 30" minimum cabinet
- Center drain
- Overall depth 10.5", interior depth 9.75"
- Boxed weight 80 lbs.



SWG-2215F



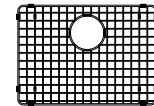
SiO-2317ST

SiOStone Single Bowl

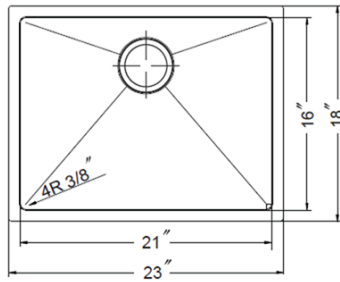
- Spacious single bowl
- Rear set drain
- 9.5" overall depth; 9" interior depth
- 4 pre-scored, and 1 pre-drilled hole(s)
- Topmount
- Fits 30" minimum cabinet

SiO-2317ST-WH
SiO-2317ST-BL
SiO-2317ST-MO
SiO-2317ST-SD
SiO-2317ST-SL

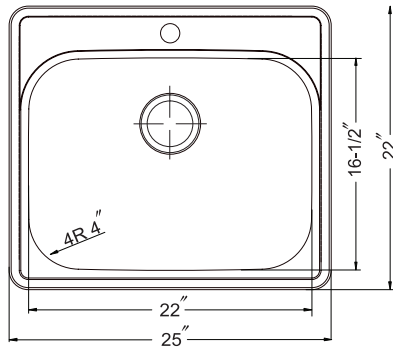
White
Black
Mocha
Sand
Slate



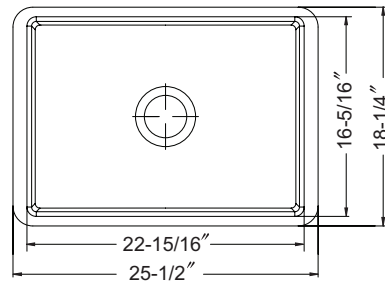
CWG-2115



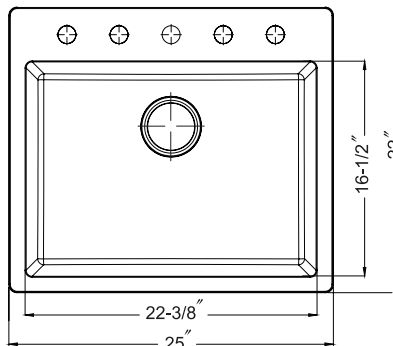
Model #	Description	List Price/Each
AXI-2318-12	Single Box Pack	\$729.00
Optional Accessories:		
SWG-2116	Bottom Grid	\$136.80
BAS-2000-SS	Basket Strainer	\$45.60



Model #	Description	List Price/Each
REV-2522ST-12-1-1	Single Box Pack, Sink Only	\$599.00
REV-2522ST-12-1-20	Nested Bulk Pack, Sink Only	\$538.00
Optional Accessories:		
BAS-2000-SS	Basket Strainer	\$45.60



Model #	Description	List Price/Each
CHE-2619SU-WH	Undermount Single bowl, White, Sink only	\$1,138.80
CHE-2619SU-BQ	Undermount Single bowl, Biscuit, Sink only	\$1,252.80
CHE-2619SU-MB	Undermount Single bowl, Matte Black, Sink only	\$1,309.20
CHE-2619SU-MG	Undermount Single bowl, Matte Grey, Sink only	\$1,309.20
Optional Accessories		
SWG-2215F	Bottom Grid	\$148.80
BAS-2000-SS	Stainless Steel Basket Strainer	\$45.60



Model #	Description	List Price/Each
SIO-2317ST-WH	White Single Box Pack, 4 pre-scored, and 1 pre-drilled hole(s), Sink only	\$629.00
SIO-2317ST-BL	Black Single Box Pack, 4 pre-scored, and 1 pre-drilled hole(s), Sink only	\$629.00
SIO-2317ST-MO	Mocha Single Box Pack, 4 pre-scored, and 1 pre-drilled hole(s), Sink only	\$629.00
SIO-2317ST-SD	Sand Single Box Pack, 4 pre-scored, and 1 pre-drilled hole(s), Sink only	\$629.00
SIO-2317ST-SL	Slate Single Box Pack, 4 pre-scored, and 1 pre-drilled hole(s), Sink only	\$629.00
Optional Accessories		
CWG-2115	Bottom Grid	\$128.00
See Main Catalog for Strainer Basket Options		

Laundry Collection

UNDERMOUNT &
TOPMOUNT

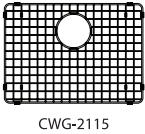
● Extra-Deep Sinks ● Ideal for Laundry Room Applications



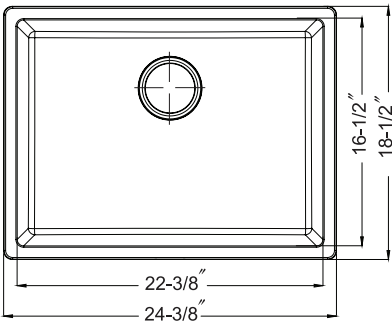
SiO-2317SU
SiOStone Single Bowl

- Spacious single bowl
- Rear set drain
- 9.5" overall depth; 9" interior depth
- Undermount
- Fits 30" minimum cabinet

SiO-2317SU-WH White
SiO-2317SU-BL Black
SiO-2317SU-MO Mocha
SiO-2317SU-SD Sand
SiO-2317SU-SL Slate



CWG-2115



Model #	Description	List Price/Each
SiO-2317SU-WH	White Single Box Pack, Sink only	\$689.00
SiO-2317SU-BL	Black Single Box Pack, Sink only	\$689.00
SiO-2317SU-MO	Mocha Single Box Pack, Sink only	\$689.00
SiO-2317SU-SD	Sand Single Box Pack, Sink only	\$689.00
SiO-2317SU-SL	Slate Single Box Pack, Sink only	\$689.00

Optional Accessories

CWG-2115	Bottom Grid	\$128.00
See Main Catalog for Strainer Basket Options		

LIMITED LIFETIME WARRANTY

HamatUSA warrants all the mechanical parts to be free from manufacturing defects in material and workmanship for a "Lifetime". "Lifetime" is defined as the period which the original consumer owns the home in which the HamatUSA "product(s)" are installed. If any product proves to be defective during the warranty period to the original owner, HamatUSA will provide, at its option, free of charge replacement parts or will replace the product. This warranty does not cover parts or finishes that have been improperly installed, damaged, subjected to misuse, abuse or used in a location other than a residential indoor kitchen. Faucet(s) subjected to abrasive cleaning, such as scratching or scuffing, or corrosive agents, including, but not limited to, bleach, ammonia or alcohol are not covered by this warranty.

LIMITED LIFETIME WARRANTY on the fixed components of all stainless-steel sinks including the Nero Collection means that they are ensured against defects of material and workmanship. This warranty is limited to defects or damages resulting from a normal residential use and does not cover the following: surface corrosion (chemical or natural), scuffs or scratches, misuse, abnormal or abusive use, dents, deformations caused by impact, common wear and tear, improper installation, care and/or maintenance, commercial use, environmental factors causing damage, improper application such as exposure to corrosive chemicals and photographic solutions, shipping or freight damage.

The warranty does not cover shipping costs, labor costs or any other costs associated with the installation or replacement of the sink, faucet or part(s) and are extended only to the original consumer, who purchased the product. HamatUSA, at its discretion, may repair or replace the product or product component part(s) necessary to restore the product to good working condition. HamatUSA reserves the right to inspect the installation prior to actual replacement of the product or component part(s). The warranty applies only to the original owner, providing the product has been installed in accordance with the installation instructions, used as recommended and installed in a residential indoor application. HamatUSA is not responsible or liable for indirect, special or consequential damages arising out of or in connection with the use or performance of the product and its liability under this warranty is limited to replacement of the defective material. The manufacturer makes no additional warranties, expressed or implied, and any implied warranty including that of merchantability or fitness for a particular purpose, is limited in its duration to the duration of the written limited warranties set forth herein. Some states or provinces do not allow the exclusion or limitation of incidental or consequential damages or limitation on the duration of an implied warranty, so the above limitations or exclusions may not apply to you. This warranty gives you specific legal rights and may also offer other rights, which may vary from state to state, or province to province.

All HamatUSA Accessories: 1 year warranty
COMMERCIAL LIMITED WARRANTY
HamatUSA WARRANTS ITS PRODUCTS INSTALLED IN A COMMERCIAL APPLICATION TO BE FREE OF MANUFACTURERS DEFECTS FOR A PERIOD OF 1 (ONE) YEAR. DURING THIS ONE YEAR PERIOD THE WARRANTY WILL BE TREATED AS WRITTEN IN THE RESIDENTIAL GUIDELINES ABOVE, FOR A PERIOD OF ONE YEAR.

To obtain Warranty service, Residential or Commercial, please contact:

HamatUSA

2605 Kuser Rd. Hamilton, NJ 08691

Phone: 833.33HAMAT / 833.334.2628

sales@hamatusa.com

www.hamatusa.com

TERMS & CONDITIONS / CUSTOMER SERVICE

Prices

Prices and specifications are subject to change without notice.

Invoices

Orders are processed with credit agreement on file and invoiced at the current price the day the order is received. Acknowledgment of order is faxed or e-mailed to customer prior to shipping.

Freight

All orders are F.O.B. within contiguous US 48 states, unless otherwise noted. Please see Flat Rate Shipping Schedule for shipping cost for orders less than \$1,900.00 net. All orders with an invoice value of \$1,900.00 or more shipped F.F.A.(Full Freight Allowed)

Payments

All payments are due net 30 days from invoice date with approved credit. A finance charge of 1.5% per month, or 18% per year will be added to all accounts 30 days past invoice date. Payments by credit card will be subject to a 3% processing fee.

Taxes

Federal, state, or local taxes, where applicable, will be added to invoices.

Returns

All returns must have an accompanying Returned Goods Authorization (RGA), authorized by HamatUSA. A copy of the invoice and reason for return must be supplied prior to authorization. All items must be in original packaging and in re-saleable condition. Returns should be sent within 30 days of authorization, Freight Prepaid by sender; sender assumes all responsibility for damages that may occur. 30% restocking fee applies to all authorized non-warranted returns, if returned within six (6) months. Any returns after this period shall be subject to a 50% restocking fee. Credit will be issued after receipt of merchandise in original packaging and subject to re-saleable condition. No product shall be returned after one (1) year. Replacement shipments for non-defective returns such as buyers remorse are subject to incur normal freight charges, FOB.

Claims

Any damages, missing, or shortages must be reported to the carrier for claim. Hidden shortage claims must be reported to HamatUSA within 3 days of receipt of goods. Some exceptions may apply, see your local Sales Representative.

Customer Service Contacts

Phone: 833.33HAMAT or 833.334.2628

Office Hours: Monday through Friday,
8:00am–5:00pm EST

Website: www.hamatusa.com

Email: sales@hamatusa.com

Orders

All orders received are subject to acceptance by HamatUSA according to the terms and conditions. Acknowledgments will be sent via email or fax prior to shipping.

PO/Order Submission:

Email: orders@hamatusa.com Fax: 609.584.1931

Specifications and electronic templates (DXF File) can be downloaded from our website or by contacting customer service.

Shipping

Orders for stock product normally ship within 24 to 72 business hours. Please allow additional 24 business hours for extra faucet hole drilling. Special orders for non-stocking items available in 4–12 weeks, depending on items.

Packaging

Single Box Pack—part number with a suffix of (-1) indicates a Single Box. Pallets of Boxed Units are usually 16 pieces, check your model for exact quantity. HamatUSA boxed sinks get double protection, using a protective cardboard sleeve or vinyl bag depending on the model, and a heavy duty exterior carton. Templates, instructions, and mounting clips are included.

Nested Bulk Pack—part number with a suffix of (-20) indicates standard pallet quantity of Nested Bulk Pack. HamatUSA bulk nested models are vinyl bagged or wrapped in a soft, durable liner called Kimlon®, followed by a protective cardboard outer sleeve, and finally given extra packing support with commercial grade styrofoam corner protectors. Templates, instructions, and mounting clips are included.



HAMATUSA

2605 Kuser Road, Hamilton, NJ 08691

Phone: 833-33HAMAT • 833-334-2628

Email: sales@hamatusa.com

www.hamatusa.com