

How are veterans referred to PM&RS Vocational Rehabilitation?

Consults are received from the Polytrauma team & other providers. Electronic consults to PM&RS Vocational Rehabilitation are placed on RACO. Your consult will be reviewed and the veteran will be contacted for interview.

Does the veteran have to work 40 hours a week or attend school full-time?

Work as well as school is not necessarily a 40 hour week. The Case Manager will assist in determining the number of hours that are right for the veteran.

What if the veteran has anxiety about returning to work and/or beginning training?

It is normal to have some anxiety about starting a job or school—but the Case Manager will work at the veteran's pace to help with successful community transition.

What if the veteran "fails" or decides to quit a job or school?

Quitting a job or school is not a failure. We build upon experience. The Case Manager will help develop a plan of action for the veteran's success and to help him/her achieve optimum vocational adjustment.



Vocational Rehabilitation Polytrauma Services

Information for Providers



VA
HEALTH
CARE

Defining
EXCELLENCE
in the 21st Century

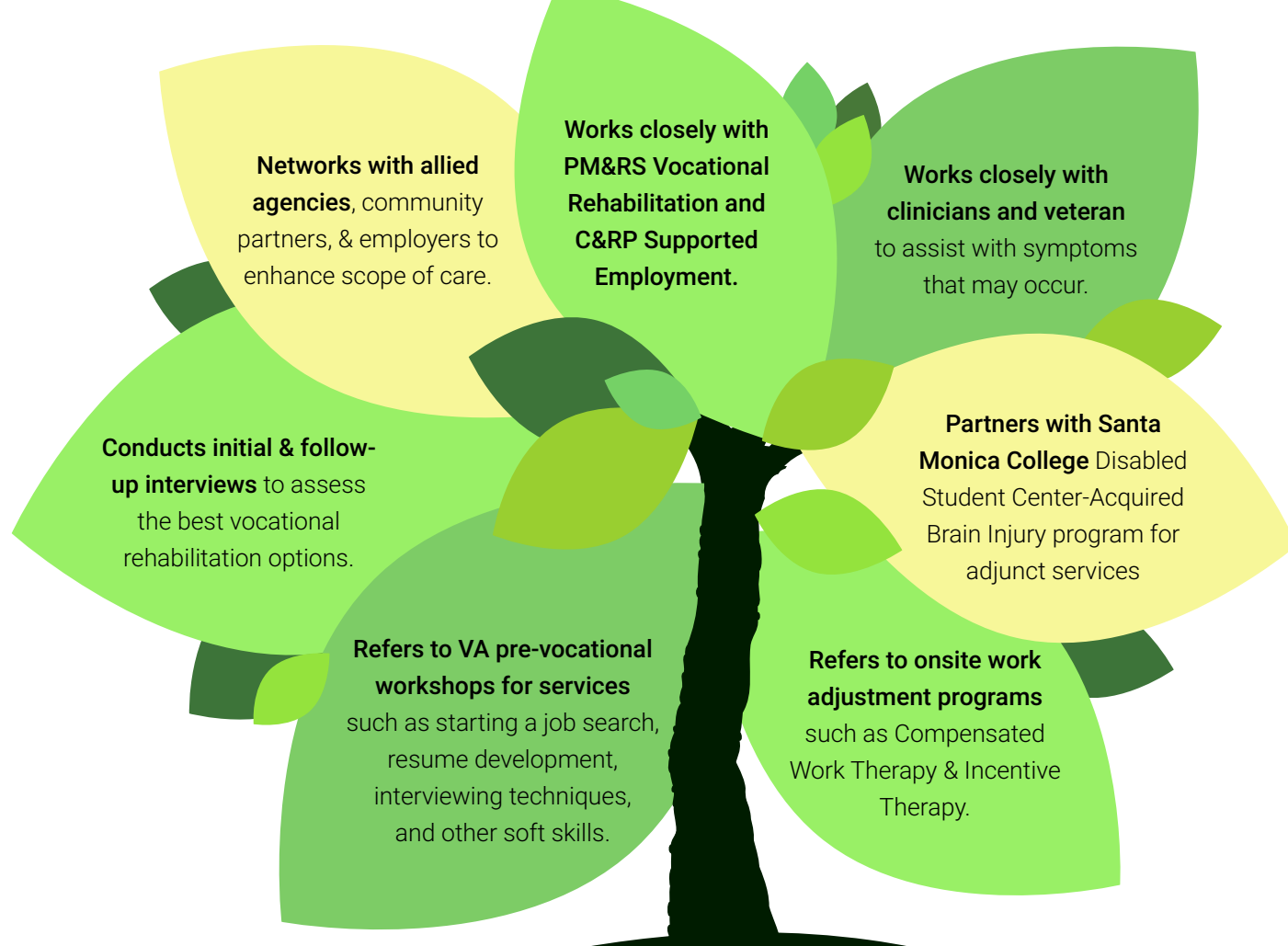


What is PMRS Vocational Rehabilitation Polytrauma?

As an integral component of the interdisciplinary PM&RS Polytrauma Team-Level II, Vocational Rehabilitation is the key to successful community transition.

Already accredited by CARF-The Rehabilitation Commission, for its organizational employment services, PM&RS Vocational Rehabilitation strives to provide comprehensive services.

Our mission is to help veterans optimize his/her vocational potential, achieve individualized goals, and strive for economic self-sufficiency.



What can PMRS Polytrauma do for you?

Sepulveda Ambulatory Care Center
16111 Plummer Street
Mail Code 117C Bldg. 45
Phone: (818) 891-7711 x9940
Fax (818) 895-9479

Greater LA VA Healthcare Center
11301 Wilshire Blvd. Mail Code 117
Los Angeles, CA 90073
(310) 478-3711 x44597