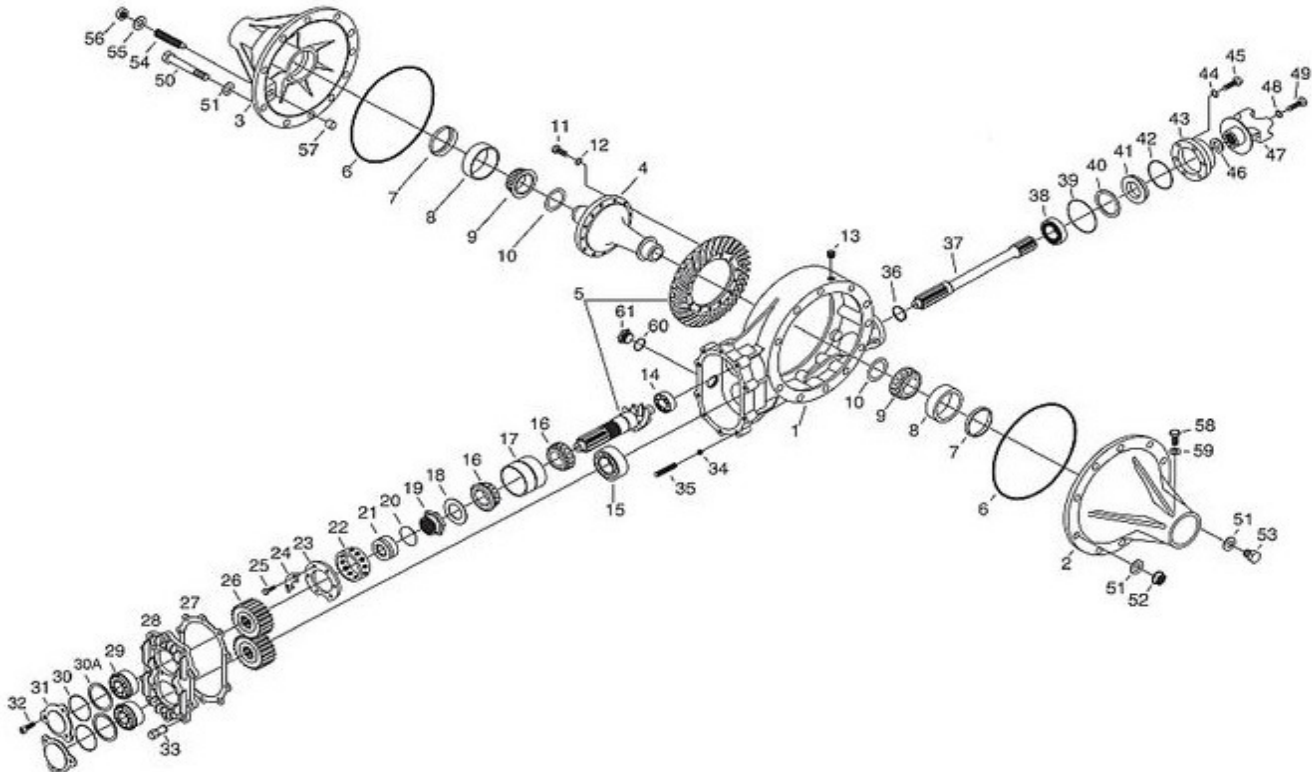


# Winters 'Sprint Center' Quick-Change Read End Internal Parts Breakdown



All Winters Quick-Change Service Parts  
Available At Racecar Engineering

800-882-7231— [sales@racecareng.com](mailto:sales@racecareng.com)



## CLOSED TUBE REAR AXLE ASSEMBLIES "SPRINT CENTER" QUICK CHANGE COMPONENTS

Only stocking parts are listed; other parts are available on a special order basis.

No.	Description	Part No.	Qty.
1	Sprint Center Section	WINK5840	1
2	Aluminum 6-Rib Right Side Bell	WIN1663-01B	1
3	Aluminum 6-Rib Left Side Bell	WIN1663-02	1
4	31-Spline Aluminum Spool	WIN5034-11A	1
5	Ring and Pinion, Std. 4.86 Ratio	WIN5400	1
6	O-Ring, 4 and 6-Rib Bell	WIN7403T	2
7	Axle Tube Oil Seal	ALL72140	1
8	Bearing Cup, Side Bell	WIN7310	2
9	Bearing Cone, Steel Spools/Differentials	WIN7309	2
9	Bearing Cone, Alum. Spools/Differentials	WIN7340	2
10	Shim Kit, Steel Spools/Differentials	WIN5097	1
10	Shim Kit, Alum. Spools/Differentials	WIN5295	1
11	Ring Gear Bolt, Threaded Ring Gear	WIN7852	12
12	3/8" Belleville Washers, Threaded Ring Gear	WIN7815-12	12
13	3/8" Recessed Socket Head Pipe Plug	WIN7111B	2
14	Roller Bearing, Pinion Nose	WIN7331	1
15	Shielded Ball Bearing, Lower Shaft	WIN7339	1
16	Bearing Cone, Pinion Shaft	WIN7308	2
17	Double Bearing Cup, Pinion Shaft	WIN7307	1
18	Bearing Washer	WIN5055	1
19	Posi-Lock Nut, Pinion Shaft	WIN6485R	1
20	O-Ring, Posi-Lock	WIN7445	1
21	Posi-Lock Retainer, Pinion Shaft	WIN6484	1
22	Retaining Ring, Pinion	WIN5020	1
23	Retaining Plate, Pinion	WIN296A	1
24	Lock Tab	WIN2374	3
26	Quick Change Gear Set (Not Included)	Specify Ratio	1
27	Gasket, Gear Cover	WIN6729	1
29	Ball Bearing, Gear Cover	WIN7521	2
31	Bearing Cap	WIN1667	2

No.	Description	Part No.	Qty.
33	3/8"-16 Aluminum (Red) High Nut, Gear Cover	WIN7794AR	10
34	5/16" Dia. Ball, Gear Cover	WIN7398	10
35	3/8"-16 x 1-3/4" Stud, Gear Cover	WIN7802	10
36	Snap Ring, Lower Shaft	WIN7610	1
37	Standard Lower Shaft	WIN5003-02	1
38	Front Ball Bearing, Lower Shaft	WIN7390	1
39	O-Ring, Seal Plate	WIN7413	1
40	Snap Ring, Seal Plate (.375" Seal)	WIN7653	1
41	Seal, Seal Plate (Thin .375" Seal)	WIN7204	1
41	Seal, Seal Plate (Thick .750" Seal)	WIN7204T	1
41	Seal, Seal Plate (Thick .750" Viton Seal)	WIN7204V	1
43	Seal Plate, .750" Seal	WIN5018	1
46	Spacer, Drive Yoke	WIN6532	1
47	Drive Yoke, Steel	WIN5038	1
47	Drive Yoke, Steel Threaded	WIN5038B	1
47	Drive Yoke, Billet Aluminum	WIN5038AS	1
47	Drive Yoke, Steel With Integral Spacer	WIN3533	1
48	Retaining Washer, Drive Yoke	WIN5037	1
49	3/8"-24 x 1" HHCS, Drive Yoke	WIN7109	1
50	7/16"-20 x 5-1/2" ThruBolt	WIN7176	10
52	7/16"-20 Flanged Locknut, ThruBolt	WIN7177	10
54	1/2"-13 Adjusting Screw, 8-Rib Bell	WIN7155	1
54	1/2"-13 Adjusting Screw, 4 and 6-Rib Bell	WIN6149	1
56	1/2"-13 Jam Nut, Adjusting Screw	WIN7137	1
57	Thrustblock, Adjusting Screw	WIN5010	1
58	3/8"-24 x 1" HHCS, 4-Rib Side Bell	WIN7109	16
59	3/8" SAE Flat Washer	N/A	16
60	O-Ring, Plug	WIN7454	1
61	Inspection Plug	WIN6857	1

Order Online On Our Website: [WWW.RACECARENG.COM](http://WWW.RACECARENG.COM)