

TRAIL NAME: LITTLE CHERRY CREEK (ABOUT 4-1/4 MILES TO CDT)

Relevant USGS map: Twin Sisters, 1999

Trail Rating: 4 = rocky areas, narrow spots, bridges, switchbacks, more elevation changes, physically challenging for horse

Directions:

1. Drive north on NM Hwy 15 (Piños Altos Rd) through the town of Piños Altos. At the north end of town, just beyond Cross Mountain Rd (on right), Hwy 15 intersects with Main St (Y intersection on left). Set your trip meter here.
2. Continue on Hwy 15 for about 2 miles and observe a wide spot in the road on your left. That's the parking area for the Little Cherry Creek trail, but you can't get there from here. Instead, drive about 0.63 miles farther until you get to the switchback and parking area for the Ben Lily Memorial. Turn your rig around in the parking area (on the right) and head back down Hwy 15 to the wide spot in the road.



The parking area has room for 2 or 3 rigs, but you must park as far forward and to the right as possible so that everybody has room to park.

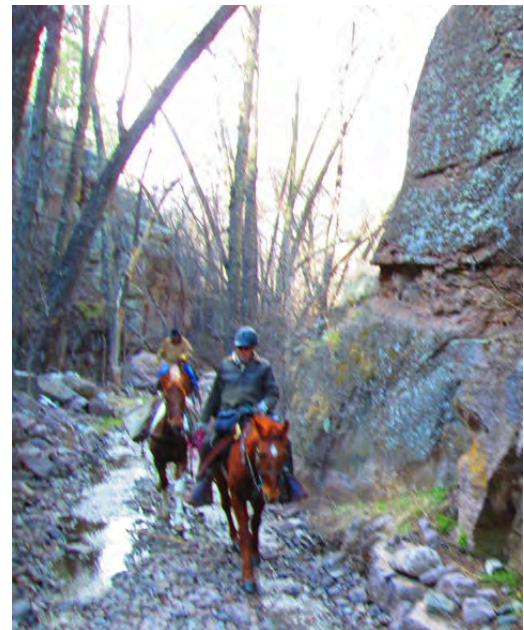
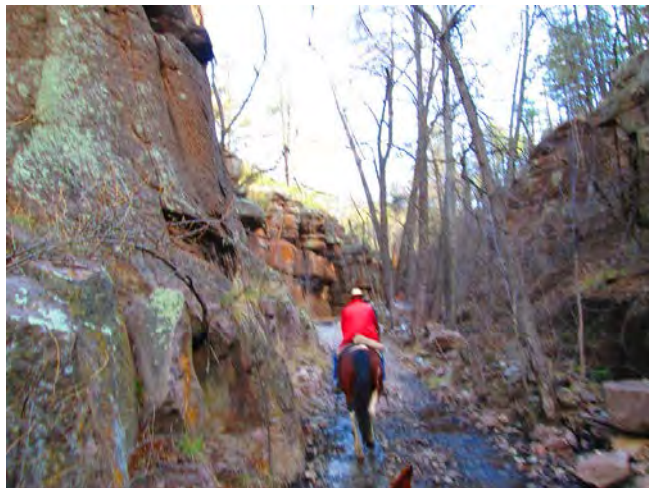
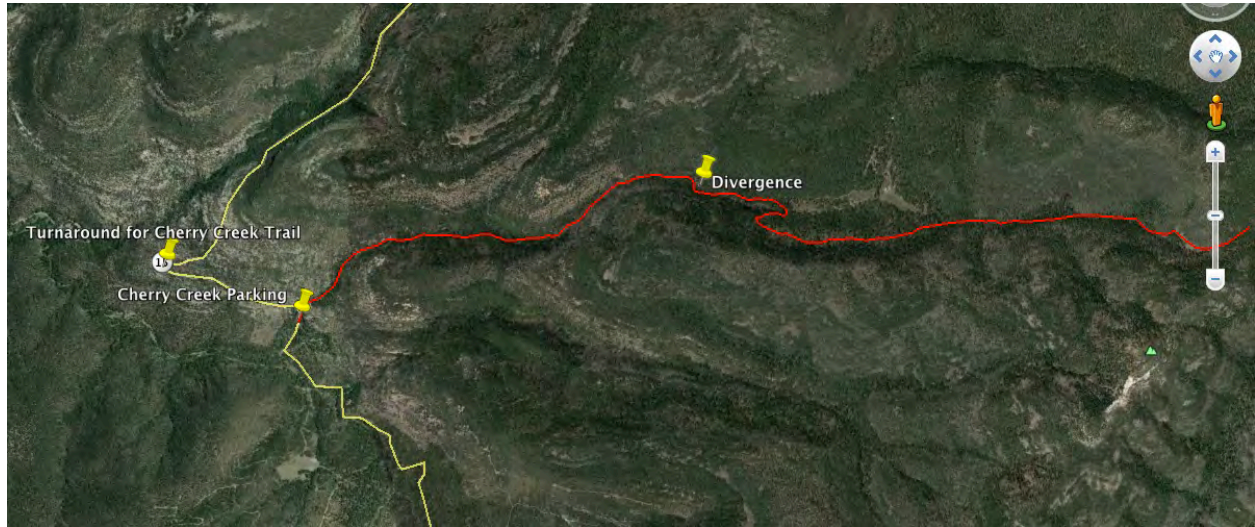
Trail Information:

The Little Cherry Creek trail is an easy ride, suitable for supervised novice riders. Abundant cover and moist drainages make it an enjoyable trek on a hot day. The trail has a few steep climbs, but they are mostly free of rocks. If your horse is accustomed to going barefoot, he can handle the trail without boots.

1. From the parking area, ride about 260' feet up Hwy 15 to Little Cherry Creek Rd (on the right).

TRAIL NAME: **LITTLE CHERRY CREEK (ABOUT 4-1/4 MILES TO CDT)**

2. The trail starts as a two-track that passes through shady terrain along Little Cherry Creek, which flows through a rocky gorge, speckled with hardwoods.
3. The two-track diverges from the road about 1.75 miles up the way. The trail bends sharply to the right here and is easy to miss. Watch for logs across the wrong path, or an arrow on a tree, or maybe even a cairn to direct you.
4. From the divergence, the trail continues about 2.4 miles to its intersection with the Continental Divide trail on the northern face of the Twin Sisters. It has a couple of steep switchbacks and can be slippery following set weather. It's an easy trail to follow, but you need to pay attention.



More →

TRAIL NAME: LITTLE CHERRY CREEK (ABOUT 4-1/4 MILES TO CDT)

