

PEERLESS CONCRETE PRODUCTS CO.
SINCE 1959

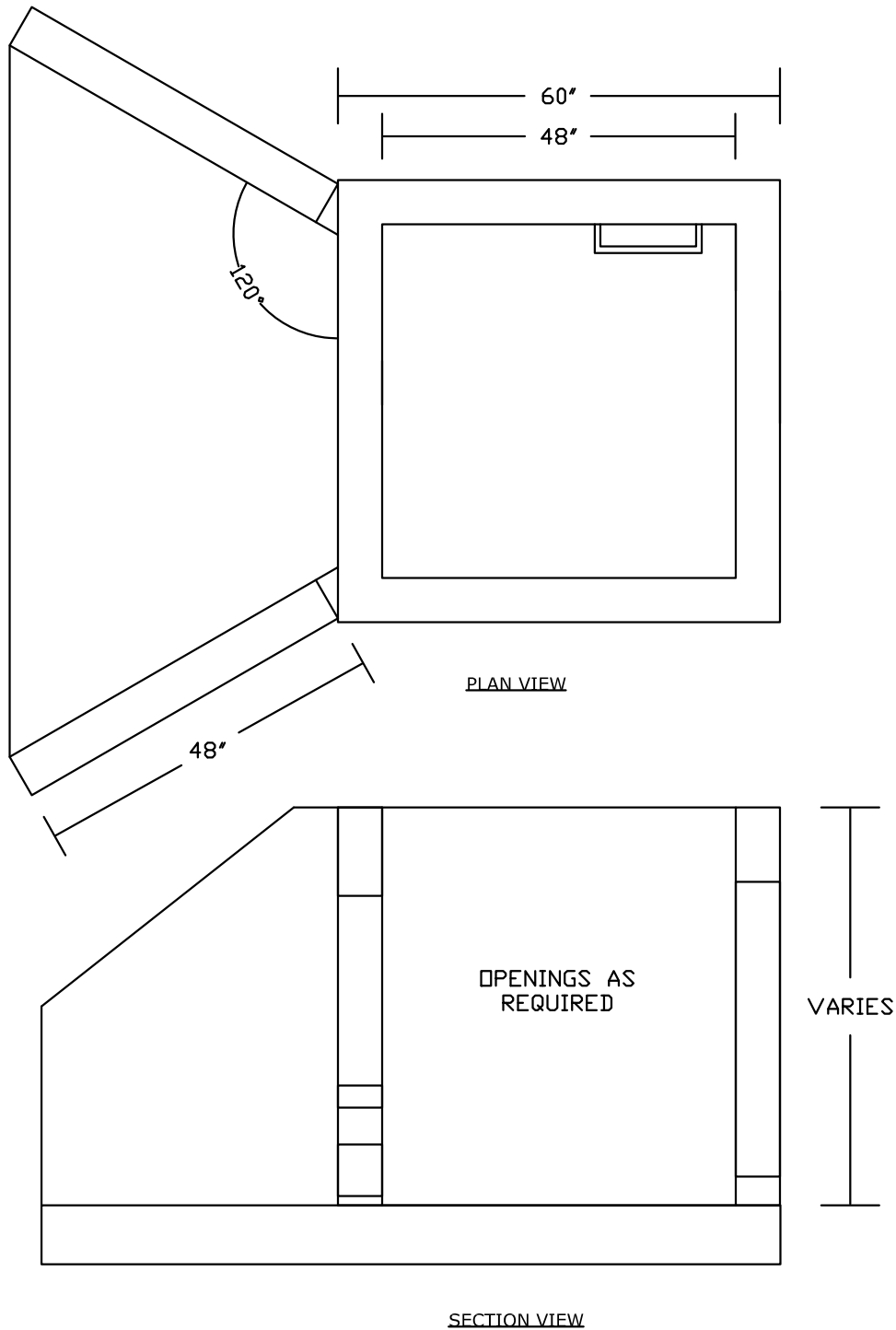
INDEX

ITEM	PAGE
Section H- <i>Miscellaneous (Index)</i>	H-1
Flared Outlet Structure Sample Drawing	H-2
Straight Winged Outlet Structure Sample Drawing	H-3
Outlet Control Structure with Weir Wall Sample Drawing	H-4
Water Meter Pit Sample Drawing	H-5

H-1

PEERLESS CONCRETE PRODUCTS CO.

—SINCE 1959—



FLARED OUTLET STRUCTURE SAMPLE DRAWING
(AS BUILT BY PEERLESS)

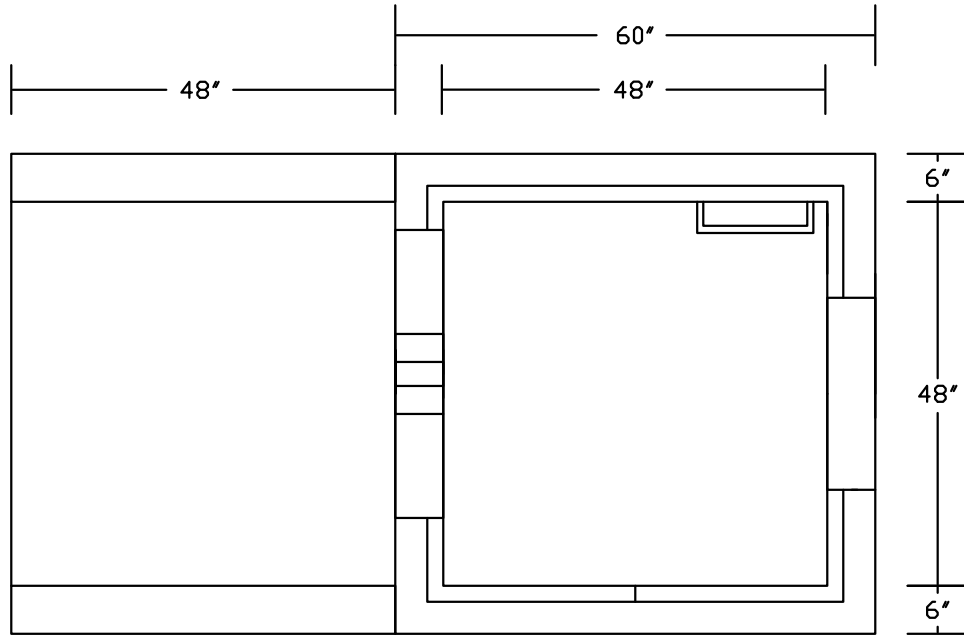
NOTES:

- LOAD RATING: HS 20
- CONCRETE 4,500PSI @ 28 DAYS
- REINFORCING: AS PER ASTM A-615
GRADE 60 REBAR
- STEPS : STEEL REINFORCED
POLYPROPYLENE COATED, DOT APPROVED
- SCALE: NTS

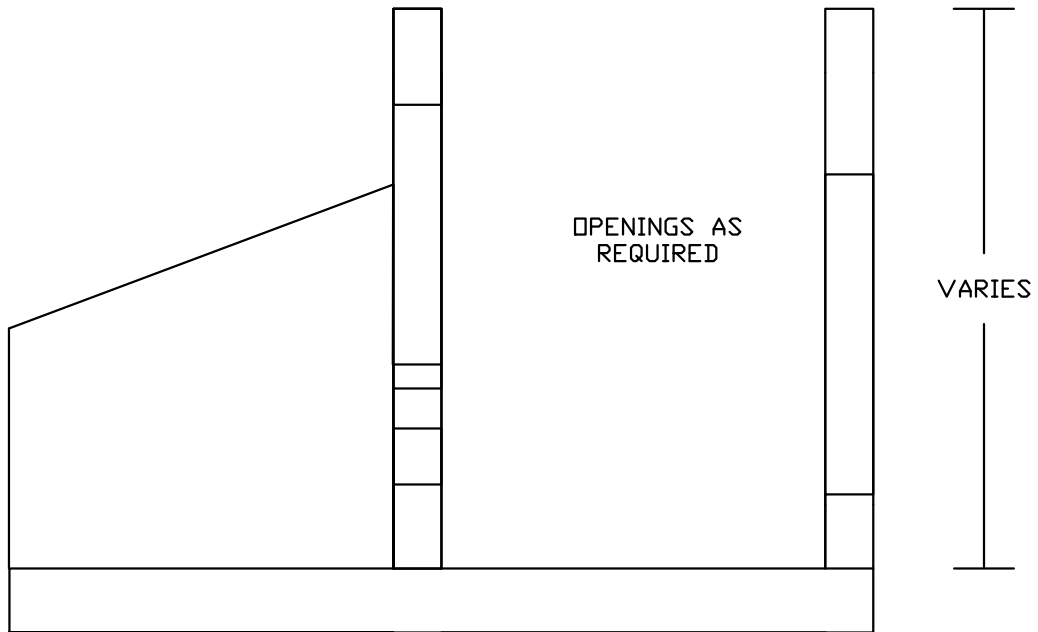
H-2

PEERLESS CONCRETE PRODUCTS CO.

—SINCE 1959—



PLAN VIEW



SECTION VIEW

STRAIGHT WINGED OUTLET STRUCTURE SAMPLE DRAWING (AS BUILT BY PEERLESS)

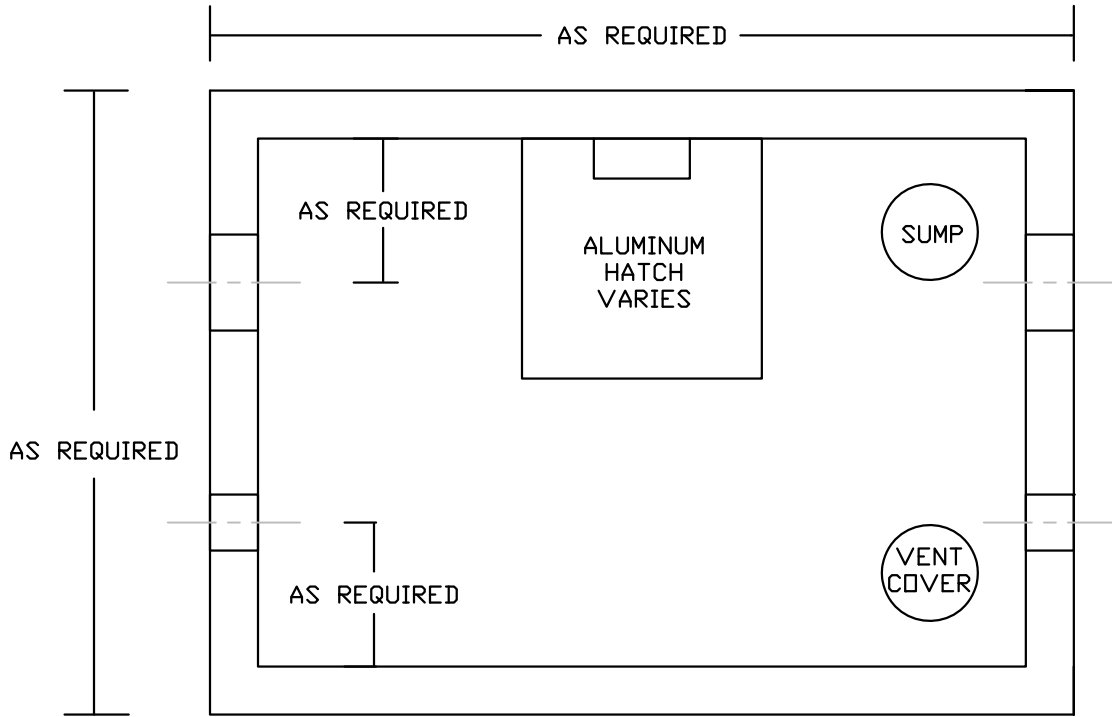
NOTES:

- CONCRETE 4,500PSI @ 28 DAYS
- REINFORCING: AS PER ASTM A-615
GRADE 60 REBAR
- SCALE: NTS
- CHAMFER ALL EXPOSED EDGES
- STEPS : STEEL REINFORCED
POLYPROPYLENE COATED, DOT APPROVED

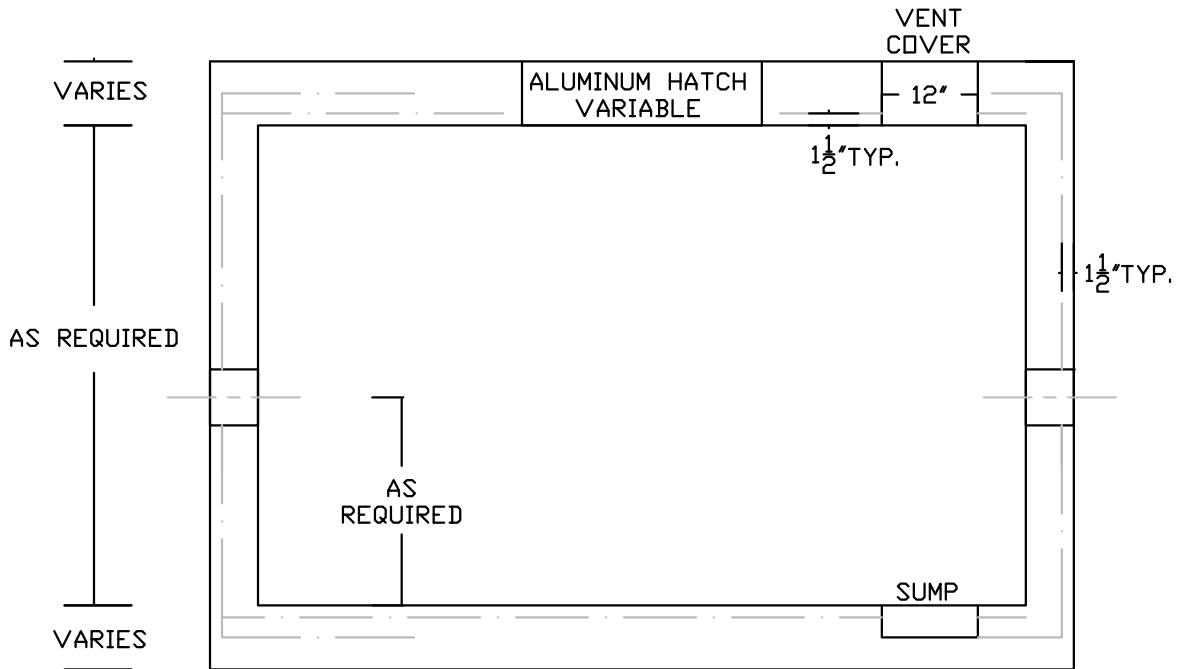
H-3

PEERLESS CONCRETE PRODUCTS CO.

—SINCE 1959—



PLAN VIEW



SECTION VIEW

WATER METER PIT SAMPLE DRAWING
(AS BUILT BY PEERLESS)

NOTES:

- CONCRETE: 4,500 PSI @ 28 DAYS
- REINFORCING: AS SPECIFIED, GRADE 60 REBAR
- SCALE: NTS
- EXTERIOR COATED 2 COATS OF APPROPRIATE SEALER
- STEPS : STEEL REINFORCED POLYPROPYLENE COATED, DOT APPROVED

H-5