



# **Health & Safety, Traffic Management And Installation Method**

Contact:  
Kaushal Shah  
07544222303  
kaushal.shah@promptmedia.co.uk

## Health & Safety

Prompt Media installation teams are trained to the highest standards and are fully certified and insured. All our equipment meets highways standards and is inspected at regular monthly intervals. All staff and installers wear Personal Protection Equipment (PPE) on site as standard.

Prompt Media teams carry out a full risk assessment before commencing work on every site and gets it approved by a supervisor or duty manager before commencing with traffic management.

All installers go through regular training and retraining on all courses related with their work. They are trained to higher grades than required, hence, Chapter 8 training is given to supervisor level as standard.

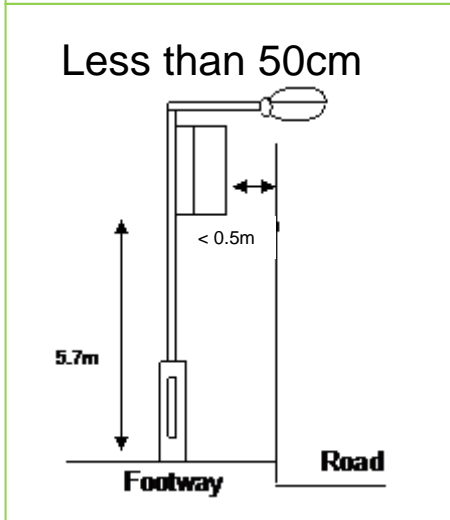
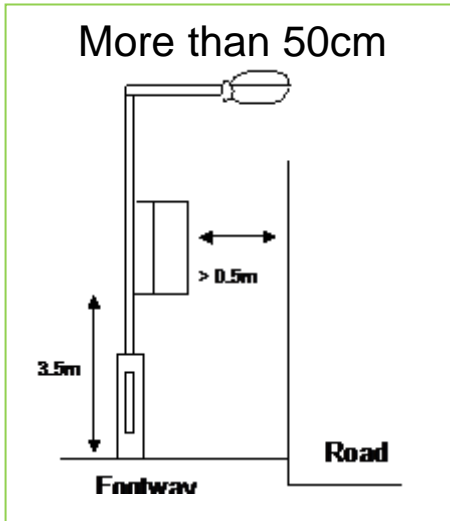
Prompt Media also conducts spot checks announced to make sure the teams are working safely and to ensure traffic is running smoothly.

Teams are trained:

- ✓ City and Guild - Chapter 8: Signing, Guarding and Lighting – Operator & Supervisor
- ✓ IPAF certified to operate access equipment and use harnesses
- ✓ Working at heights and proper use of ladder

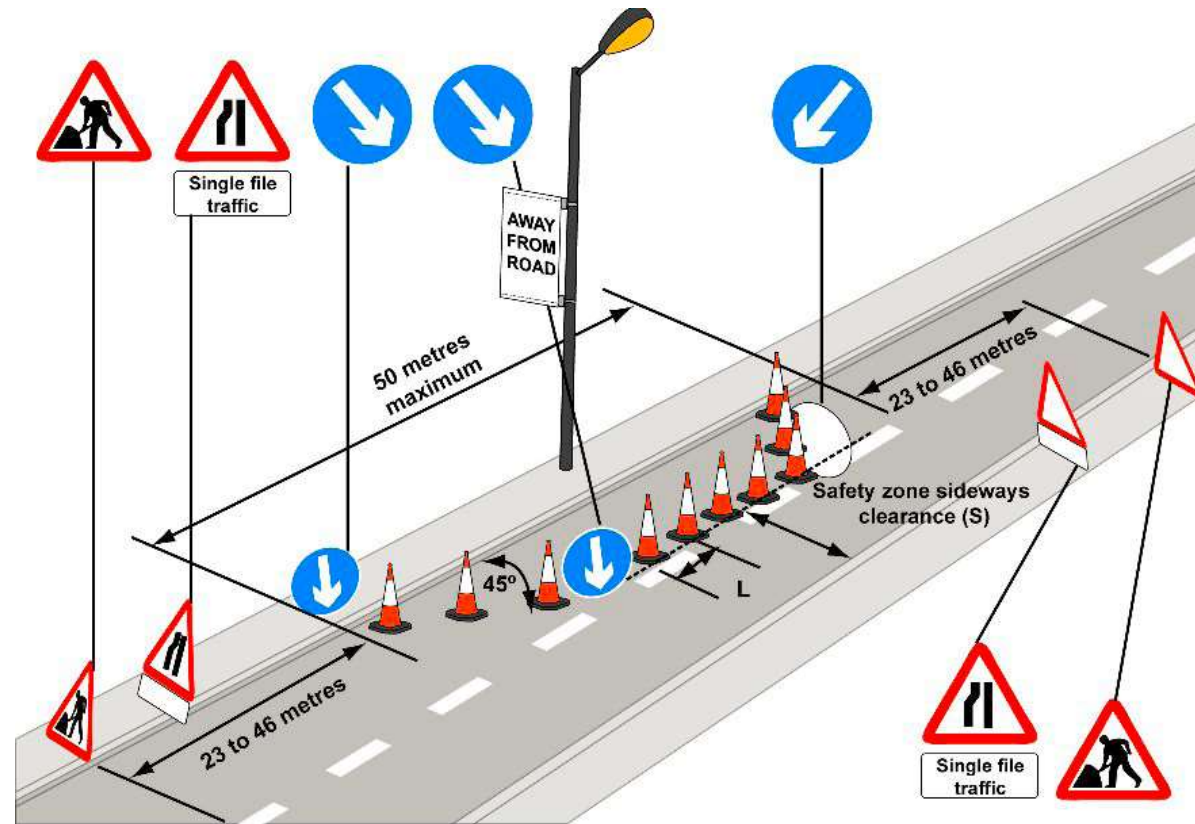
## Banner Install Guide

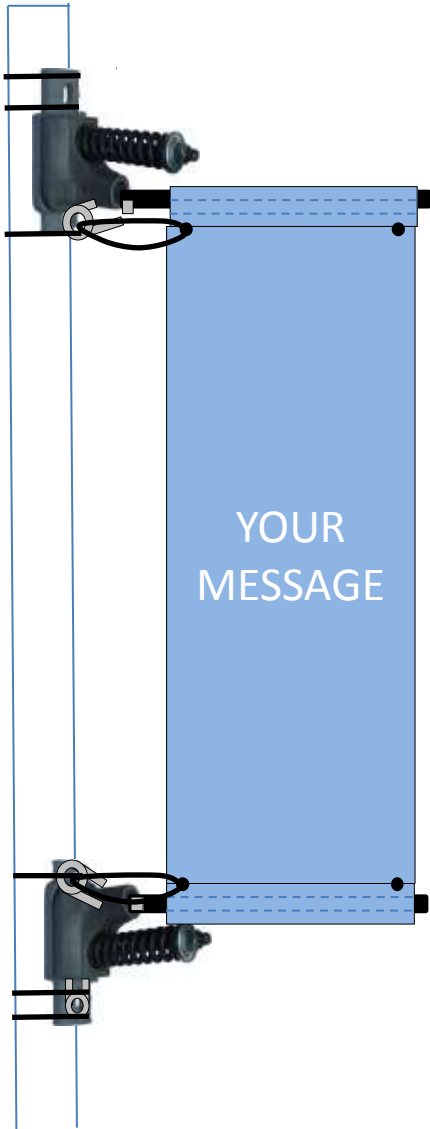
(Based on distance from curb)



# Standard Traffic Management

(There will be a more site specific plan submitted once we have confirmation on winning the tender.)





## Method for affixing banners

- The bottom arm of the lamppost banner must be at least 2.3m from the ground.
- The banner arms must be installed so that they are 45cms from the edge of the curb.
- The banner arms must be installed so that they can move freely
- The banner arms are affixed onto the lamppost using Tamtorque banding.
- To protect the paint and to avoid damaging the lamppost a PVC shield inserted under the brackets.
- The banding tape wraps around 3 points on the each banner arm casting
- The banner pole is inserted into loop on top and bottom of the banner
- The banner poles are then inserted into the banner arm casting
- A safety pin is inserted through the bracket and arm to secure the banner pole.
- A cable tie is used to fastened through the banner to the bracket through the eyelet on the top and bottom.
- The banner installation is complete

Contact us

# PROMPT MEDIA

The logo graphic consists of three overlapping rectangular shapes. The top shape is a dark teal color, the middle one is white, and the bottom one is a slightly lighter teal color. They are arranged in a staggered, overlapping fashion, creating a sense of depth and movement.

*.....we listen, design & act”*

Kaushal Shah

t: +44 (0)20 31 37 77 37

m: +44 (0)75 44 222 303

e: [kaushal.shah@promptmedia.co.uk](mailto:kaushal.shah@promptmedia.co.uk)

w: [www.promptmedia.co.uk](http://www.promptmedia.co.uk)