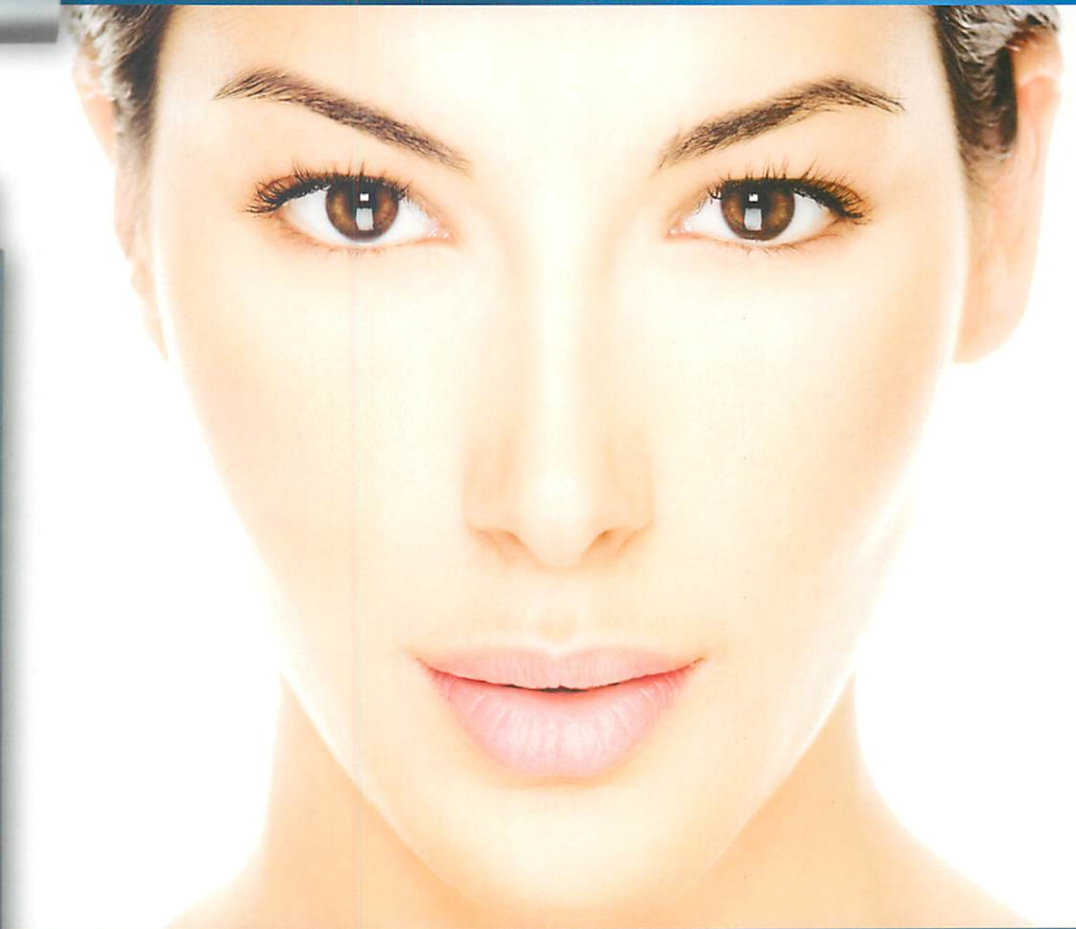


# EQUINOX™

Bringing Healthy Skin To Light



An Intelligent  
Fractional CO2 Laser



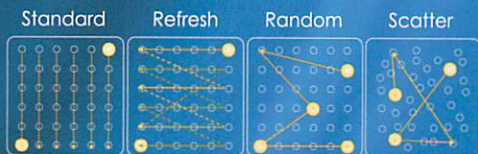
**ECLIPSE**  
AESTHETICS

# EQUINOX™

## Bringing Healthy Skin To Light

EQUINOX™ embodies the wisdom of over 20 years of scientific research and development. The laser's ability to aid the physician in the treatment of fine lines and wrinkles, acne scars, surgical scars, and benign pigmented lesions are most impressive! Within a single-platform interface, both fractional and surgical modes offer infinite customizable treatment options. Take advantage of the tremendous opportunity to quickly advance your practice with EQUINOX™ today!

Quantity	Units
Laser Type	Fractionated CO2
Wavelength	10,600nm
Power Output (continuous)	1~30W, 75W
Power Supply	100 ~ 240V, 50/60Hz, 800W
Pulse Energy	1 ~ 300mJ
Spot Size	120um, 350um, 800um
Spot Density	1-20% - 120um, 1-40% & 100% - 350um, 1-28% - 800um
Scan Area Size	From 1 X 1mm To 15 X 15mm
Scan Area Shapes	Square • Triangle • Circle (multiple sizes)
Operation Mode	Stamp, Moving ('Auto ON')
Length of Pulse	0.05 ~ 10ms
Display	Color LCD touch screen
Weight	35kg (77lb)
Beam Divergence	< 7mrad
Beam Patterns	



### Optional Incisional Hand Pieces:

- 50mm focal distance, spot size 120um
- 100mm focal distance, spot size 120um



Eclipse Aesthetics, LLC.  
16850 Dallas Parkway  
Dallas, Texas 75248  
(local) 972-380-2911  
(toll-free) 800-759-6876  
(fax) 972-380-2953  
sales@eclipsemed.com  
eclipseaesthetics.com

