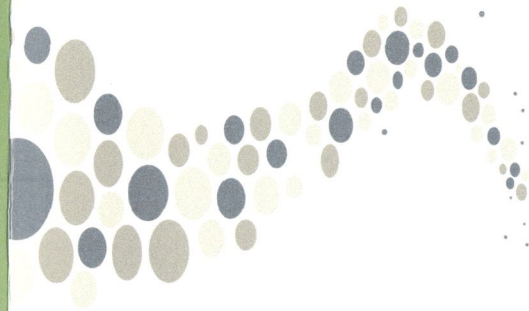


What is social capital?

An individual with a disability will face many challenges in the world; not just those related to a specific disability. Based on the 2010 Census Report, they are more likely than the average person to be unemployed or underemployed, to experience persistent poverty and less likely to own a home of their own. AI addresses these and other issues surrounding the topic of inclusion and how it is impacted by social capital.

Why does it matter?

The quality and quantity of your relationships - your social capital - is important. The more social capital you have, the healthier you are, the more you achieve, the longer you live, and the better the outcomes are in your life.



Autism Alliance of Northeastern NY
P.O. Box 1884
Plattsburgh, NY 12901

Non-Profit
US Postage
Paid
Plattsburgh NY
Permit # 103

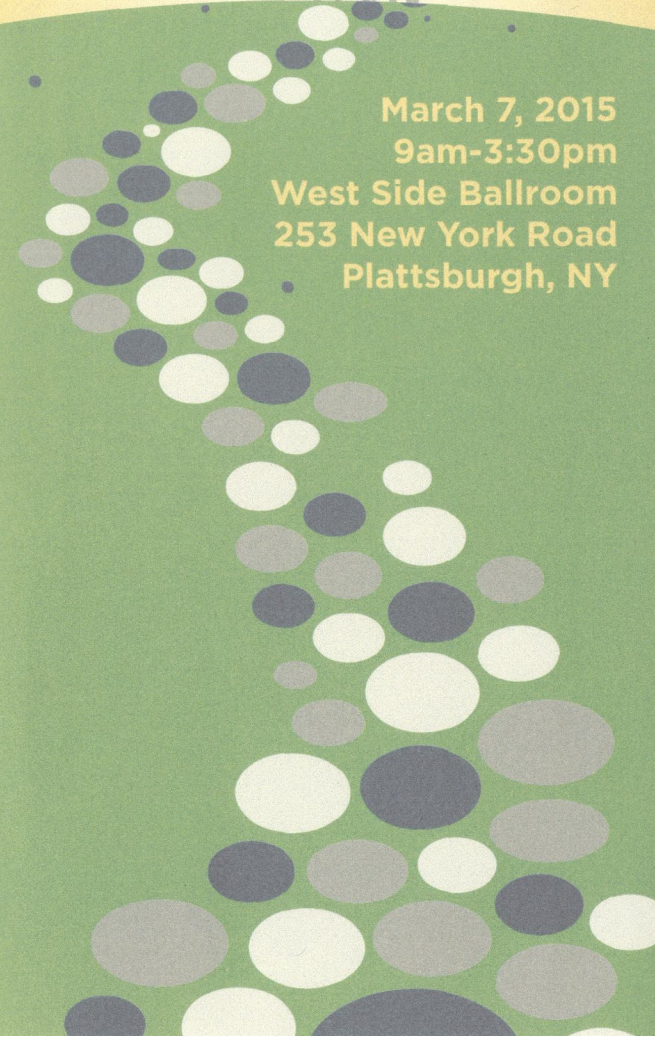
AUTISM ALLIANCE OF NORTHEASTERN NY
P R E S E N T S

JOURNEY TO INCLUSION

Discovering Social Capital



March 7, 2015
9am-3:30pm
West Side Ballroom
253 New York Road
Plattsburgh, NY



Meet the Speaker

Al Condeluci teaches at the University of Pittsburgh, writes, speaks and consults on issues related to culture, community, and social capital.

Al is CEO of Community Living and Support Services (CLASS), a community based support system for folks with disabilities in Pittsburgh, PA. He holds an MSW and a PhD from the University of Pittsburgh, where he is on the faculty in the School of Health and Rehabilitation Sciences and the School of Social Work.



This presentation is designed to reach Self Advocates, Parents, Professionals and everyone that would like to learn the importance of inclusion for all individuals, especially those with a disability, and ways to improve inclusion in the community for everyone. The presentation will answer:

- What is Community?
- What is Social Capital?
- Why is Social Capital important?
- How do we build Social Capital?

"Al inspires everyone to want to get involved. He stresses collaboration without making you feel like you're being bullied into caring. His passion is infectious!" - Amy

"Al is a dynamic speaker who breaks down the meaning and importance of inclusion; empowering people to make it happen."

- Kelly

Registration

Name _____

Address _____

Phone _____

Email _____

☐ Self Advocate ☐ Parent ☐ Professional

Meal Choice:

☐ Roast Beef ☐ Chicken ☐ Vegetable

Dietary restrictions/allergies and/or special accommodations: _____

Price: **\$15 (includes lunch)**

Register online:

Visit aaneny.org to pay with credit/debit card.

Register by mail:

Check Payable to:

Autism Alliance of Northeastern NY

Mail Check to:

Autism Alliance of Northeastern NY

PO Box 1884

Plattsburgh, NY 12901

Other: _____

A limited number of scholarships are available. Please email admin@aaneny.org to request.

For questions, please contact admin@aaneny.org or call (518)565-0207.

Schedule

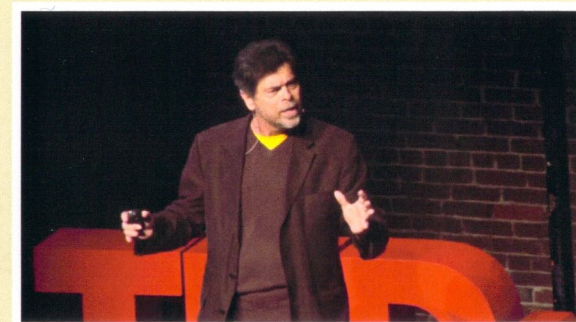
8:30am: **Registration**

9:00am-11:45am: **Morning Session**

11:45am: **Lunch**

1:00pm-3:30pm: **Afternoon Session**

A morning and afternoon break will be offered, but participants are encouraged to take breaks when needed and participate to the best of their ability.



Resource Fair

Local agencies will be present to provide information on resources and services in the greater Plattsburgh area. Representatives from each agency will be at their resource table from 8:30 to 9:00 am and from 12 to 1 pm. The Resource Fair will be available to public **free of charge**.

Menu

- Roast Beef Wrap with Cheddar Horseradish
- California Chicken Wrap
- Grilled Vegetable Wrap

Served with potato salad, chips, tea, coffee, soda and cookies.