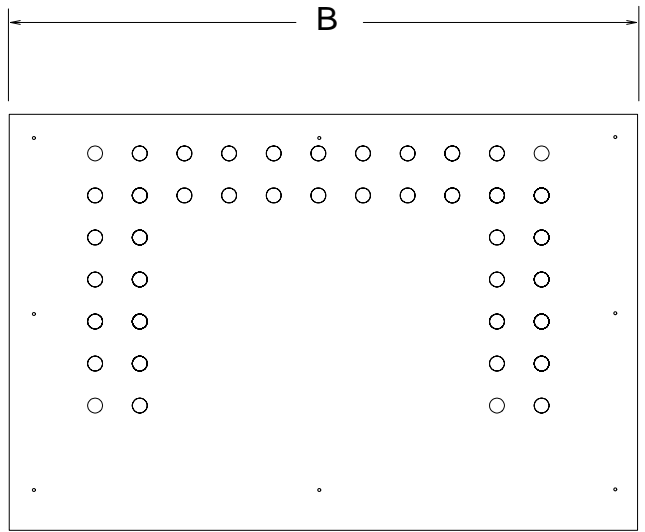
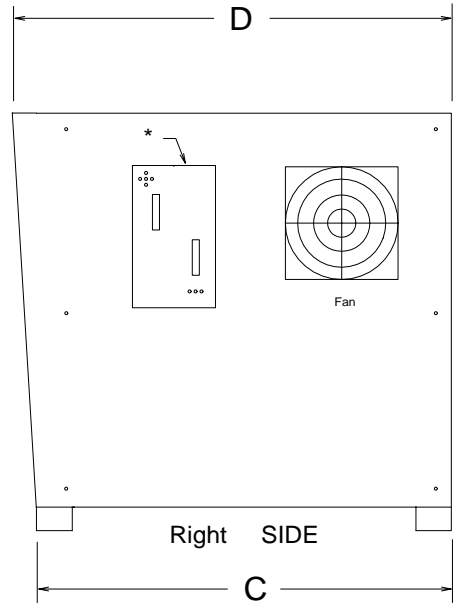


REVISIONS			
SYM.	DESCRIPTION	DATE	APPR.

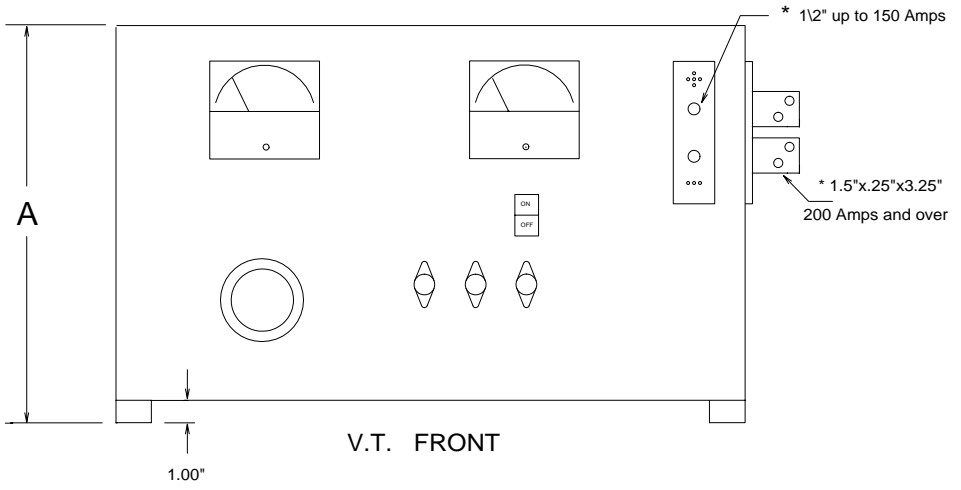


TOP

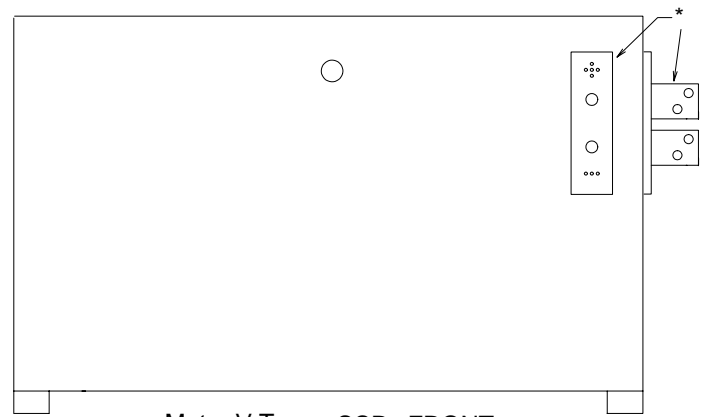
POLY	A	B	C	D
#3	15.75"	26.50"	17.50"	18.50"
#3S	16.75"	26.50"	17.50"	18.50"



Right SIDE



V.T. FRONT



Motor V.T. + SCR FRONT

ULTIMATIC			
RECTIFIER POWER SUPPLY BY: ALDONEX			
SCALE	NONE	APPROVED BY:	DRAWN BY J.M.
DATE	9-15-97		
3 + 3S POLY CABINET			
BELLWOOD, ILL.	U.S.A.	DRAWING #	5134