

PONTOON WATER GLIDE

INSTALLATION INSTRUCTIONS

888.311.8313



INDEX PAGE

	Page
Tools you will need for installation.....	3
Bill of materials (what's in your kit)	4 & 5
Having all Measurements and Information (STEP-1).....	6
Preparing your Water Glide for Installation (STEP-2)	7
Laying out mounting rails to your Installation (STEP-3)	8
Drilling and Bolting your Mounting Rails to your Water Glide (STEP-4)	9 & 10
Mounting your Water Glide to your Pontoon Boat (STEP-5).....	11
Checking your Installation and Conclusion.....	13

MINIMUM TOOLS

Note pad and pencil
Measuring tape (16 ft min)
Marker (Sharpie)
Level
Drill motor
3/8" drill bit
1/8" drill bit
9/16" socket with ratchet
9/16" box end wrench or similar tool
3/8" socket with ratchet
Circular saw or jig saw with carbide blade
Chalk line
C-Clamps and/or Vise Grip Clamps and/or Bar Clamps
WD-40 Spray

HELPFUL ADDITIONAL TOOLS AND SUPPLIES

4 ft. or longer straight edge
Framing Square
Center punch
Cordless drill or drills
Hex drive socket 3/8" to fit cordless drill
Shop light / lights
Car Floor Jack
Blocking material
Padding material (old carpet, old blankets, old towels)
Cargo strap with ratchet (2)

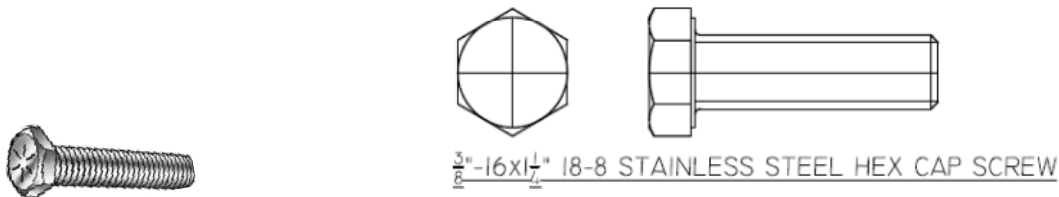
BILL OF MATERIALS

<u>Description</u>	<u>Quantity</u>
1) Pontoon Water Glide Hull	1
2) Mounting Rails	2
3) 3/8" - 16 x 1 1/4" Stainless Steel Hex Bolts	16
4) 3/8" – 16 Stainless Steel Nylon Locking Hex Nuts	16
5) 3/8" Stainless Steel SAE Washers	32
6) 3/8" Stainless Steel Fender Washers	16
7) 1/4" – 14 x 1 1/4" Stainless Steel Self Tapping screws	28
8) 1/4" Stainless Steel External Star Lock Washers	28

Item 1 with Item 2 installed (Water Glide with Mounting Rails Installed)



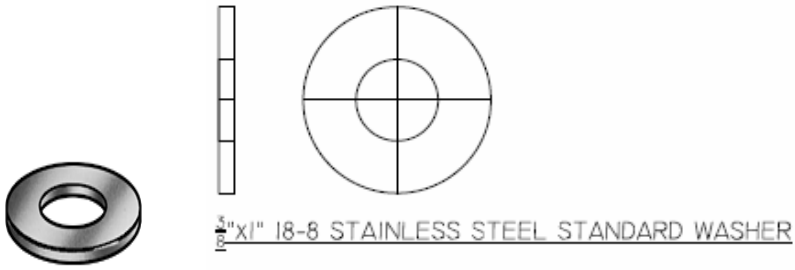
Item 3 (3/8" - 16 x 1 1/4" Stainless Steel Hex Bolts)



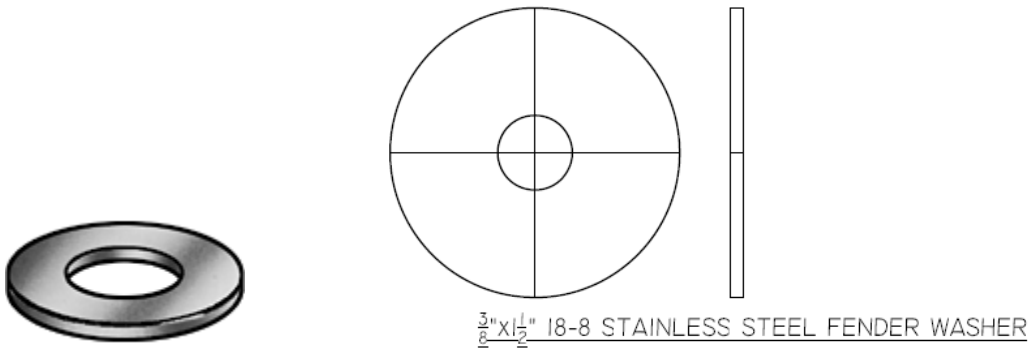
Item 4 (3/8" – 16 Stainless Steel Nylon Locking Hex Nuts)



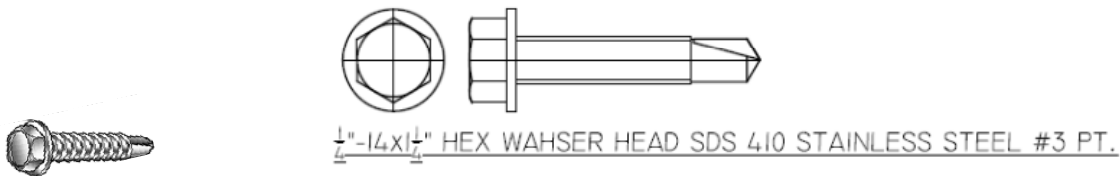
Item 5 (3/8" Stainless Steel SAE Washers-3/4" outside Dia.)



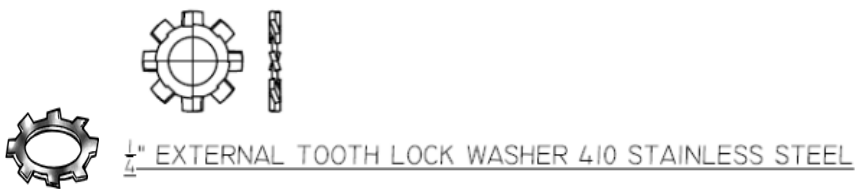
Item 6 (3/8" Stainless Steel Fender Washers-1 1/2" outside Dia.)



Item 7 (1/4" - 14 x 1 1/4" Stainless Steel Self Tapping screws)



Item 8 (1/4" Stainless Steel External Star Lock Washers)



STEP – 1

REVEIWING THE LAYOUT INFORMATION

Having ALL measurements and information regarding the installation of Your Pontoon Water Glide with you.

This would include the measurements and information about your Pontoon Boat you have supplied to Pontoon Water Glide from the Order Form.

The Confirmation Order Form information from Pontoon Water Glide with optimal mounting location and other pertinent information.

“R” dimension will be the dimension from the Ridge at the rear of the Pontoon Water Glide to the top of your Mounting rail or cut off line. See fig 2a

If the “R” dimension provided is greater than 16 ½ inches, skip step 2 and proceed to step 3. If the “R” dimension is less than or equal to 16 ½ inches proceed to step 2.

The “D” dimension will be the distance from the rear of the pontoon to the rear of the Pontoon Water Glide. See fig 3a

STEP - 2

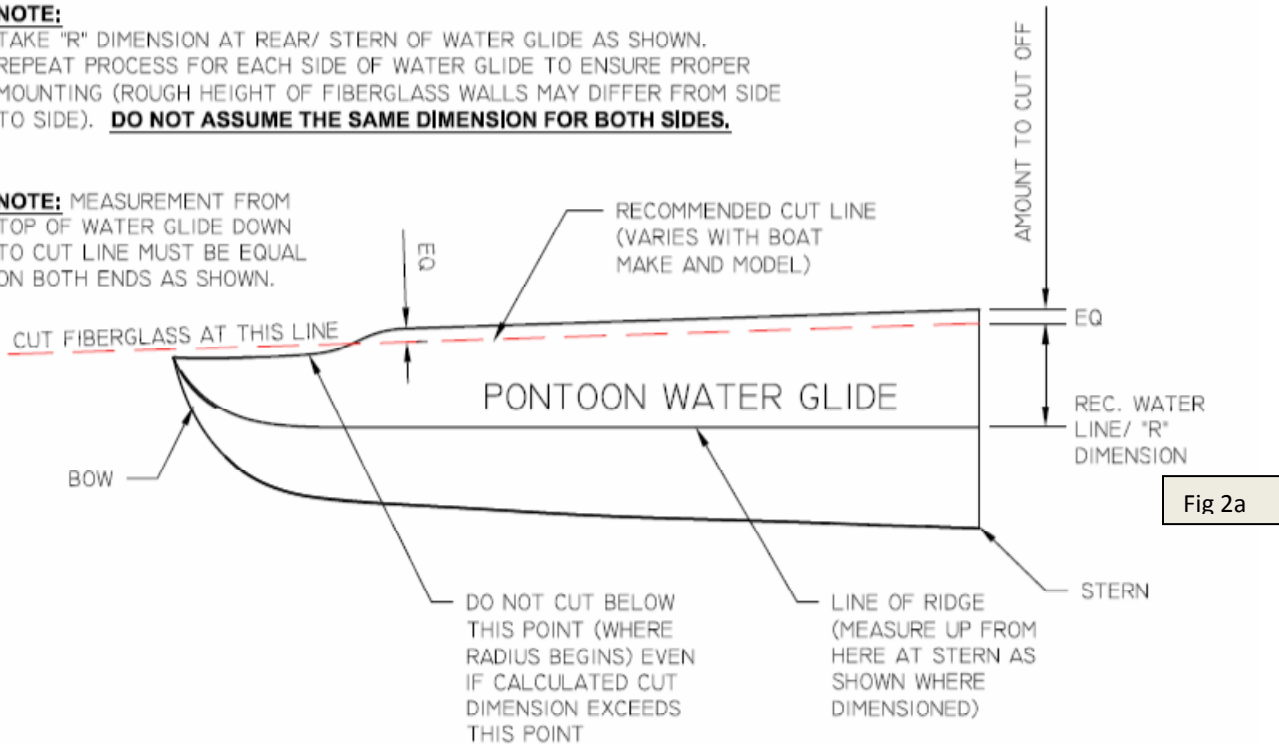
PREPARING YOUR WATER GLIDE FOR INSTALLATION

Once you have your mounting measurements, it's time to mark out the location of the mounting rails on your Water Glide and trim your glide to the right height.

NOTE:

TAKE "R" DIMENSION AT REAR/ STERN OF WATER GLIDE AS SHOWN. REPEAT PROCESS FOR EACH SIDE OF WATER GLIDE TO ENSURE PROPER MOUNTING (ROUGH HEIGHT OF FIBERGLASS WALLS MAY DIFFER FROM SIDE TO SIDE). **DO NOT ASSUME THE SAME DIMENSION FOR BOTH SIDES.**

NOTE: MEASUREMENT FROM TOP OF WATER GLIDE DOWN TO CUT LINE MUST BE EQUAL ON BOTH ENDS AS SHOWN.



Cut off excess fiberglass on both sides, the full length of the Water Glide.

DO NOT CUT THE GLIDE OFF PAST THE CURVE INTO THE NOSE OF GLIDE WHERE FOAM IS!

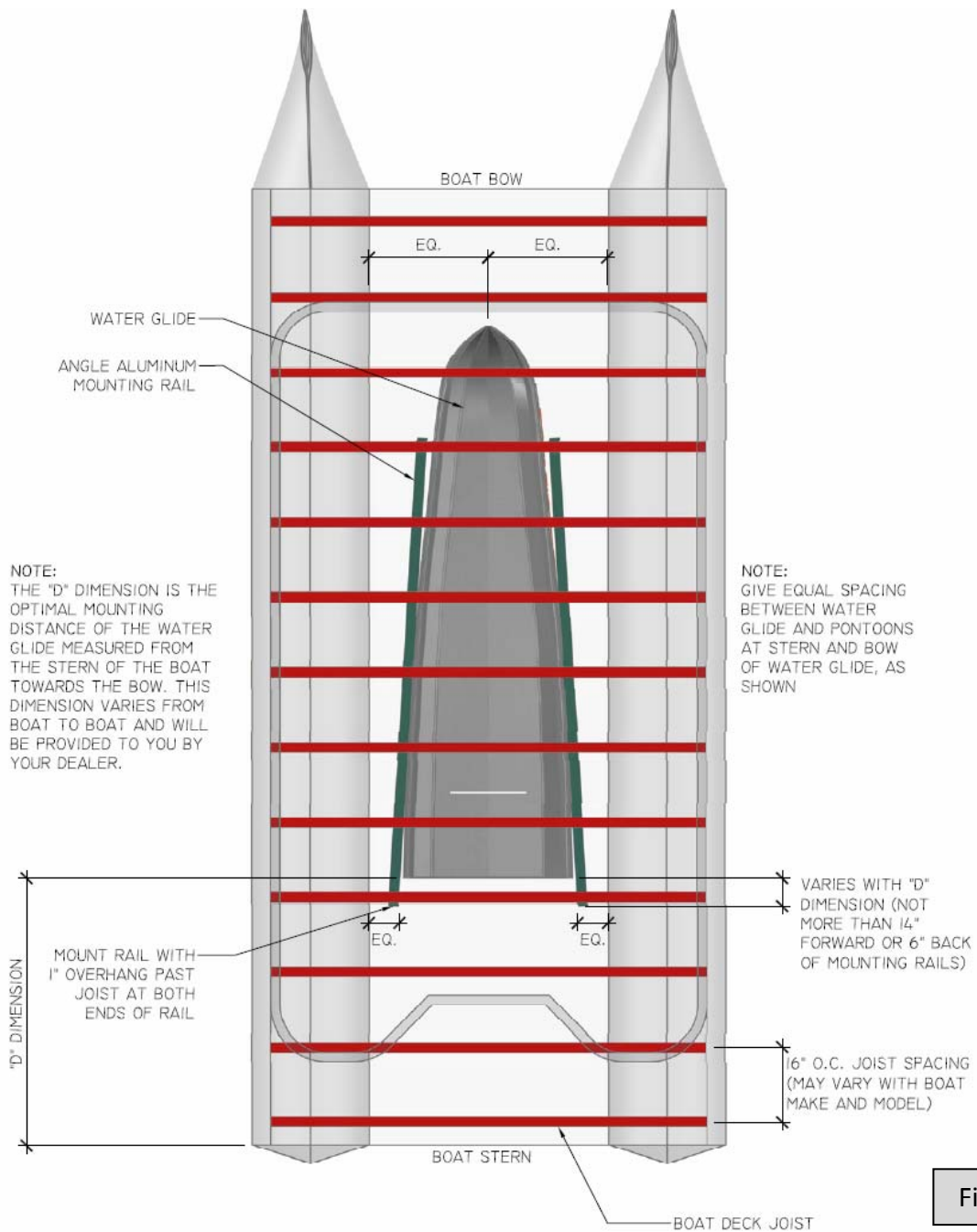
Example: if measurement is 2" at back of Glide, you should cut off 2" full length



STEP- 3

Rail Layout

Now that your Water Glide has been trimmed to the specified dimension it's time to mount the mounting rails to your Water Glide. Using the "D" dimension provided to you, measure that distance forward from the back of you pontoon. Make a mark at that location on the inside of both your pontoons. This point will be the back (stern) location of the Water Glide. From this mark determine the closest floor joist, forward or back. This will be the joist that the back of your rails will mount to. Remember to allow the rails to hang over the entire joist to allow proper support.



STEP- 4

Drilling and Bolting your mounting rails to your Water Glide

Now that you know how far forward or back, you are locating your mounting rails, you will want to clamp them to your Water Glide. If your "R" dimension is equal to or less than 16 1/2 inches Clamp the mounting rail so that it is just above the top edge of the Water Glide by 1/16 – 1/8 of an inch. If your "R" dimension is greater than 16 1/2 inches clamp your rail so the top of your rail equals your "R" dimension . Once you have the mounting rails clamped in place it is time to double check all of the measurements. Make sure both mounting rails are the same distance from the stern or rear of your Water Glide. Now make sure that the mounting rails are the same distance up from the ridge of your Water Glide on both sides and from points front to rear as well. You want to make sure both mounting rails are parallel and in the right location prior to doing any drilling.



You will notice there are a number of hole locations available for bolting your mounting rails to your Water glide. There are 6 (six) locations along the mounting rail (A,B,C,D,E,F) with 4 (four) holes per location(1,2,3,4). Your Pontoon Water Glide Kit comes with the following mounting hardware for this step. 16 stainless steel bolts 3/8 x 1-1/4, 32 stainless steel 3/8 SAE flat washers, 16 stainless steel 3/8 x 1-1/2 fender washers, and 16 stainless steel self locking hex nuts. You will need to drill through 8 holes per mounting rail and Water Glide and install a total of 16 bolts. If the "R" dimension is greater than 16 1/2 " use hole locations 2 & 4, if the "R" is less than or equal to 16 1/2" use locations 1 & 3. If you are mounting the Rails back on your Pontoon Water Glide use locations B,C,D,F if your are mounting them forward use hole locations A,C,D,E.

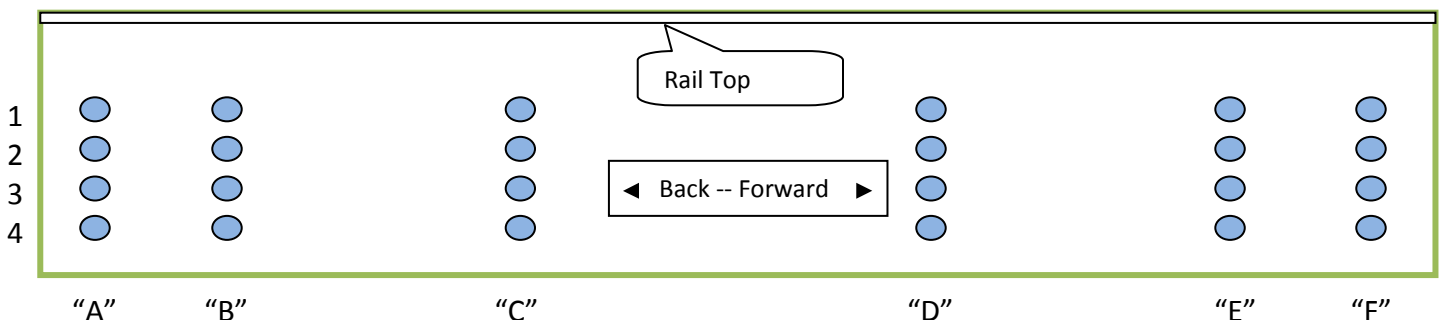


Fig 4b

ASSEMBLE AS FOLLOWS: Mounting Rail, Water Glide, Bolt, Fender Washer, Std Washer, Lock Nut.

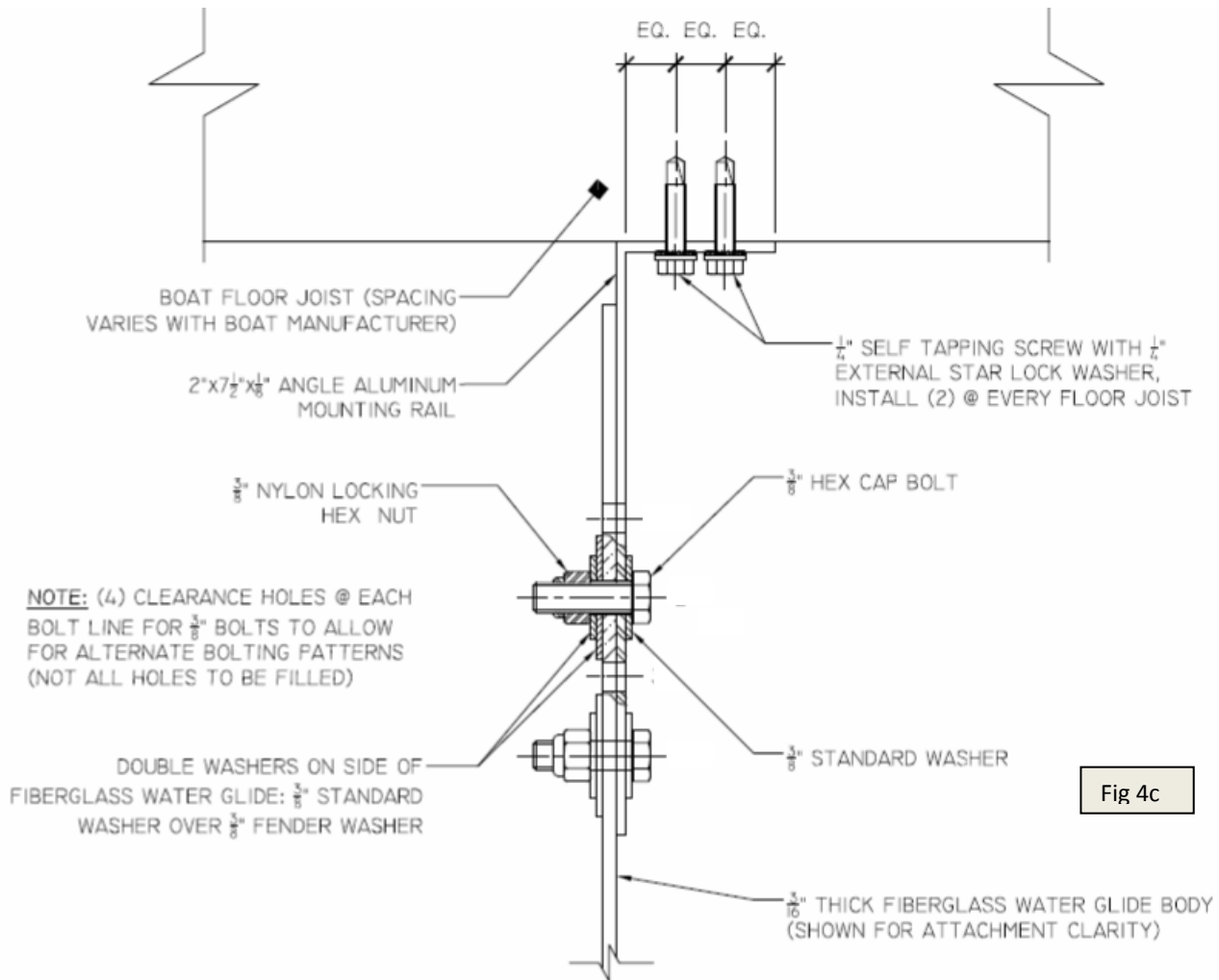


Fig 4c

SPECIAL NOTE: Make sure to lubricate the threads on both the Bolt and the Lock Nut during assembly. This will ease assemble and reduce the potential of bolts seizing up.

STEP - 5

Mounting Your Pontoon Water Glide to your Pontoon Boat

This step will require some very important layout work on the underside of your pontoon boat prior to maneuvering your Pontoon Water Glide into position for mounting. If you have installed the splash guard on your boat you will need to mark the locations of your floor joists on the splash guard with a marker. You will also want to mark in a number of places the location of the mounting rails on the splash guard, so when you raise your Pontoon Water Glide up into its mounting position you will only need to make minimal adjustments for final location prior to mounting.

Your Pontoon Water Glide kit comes with the following mounting hardware for this step, 28 - 1/4" – 14 x 1 1/4" stainless steel self tapping screws, and 28 - 1/4" stainless steel external star lock washers. You will use 4 of the screws and washers per floor joist, 2 per mounting rail (See Figure 4c). Based on the floor joist being 16 inch on centers and the mounting rails covering 7 floor joists for a total of 28. It is recommended that you use a locking compound on the threads of these screws during installation.

Prior to doing any drilling and final mounting, and you have your Pontoon Water Glide positioned and blocked in place under your Pontoon boat check all your measurements.

*-Check to make sure your Pontoon Water Glide is centered between your pontoons front and rear, equal distance on each side.

*-Check position forward and back in relation to the optimal mounting position from the rear of your pontoon.

Once you have confirmed all of your measurements, proceed and mount your Pontoon Water Glide.



STEP - 6

CHECKING THE INSTALLATION

Now that you have the Water Glide mounted on your boat you need to confirm the depth that your Glide is setting in the water. To do this simply make some marks, using a marker or electrical tape, at the stern of the glide directly above the ridge of the Glide in 1/2" increments (See Fig 6a). This will allow you to see how deep the Glide is in the water once you launch your boat.



Fig 6a

Now with your boat in the water look at the marks, we would like to see the Ridge submerged between 1-1.5". If you have any questions about installing your unit or its performance please contact us at **888.311.8313**.

CONCLUSION

Once again we would like to thank you for purchasing the *Pontoon Water Glide*. We hope you enjoy the benefits this unit provides your boat for years to come. As always we would like to hear your experience with the product and the performance changes you experience. When you have a chance drop us a line and let us know***Have Fun and Be Safe!***