

SAMPLE BALLOT
SAMPLE BALLOT
SAMPLE BALLOT
SAMPLE BALLOT
SAMPLE BALLOT
SAMPLE BALLOT
SAMPLE BALLOT
SAMPLE BALLOT
SAMPLE BALLOT
SAMPLE BALLOT
SAMPLE BALLOT
SAMPLE BALLOT

SAMPLE BALLOT
SAMPLE BALLOT
SAMPLE BALLOT
SAMPLE BALLOT
SAMPLE BALLOT
SAMPLE BALLOT
SAMPLE BALLOT
SAMPLE BALLOT
SAMPLE BALLOT
SAMPLE BALLOT
SAMPLE BALLOT
SAMPLE BALLOT

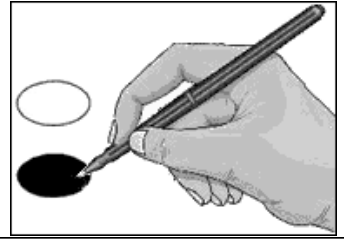
Sample Ballot
Wayne County, North Carolina
November 3, 2020

B0001



BALLOT MARKING INSTRUCTIONS:

- A. With the marking device provided or a black ball point pen, completely fill in the oval to the left of each candidate or selection of your choice as shown.
- B. Where authorized, you may write in a candidate by filling in the oval and writing the name on the Write-in line.
- C. If you tear, deface or wrongly mark this ballot, return it to request a replacement.



FEDERAL OFFICES	STATE OFFICES	
President and Vice President of the United States (You may vote for ONE)	NC Governor (You may vote for ONE)	NC Commissioner of Labor (You may vote for ONE)
<input type="radio"/> Donald J. Trump Michael R. Pence Republican	<input type="radio"/> Al Pisano Constitution	<input type="radio"/> Josh Dobson Republican
<input type="radio"/> Joseph R. Biden Kamala D. Harris Democrat	<input type="radio"/> Roy Cooper Democrat	<input type="radio"/> Jessica Holmes Democrat
<input type="radio"/> Don Blankenship William Mohr Constitution	NC Secretary of State (You may vote for ONE)	NC Superintendent of Public Instruction (You may vote for ONE)
<input type="radio"/> Howie Hawkins Angela Walker Green	NC Lieutenant Governor (You may vote for ONE)	<input type="radio"/> E.C. Sykes Republican
<input type="radio"/> Jo Jorgensen Jeremy (Spike) Cohen Libertarian	<input type="radio"/> Mark Robinson Republican	<input type="radio"/> Elaine Marshall Democrat
<input type="radio"/> Write-in	<input type="radio"/> Yvonne Lewis Holley Democrat	NC Treasurer (You may vote for ONE)
US Senate (You may vote for ONE)	NC Attorney General (You may vote for ONE)	<input type="radio"/> Catherine Truitt Republican
<input type="radio"/> Thom Tillis Republican	<input type="radio"/> Jim O'Neill Republican	<input type="radio"/> Jen Mangrum Democrat
<input type="radio"/> Shannon W. Bray Libertarian	<input type="radio"/> Josh Stein Democrat	NC Auditor (You may vote for ONE)
<input type="radio"/> Cal Cunningham Democrat	NC Supreme Court Chief Justice Seat 1 (You may vote for ONE)	<input type="radio"/> Ronnie Chatterji Democrat
<input type="radio"/> Kevin E. Hayes Constitution	<input type="radio"/> Anthony Wayne (Tony) Street Republican	<input type="radio"/> Dale R. Folwell Republican
US House of Representatives District 1 (You may vote for ONE)	<input type="radio"/> Beth A. Wood Democrat	NC Commissioner of Agriculture (You may vote for ONE)
<input type="radio"/> Sandy Smith Republican	NC Commissioner of Insurance (You may vote for ONE)	<input type="radio"/> Cheri Beasley Democrat
<input type="radio"/> G. K. Butterfield Democrat	<input type="radio"/> Steve Troxler Republican	<input type="radio"/> Paul Newby Republican
	<input type="radio"/> Jenna Wadsworth Democrat	NC Supreme Court Associate Justice Seat 2 (You may vote for ONE)
	NC Commissioner of Insurance (You may vote for ONE)	<input type="radio"/> Phil Berger, Jr. Republican
	<input type="radio"/> Mike Causey Republican	<input type="radio"/> Lucy Inman Democrat
	<input type="radio"/> Wayne Goodwin Democrat	Continue Voting next side →
	- VOTE BOTH SIDES -	
	North Carolina	Ballot Style B0001

SAMPLE BALLOT

SAMPLE BALLOT

SAMPLE BALLOT

SAMPLE BALLOT

SAMPLE BALLOT

SAMPLE BALLOT

SAMPLE BALLOT

SAMPLE BALLOT

SAMPLE BALLOT

SAMPLE BALLOT

SAMPLE BALLOT

SAMPLE BALLOT

<p>NC Supreme Court Associate Justice Seat 4 (You may vote for ONE)</p> <p><input type="radio"/> Tamara Barringer Republican</p> <p><input type="radio"/> Mark Davis Democrat</p>	<p>NC House of Representatives District 10 (You may vote for ONE)</p> <p><input type="radio"/> John Bell Republican</p> <p><input type="radio"/> Carl Martin Democrat</p>	<p>Board of Commissioners District 1 (You may vote for ONE)</p> <p><input type="radio"/> E. Ray Mayo Republican</p>
	DISTRICT OFFICES	<p>Register of Deeds (You may vote for ONE)</p>
<p>NC Court of Appeals Judge Seat 4 (You may vote for ONE)</p> <p><input type="radio"/> Tricia Shields Democrat</p> <p><input type="radio"/> April C. Wood Republican</p>	<p>NC District Court Judge District 8 Seat 2 (You may vote for ONE)</p> <p><input type="radio"/> Jon Sargeant Democrat</p>	<p><input type="radio"/> Constance Bryant Coram Democrat</p> <p><input type="radio"/> _____ Write-in</p>
		NONPARTISAN OFFICES
<p>NC Court of Appeals Judge Seat 5 (You may vote for ONE)</p> <p><input type="radio"/> Lora Christine Cabbage Democrat</p> <p><input type="radio"/> Fred Gore Republican</p>	<p>NC District Court Judge District 8 Seat 3 (You may vote for ONE)</p> <p><input type="radio"/> Curtis Stackhouse Democrat</p>	<p>Board of Education At-Large (You may vote for ONE)</p> <p><input type="radio"/> Tommy Sanders</p> <p><input type="radio"/> Ven Faulk</p> <p><input type="radio"/> _____ Write-in</p>
<p>NC Court of Appeals Judge Seat 6 (You may vote for ONE)</p> <p><input type="radio"/> Gray Styers Democrat</p> <p><input type="radio"/> Chris Dillon Republican</p>	<p>NC District Court Judge District 8 Seat 4 (You may vote for ONE)</p> <p><input type="radio"/> Charles P. Gaylor III Democrat</p>	<p>Soil and Water Conservation District Supervisor (You may vote for ONE)</p> <p><input type="radio"/> Imari Olliver</p> <p><input type="radio"/> Thomas Uzzell</p> <p><input type="radio"/> _____ Write-in</p>
<p>NC Court of Appeals Judge Seat 7 (You may vote for ONE)</p> <p><input type="radio"/> Reuben F. Young Democrat</p> <p><input type="radio"/> Jeff Carpenter Republican</p>	<p>NC District Court Judge District 8 Seat 5 (You may vote for ONE)</p> <p><input type="radio"/> Ericka Y. James Democrat</p>	End of Ballot
<p>NC Court of Appeals Judge Seat 13 (You may vote for ONE)</p> <p><input type="radio"/> Chris Brook Democrat</p> <p><input type="radio"/> Jefferson G. Griffin Republican</p>	<p>NC District Court Judge District 8 Seat 6 (You may vote for ONE)</p> <p><input type="radio"/> Greg Rouse Democrat</p> <p><input type="radio"/> Annette W. Turik Republican</p>	
<p>NC State Senate District 7 (You may vote for ONE)</p> <p><input type="radio"/> Jim Perry Republican</p> <p><input type="radio"/> Donna Lake Democrat</p>	COUNTY OFFICES	
	<p>Board of Commissioners At-Large (You may vote for ONE)</p> <p><input type="radio"/> Alicia Britt Pierce Democrat</p> <p><input type="radio"/> Wayne Aycock Republican</p>	
	- VOTE BOTH SIDES -	
	North Carolina	Ballot Style B0001