

StudioTech™

plasma/lcd a/v component racks



Enhancing the
performance and style
of home entertainment.



StudioTech™

plasma/lcd a/v component racks

StudioTech's Plasma A/V Component racks feature attractive styling that compliments any home environment. Our Plasma racks feature high quality hardwood veneer finishes which offers durability and a rich, sophisticated appearance. The tempered glass shelving provides a strong and stylish platform for components, while the open design of the racks keeps components cool and accessible.

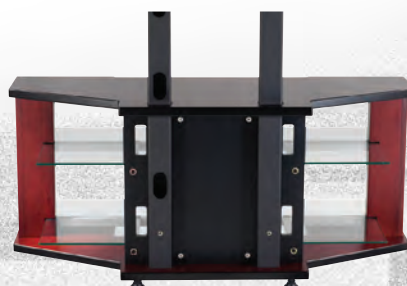
Our racks allow Plasmas to be displayed as they would on a wall, but without the need for a complex installation. Our specially designed mounting system features heavy gauge steel support pillars (optional with DP-2 and AP-2) with a universal Mounting Board. Our universal Mounting Board accommodates mounts from Peerless, Premiere, Draper, Chief and others (mounts sold separately). Mounts from other manufacturers can be easily adapted, making the Mounting Board a versatile solution for any Plasma screen up to 60". The Mounting Board is height adjustable for placing the Plasma in the perfect viewing position.

StudioTech also offers optional Mounting Brackets that may be used in place of mounting hardware from other manufacturers. Use of the StudioTech's mounting brackets is an economical approach to mounting plasmas to the mounting board, and will accommodate Plasmas up to 60" and 4.25" deep.

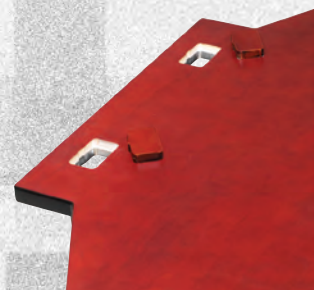
dp series™



Optional rolling casters are available for all DP racks. With casters the DP racks can be easily moved on any surfaces for access to wiring, etc.



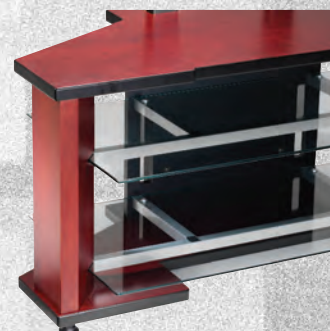
Seen here from the rear, a wide back panel conceals wires for a clean appearance. Large wire openings in the metal pillars conceal wires and cables.



All DP racks feature the ability to use the optional Mounting Board and Pillars. Matching wood caps cover the holes for the Pillars when the optional mounting system is not



20" deep glass shelves provide for the deepest of components.



Glass shelves pass through large corner pillars on each side for a dramatic design effect.



Shown here with optional
Mounting Board and Pillars.
(Mounting Board and Pillars
sold separately.)



**DP-2 Plasma/LCD A/V
Component Rack**
(Shown in Natural Cherry with clear glass)

wood finishes



black ash

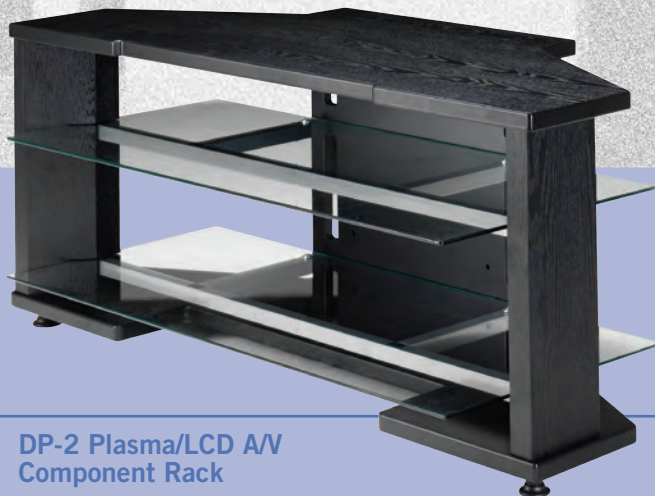


natural



rosewood

additional finishes



**DP-2 Plasma/LCD A/V
Component Rack**
(Shown in Black Ash with clear glass)



**DP-2 Plasma/LCD A/V
Component Rack**
(Shown in Rosewood with clear glass)

StudioTech Plasma/LCD A/V Component Racks feature:

- Elegant, contemporary styling
- Genuine hardwood veneer finishes which offer beauty and durability
- Optional rigid Steel Frame and Mounting Board accommodate most Plasma Displays up to 60"
- Cable Management Systems to conveniently hide wires
- Tempered glass shelves for superior strength

**AP-2 Plasma/LCD
A/V Component Rack**

(Shown in Natural Cherry
with clear glass)



**AP-2 Plasma/LCD
A/V Component Rack**

(Shown in Black Ash
with clear glass)



a d d i t i o n a l f i n i s h e s

ap2
series™



The AP-2 features a 17" deep top shelf that accommodates tabletop stands which come standard with many Plasma/LCD Displays. StudioTech's rear mounting system (mounting board with support pillars) may be purchased separately for rear display mounting. Center Channel speakers can be placed on the top shelf of the AP-2 when using the optional Mounting Board.

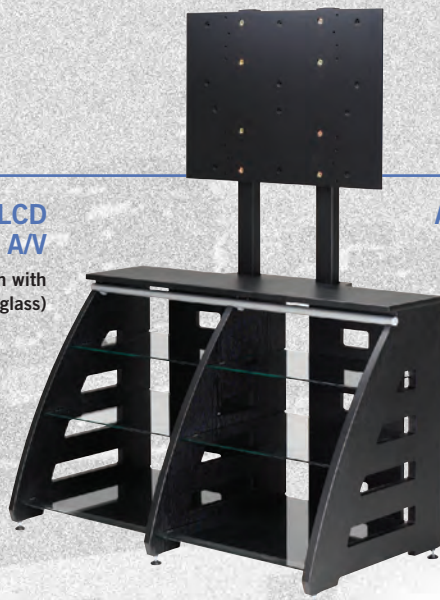


**AP-2 Plasma/LCD A/V
Component Rack**

(Shown in Rosewood with clear glass)

AP-1 Plasma/LCD A/V

(Shown in Black Ash with clear glass)



AP-1 Plasma/LCD A/V Component Rack

(Shown in Natural Cherry with clear glass)



ap1 series™

The AP Series features an attractive and functional design that adds beauty to any entertainment environment. The AP-1 includes 6 tempered glass shelves, providing a solid platform for up to eight AV components. The AP-1 includes our steel mounting frame with a universal Mounting Board, which accommodates Plasma displays up to 60". The top shelf is designed to accommodate most center channel speakers.



The AP-1 shown here from the back with standard Mounting Board and optional Mounting Brackets.

AP-1 Plasma/LCD A/V Component Rack

(Shown in Rosewood with clear glass)

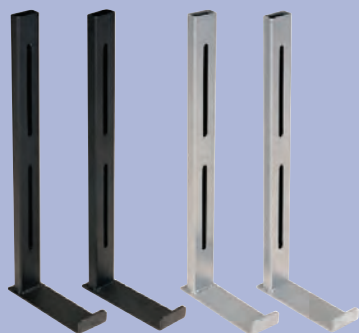


plasma/lcd a/v component racks

StudioTech™

Universal Mounting Board

(Mounting Board shown here with
optional Mounting Brackets)

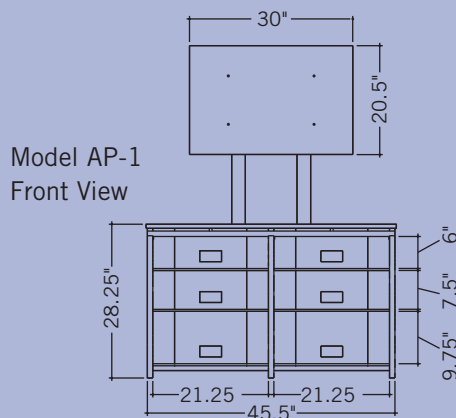


Optional Universal Mounting
Brackets in Black or Silver.



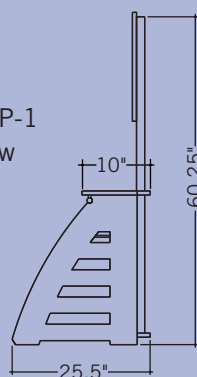
The universal Mounting Board is designed with pre-drilled holes to accommodate mounts from Peerless, Premiere, Draper, Chief and others (mounts sold separately). Mounts from other manufacturers can be easily mounted to the board by drilling holes wherever required which makes the Mounting Board a versatile solution for any Plasma screen up to 60". The Mounting Board is also height adjustable.

Optional universal Mounting Brackets are also available. These brackets are adjustable and can accommodate most Plasmas up to 60".

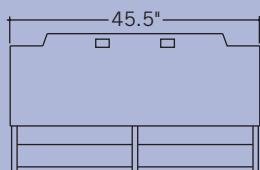


Model AP-1
Front View

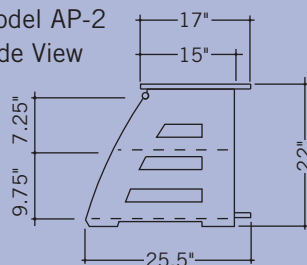
Model AP-1
Side View



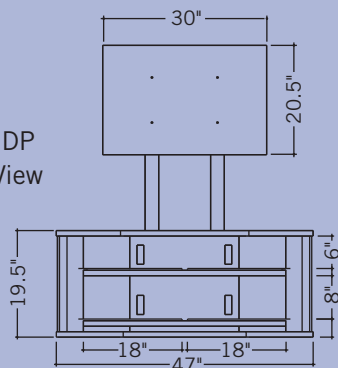
Model AP-2
Top View



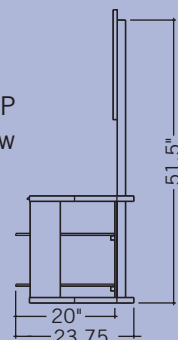
Model AP-2
Side View



Model DP
Front View



Model DP
Side View



Founded in 1989,
StudioTech has grown to become
one of the leading suppliers of
specialty furniture for audio/video and
home theater applications.

StudioTech is widely recognized as an innovator in both the Consumer Electronics and Furniture Industries. The company's broad line of high-quality furniture, component racks and speaker stands have become a favorite among specialty retailers, custom installers and consumers who demand quality, value and visual appeal.

StudioTech...America's premier
designer of audio-video furniture.

To learn more about StudioTech's full line of products, or to locate a Dealer near you, please call 800-887-8834, or visit us on the web at www.studiotech.com.

StudioTech™

visit us online at: www.studiotech.com

StudioTech, DP and AP are trademarks of StudioTech, Inc.
© Copyright 2014 StudioTech, Inc.