

February 2017

www.nmra-scwd.org

Volume 48 No. 6

Super's Report

Bob McGeever
Division Superintendent

This is going to be a short report because I am deep into the floor planning for the next Train Show. I have two new catch phrases:

“Art made it look so easy.”

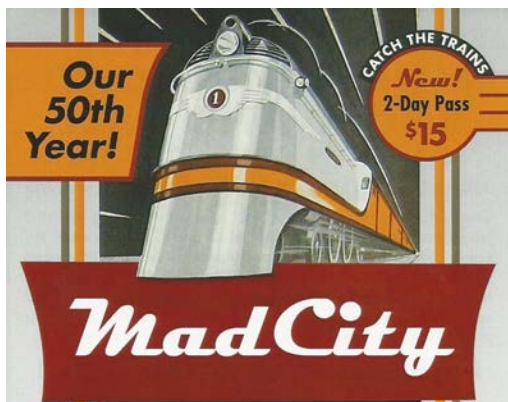
“Oh, I don't remember Art telling me about that.”

When it comes to the Train Show, I am still the new kid on the block. Now that I am deep into the details, I am really impressed with what the Division has been doing for the last few decades. Putting together a show of this size is not trivial. Those of you who have been involved with the show for so many years should be proud of this accomplishment.

We just had a very successful Rail School. You should find a report in this edition of the Bad Order. Written by someone not involved in the Train Show floor planning.

Hope to see you at the February meeting, I should have the floor plan finished by then.

Bob



Next SCWD Meet:

February 5th 2017 1:00 pm
Zor Shrine Temple
575 Zor Shrine Place
Madison WI

Clinics: Page 3

Model & Photo Contests: Page 1

Next BOD Meeting:

February 13th 2017 7:00 pm
Fitchburg Fire Station

Next Youth Group Meeting:

February 18-19 2017 Mad City Train Show
Alliant Energy Center, Exhibition Hall

Contest Column

Dave Lendved and Steve Lanphear
Contest Co-Chairs



The theme for the February meeting is Retired/Repurposed. Railroad equipment and structures are rugged and robust, for both the Model Contest and the Photo Contest. They often outlast the purpose for which they were constructed. An old boxcar can serve as a yard office. A trolley can have new life as a diner. Old Rail lines are sometimes converted to bike trails. The Pennsylvania turnpike was built on the old roadbed of a failed Railroad.

Categories for the February contests are:

- A. Rail Line or Siding
- B. Rail Equipment
- C. Railroad Structure
- D. Non-Railroad Structure

Dave and Steve

Youth Group

Steve Brist

For its January activity, the SCWD Youth Group took part in the annual Rail School. Several of our parents and members helped kids assemble the Blue Box “Make and Take” railcar kits. Special thanks to the Hogan Family, the Bradley Family, Chris Roeben and others for helping to assemble the kits. They were quite busy with many young people anxious to get their kits in running order.



We also put our new HO layout on display and operated trains. We helped many of the attendees run their new “Make and Take” railcar for the first time. Because the new layout is double tracked, we were able to keep trains running nearly all the time. We also gave our young visitors a chance to put their hand on the throttle and run a train with their railcar in the consist. We hope that we gave the Model Railroad hobby positive exposure. We also promoted our club, although many of the attendees were a little too young for our club. Hopefully this will pay off for the hobby in the future.

Our February activity will be participating in the annual Mad City Train Show, February 18-19. I encourage our members to sign up to work a shift at our layout and booth. Participating families will receive free admission to the Show.

Our next monthly meeting at the Zor Shrine will be March 19th. See you at the Train Show!

Steve



Midwest Region News

I have to start this report on a sad note as a longtime member of the NMRA and the Midwest Region Don Cook passed away. Don succumbed to a very aggressive condition that took a lot of us by surprise.

Don served on the MWR Board for as long as I have been on the board and served in many positions. His last position was election committee chair.

Don will be missed by all of us and our condolences go out to his family and close friends.

The New Year is well underway and as I look down the road at the schedule of train shows I see one that won't be happening this year. The annual High Wheeler Train show in the Fox Valley Division has been put on hold because of construction at Harper College. We are all hoping that when the construction ends they will be back up and running.

Here in the Madison area the Mad City Model Railroad Show and Sale will be February 18 & 19 2017. This show will be the 50th Continuous show for the South Central Wisconsin Division. That is a great run no matter how you look at it.

The top prize that is being given away is a round trip ticket for two on Amtrak 's Empire Builder. See their website for all the details. www.nmra-scwd.org

There is also a train show in March that is held by our neighbors in the Rock River Valley Division that will happen on the 25th & 26th that will celebrate their 26th Train Show.

I will be finishing my final term as your president in April this year and my last board meeting will be at the Golden Rails convention in Rockford. The Region will be electing a new President and Vice-President and also some new directors. When you receive your ballot please be sure to fill it out and send it in. Even if there is only one person for each position, this action does show support for those who chose to let their name stand and represent you.

That being said, I would like to invite all SCWD members to join us in Rockford for the next MWR Convention. Again the dates are April 28, 29 & 30, 2017. The

convention is named “Golden Rails” and is the celebration of the Rock River Valley Division’s 50th anniversary. The convention hotel is the Holiday Inn at Rockford IL. Come on down and help them celebrate their anniversary and our hobby. Go to their web site for all the information you would need to get signed up

www.rrvd-nmra.com/2017mwrconvention.com/.



Speaking about conventions, the SCWD will be playing host to the Midwest Region spring convention in 2018. The name of the convention will be the “Capitol 400”. Chairman Ken Hojnacki has assembled a fantastic committee and work is well underway to make our convention a very memorable one.

See You by the Rails

Paul Mangon

President
Midwest Region / NMRA

Layout Tours

Phil Hottmann

With the Super Bowl being on the same day as our meeting and the Packers still in the running, I'm hesitant to schedule any layout tours that we need to travel to.

We may instead just plan to do some in-house video tours or forgo them all together if everyone wants to head out.



Phil



The Clinic Corner

Compiled by Bob Wundrock

For our February meet we have two SCWD members presenting clinics on aspects of their home layouts.

Bill Clancy will present:

History and Construction of the Rio Grande Pacific

This PowerPoint will explain the history, change in design and the building of the layout. It is basically a two-level HO gauge continuous loop of approximately

1,000 feet. We will explain the different scenery techniques utilized as well as the various electronics including the DCC power, block detection, signals and signaling, computer control by Railroad & Co. and operations control by Ship It.

Phil Berry describes his clinic:

Intro to Java Model Railroad Interface (JMRI) and Decoder Pro.

Before I used JMRI I was spending hours programming decoders and was not really happy with the results. So, I was looking for a better way. Many other model railroaders have used JMRI and Decoder Pro. So, I looked into it and downloaded the program and set up the interface on my Digitrax system. Now I spend much less time programming decoders and I am much happier with the results. I have a fleet of locomotives that are all speed matched and have functions mapped to the same buttons. Now that I have JMRI for programming decoders, I have also started looking at other uses in JMRI like using smart phones as DCC throttles and signaling.

Bob

Updated: Interested In Going on A 2017 SCWD Arranged RAILFAN Trip to the *Illinois Railway Museum?*

For those of you who have not been to the IRM, it is an all volunteer run museum in Union, IL containing a large collection of street cars, trolleys, electric, diesel and steam trains and other railroad equipment. I am suggesting either Saturday, May 20th which is C&NW day at IRM featuring everything C&NW, or June 10th which is the first day of RPO (Railway Post Office) weekend with special displays and operations of RPO equipment. We would leave Madison at 8 am and return by 7 pm. Each SCWD member would be allowed to bring along one guest. Estimated cost per person would be \$50-\$60 including the bus, admission and lunch.

Please respond to me by e-mail at: haverdj@tds.net or by phone at: 608 836-7963 if you would be interested on going on this trip. **I will need to get a count shortly after the February 5th SCWD meeting to reserve a bus.**

Thanks,
John Haverberg, SCWD Railfan Trip Coordinator

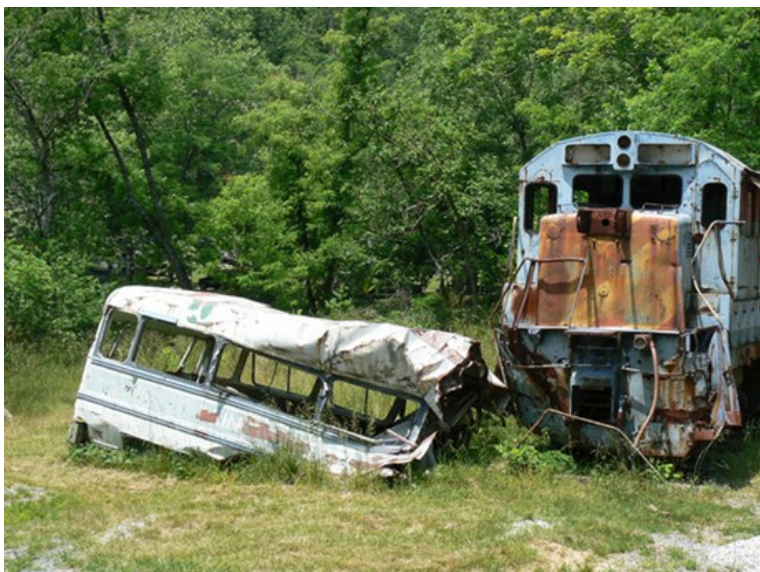
The Fugitive

Jim Feldman, Guest Contributor

One of the greatest special effects in the history of motion pictures had nothing to do with CGI. The producers of the 1993 thriller *The Fugitive* knew that a pivotal early scene would feature a train wreck. They made an unusual decision that the best way to do that was to: *crash a train*. They budgeted \$1.5 million and six months for that scene. It stands as one of the best action scenes in movies. It was done in one take. As director Andrew Davis said, “We only had one chance; we spent ten weeks planning it and sixty seconds shooting it.”

The scene involved 15 remote controlled cameras, a bus stalls on a railroad track and is hit by a freight train consisting of two locomotives, pulling a string of box, tank and flat cars. As star Harrison Ford leaps from the bus, the train plows into it cutting it nearly in half and derailling the entire string. As Ford flees for his life, the locomotive seems to swerve to follow him. He dives to safety as the train smashes itself to bits and bursts into flame. The only CGI involved in the scene is Ford’s Leap from the bus just before the train hits.

For two months, the filmmakers took over a section of the privately owned historical Smoky Mountain Railway in Dillsboro, N.C. They built a 200-yard-long spur for the locomotive to run off on when it was derailed from the main line. The spur was disguised so that it would appear that the train had derailed. The remains of the train (and bus) are still sitting where they were when filming ended, as requested by the GSMRR, the site is a tourist attraction and a stop on one of GSM’s excursion train.



The remains of the shoot in Dillsboro NC

The train consisted of a CSX GE U18B locomotive (1901) and a Norfolk and Western GP30 (536) both were shells purchased as scrap. The trains was pushed by Great Smoky Mountain Railroad’s GP7 #777. Speeds were initially estimated to reach 25 MPH but in fact were closer to 40.

Watch the sequence at <https://www.youtube.com/watch?v=4LF4I1S9rOo>

Jim Feldman, SCWD Member



SCWD Board of Directors Meeting Minutes December 12, 2016



The Board of Directors meeting for the 2015-2016 South Central Wisconsin Division, Midwest Region, National Model Railroad Association was called to order at 7:00 p.m. on December 12, 2016 by Superintendent Bob McGeever. In attendance were Board members: **Bob McGeever, Mike Vivion, Phil Hottmann, Jerry Lawler, Ken Hojnacki, Bill Clancy, and David Lendved.**

Minutes Approval: Minutes for the November 2016 were approved

Paymaster Report: Paymaster report was approved.

Committee Reports:

Achievement Program: There are seven volunteer awards and one scenery awards that are ready to be awarded. It was suggested that we continue to promote the Association Volunteer Award through handouts at the meetings.

Bad Order: Everything continues to operate smoothly

Clinics: Phil Berry will be conducting a JMRI programming code clinic for layout operation and a clinic on using Wi-Fi throttle control using cell phone technology.

Old: There will be an upcoming 2 part weathering clinic.

Contests: Division to create an improved display for the photos. (No action has been taken to date.) There will be no modeling or photography contest for January due to the Rail School event scheduled for January 8th.

Modeling Project for 2016-2017: Construction of a Flat Car. Approximately 16 members have signed up for the project as of the date of this BOD meeting. Members will again be encouraged to sign up at the October meeting.

Make and Take Activity: No update. This year's project will be making loads of poles for railcars at the September meeting. These poles will work well with the modeling project flat car. The 'Make and Take' activity has 16 HO and 5 N Scale participants.

Door prizes: It was determined that there are enough on hand for next two meetings.

Layout tours: There are no layout tours scheduled for the January because of the Rail School activity.

Picnic: John Haverberg shared options for 2017 picnic. Options were East Troy and Little Amerricka. Given the good attendance and the proximity it was agreed to pursue Little Amerricka as the site for this year's picnic.

Publicity: Meeting Information has been forwarded to national magazine for inclusion in their events listing. Bob Boelter is handling PR for the Train Show and this is being handled in a timely fashion.

Rail School: Publicity is in place for the January 8th Rail School

Rail show: CAD software is being used to determine layout at the Alliant Center.

Spring Trip: Discussion as to whether to make it a 1 or 2 day trip. Destinations discussed included the Illinois Railroad Museum and Green Bay. The board will poll the division members and ask their preference for length of trip and destination.

Web Site: The use of PayPal was discussed for managing online Train Show ticket sales. It was determined that this is feasible and that we will pilot this for 2017 and determine how to proceed for 2018

Youth Group: Will be participating in the Olbrich Gardens Christmas display.

Old Business

Wes Peat's Speeder: John is storing it safely at his house until a decision can be made as to appropriate disposal. Because of logistical and management reasons, Mid-Continent Railroad is not going to be the destination for the speeder. It was determined that the speeder would be donated to the Illinois Railroad Museum.

Membership Booth: Bill Marks has the parts to complete the rehab and it will be ready in January

Literature Review:

Literature handouts for the membership booth will be

reviewed and updated as determined to be appropriate. Staff to work the membership booth at the train show needs to be identified.

New Business

Capitol 400: The Capitol 400 has been chosen as the name of the 2018 Regional Convention being hosted by the SCWD. Expected attendance will be 100-125.

Adjournment: Jerry moved and Ken seconded and the Board approved adjournment at 8:15 pm.

Respectively submitted
Jerry Lawler, SCWD Chief Clerk

Rail School

Andy Potts
Rail School Chairman

It's hard to compete with the weather, especially sleet and freezing rain. It's harder still to compete with the NFL, in particular a playoff game featuring the Packers; however, we held our own as well over 100 people attended the annual SCWD Rail School on January 8. From layout planning to scenery, locomotive maintenance to DCC installation, car weathering to decaling, division members shared their wealth of model railroad-ing knowledge and experience with the school attendees. As a non-profit organization, it is the responsibility of the SCWD to provide an educational benefit to the community. The rail school is one of the prime examples of this community service.

Thank you to all of the division members who participated in the school and made it such a great event. In particular, I would like to thank the clinicians: Steve Culbertson, Ken Hojnacki, Phil Hottmann, Ryan Lamb, Sean Lamb, Jim Lane, Steve Lanphear, Paul Mangan, Bill Marks, Jason Miller, Al Potts and Mike Vivion (my apologies to anyone I forgot). Also, thanks to Don Swinton, Larry Enlow and Bill Mitchell for serving as our official greeters. A big thank you to the SCWD Youth Group as well, for spearheading the make-and-take project; it's a highlight of the school.

Andy

For more SCWD and NMRA news and information go on-line to our web site at www.nmra-scwd.org and visit the **Bad Order on our web**







Do you remember?



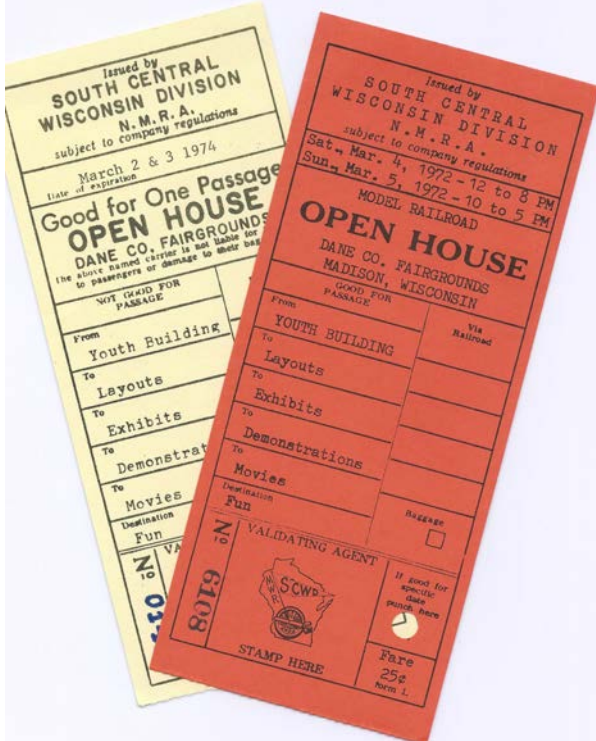
South Central Wisconsin Division
MIDWEST REGION
NATIONAL MODEL RAILROAD ASSOCIATION, INC.

14th Annual



1981 MODEL RAIL SHOW

Dane County Fairgrounds
Forum
Madison, Wisconsin



Issued by
SOUTH CENTRAL WISCONSIN DIVISION
N.M.R.A.
subject to company regulations

March 2 & 3 1974
Date of expiration

Good for One Passage
OPEN HOUSE
DANE CO. FAIRGROUNDS
The above named carrier is not liable for passengers or damage to their baggage.

WE CHASE FOR PASSAGE

From Youth Building To Layouts To Exhibits To Demonstrations To Movies

Destination Fun

VALIDATING AGENT

Stamp Here

Fare 25¢ Norm L.

Key to Exhibitors

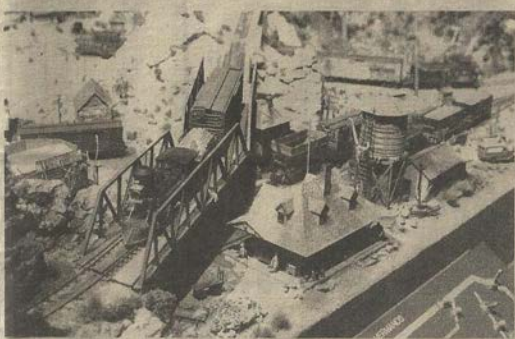
1 Dave Rawlings	Midvale Hobby Shop
2 Pete Olson	Garden Railways
3 Allen Hinck	Ashton Valley RR (NYC)
4 Brian Allen	Waunakee Soc. of Model RR
5 Paul Schoonike	Lionel Op. Display
6 Larry Bunce	Model RR Services/Custom Railroadiana
7 Dale Jensen	Circus Model Builders
8 Louis Paulson	Soo Line Historical and Technical Society
9 Ken Sorocos	Blackhawk Model RR Association
10 Neil Lawrence	Madison HO-Trak
11 Bob Felton	Madison Traction
12 Don Mayo	Capital City "N" gineers
13 Marc Van Clevon	Fond du Lac Model RR Club
14 Gordon Haessly	WISE Div. HO Trak
15 Howard Proeber	Weathering Clinic
16 Bill Keys	Great River Roads Model RR
17 Ed Spitabarth III	South Central Wisconsin Division
18 Giveaway Railroad	HO Module
19 Grant Herling	Port Atkinson RR Modelers
20 Don Holowinski	HO Module
21 Gari Walz	Toy Train Heritage
22 Steve Klein	Pour Lakes "S" Gauge
23 Steve Klein	Boutique
24 Jackie Herling	World's Smallest Circus
25 Tim Powers	HO Milwaukee Road Equipment
26 Norm Bakker	Illinois Railway Museum
27 John DeLamater	Mid-Continent Historical Society
28 Rad Becker	Model Demonstration
29 Rad Becker	Prorail (WARP-Madison)
30 Patricia Robbins	Madison On3 Guild
31 Jim Ziehr	Sn3 Colorado Narrow Gauge
32 Paul Hecht	Hecht Boys' Layout
33 Chris Hecht	Madison Area "S" Gaugers
34 Robert Newton	Hocking Valley Railroad
35 Dave Donkel	

1987 Door Prize Contributors as of 2/23/87


Durango Pros	Floquil-Polly S
Hobbycraft Hobby Shop	IHC Rivarossi
Illinois Railway Museum	Mid-Continent Railway Museum
Midvale Hobby Shop	Northeastern Scale Models
Pikestuff	Railcraft
Tomar Industries	Woodland Scenics

**SOUTH CENTRAL WISCONSIN DIVISION
MIDWEST REGION
NATIONAL MODEL RAILROAD ASSOCIATION
PRESENTS**

**20th. Annual
MODEL RAILROAD SHOW**



**MADISON EDGEWOOD HIGH SCHOOL
MARCH 7-8, 1987**



Rock River Valley Division - NMRA



HOLIDAY INN ROCKFORD, IL
APRIL 28, 29 & 30, 2017



Home Timetable Registration/Fares Map
Clinics Contest Operating Non-Rail Activities

The members of the Rock River Valley Division would like to celebrate the 50th anniversary of our Division with you. We are hosting the 2017 Midwest Region Convention with layout tours featuring many great railroads in our Division, operating sessions on some fine layouts, numerous clinics - some yet to be confirmed - which will include some well-known clinicians, a silent auction (bring items to sell), a photo and model contest, a few great non-rail activities showcasing the Rockford area and a not-to-be missed banquet program by Randy Garnhart and Jerry Pyfer.

www.rrvd-nmra.com/2017mwrconvention.com



If you move, don't forget to notify Kathy Clancy the Bad Order Editor. Changing your address with the NMRA does not change it for Bad Order mailing.

Our 50th Year!

Mad City

MODEL RAILROAD SHOW & SALE

Don't Miss Our 50th Year Celebration!

Feb. 18-19, 2017, 9am-5pm
Alliant Energy Center, Exhibition Hall
Madison, Wisconsin

A GREAT FAMILY ENTERTAINMENT VALUE!



BOB BOELTER'S O SCALE GREAT WESTERN RAILROAD HAS MOVED TO STONEFIELD



The model railroad has been donated to the Wisconsin Historic Site in Cassville to be rebuilt in one of the village's buildings (see stonefieldhistoricsite.org). Funds have to be raised for the reconstruction. Contributions can be made to Stonefield Historic Site, 12195 County Highway V V, Cassville, WI 53806 and identified for "Stonefield Model Railroad". If you'd like to help in other ways contact Bob at bboelter1@gmail.com



Visit gwrr.org for layout pictures and more information



MADISON HOBBY STOP

6622 Mineral Point Road, Madison, WI 53705

Ph: 608-829-3820 • Fax: 608-829-3852 • www.madisonhobbystop.com

Hours: Monday – Friday (10 am – 8 pm) and Saturday (10 am – 5 pm)

Model Railroading • Plastic Model Kits • Rockets & Accessories • Pine Car • Paints • Tools &

*******Now Open Sunday Noon to 5 PM*******

Happy New Year to everyone!



**Didn't get the gift you wanted for Christmas?
Shelves are full of items.**

**We will not be at the Railroad show but will have
a sale going on during the weekend.
New stock arriving daily.**

Thank you for your continued support.

Athearn blue box kits available now

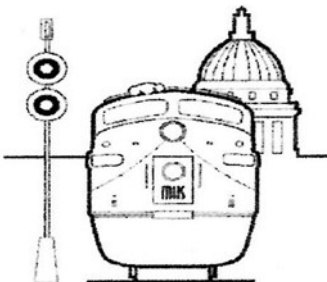
**Preorders are 25% off regular price except
Walthers Proto which is 20% off**

New/old consignment coming in weekly, stop in for best selection

**Remember, most model railroad items are 20% off
with a valid NMRA or other club id card**

Excludes discounted or sale items, magazines, and consignments

Gift Certificates Available



Madison Hobby Stop
Chris Roosli, Proprietor

Adair Shops™

ADAIR SHOPS

Weight Upgrades for Improved Model Railroad Operation



Weight upgrade kits for HO freight and passenger cars (RTR and kits)



HO steel plate and beam load kits



HO & N bridge kits

For a complete list of kits, along with additional photos and sale items, visit our website.
www.adairshops.com

Adair Shops, PO BOX 344, Dyersville, IA 52040
adairshops@yousq.net

Train Guyz LLC

We can make your Model Railroad dreams come true

2903 Robin Court
Fitchburg WI. 53711

Mike Vivion

608-215-6346
Vivion2@tds.net

The Hobby Depot

Brian Stackpole, owner



See us on the web at: www.hobbydepotmonroe.com



835-17th Street
Monroe, Wisconsin 53566
Phone: 608-325-5107

Call ahead to be sure we're open!
email: hobbydpo@tds.net

TRAINS & MORE

Place your Ad Here!!!

Contact

Kathy Clancy Editor

SCWDKathy@aol.com

Lake States Railway Historical Association, Inc.
Dedicated to Professional Collections Management

Richard R. Goddard
President

BARABOO ARCHIVES

330 Lynn Street
Baraboo, WI 53913

Phone 608-356-5555 Web: www.lsrha.org
E-mail: lakestatesarchive@gmail.com

LSRHA is a 501-c-3 non-profit educational corporation

...THE RAILWAY MODEL BUILDER'S RESOURCE...

We are now located in our new building at the corner of Roundhouse Court and Lynn Street in the historic Baraboo rail corridor. Stop in for a tour, browse through our extensive library and archives, view our large collections of 1000's of C&NW, CS&PM&O, CMS&P&P, CRRR, ICRR and other line's structural, locomotive and rail car detail drawings and photos from 100 years of railway history! Phone 608-356-5555 or email us at lakestatesarchive@gmail.com for our hours of operation and additional information.

◆ SEE OUR WEBSITE AT: lsrha.org

South Central Wisconsin Division of the National Model Railroad Association

Publishes eleven issues yearly of the

BAD ORDER

Official Mailing Address:
BAD ORDER
3940 Trempealeau Trail
Verona, WI 53593

Photos in the Bad Order, unless otherwise noted, are by Kathy Clancy

Deadline for submissions: **14th of the month prior to publication, unless otherwise noted.** Email Bad Order Editor at SCWDKATHY@AOL.com

PLEASE PATRONIZE OUR AREA HOBBY STORES

The Hobby Depot – 835 17th Street – Monroe WI
Madison Hobby Stop – 6622 Mineral Point Rd (inside Clock Tower) – Madison WI *

* = Train Show Ticket advance sales

2017 Meeting Time Table

Regular Meeting

Feb 5th 2017
March 5th 2017
April 2nd 2017

BOD

Feb 13th 2017
March 13th 2017
April 10th 2017

Youth Group

Mad City Train Show
March 19th 2017
April 23th 2017

Train Show Committee

Feb 1st 2017
March 1st 2017

