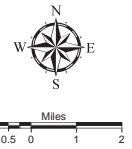
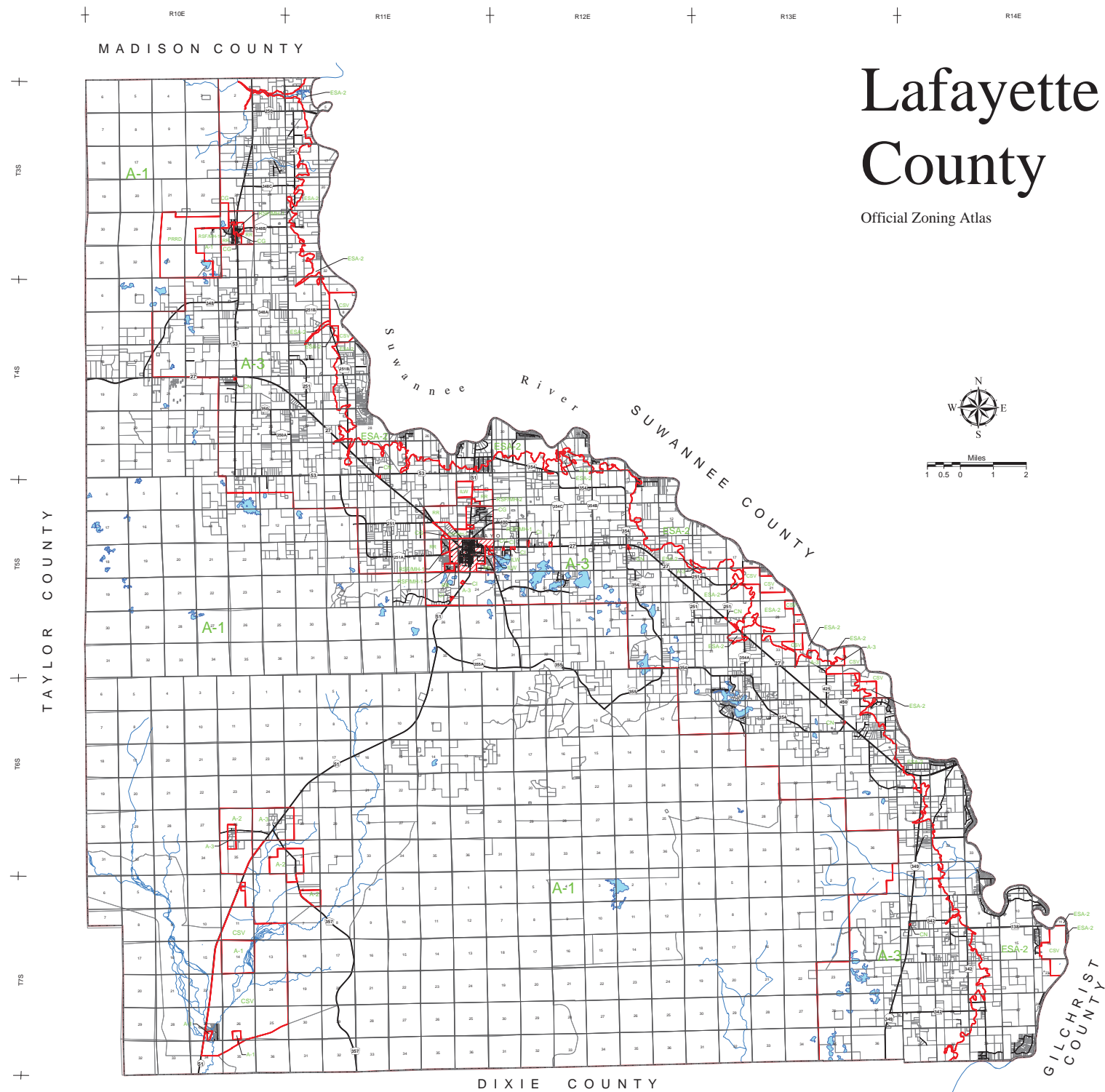


MADISON COUNTY

# Lafayette County

Official Zoning Atlas



- Legend**
- Zoning Boundary
  - Incorporated Area
  - County Boundary Line
  - Lake
  - River or Stream
  - U.S. Highway
  - State Highway
  - County Road

**ZONING DISTRICTS**

CSV	CONSERVATION
ESA-1,2	ENVIRONMENTALLY SENSITIVE AREAS
A-1,2,3	AGRICULTURAL
RE	RESIDENTIAL ESTATE
RSF-1,2	RESIDENTIAL (CONVENTIONAL) SINGLE FAMILY
RSFAMH-1,2	RESIDENTIAL (MOBILE) SINGLE FAMILY/MOBILE HOME
RMH-1,2	RESIDENTIAL MOBILE HOME
RMHP	RESIDENTIAL MOBILE HOME PARK
RMF-1,2	RESIDENTIAL MULTIFAMILY
CN	COMMERCIAL NEIGHBORHOOD
CS	COMMERCIAL GENERAL
CI	COMMERCIAL INTENSIVE
ILW	INDUSTRIAL LIGHT AND WAREHOUSING
I	INDUSTRIAL
PRD	PLANNED RESIDENTIAL DEVELOPMENT
FRD	PLANNED RURAL RESIDENTIAL DEVELOPMENT

ADOPTED MAY 22, 2000 BY ORDINANCE NO. 2000-5  
 AMENDED AUGUST 22, 2005 BY ORDINANCE NO. 05-07  
 AMENDED OCTOBER 9, 2006 BY ORDINANCE NO. 06-04  
 AMENDED OCTOBER 8, 2007 BY ORDINANCE NO. 07-07  
 AMENDED JANUARY 28, 2008 BY ORDINANCE NO. 08-02  
 AMENDED MAY 12, 2008 BY ORDINANCE NOS. 08-04 AND 08-05  
 AMENDED NOVEMBER 10, 2008 BY ORDINANCE NO. 08-09  
 AMENDED DECEMBER 14, 2009 BY ORDINANCE NO. 09-08  
 AMENDED SEPTEMBER 27, 2010 BY ORDINANCE NO. 10-02  
 AMENDED NOVEMBER 22, 2010 BY ORDINANCE NO. 10-06  
 AMENDED MAY 23, 2011 BY ORDINANCE NO. 11-01  
 AMENDED MAY 13, 2013 BY ORDINANCE NO. 13-02  
 AMENDED JULY 28, 2014 BY ORDINANCE NO. 14-04

Note: Please refer to amendment ordinances for legal description of properties to acres or less in size and the corresponding zoning district for these properties.

