



Quality Wholesale Window Coverings

Contract • Hospitality • Healthcare • Residential

STYLE 8000

Cradle to Cradle
Certified™ Bronze

WEAVING
EXCELLENCE
WITH
INNOVATION



		SOLAR OPTICAL PROPERTIES				SHGC/G VALUE g-tot (glass & blind)	
Code	Color	TS	RS	AS	TV	SINGLE 1/4 CL	INSULATING 1 HA
STYLE 8000 - 3%							
S01	Snow	38	54	8	36	0.40	0.27
S02	Eggshell	37	52	11	35	0.41	0.27
S03	Ecru	30	49	21	25	0.42	0.28
S04	Silver	30	46	24	22	0.44	0.29
S05	Smoke	23	38	39	9	0.46	0.30
S06	Seal	21	33	46	8	0.49	0.31
S07	Kohl	18	26	56	7	0.51	0.33



BRONZE



MIF Seal of Approval



PRODUCT CERTIFIED FOR
LOW CHEMICAL EMISSIONS
UL.COM/GG
UL 2818



TS = Solar Transmittance
RS = Solar Reflectance
AS = Solar Absorptance
TV = Visual Transmittance

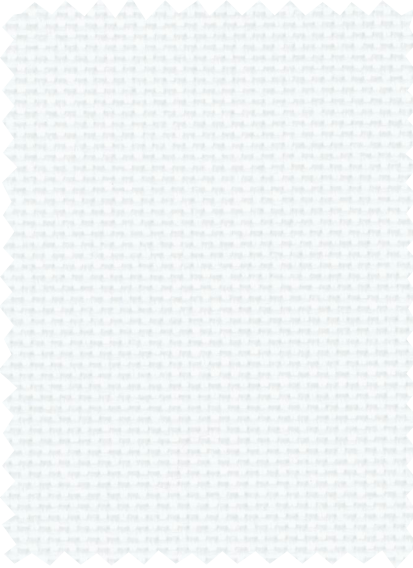
SHGC = Solar Heat Gain Coefficient

1/4 CL = 1/4" Clear Glass
1 HA = 1" Heat Absorbing Glass

Fabrics Installed Internally
Zero-Degree Profile Angle

For additional performance values, test
references and technical definitions visit us at
www.phifer.com.

S01 Snow



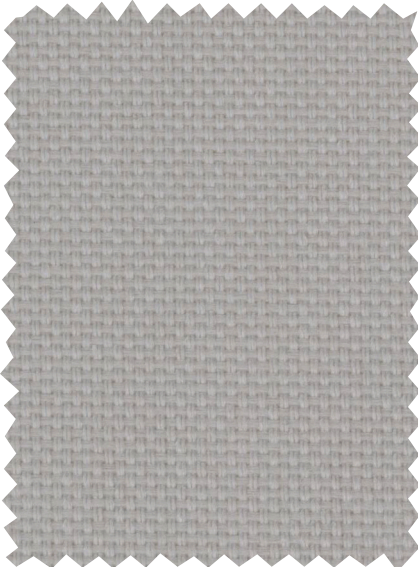
S02 Eggshell



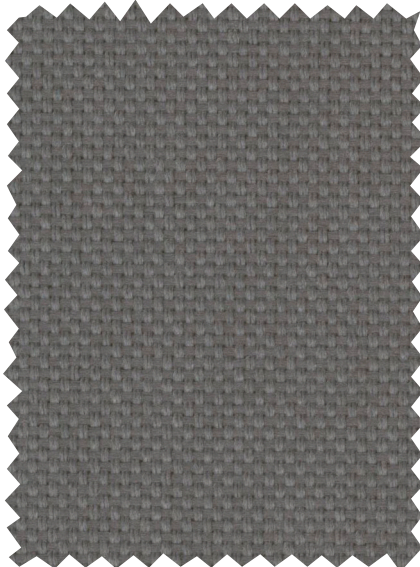
S03 Ecru



S04 Silver



S05 Smoke



S06 Seal



S07 Kohl



Benefits of Style 8000 include:

- Cradle to Cradle Certified™ Bronze
- 100% Recyclable
- PVC free
- Halogen free
- Phthalate free
- Improved energy efficiency in dark colors
- LEED Material Ingredient Disclosure Credit Eligible

STYLE 8000 SPECIFICATIONS

Cradle to Cradle Certified™ Bronze and constructed from 100% polyester yarn, Style 8000 is strong, light weight, and 100% recyclable. The unique 2x2 basketweave provides excellent fabric stability and enhances outward views.

FIRE CLASSIFICATION	California U.S. Title 19 (small scale)	NFPA 701 TM#1 (small scale)
	NFPA 101 (Class A Rating)	IBC Section 803.1.1 (Class A Rating)
	BS 5867 Part 2 Type B Performance	NFPA 701 TM#2 (large scale)
	CAN/ULC-S 109 (large and small scale)	B1 (DIN 4102-1)
	CAN/CGSB2-4.162-M80	

Fire classifications are subject to change. Please go to phifer.com for the most current information.

BACTERIA AND FUNGAL RESISTANCE	ASTM E 2180	ASTM G21
---------------------------------------	-------------	----------

ENVIRONMENTAL CERTIFICATION	Cradle to Cradle Certified™ Bronze
	GREENGUARD GREENGUARD Gold
	Certified to these standards for low chemical emissions into indoor air during product usage

LEAD FREE	RoHS/Directive 2002/95/EC	REACH (EC 1907/2006) compliant
	ANSI/WCMA A 100.1-2007 for lead content	
	US Consumer Product Safety Commission Section 101	

WARRANTY	5-year interior
-----------------	-----------------

ACOUSTICAL PERFORMANCE	NRC (Noise Reduction Coefficient) and SAA (Sound Absorption Average) tested in accordance with ASTM C423-09a
-------------------------------	--

UV PROTECTION	Seal of Approval by the Melanoma International Foundation (MIF) for effectiveness in preventing sun damage to the skin or eyes
----------------------	--

CLEANING INSTRUCTIONS	Regular light dusting is suggested. Avoid rigorous vacuuming. Test an inconspicuous area before applying any cleaners.
------------------------------	--

RECOMMENDED CUTTING METHODS	This fabric should be cut using ultrasonic or other heat generated methods.
------------------------------------	---

STYLE 8000

WIDTHS	118" 300 cm
ROLL LENGTH	30 Linear Yards 27.4 m
COMPOSITION	100% Polyester
MESH WEIGHT	6.34 oz/yd ² 215 g/m ²
FABRIC THICKNESS	0.019 in 0.47 mm
OPENNESS FACTOR	Approximately 3%
UV BLOCKAGE	Approximately 97%
ACOUSTICAL VALUE	NRC .20 / SAA .22

PHIFER
INCORPORATED

P. O. Box 1700 • Tuscaloosa, Alabama 35403-1700 USA
Phone: 205.345.2120 • FAX: 205.391.0799
Toll Free USA/Canada: 1.800.221.5497
www.phifer.com • ISO Registered



© SheerWeave is a registered trademark of PHIFER INCORPORATED.
™ Cradle to Cradle Certified is a mark licensed by the Cradle to Cradle Products Innovation Institute
™ UL, the UL logos and the UL mark are trademarks of UL LLC.
Photo courtesy of M+N Textiles, The Netherlands.
© PHIFER INCORPORATED V18 3035030