

The June 2016 Newsletter Gardens Gate

Port St. Lucie
Botanical Gardens
Florida



Shade House Appeal

Dear Friends:

In keeping with the continuing goal to enhance the Propagation Area of the Port St. Lucie Botanical Gardens, the Horticulture Committee is proposing the installation of a 20' x 24' Shade House.

This will enable the Gardens to house many additional plants and include ornamental plants that could be propagated and sold from our Gardens throughout the year. At the present time, we do not possess the capabilities for successfully growing and maintaining the varieties of ornamental plants which could increase revenue for Friends and provide better service to the visiting public.

Continued on Pg 3

CONTENTS :

President's Message	Pg2	May Calendar	Pg11
Board & Committees	Pg2	Dalton Learning Center	Pg12
National Public Gardens Day 2016	Pg5	Garden of The Month	Pg13
Behind The Scenes	Pg6	Can You Dig It	Pg15
Out & About with The Gardens	Pg7	Horticulture Happenings	Pg17
First How-To Series Class A Success	Pg8	Central Fla Gardening May Calendar	Pg19
Ladybug Launch Pictures	Pg9	HORTence	Pg20
		Happenings @ The Gardens	Pg22
		Supporters & Jazz Jams	Pg26

Reminder

**CHILDREN'S EVENT
NATURE'S NIGHTTIME CRITTERS
JUNE 25TH • 11AM - NOON**



Port St. Lucie Botanical Gardens

2410 SE Westmoreland Blvd.

Port St. Lucie, FL 34952

Phone: 772.337.1959

Fax: 772.237.5952

E-mail: info@pslbotanicalgardens.org

Web: www.pslbotanicalgardens.org

Hours: Wednesday - Saturday 10am - 4pm

Sunday Noon - 4pm

Closed Monday, Tuesday & Holidays

Suggested Donations:

Adults \$5

Students \$2

Children 12 & Under Welcome

Members and Active Military

(with family) Welcome (IDs required)

Mission Statement . . .

Friends' mission is to create and maintain a beautiful, serene sanctuary in the center of Port St. Lucie that is environmentally sound and naturally diverse and to provide educational, cultural and recreational opportunities for all who visit.

Officers & Directors . . .

President:	Joleen King
Vice President:	Illona Christie
Secretary:	Claire Clark
Treasurer:	Cheri Mabry
Directors:	Brenda Gustafson
	Jeffrey Policar
	Bill Neinast
	Gloria "Gigi" Norelli
	Kate O'Neill
	Jennifer Scee
	Tim Sutton

Standing Committee Chairs . . .

Strategic Planning Committee:	Joleen King
Horticulture Committee:	Bill Neinast
Finance Committee:	Cheri Mabry
Membership & Volunteer Committee:	Illona Christie
Gift Shop Committee:	Jennifer Scee
Resource Development Committee:	Claire Clark
Election Committee:	TBD

Newsletter...

Editor:	Judy Nash-Wade
Design:	Mark Barnes

The Port St. Lucie Botanical Gardens is managed and operated by Friends of the Port St. Lucie Botanical Gardens, Inc. The Friends of the Port St. Lucie Botanical Gardens, Inc. receives no funding from any government agency. Your admission donations help us maintain and grow The Gardens.

PRESIDENT'S MESSAGE...

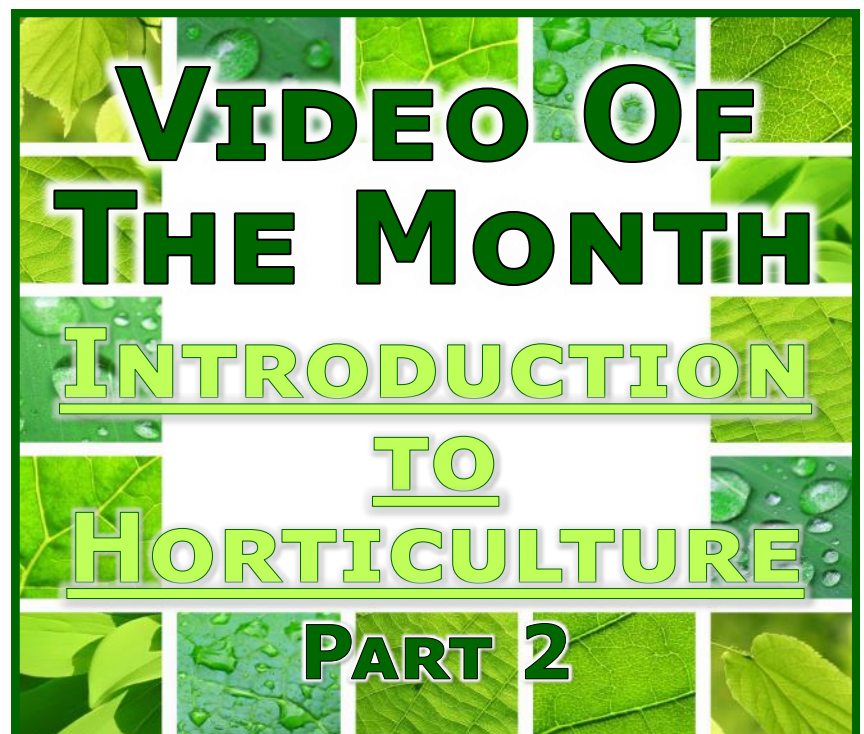
June already! Where has the year gone? Summer is looming and volunteers at the Gardens are identifying projects and maintenance that can be accomplished out of the hot sun .. a real challenge!



We're asked occasionally where our funding comes from and the answer varies. Our Gift Shop contributes, as does the Propagation department with plant sales. Events at the Gardens (weddings, family events, memorials, etc.) contribute to the bottom line also. What the Gardens has done little of is fundraising or soliciting our members for contributions. Whether this has been a good policy or a missed opportunity is being debated.

What projects would we identify for fundraising? Right now, we are launching our first appeal effort for a Shade House in the propagation garden, which will provide an important bridge between our misting table for newly propagated plants, to the hardened-off, full sun presentation of merchandise in the sales area. This newsletter begins the opportunity to contribute monetarily to this project. Our estimated cost is \$5,000 and we've already been gifted \$1,000 by the St Lucie West Garden Club toward the Shade House, with a proposed completion date of August 2016. Please give our Shade House Appeal your attention and consideration, with my thanks.

Joleen King
President



Benefits of the new shade house:

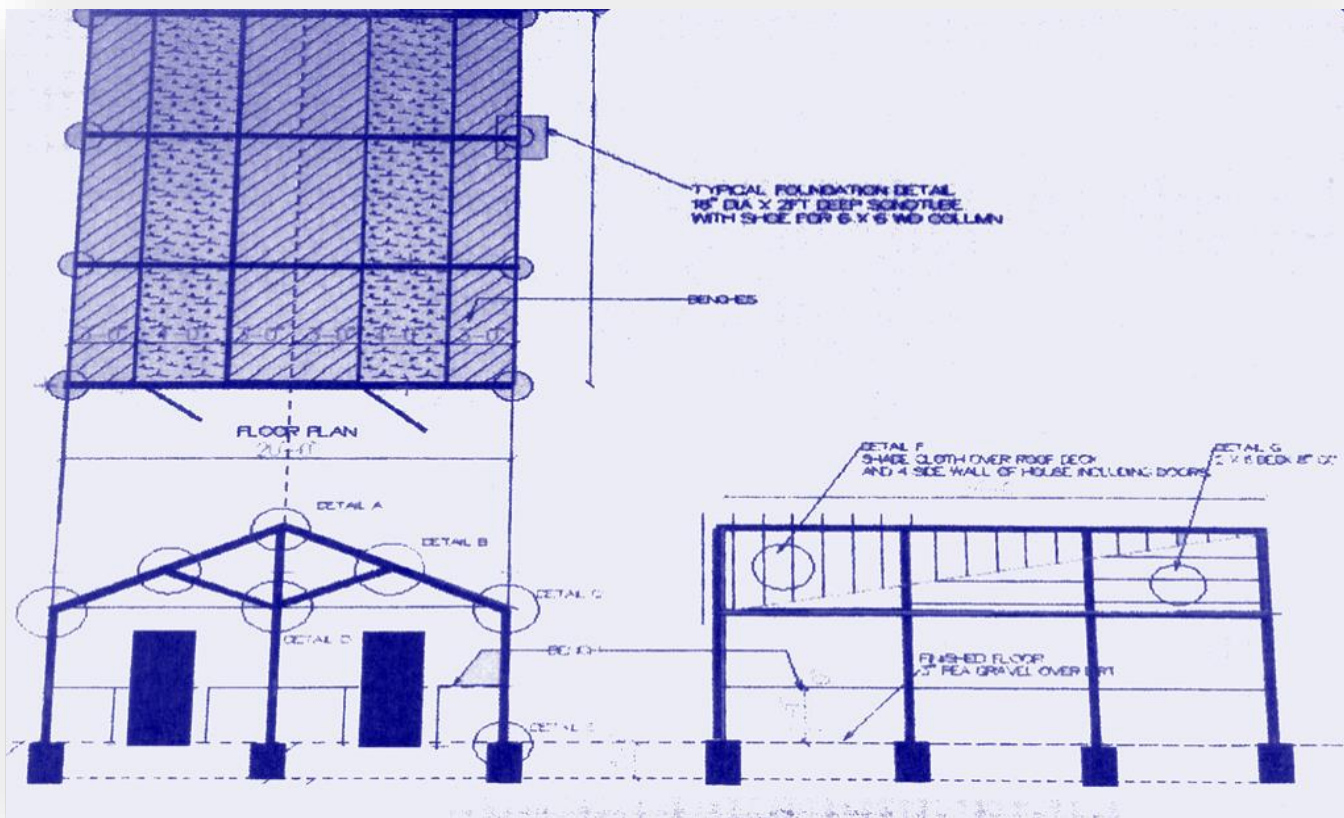
1. Further develop and cultivate the propagation program to enable the inclusion of garden and ornamental plants.
2. Allow the individual Garden Rooms the facility and space to grow and expand their individual specialty plants.
3. Create additional opportunity for community education in propagation techniques.
4. Generate additional income to benefit the propagation area and the Gardens Growth. All propagation activity is completed by volunteers with sales receipts returned to the Friends of the Port St. Lucie Gardens for further enhancement of the Gardens.

Research has shown that other Botanical Gardens in Florida that have installed shade houses have found them beneficial by growing their propagation programs and overall benefit to their Gardens.

Our dollar goal for this important project is \$5000.00. We have received a generous donation from the St. Lucie West Garden Club and would like to solicit additional funding to complete this important project from our Founding members, Members, Volunteers and Friends of the Garden. Donations can be made to the Port St. Lucie Botanical Gardens.

WE HOPE YOU WILL JOIN WITH US TO MAKE THIS A SUCCESSFUL FUNDRAISER!

Board of Directors' of the Port St. Lucie Botanical Garden



charitable research
 face-to-face environment
 fundraising donations
 voluntary resources
 contributions request
 money organizations politics
 campaign non-profit events
 grassroots religious



Shade House Appeal

Goal
\$5,000



In keeping with the continuing goal to enhance the Port St. Lucie Botanical Gardens, the Horticulture Committee has proposed the installation of a 20' x 24' Shade House in the Propagation area. Benefits include:

1. Further develop and cultivate the propagation program to enable the inclusion of garden and ornamental plants.
2. Allow our Garden Societies the facility and space to grow and expand their collections.
3. Provide an additional venue for community education in propagation techniques.
4. Generate additional income to benefit the Propagation area and The Gardens growth.

Our dollar goal for this important project is \$5000.00 and we are already over 20% to our goal.

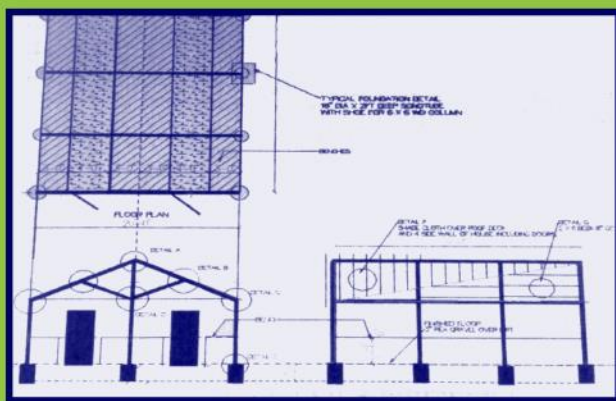
Donors

St. Lucie West Garden Club
\$1,000

Brenda Gustafson
\$100

ADD YOUR NAME HERE
HELP US REACH OUR GOAL

WE HOPE YOU WILL JOIN WITH US TO MAKE THIS A SUCCESSFUL FUNDRAISER!



Donations can be made on-line at:
www.pslbotanicalgardens.org/donate

You can also mail your check to:
Friends of the Port St. Lucie Botanical Gardens, Inc.
 2410 SE Westmoreland Blvd., Port St. Lucie, FL 34952

Donations are deductible to the extent allowed by law
 Friends is a 501(c)(3) non-profit organization

CLICK ABOVE TO DONATE ON-LINE

NATIONAL PUBLIC GARDENS DAY 2016...

The Port St. Lucie Botanical Gardens was one of many participants for this years National Public Gardens Day which was held on Friday - May 6th. Representatives from the various Garden Rooms located in The Gardens were on hand to answer questions and provide tours to the public throughout the day. Sponsored by the American Public Gardens Association this national day of celebrations is used to raise awareness of America's Public Gardens.



NATIONAL PUBLIC GARDENS DAY



NATIONAL PUBLIC GARDENS DAY



NATIONAL PUBLIC GARDENS DAY



NATIONAL PUBLIC GARDENS DAY



BEHIND THE SCENES:

OUR PSLBG VOLUNTEERS IN ACTION!

PLANT ID, COLLECTIONS & ACCESSIONING



On most Sunday mornings, you'll find this dedicated Plant ID committee 'out and about' in the Gardens doing a very important job. They are in the process of identifying every plant in the garden with the expectation that every plant will be identified, labeled, catalogued and entered into an intricate plant database.

Rich Zwack, Chair and computer geek is heading up this committee of five enthusiastic PSLBG Volunteers and Master Gardeners. They have solicited the assistance of Tim Sutton, Garden Room Liaison, who is working closely with the Garden Room Chairs and the committee in identifying their individual plants.

A big thanks to this team - Rich, Lynda, Wilson, Heather & Isabel for a taking on this much needed project.



Wilson Dormevil, Rich Zwack (Chair), Lynda Salsbury
Not shown: Heather Furnari and Isabel Raposo

If you'd like to get involved with helping the Plant ID Committee, please let us know.

Out & About



With The Gardens



Above: Joleen King and Illona Christie at the Master Gardeners' Spring Into Gardening Festival.

Right: Joleen King and Gigi Norelli at the Oxbow Earth Day.



A note of thanks from Oxbow:

We at St. Lucie County Environmental Resources Department's Oxbow Eco-Center wish to extend a big THANK YOU for your organizations' participation in our 12th Annual Earth Day Celebration. This year, an estimated 3000 visitors turned out for the event, making this one of Oxbow's most successful Earth Day Celebrations ever! The success of our event is due to the wide variety of exhibitors and performers who were a part of the festivities.

I had a few people tell me they really enjoyed speaking with you all. The live lady beetles were a big hit so thank you for bringing them. It was a pleasure having your participation in this event.

Thank you whole-heartedly for your support of our event. We look forward to hopefully seeing you again at Oxbow's 2017 Earth Day celebration on April 22, 2017.

Sincerely,

Amanda Thompson

Natural Resources Management Coordinator

FIRST HORTICULTURE HOW-TO SERIES A SUCCESS...

The first in the Friends of the PSLBG series of the 'Horticulture How-To Series' was an immense success. Jamey Liddell, Master Gardener, arborist and owner of Southern Branch, Inc. presented a very well-informed and articulate presentation on the Proper Pruning of Trees. The feedback was very positive and we are looking forward to having Jamey back for a follow-up workshop on Pruning soon.

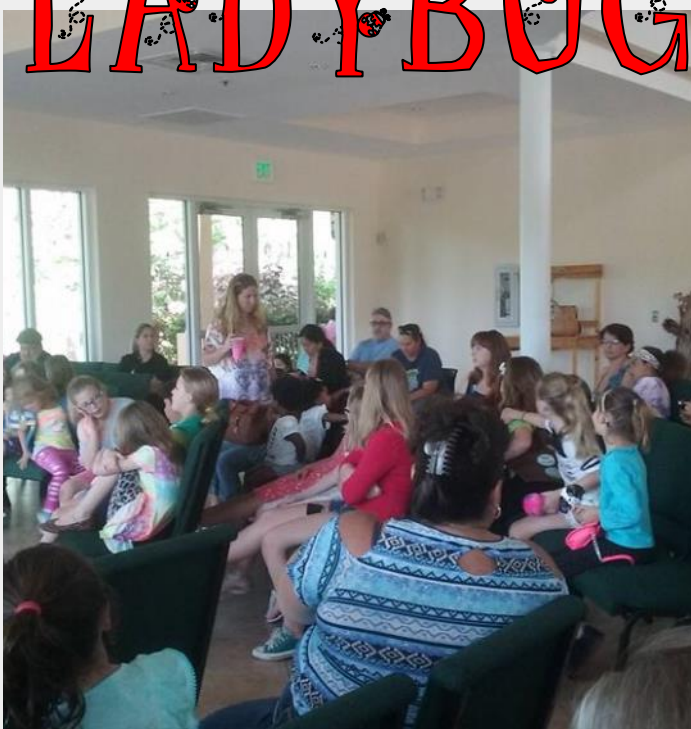


GARDENS PICTURE GALLERY...



LADYBUG

LAUNCH



Are you a Member of Friends? Friends Membership is...



Horticulture



Education



Preservation



Community



**Become a Member of a Growing Community...
Friends of the Port St. Lucie Botanical Gardens, Inc.**



**Click Here to
Join or Renew Your
Membership Today**



1 st	Advanced Beginner Spanish Classes	10:00 - 11:30 am	Fee info. call 772.924.1002
1 st	German American Club Board Mtg.	2:00 pm - 4:00 pm	Members Welcome
1 st	Ft Pierce Jazz & Blues Concert	6:30 - 9:30 pm	\$ 5 Donation, Members \$4
2 nd	German American Chorus Rehearsal	2:00 pm - 4:00 pm	Members Welcome
8 th	Advanced Beginner Spanish Classes	10:00 - 11:30 am	Fee info. call 772.924.1002
9 th	PSL Anglers Club Meeting	6:30 - 9:00 pm	All Welcome
13th	Board of Directors Meeting	5:00 - 7:00 pm	Members Welcome
14 th	Orchid Society Meeting	11:00 am - 3:00 pm	Members Welcome
15 th	Advanced Beginner Spanish Classes	10:00 - 11:30 am	Fee info. call 772.924.1002
15 th	Multicultural Resource Center students	12:30 - 2:00 pm	School only event
15 th	Ft Pierce Jazz & Blues Concert	6:30 - 9:30 pm	\$5 Donation, Members \$4
16 th	German American Chorus Rehearsal	2:00 - 4:00 PM	Members Only
22 nd	Advanced Beginner Spanish Classes	10:00 - 11:30 am	Fee info. call 772.924.1002
25th	Children's' Program: Nature's Nighttime Critters	11:00 am - 12:00 noon	Children Ages 5-12. Registration Required. Please call 772.337.1959.
26 th	Resource Development Committee	1:00 - 2:30 pm	Members Welcome
29 th	Advanced Beginner Spanish Classes	10:00 - 11:30 am	Fee info. call 772.924.1002
29 th	Ft Pierce Jazz & Blues Concert	6:30 - 9:30 pm	\$ 5 Donation, Members \$4

For more information on these & other events, please call 772.337.1959

DALTON LEARNING CENTER TOURS THE GARDENS:

Dalton Learning Center for Preschool & Kindergarten toured the Port St. Lucie Botanical Center in April. Approximately 15 five and six year old Kindergarten children and their teachers visited all 10 gardens and the propagation area. They were very surprised to hear that they were the same age as the "Gardens".

Their favorite places were the Orchid, Cactus, Bromeliad and the Butterfly Garden. But let's not forget the Gopher Tortoise Home where we have some new gopher eggs waiting to hatch and the Osprey nest where the children were so excited to see the osprey babies peeping out to see them.

All in a day at the Port St. Lucie Botanical Gardens!



GARDEN OF THE MONTH: BROMELIAD GARDEN

MAINTAINED BY THE ST. LUCIE WEST GARDEN CLUB

One of the first sights that you see when you enter the Port St. Lucie Botanical Gardens is The Bromeliad "Room." It is the largest of the "rooms" at the Botanical Gardens, containing more than 32 varieties of these colorful plants, which produce "pups," providing a constant source of new plants for the Propagation Garden.

This work is fulfilling and our members have been out there pruning and planting...weather conditions permitting...since the Botanical Gardens opened more than five years ago.

The team, headed by Uta McFadden, includes Bea Cooper, Ellabee Scully, Judy Spellman and a variety of SLWGC members, who don long gloves to protect themselves against the Bromeliad spikes, a natural defense mechanisms of the genus.

In addition to working onsite, Former Club President, Gigi Norelli, and Treasurer, Cheri Mabry, also serve on the Board of the Botanical Gardens. This year, at the Botanica 2016 Plant Sale Garden Festival, the St. Lucie West Garden Club manned a booth...ready to answer any questions about the care of bromeliads.

The St. Lucie West Garden Club is proud to be an integral part of the growth of the Port St. Lucie Botanical Gardens since its opening. So...the next time you are at The Gardens, take the time to visit us. You will find a friendly face, a Garden Guide and volunteers ready to help you discover the beauty surrounding you!



GARDEN OF THE MONTH: BROMELIAD GARDEN





Can You Dig It?



BOK TOWER GARDENS

Bok Tower Gardens (also known as Bok Mountain Lake Sanctuary and Singing Tower) is a National Historic Landmark, contemplative garden, and bird sanctuary located north of Lake Wales, Florida, United States. It consists of a 250-acre (100 ha) garden, the 205-foot (62 m) tall Singing Tower with its carillon bells, Pine Ridge Trail, Pinewood Estate, and a visitor center. The tower is built upon Iron Mountain, one of the highest points of peninsular Florida, estimated to be 295 feet (90 m) above sea level. It is a National Historic Landmark that is listed on the National Register of Historic Places.

The gardens began in 1921 when a Dutch immigrant, Edward W. Bok, editor of the popular women's magazine Ladies Home Journal and his wife, Mary Louise Curtis Bok, who would found the Curtis Institute of Music in Philadelphia in 1924, were spending the winter beside Florida's Lake Wales Ridge and decided to create a bird sanctuary on its highest hill (298 feet above sea level, 91 meters).

Bok commissioned noted landscape architect Frederick Law Olmsted, Jr. to transform what then was an arid sandhill into "a spot of beauty second to none in the country". The first year was spent digging trenches and laying pipes for irrigation, after which soil was brought to the site by thousands of truck loads and plantings began. The Olmsted plan included the planting of 1,000 large live oaks, 10,000 azaleas, 100 sabal palms, 300 magnolias, and 500 gordonias, as well as hundreds of fruit



shrubs such as blueberry and holly.

Attempts were made to introduce flamingos to the sanctuary several times, which is why early renderings of the tower show flamingos at the reflection pool rather than swans. These early efforts were unsuccessful, however, as the flamingos were not native to central Florida and could not survive the winters that were cooler than those of southern Florida, where they may be found.

Under construction for over five years, Bok Tower Gardens was dedicated by President Calvin Coolidge on February 1, 1929. Edward Bok died on January 9, 1930 and was interred at the base of the tower.

Frederick Law Olmsted, Jr. designed the meandering gardens of Bok Tower Gardens to feature acres of ferns, palms, oaks, pines, and wetland plants. The plantings also include camellias, tree ferns, creeping fig, yaupon and dahoon holly, Asiatic jasmine, justicia, crinum and spider lily, monstera, wax myrtle, date and sabal palm, papyrus, philodendron, blue plumbago, and horsetail rush. The site is a refuge for more than a hundred bird species. Wild turkey and groups of sandhill cranes are also often seen wandering the grounds.

Throughout the year, there are numerous events designed to draw visitors to the Gardens. These events include concerts featuring jazz, orchestras, and the carillon bells of the Tower. The most popular are the semi-annual symphony concerts, given in the evening once in the fall and once in the spring. These events draw thousands of visitors to the large field in front of the Tower for an outdoor picnic. They feature music from both the symphony orchestra and carillon bells.



Bok Tower Gardens Christmas Events

(SEASONAL REPEAT)

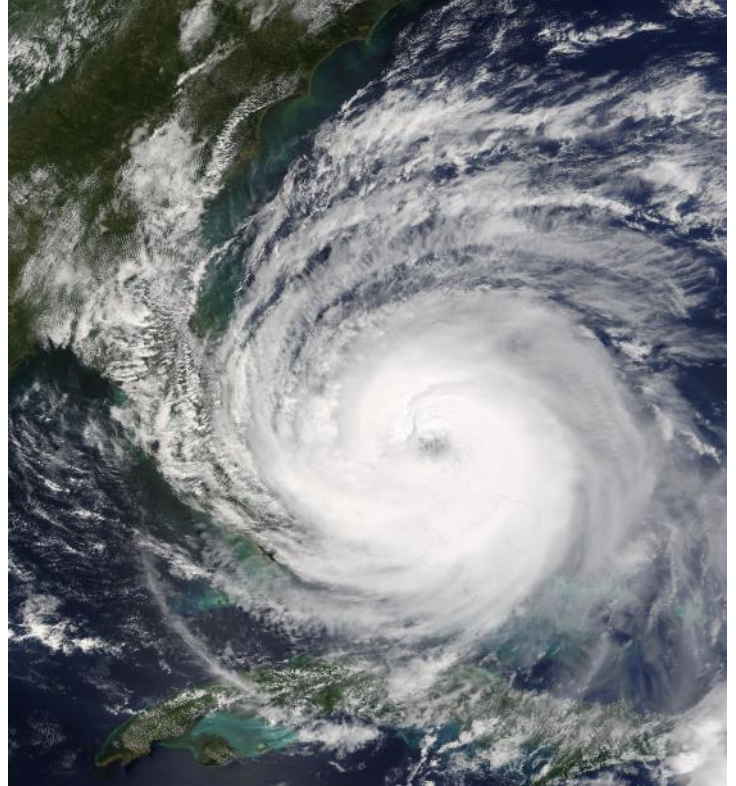


HORTICULTURE HAPPENINGS...

Friends of the Port St. Lucie Botanical Gardens Horticulture Class Series 2016

Pre- and Post-Hurricane • Landscape Preparations

1. Basic safety first: wear real shoes, no flip flops, preferably work boots, work gloves, eye protection. Training in the use of power tools, especially chain saws. Watch for power lines. Watch for sharp debris - metal, glass, etc. Most people get hurt by hurricanes after the hurricane, not during it.
2. Pre-Hurricane: most important issue is plant, especially, tree health. Properly selected and cared for trees survive hurricanes and do not add to the damage being caused. Consider what type of damage your property is subject to when you are selecting plants: wind, salt spray, fresh water flooding, salt water flooding, and damage from windblown debris. Select your trees to survive storm damage.
3. Selection and location: trees that are from hurricane prone areas, i.e. natives, will survive storms better than others. Also trees from areas that traditionally have cyclones. Generally, short trunks, short round or oval canopies, low center of gravity, strong branches and trunk. Natives



especially are well adapted. Plant location can limit health by limiting the size of the root ball. Most uprooted trees have damaged roots or very limited root balls. Do not plant large trees where the branches will over top or rub against your roof.



4. Healthy plants survive better and recover faster than other plants. Generally and always true. Check your plants for general health. Dead limbs, damaged trunks, damaged roots from excavations, paving, etc. Poor pruning leads to "witches broom growth" and often breaking limbs.
5. Palms: Do not 'hurricane prune' palms. In a storm the loose material will fall to the ground quite early and will stay where put. Neither fronds nor fruit (except for coconuts, which should be removed) will become a damage issue

Continued from Pg 17

in a storm. So called "hurricane pruning" leads to pencil pointing with a resulting weak trunk that may break off during a storm.

6. Container plants: my storage policy is to lay them down on the ground in sheltered locations – shrub borders, fenced vegetable areas, etc. I have never lost a plant doing this - Andrew, Frances, Jean.
7. Post- hurricane: remember the safety issue. Also think about heat and how much work you can do comfortably. Pick up the debris. Cut off any seriously wind damaged materials, especially materials that are hanging free. If it looks likely to survive leave it on. Wash off salt. Otherwise do nothing.
8. Downed trees: if you have down trees or shrubs that will take a while to get raised, protect the root ball. Cover the root ball with anything except plastic; cloth, palm fronds, branches, etc. Keep the root ball moist. Keep in mind that you can do as much damage to the roots raising the tree as the wind did taking it down. You only want to raise a tree once. Be prepared with stakes, ties, help, etc. Pick it up, stake and tie it, water well, trim off any obvious dying materials but do not prune until you see new growth which may take a while. Pruning of any plants tends to encourage new growth and should be left till later if the roots have been damaged.
9. What trees to choose: native live oaks, gumbo limbo, native figs, sea grapes, pigeon plum, capers, coconut palms, sabal palms. Drive around the old residential areas and look at the big trees - they survived the storms and hurricanes.



*The content of this lesson plan was provided by a Master Gardener with accents by The Gardens Gate. It should be noted that Master Gardeners have a variety of views and it is up to the individual to determine what information best fits one's own needs.

UF | IFAS Extension

UNIVERSITY of FLORIDA

University of Florida IFAS Extension Central Florida Gardening Calendar — June

What to Plant

Annuals: Annuals that can take full sun during the increasingly hot summer months include celosia, portulaca, vinca, and some coleus. **See Annuals:** http://edis.ifas.ufl.edu/topic_annual_landscape_plants

Palms: Summer's warm, rainy months are the perfect time to plant palms. Make sure not to cover the trunk with soil. **See Palms:** http://edis.ifas.ufl.edu/topic_palms

Herbs: Plant heat-loving herbs, including basil, Mexican tarragon, and rosemary. Pinch back regularly to prevent flowering and enhance branching. **See Herbs:** http://edis.ifas.ufl.edu/topic_herbs

Vegetables: Plant okra, southern pea, calabaza, Malabar spinach, and sweet potato. It is too late to plant tomatoes. **See Vegetable Gardening in Florida:** http://edis.ifas.ufl.edu/topic_vegetable_gardening

What to Do

Pests: Monitor the landscape and garden weekly for harmful insects. Knowing which insects attack a plant can aid in identification and treatment. **See Landscape Pest Management:** http://edis.ifas.ufl.edu/topic_landscape_pests

Irrigation: Watch for drought stress and water as needed if rainfall has been spotty. Focus on new plantings and follow watering restrictions. When rains begin, shut down the irrigation system. **See Landscape Irrigation:** http://edis.ifas.ufl.edu/topic_landscape_irrigation

Propagation: Produce more plants by air layering, grafting, division, or cuttings. **See Seeds and Propagation (Land and Garden):** http://edis.ifas.ufl.edu/topic_garden_propagation

Palms and cycads: Watch for nutrient deficiencies or other problems and use an appropriate treatment. Keep lawn fertilizers away from the root zone. **See Palm Care:** http://edis.ifas.ufl.edu/topic_palm_care

Pruning: Lightly prune summer-flowering shrubs, like hibiscus, oleander, and crapemyrtle, during the warmer months because they bloom on new growth. Azaleas can still be pruned until the middle of next month without harming next spring's buds. **See Pruning Landscape Trees and Shrubs:** http://edis.ifas.ufl.edu/topic_tree_pruning

Lawns: Summer rains usually begin this month as do lawn fertilizer restrictions in some areas of the state. Check with your municipality to see if this applies to your area. **See Lawn Fertilizer:** http://edis.ifas.ufl.edu/topic_lawn_fertilization

Soil solarization: Clean up your vegetable garden and solarize the soil to kill pests and disease. **See Soil Solarization:** http://edis.ifas.ufl.edu/topic_soil_solarization

HELPFUL HINTS (TIPS) FROM HORTENSE...



Bounce This Along

U.S. Postal service sent out a message to all letter carriers to put a sheet of Bounce in their uniform pockets to keep yellow-jackets away.

Use them all the time when playing baseball and soccer. I use it when I am working outside. It really works. The insects just veer around you.

All this time you've just been putting Bounce in the dryer!

1. It will chase ants away when you lay a sheet near them. It also repels mice.
2. Spread sheets around foundation areas, or in trailers, or cars that are sitting and it keeps mice from entering your vehicle.
3. It takes the odour out of books and photo albums that don't get opened too often.
4. It repels mosquitoes. Tie a sheet of Bounce through a belt loop when outdoors during mosquito season.
5. Eliminate static electricity from your television (or computer) screen.
6. Since Bounce is designed to help eliminate static cling, wipe your television screen with a used sheet of Bounce to keep dust from resettling.



More Next Month... HORTense takes no responsibility for her claims. And furthermore, she is penniless so don't try suing her...

JUNE PLANT SALE

Hurry down to the PSLBG Propagation area and you'll find lots of specials on plants to purchase. Several varieties of the Copper Leaf Plant available at great prices.

\$6. for any one-gallon pot of Copper Leaf 2/\$10.

\$4. For any one-quart pot of Copper Leaf 2/\$7.



More Specials!

Trees – Several Varieties - 2 gallon pots - \$20.00

All Plants - 1 gallon pots - \$7.00 & 1 quart pots - \$3.00

(unless otherwise marked)

FREE ADMISSION

10th Annual
HURRICANE

2016
PREPAREDNESS
EXPO

CITY OF PORT ST. LUCIE

Hurricane preparedness vendors
Government and non-profit organizations
Raffles and giveaways for attending

Saturday, June 4, 10 a.m. to 2 p.m.

Port St. Lucie Civic Center

9221 SE Civic Center Place

For more info: (772) 871-7340 or www.cityofpsl.com



Port St. Lucie

Civic Center

Where the Research Coast Meets



WASTE PRO

Caring For Our Communities

JAZZ JAMS

AT THE GARDENS



Presented By



Wednesday
June 1st, 15th & 29th
6:30 - 9:30 pm

Nature's Nighttime Critters

Learn about Owls and Bats, nature's nighttime critters and how they hunt and survive at night.

11 am - Noon

Saturday June 25, 2016



Port St. Lucie
Botanical Gardens
Florida

Free for Children Ages 5 - 12 & families
Registration Required - Please Call 772.337.1959
Sponsored/organized by the Friends of the Port St. Lucie Botanical Gardens



👍 "like" us on
facebook

**VISIT OUR
WEBSITE**



SATURDAY
JULY 2, 2016
9:00 a.m. - 1:00 p.m.

'TASTE OF THE TROPICS'
Plant Sale

*Rare Tropical Fruit
& Fruit Wine Tasting*

In cooperation with the
TREASURE COAST RARE FRUIT CLUB

- Free admission to the Botanical Gardens •
- Explore the wonderful world of tropical fruits available on the Treasure Coast •
- Annuals, perennials and Florida-friendly plants •
- Fruit trees and shrubs • Native plants •
- Orchids and exotics • Bamboo •
- Garden related crafts •

Find what you need to make your Garden grow.
Talk with the experts and tour the Gardens.
• Free parking •



2410 SE Westmoreland Blvd, Port St Lucie - 772.337.1959
Donations to the Friends of the PSL Botanical Gardens are always gratefully appreciated

Horticulture How-To Series:

How to Graft Fruit Trees

Port St. Lucie Botanical Gardens

Friends of the Port St Lucie Botanical Gardens Horticulture Committee present our continuing '**How -To**' series of hands-on workshops
This Propagation Event will be held in the Gardens Propagation Area

Saturday, July 2, 2016
from 9:30 - 11:00 am

What You'll Learn:

Grafting Procedures
Cleft Grafting Techniques
Side Veneer Grafting Techniques
Selecting Scion Wood
Attaching the Scion to the Rootstock

(This workshop will be held in conjunction with the Taste of the Tropics Plant Sale)

Cost: PSLBG Members - **NO CHARGE** • Non-Members - **\$10**

Become an individual FPSLBG member for \$25 and you can attend the event **FREE!!**

Presenter **Mike Luciano** has vast experience and knowledge in the field of Grafting and will demonstrate step by step how you can graft your own fruit trees. Mike is a long time resident of Martin County since 1972, Past President of the Treasure Coast Rare Fruit Club and the owner of Trees N More Farm & Nursery located in Palm City. Trees N More specializes in cold hardy tropical fruit trees. They also make homemade fruit jams, ice cream and wine made from their fruits.

Don't miss the "Wine Tasting" presented by Trees N More and the "tropical fruit tasting" presented by the Treasure Cost Rare Fruit Club. This Taste of the Tropics Plant Sale is a fun event held at the Port St. Lucie Botanical Gardens in junction with the workshop on Saturday, July 2, 2016.

Horticulture How-To Series:

UPCOMING PROGRAMS

Port St. Lucie Botanical Gardens

Held in the Propagation Area

Saturday, July 2, 2016 – 9:30AM – 11:00AM

How to Graft Fruit Trees – Mike Luciano, Trees N MORE specializes in fruit trees. Mike is an expert in air layering and grafting. He will demonstrate Grafting Procedures, Cleft and Side Veneer Grafting Techniques, selecting Scion Wood and attaching Scion to the Rootstock. Don't miss the workshop, plant sale and the Taste of the Tropics fruit and wine tasting. (*Taste of the Tropics Plant Sale*)

Saturday, July 30, 2016 – 10:00AM – 11:30AM

This exciting workshop will include two Bromeliad experts – **Carolyn Luxion**, designer, artist, Master Gardener and President of the PGA Village Garden Society will demonstrate Using Bromeliads and Tillandsias in your landscape and home. **Pat Sumiak**, Bromeliad specialist and President of the Treasure Coast Bromeliad Society will demonstrate the Basics of caring for your Bromeliads. (*Bromeliads and More Plant Sale*)

Saturday, August 27, 2016 10:00AM – 11:30AM

Hands on Demonstration on Orchid Care – TBD
(*Orchids, Orchids and More Plant Sale*)

Saturday, September 24, 2016 10:00AM – 11:30AM

Growing Vegetables in your Garden – 10:00AM-11:30AM – TBD
(*Vegetables, Herbs & More Plant Sale*)

S U P P O R T E R S

Royal Green

LANDSCAPE & PEST MGMT INC.

831 N.E. Dixie Hwy Jensen Beach Florida 34957

- * Rugose Spiraling White Fly Control
- * Interior Pest Control
- * Lawn, Tree & Shrub Fertilization
- * Disease Control
- * Insect & Weed Control
- * Fungus Control
- * Guaranteed Results
- * Locally Owned and Operated Since 1996
- * Preventative Grub Control
- * Citrus & Palm Care
- * Commercial and Residential

* Licensed & Insured BMP State Certified Technicians

EXPERT LAWN, TREE & SHRUB SPRAYING
(772) 334-1144

Free Inspection & Estimates
No Fine Print!!

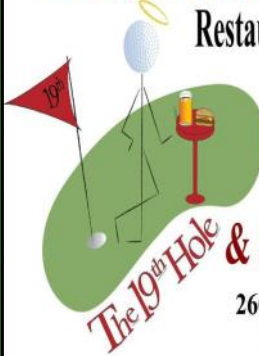
NEW CUSTOMER OFFER
\$30 CREDIT
To Redeem Mention This AD

Visit our new website:
www.RoyalGreenLandscapeandPest.com



The 19th Hole at the Saints

Restaurant & Banquet Hall



772-337-0180

Carl Bussett/Rick Aslin
Proprietors

& Sandpiper Room

2601 SE Morningside Blvd.
Port St. Lucie, FL 34952



Mark A. Barnes

Making You & Your business Look Great

772.801.8800

Mark@MarkBarnesMusic.com

- Business Card Designs
- Logo Designs
- Graphic Designs
- Specialty Cards
- Real Estate Ads & Designs
- Video Home Tours
- Basic Web Sites
- Copyright Services
- ASCAP & Music Site Setup
- QR Code Design
- Video Bios and Resumes
- Power Point Presentations
- Virtual Assistant
- Real Estate Services

RECREATION: (772) 807-4499 HOSPITALITY: (772) 807-4488

HUMANA FITNESS & WELLNESS CENTER: (772) 204-7101

Weekly Outdoor Market • Banquet Facilities
Membership Specials • Special Events



Port St. Lucie

Civic Center

Where the Research Coast Meets

9221 S.E. CIVIC CENTER PL
PORT ST. LUCIE, FL 34952

Say I Do - Wedding Ceremonies

www.maureendavisweddingofficiantllc.com

Maureen Davis * Wedding Officiant
Port Saint Lucie, Florida

772-323-0945 (c) 772-985-7946



Beach Weddings a Specialty

Maureen Ahern Davis
ipronounceu@gmail.com



Southern Branch, Inc.

Certified Arborist & Tree Care

Jamey Liddell

UT4358-A

239.229.7657

JAMEYLIDDELL@GMAIL.COM

Fully Licensed and insured



PORT ST. LUCIE
PARKS & RECREATION



THE SAINTS

At Port St. Lucie Golf Course

www.CityofPSL.com/Golf

2601 SE Morningside Blvd. • (772) 398-2901
Port St. Lucie, FL 34952 • Fax: (772) 398-2778



BETH GRADY
REALTOR®



SWEET LIFE
REALTY GROUP

718 SW PORT ST LUCIE BLVD #4
PORT ST LUCIE, FL 34953

DIRECT
772.361.1447

E-MAIL

BETH@SWEETLIFEREALTY.COM

"Home values have increased, call me today for a free market evaluation."



The service you deserve, the lifestyle you desire...

EXPERIENCE COUNTS - AND SAVINGS ADD UP

Find out about the **Competitive Rates** and **Special Benefits** available through the AARP® Auto Insurance Program from The Hartford.

Ready to learn more? Contact our agency now:

POST INSURANCE



SEE HOW MUCH YOU COULD SAVE!
Call today for your FREE, no-obligation quote:

772-878-8184

POST INSURANCE
146 NW Central Park Plaza, Suite 102
Port St. Lucie, FL, 34986

info@insurewithpost.com
www.InsureWithPost.com



Welcome to All Garden Goers...

This month our Jazz Jams will be held on
June 1st, June 15th
& June 29th
starting at 6:30 pm

JAZZ JAMS

At The Gardens

Donation \$5 per person.
Gardens & Jazz Society
Members \$4 per person.

Sponsored by the
Fort Pierce Jazz & Blues Society

Advertise With Us

Contact Mark Barnes
at **772.801.8800** or e-mail
NEWS@PSLBOTANICALGARDENS.ORG