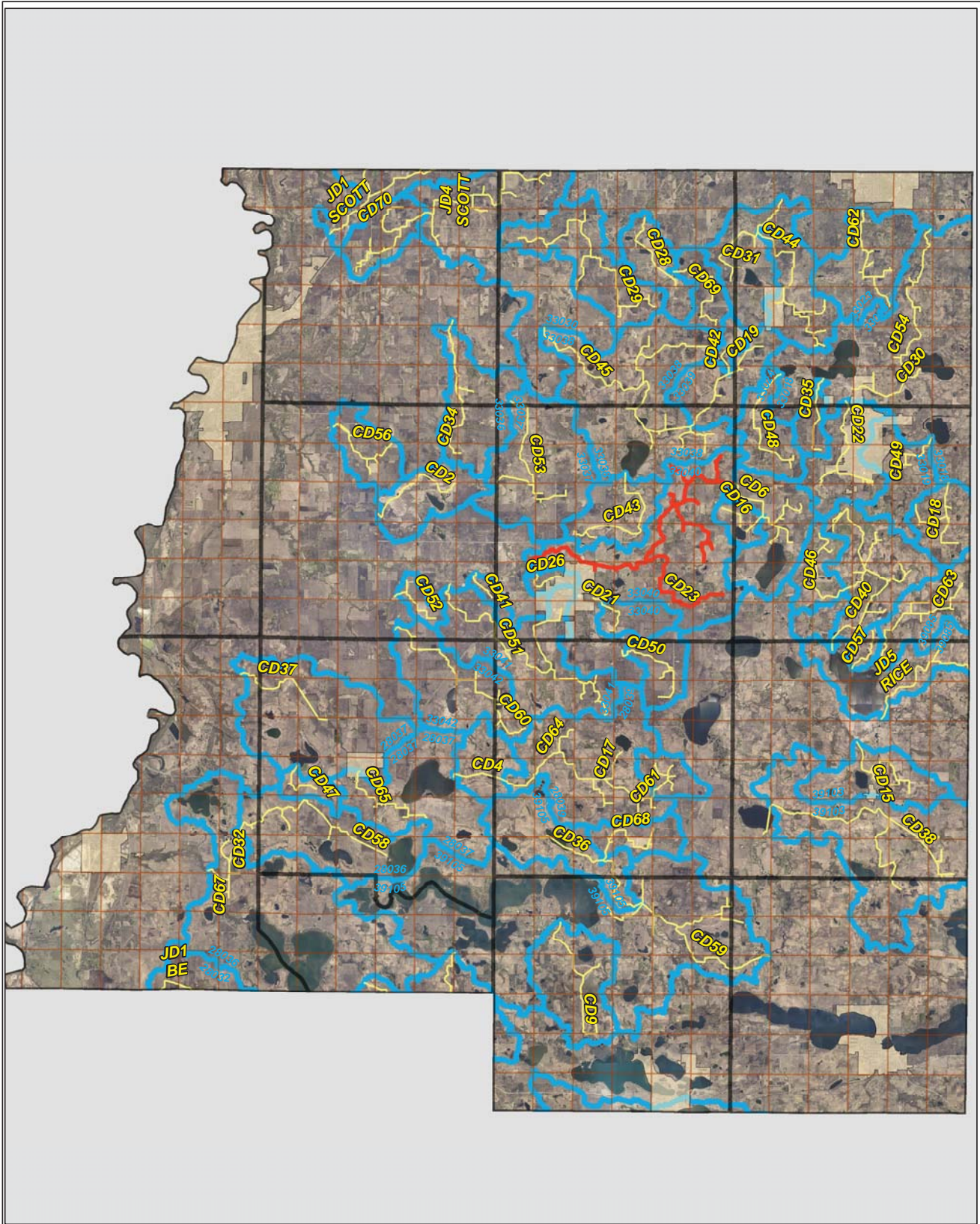




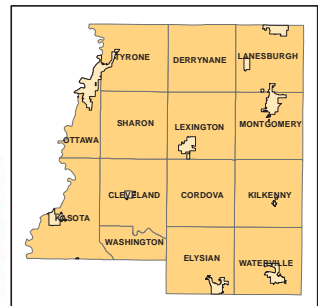
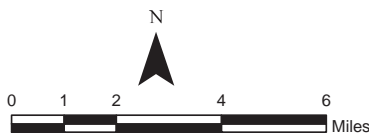


CD 23

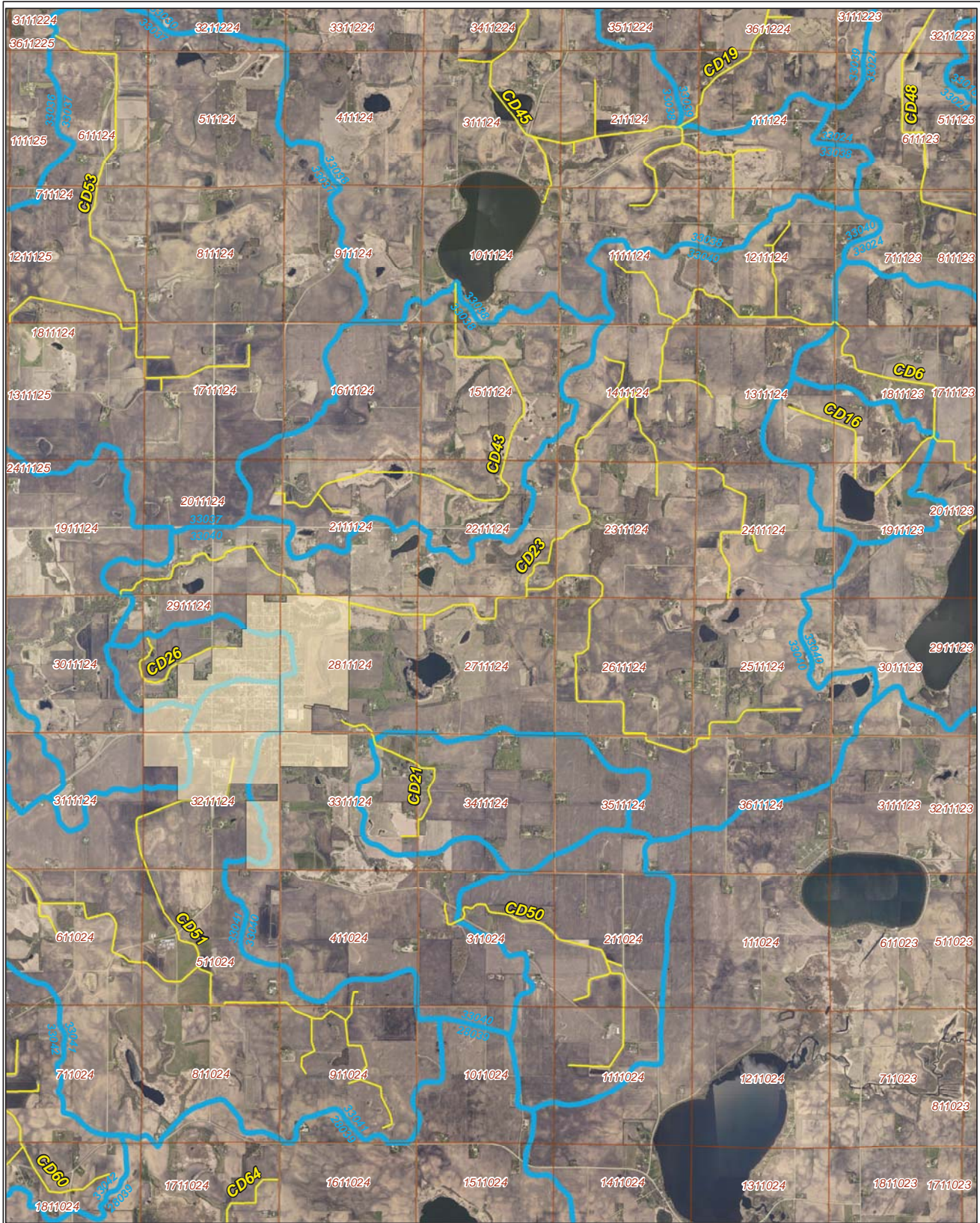


Legend

-  Sections
-  Cities
- Ditches**
-  Ditch
-  Ditch Watershed
-  Ditch Watershed



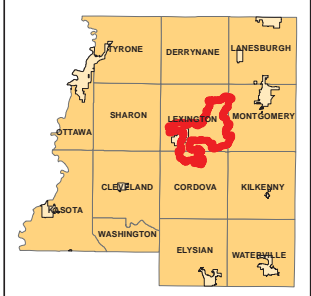
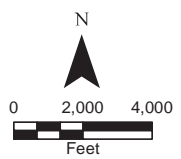
Ditch Watershed



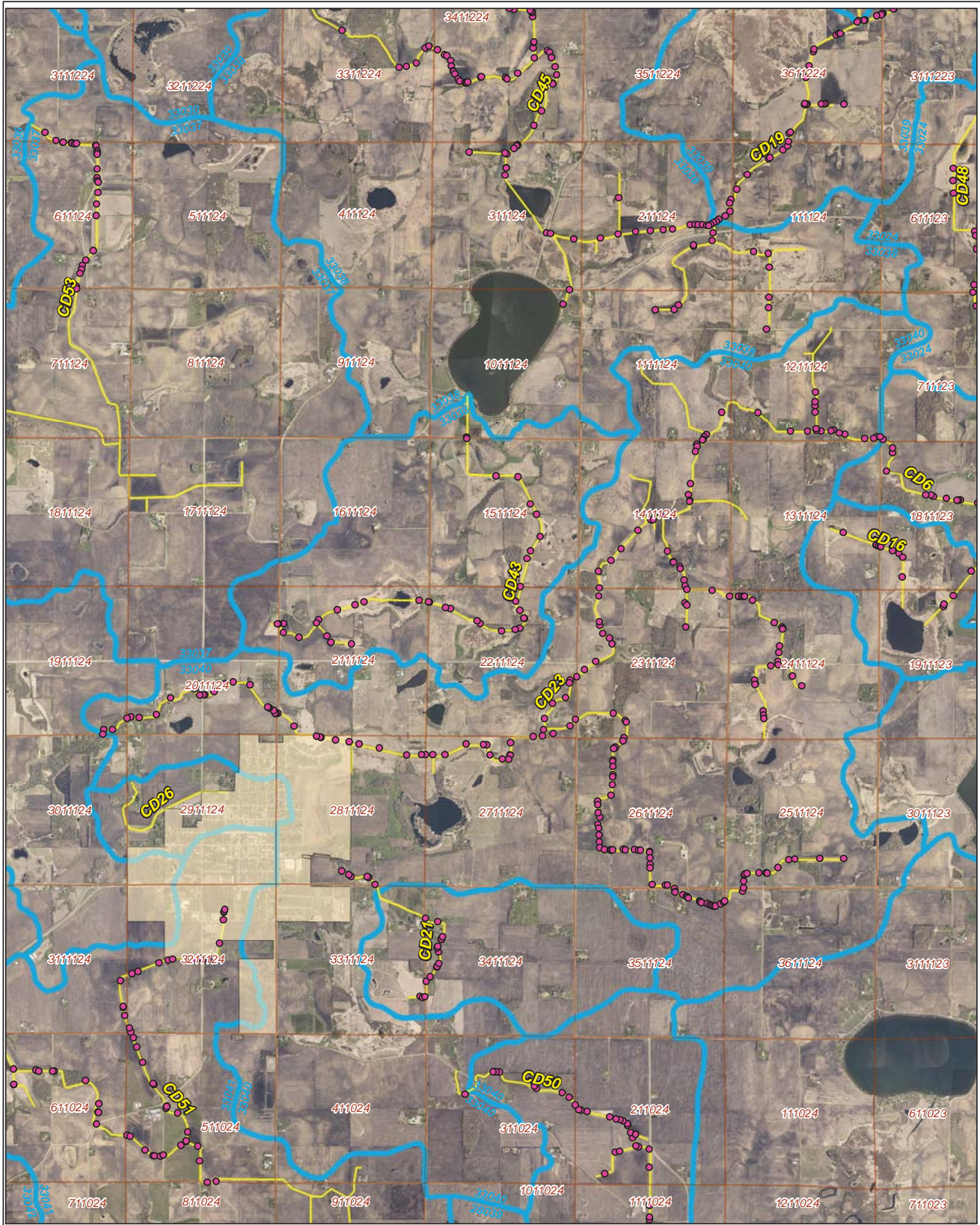
Legend

- Sections
- Cities
- Ditches
- Ditch Watershed

Ditch ID: 33040CD23
Acres: 9088.07



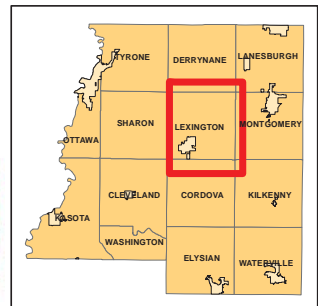
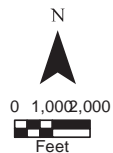
2006 Ditch Inventory



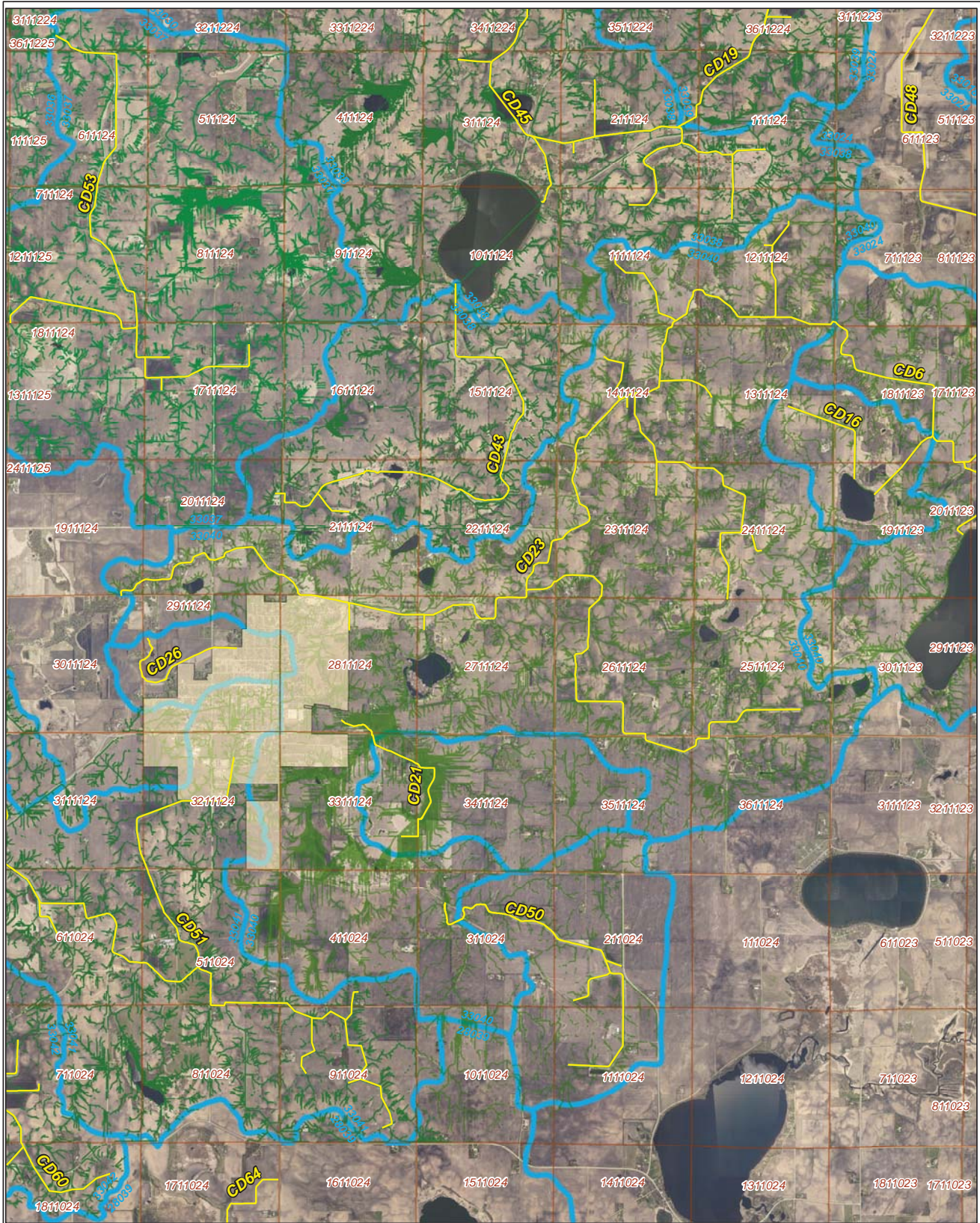
Legend

- Ditch Inventory
- Sections
- Cities
- Ditches
- Ditch Watershed






Ditch Name: CD23



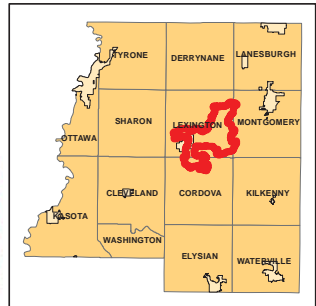
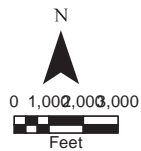
High Priority - Stream Power Index Sites



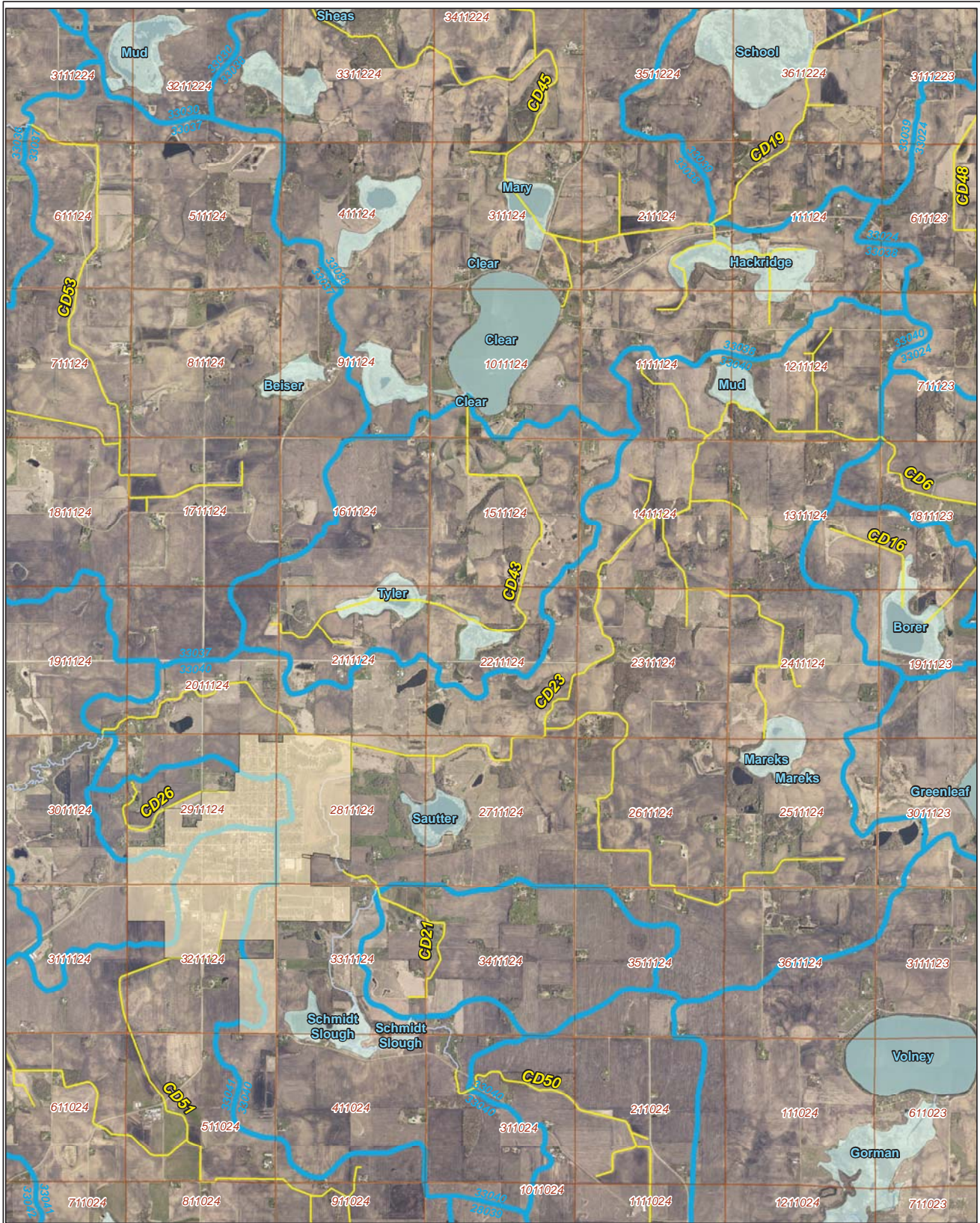
Legend

-  Sediment
-  Ditches
-  Sections
-  Cities
-  Ditch Watershed

Ditch Name: CD23

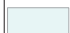







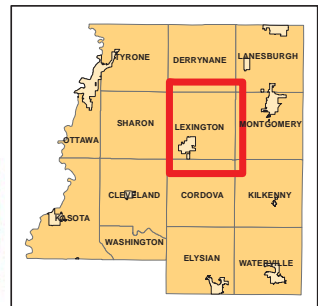
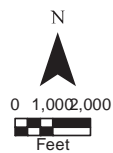
DNR Public Waters



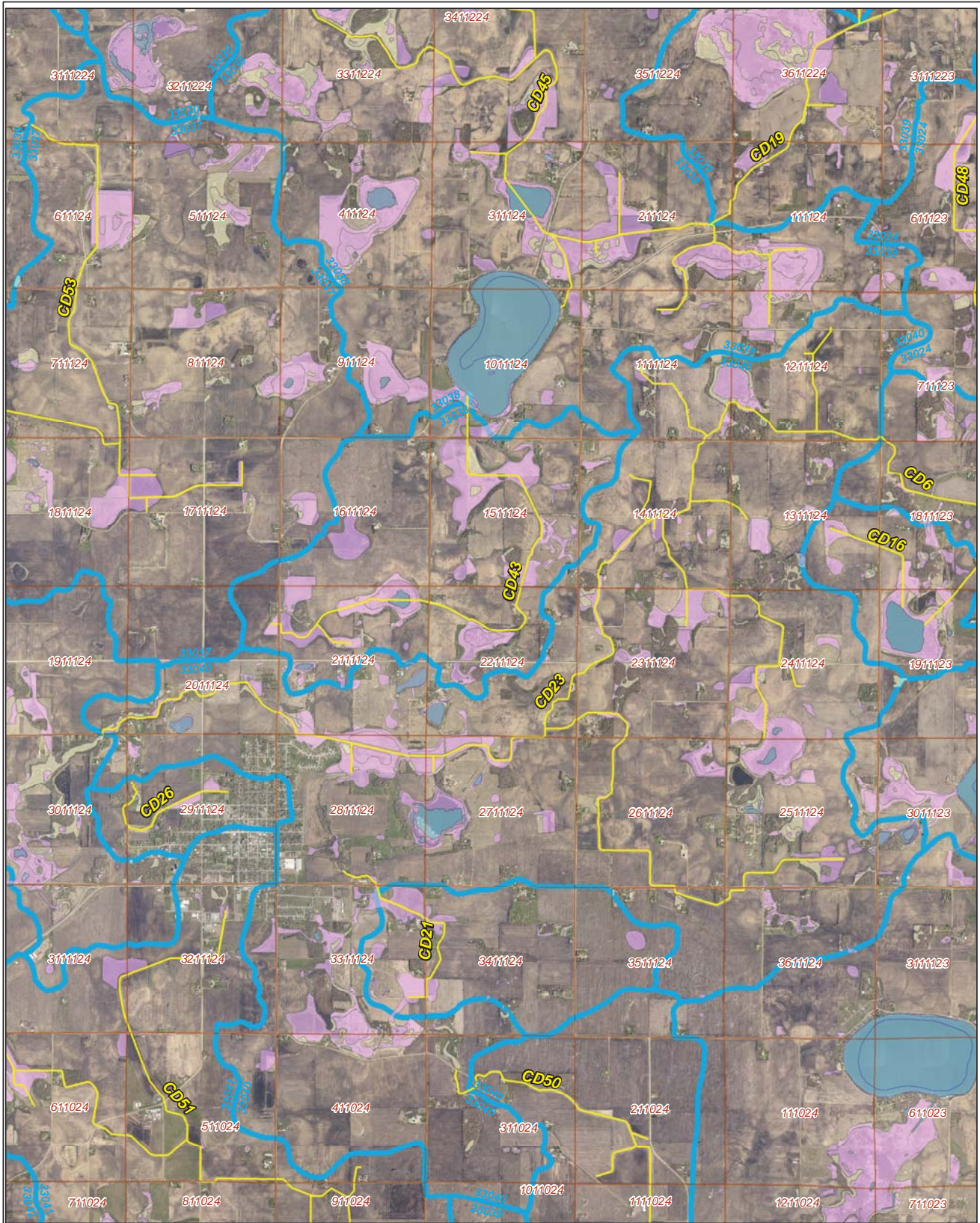
Ditch Name: CD23

Legend

-  DNR Public Lakes and Basins
-  DNR Rivers and Streams
-  Sections
-  Cities
-  Ditches
-  Ditch Watershed



2015 Wetland Inventory



Ditch Name: CD23

Legend

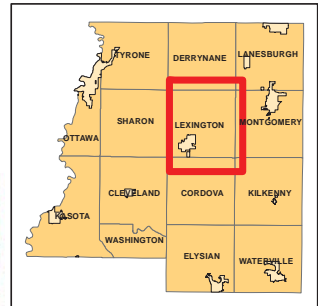
Wetland Type

- Freshwater Emergent Wetland
- Freshwater Forested/Shrub Wetland
- Freshwater Pond
- Lake
- Riverine

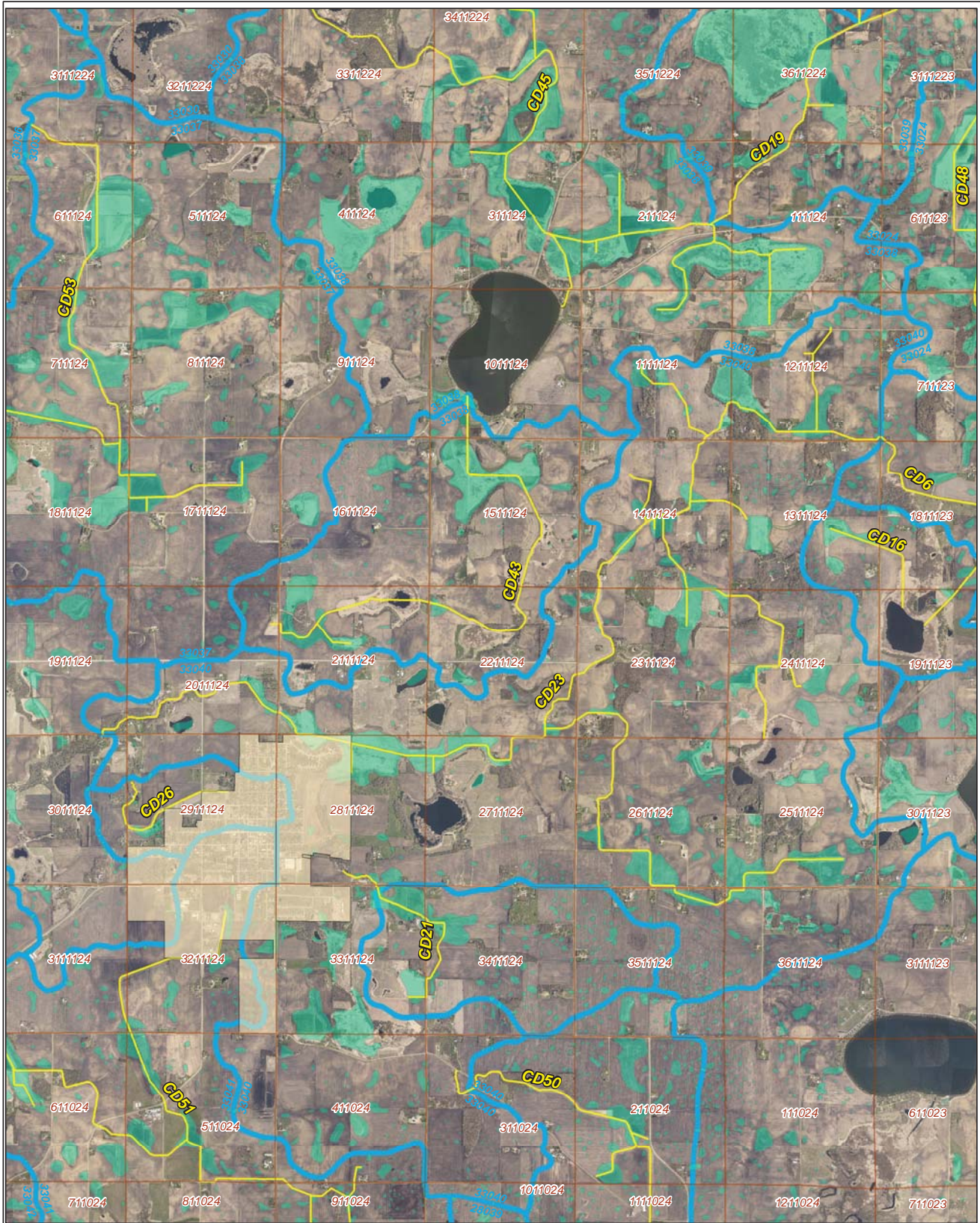
Sections

Ditches

Ditch Watershed



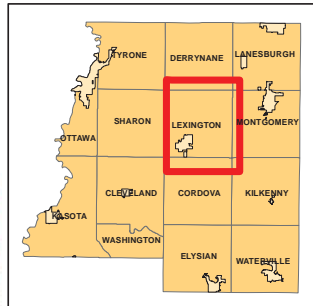
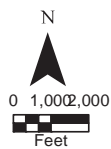
Restorable Wetlands



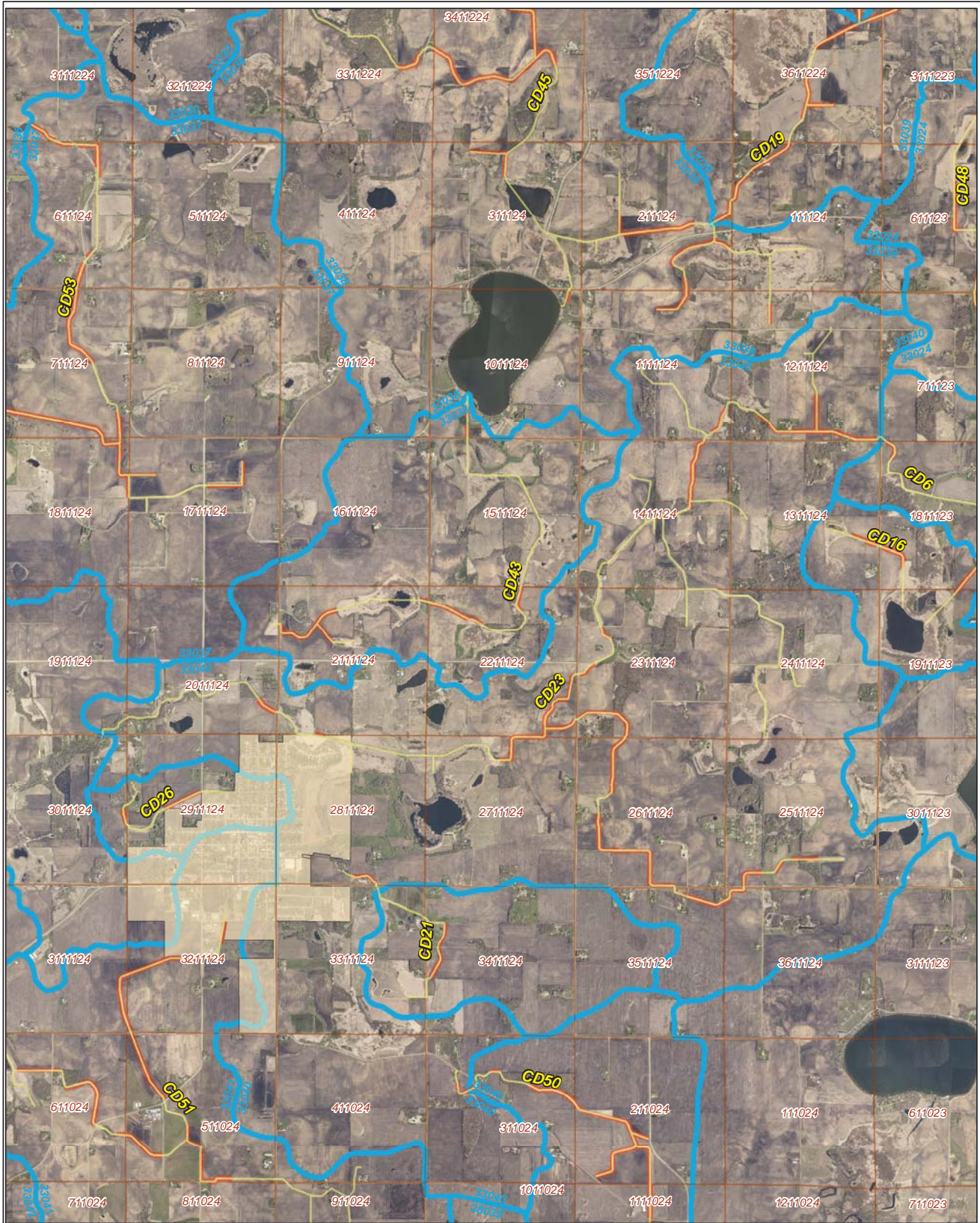
Ditch Name: CD23

Legend






- Retention Locations
- Sections
- Cities
- Ditches
- Ditch Watershed



Ditch Buffer



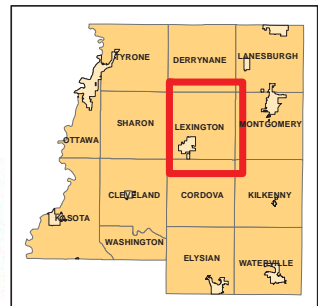
Legend

-  Ditches
-  Needs Buffer
-  Sections
-  Cities
-  Ditch Watershed

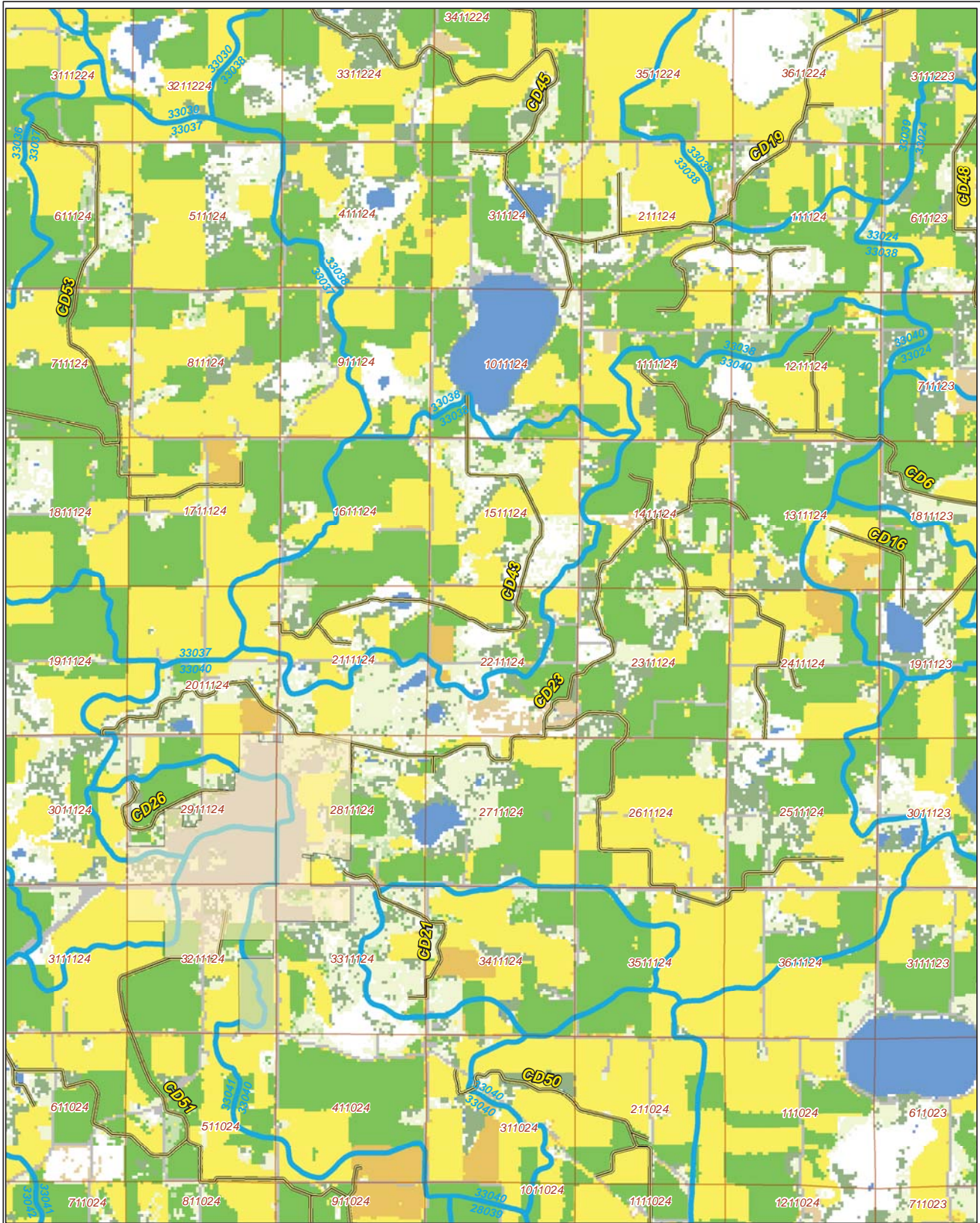
Ditch Name: CD23
Percent Buffered: 72.97%



0 1,000 2,000
Feet



2015 Crop Coverage



Ditch Name: CD23

Legend	
Coverage Type	
Open Water	Sections
Alfalfa	Other Hay/Non Alfalfa
Corn	Peas
Forest	Soybeans
Developed Area	Spring Wheat
Grass/Pasture	Sweet Corn
	Ditches
	Ditch Watershed

