



## FALL SAFETY CONSIDERATIONS FOR ROADS, EQUIPMENT & PERSONAL WELL BEING



### Make It Safe, Make It Visible

As a farmer, you often travel long distances between fields, requiring travel on public roads throughout Alberta. Oversized and slow farm equipment, mixed with traditional highway traffic, can result in collisions and other accidents.

Member safety is important and West Wetaskiwin REA wants to remind farmers to be safe this harvest season. For more information on safety measures and precautions, visit: [www.agric.gov.ab.ca](http://www.agric.gov.ab.ca) to view a copy of the revamped *Safe Transportation of Farm Equipment in Alberta* book or the *Harvest Safety Tips* section.



You can prevent farm equipment incidents on public roads by focusing on three main areas.

- **Make your equipment safe and visible:** follow regulated requirements for lighting and signage including a clean slow moving vehicle (SMV) sign as appropriate. Complete a safety check of any vehicles that will be travelling on public highways (hitch pins, tires, etc.)
- **Follow safe driving tips:** travel at a speed that will ensure you can maintain vehicle control, observe road precautions, avoid busy roads / travel times if possible, always stop and make sure the way is clear, and ensure all drivers have a valid driver's license.
- **Drive defensively:** stay alert for hazards and if traffic is lined up behind you be sure the shoulder width is sufficient and solid enough to support your equipment before you move over.

For power troubles or service requests, contact: FortisAlberta (the distribution system operator for West Wetaskiwin REA): Toll-free: 1-855-333-9473 or 780-310-9473

For REA inquiries contact:  
West Wetaskiwin REA  
R.R. #1 Station Main,  
Wetaskiwin, Alberta T9A 1W8  
Phone: 780-335-9378 (WEST)  
E-mail: [westwet@telus.net](mailto:westwet@telus.net)  
[www.westwetaskiwinrea.com](http://www.westwetaskiwinrea.com)

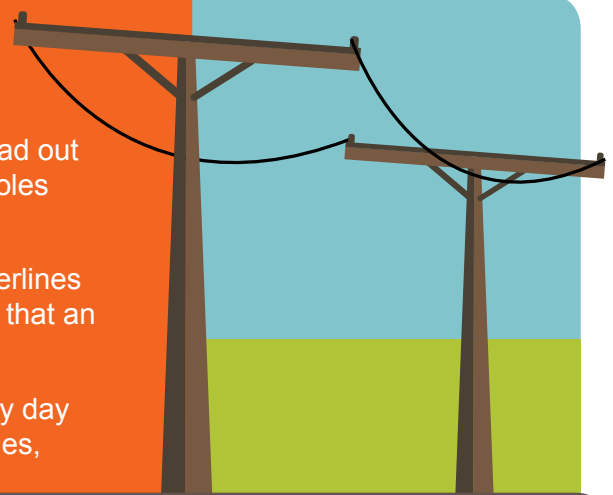
For billing or account inquiries contact:  
Battle River Power Coop  
Box 1420  
Camrose, Alberta T4V 1X3  
Toll-free: 1-877-428-3972  
E-mail: [brpc@brpower.coop](mailto:brpc@brpower.coop)  
[www.brpower.coop](http://www.brpower.coop)

# Look Up And Around This Harvest Season

West Wetaskiwin REA would like to remind all farmers as you head out for harvest to **look up and around** to identify where the power poles and powerlines are located.

Farm equipment has increased in size over the years, while powerlines remain a constant height. This translates to a change in distance that an operator must allow between machines and electrical structures.

We encourage members to check your surroundings all day/every day and be certain that you can safely navigate around the power poles, power lines and guy wires.



If you have any doubts or questions about clearance, call FortisAlberta at 780-310-9473.

## Recognize Fatigue

Did you know that fatigue is a major factor in causing farm-related injuries? Many farmers push themselves, especially during the really busy times such as fall harvest.

Fatigue can creep up on a person and it is important to recognize common symptoms including: feeling sleepy or tired, headaches and dizziness, poor concentration, slow reflexes, feeling irritable, and aching muscles.

Although the human factor is a significant cause of farm-related hazards, your safety is about the choices you make. It takes just a moment to make a decision that could literally be the difference between life and death.



It's important for farmers to recognize things they can do to ward off fatigue such as:

- get adequate sleep,
- eat nourishing food,
- stay hydrated,
- dress for comfort, and safety,
- plan for the physical and mental demands of the fall harvest, and
- realize when you have had enough and turn the operation over to someone else or simply take a break.

Regulated  
Rate  
Option



The Regulated Rate Option (RRO) may increase or decrease from month to month as it is priced on the open market and subject to many factors relating to supply and demand. It is not a 'regulated' rate, rather is a default rate. If you do not have a contract with an electricity retailer, then you are on the RRO. For August, 2018 RRO is priced at \$0.06800 per kWh, reflected on your enclosed orange bill. For September, 2018 the RRO is priced at \$0.06800 per kWh.

**It is very important to note that your electrical distribution system provider will always be the West Wetaskiwin REA, regardless of who supplies your electricity. Members will not be disadvantaged in any way based on their retailer choice.**

**For a list of energy retailers, contact the Utilities Consumer Advocate: 310-4-UCA (310-4822) or [www.ucahelps.alberta.ca](http://www.ucahelps.alberta.ca). If you do not have a contract with an electricity retailer, then you are on the default Regulated Rate Option (RRO). The RRO rate is listed on [www.westwetaskiwinrea.com](http://www.westwetaskiwinrea.com)**

**Information on West Wetaskiwin's Code of Conduct Regulation Compliance Plan can be found on our website: [www.westwetaskiwinrea.com](http://www.westwetaskiwinrea.com)**