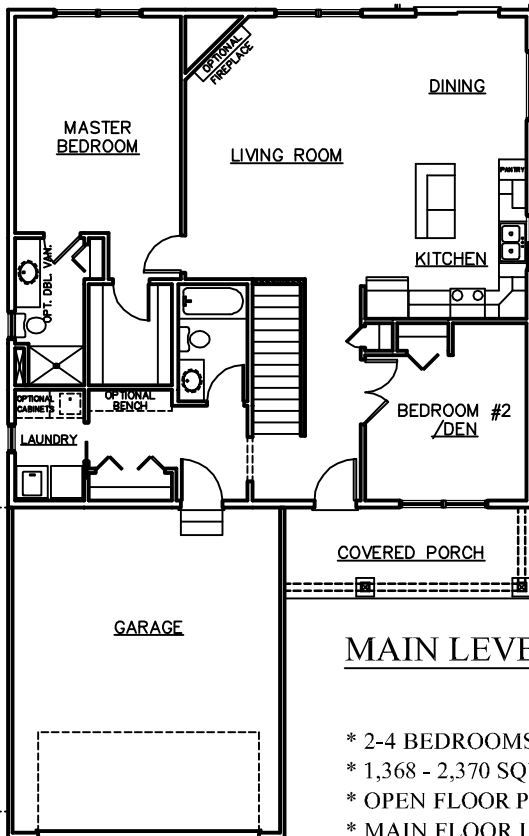


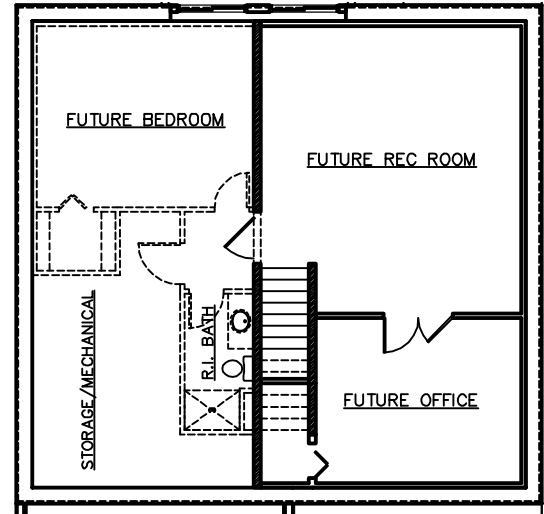


SOME OPTIONS MAY BE SHOWN



MAIN LEVEL

- \* 2-4 BEDROOMS, 2-3 BATHROOMS
- \* 1,368 - 2,370 SQUARE FEET
- \* OPEN FLOOR PLAN
- \* MAIN FLOOR LAUNDRY
- \* WALK-IN-CLOSETS
- \* COVERED FRONT PORCH



LOWER LEVEL

ROOM SIZES

KITCHEN	12' X 11'
DINING	10' X 11'
LIVING ROOM	14'-8" X 19'
MASTER BEDROOM	12' X 16'
BEDROOM #2/DEN	11'-8" X 12'-10"
FUTURE REC ROOM	19' X 20'-9"
FUTURE BEDROOM #3	15'-8" X 13'
FUTURE OFFICE	15' X 12'



3475 Vermillion Street, Suite 101 ~ Hastings, MN 55033 ~ 651.437.3700 ~ [www.gregjhomes.com](http://www.gregjhomes.com)

Plans and specifications are subject to change without notice. Copyright Greg J Homes of Hastings Inc. 2019